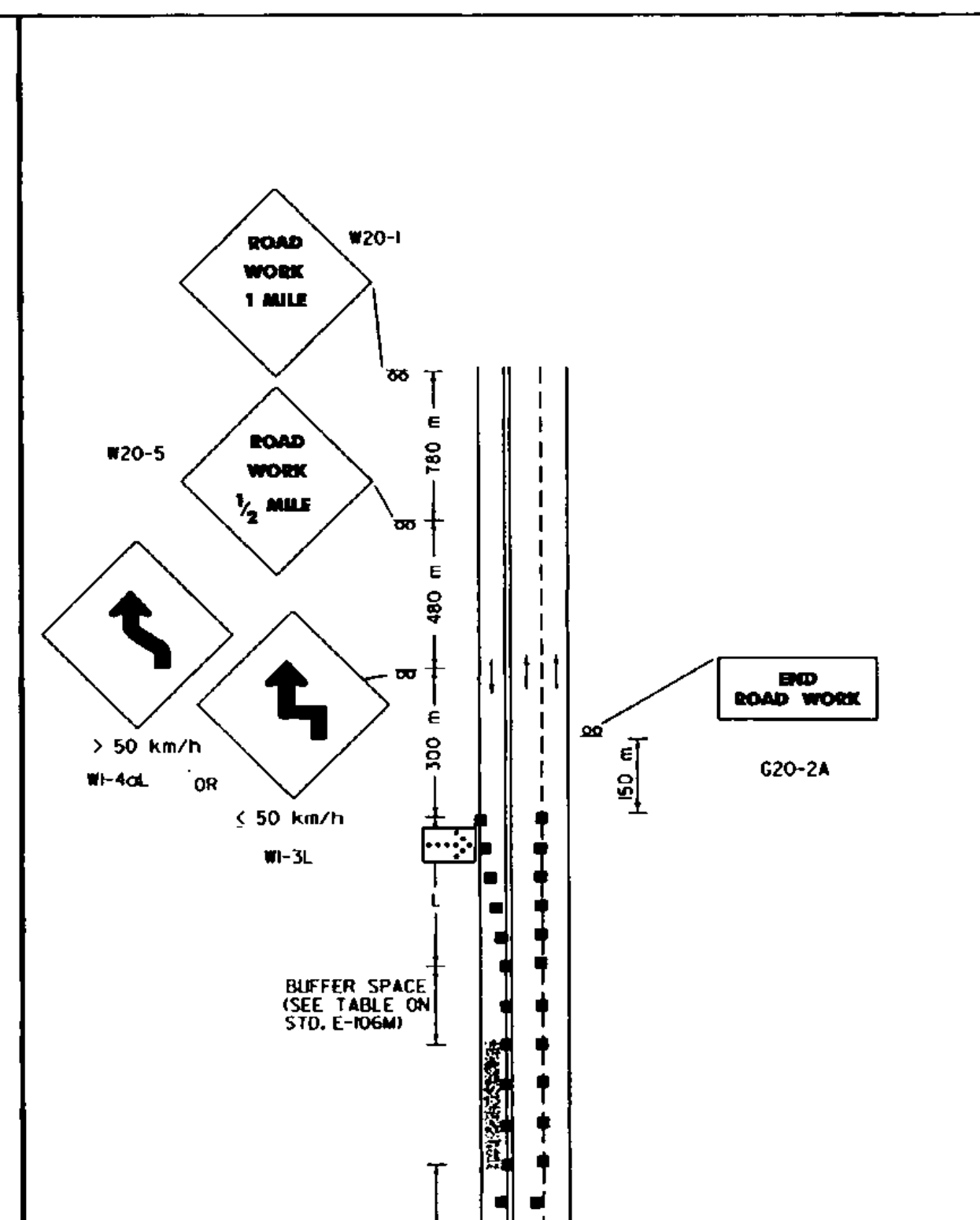
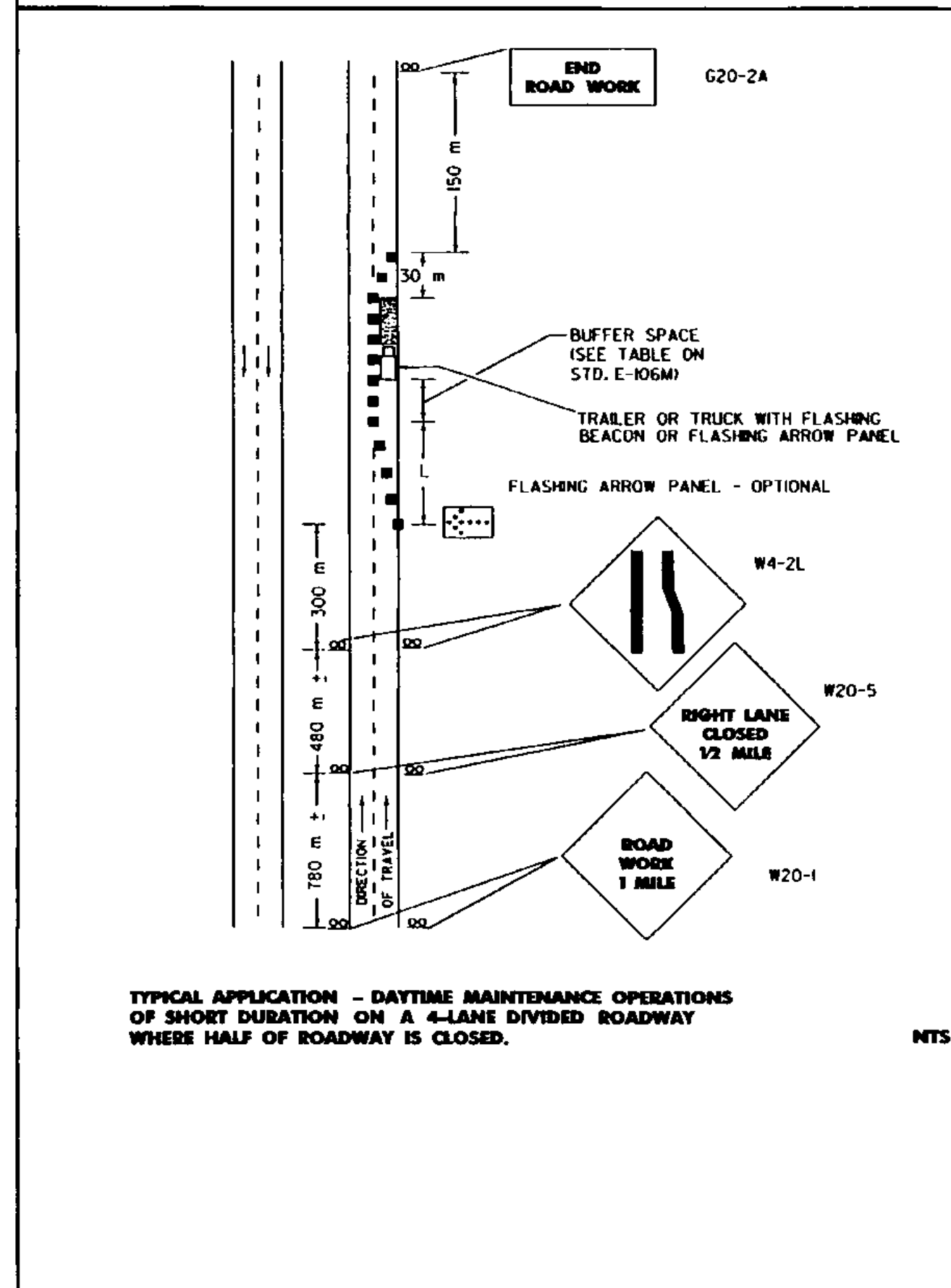


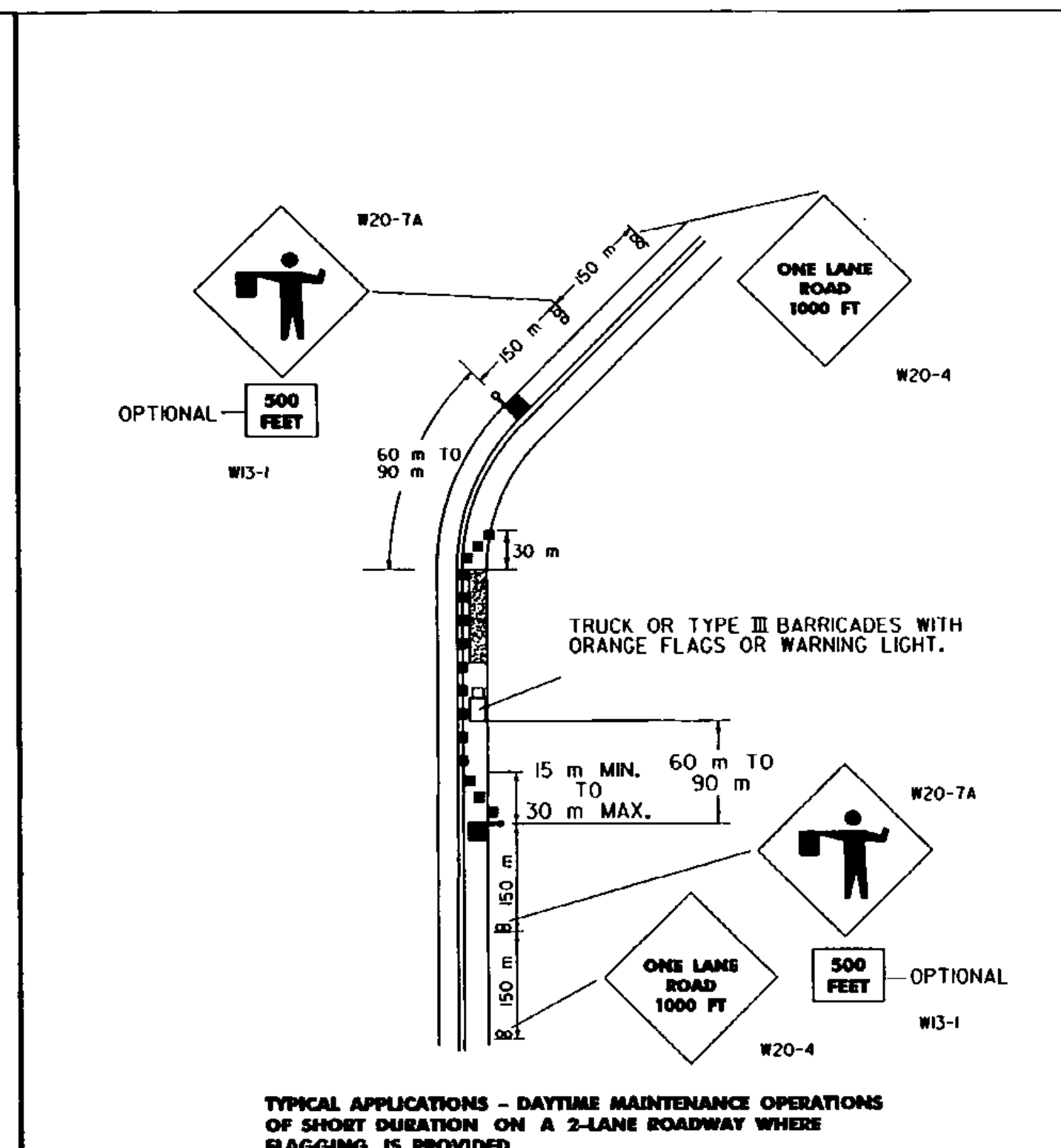
TYPICAL APPLICATION - DAYTIME MAINTENANCE OPERATIONS OF SHORT DURATION ON A 4-LANE DIVIDED ROADWAY WHERE HALF OF ROADWAY IS CLOSED.



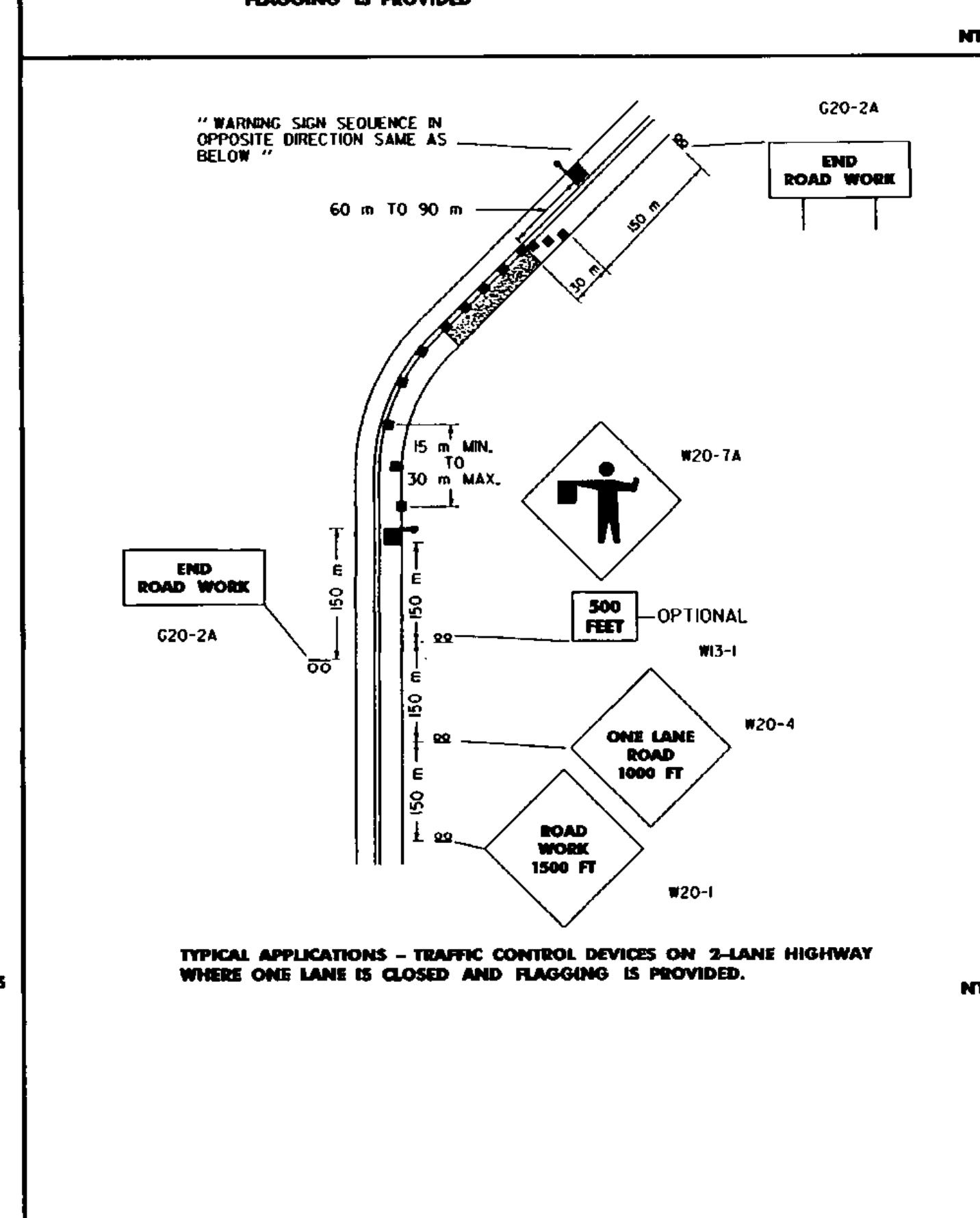
TYPICAL APPLICATION - DAYTIME MAINTENANCE OPERATIONS OF SHORT DURATION ON A 3-LANE ROADWAY WHERE CENTER LANE IS USED FOR OPPOSING TRAFFIC



TYPICAL APPLICATIONS - TRAFFIC CONTROL DEVICES ON 2-LANE HIGHWAY WHERE ONE LANE IS CLOSED AND FLAGGING IS PROVIDED.



TYPICAL APPLICATIONS - DAYTIME MAINTENANCE OPERATIONS OF SHORT DURATION ON A 2-LANE ROADWAY WHERE FLAGGING IS PROVIDED



TYPICAL APPLICATIONS - TRAFFIC CONTROL DEVICES ON 2-LANE HIGHWAY WHERE ONE LANE IS CLOSED AND FLAGGING IS PROVIDED.

REFLECTORIZATIONS
ALL SIGNS USED DURING THE HOURS OF DARKNESS SHALL BE REFLECTORIZED (TYPE II OR III). CONES USED FOR TRAFFIC CONTROL AT NIGHT SHALL COMPLY WITH STANDARD E-106M.

COLORS
THE WARNING SIGNS SHOWN ON THIS SHEET SHALL HAVE BLACK TEXT, BORDER, AND SYMBOLS ON AN ORANGE BACKGROUND. THE TEXT AND BORDERS MAY BE SCREENED, LETTERING FILM, OR HAND PAINTED. THE ORANGE SHALL CONFORM WITH THE STANDARD COLORS ADOPTED BY AASHTO AND APPROVED BY FHWA.

TEXT DESIGN
LETTERS, DIGITS, ARROWS, SPACING AND TEXT DIMENSIONS SHALL CONFORM WITH THE FHWA'S "STANDARD ALPHABETS FOR HIGHWAY SIGNS" AS REFERENCED IN THE MUTCD.

SPECIFICATIONS
WARNING SIGNS SHALL MEET THE VAOT STANDARD SPECIFICATIONS FOR CONSTRUCTION.

SIGN BASE MATERIAL
THE SIGN BASE MATERIAL USED FOR THE WARNING SIGNS ON THIS SHEET MAY BE OF ANY OF THE FOLLOWING, WITH MINIMUM THICKNESS AS NOTED:
FLAT STEEL OR ALUMINUM 3.18 mm
HIGH DENSITY OVERLAYS PLYWOOD 13 mm, 16 mm, OR 19 mm
GALVANIZED SHEET STEEL 2.77 mm

- SIGNS WITH "ROAD WORK 1500 FT." AND "END ROAD WORK" TEXT SHALL BE USED WHEN THE WORK IS NOT COMPLETE AND A HAZARD REMAINS OVERNIGHT.
- THE FLAGPERSON SHALL USE THE SIGN PADDLE DETAILED ON STANDARD SHEET E-102M.
- ALL SIGNS SHALL BE COVERED OR REMOVED AT THE END OF THE WORKING DAY UNLESS REQUIRED FOR THE PROTECTION AND SAFETY OF THE TRAVELING PUBLIC.
- INSTALLATION: SIGNS AND BARRICADES SHALL BE IN PLACE PRIOR TO THE START OF THE MAINTENANCE OPERATION TO WHICH THEY APPLY AND SHALL BE REMOVED PROMPTLY WHEN THE NEED NO LONGER EXISTS. EACH SIGN SHALL BE ERECTED IN A NEAT AND WORKMANLIKE MANNER ON YIELDING WOOD OR METAL POSTS SET SECURELY IN THE GROUND IN ACCORDANCE WITH STD. E-102M, OR ON PORTABLE SUPPORTS WHEN APPROPRIATE. THE INSTALLATION OF SIGNS AND BARRICADES SHALL BE SUBJECT TO THE APPROVAL OF THE ENGINEER.
- ALTHOUGH LISTED AS A MAINTENANCE OPERATION STANDARD SIGN SHEET, THE APPROACH SIGNS SHOWN SHALL BE USED BY CONTRACTORS WHEN WORKING WITHIN OR OUTSIDE PROJECT LIMITS.
- ALL DISTANCES ARE DESIRABLE SPECIFICATIONS. FIELD CONDITIONS SHALL CONTROL THE ACTUAL PLACEMENT.
- SEE STD. E-106M FOR TAPER LENGTHS.
- THE LOCATION OF CHANNELIZING DEVICES SHALL BE BASED ON THE CRITERIA SHOWN ON SHEET E-106M.
- FLOOD LIGHTS SHOULD BE PROVIDED TO MARK THE FLAGPERSON STATIONS AT NIGHT AS NEEDED.
- AT SHORT WORK ZONES WHERE ADEQUATE SIGHT DISTANCE IS AVAILABLE FOR THE SAFE HANDLING OF TRAFFIC ONE FLAGGER MAY BE USED WITH THE APPROVAL OF THE ENGINEER.
- CHANNELIZING DEVICES SHALL BE EXTENDED TO A POINT WHERE THEY ARE VISIBLE TO APPROACHING TRAFFIC.
- THE NUMBER OF CHANNELIZING AND OTHER TRAFFIC CONTROL DEVICES SHOWN ON THIS SHEET ARE FOR ILLUSTRATIVE PURPOSES ONLY. THE ACTUAL NUMBER REQUIRED SHALL BE DETERMINED BASED ON INDIVIDUAL DETOUR CONDITIONS (TAPERS, SPEED LIMITS, LENGTH OF DETOUR CURVE, ETC.).

LEGEND:

■ FLAGPERSON	▨ WORK AREA
■ CHANNELIZING DEVICES (CONES OR DRUMS)	⊙ SIGN & POSTS
⊙ FLASHING ARROW PANEL	▭ TYPE III BARRICADES

OTHER STDS. E-100M E-102M
REQUIRED: E-101M E-106M
NOTE: ALL DIMENSIONS ARE IN MILLIMETERS (mm) EXCEPT WHERE NOTED.

REVISIONS AND CORRECTIONS
JUNE 13, 1997 - ORIGINAL APPROVAL DATE

APPROVED
[Signature]
DIRECTOR OF ENGINEERING
[Signature]
DIRECTOR OF CONSTRUCTION AND MAINTENANCE

MAJOR MAINTENANCE OPERATION LANE CLOSURE

