

TEMPORARY 100mm WHITE LINE, PAINT  
 DURABLE 100mm WHITE LINE, THERMOPLASTIC  
 STA 2+551 TO 2+557 SOLID RT NO PARKING  
 STA 2+576 TO 2+582 SOLID RT NO PARKING

TEMPORARY 150mm WHITE LINE, PAINT  
 DURABLE 150mm WHITE LINE, THERMOPLASTIC  
 STA 2+557 TO 2+576 TARGETS RT PARKING

TEMPORARY 100mm YELLOW LINE, PAINT  
 DURABLE 100mm YELLOW LINE, THERMOPLASTIC  
 STA 2+551 TO 2+602 SOLID LT & RT  
 STA 2+623 TO 2+660 SOLID LT & RT

TEMPORARY CROSSWALK MARKING, PAINT  
 STA 2+605 TO 2+613 LT (TH 68)  
 STA 2+617 LT TO RT  
 STA 2+617 TO 2+623 RT (TH 51)

SPECIAL PROVISION (DURABLE  
 CROSSWALK MARKING, IMPRINTED/COLORIZED)  
 STA 2+605 TO 2+613 LT (TH 68)  
 STA 2+617 LT TO RT  
 STA 2+617 TO 2+623 RT (TH 51)

CONSTRUCT SIDEWALK RAMP W/DETECTABLE  
 WARNING SURFACE (YELLOW)  
 STA 2+605 LT (TYPE 1)  
 STA 2+613 LT (TYPE 1)  
 STA 2+617 LT (TYPE 5)  
 STA 2+617 RT (TYPE 1)  
 STA 2+623 RT (TYPE 1)

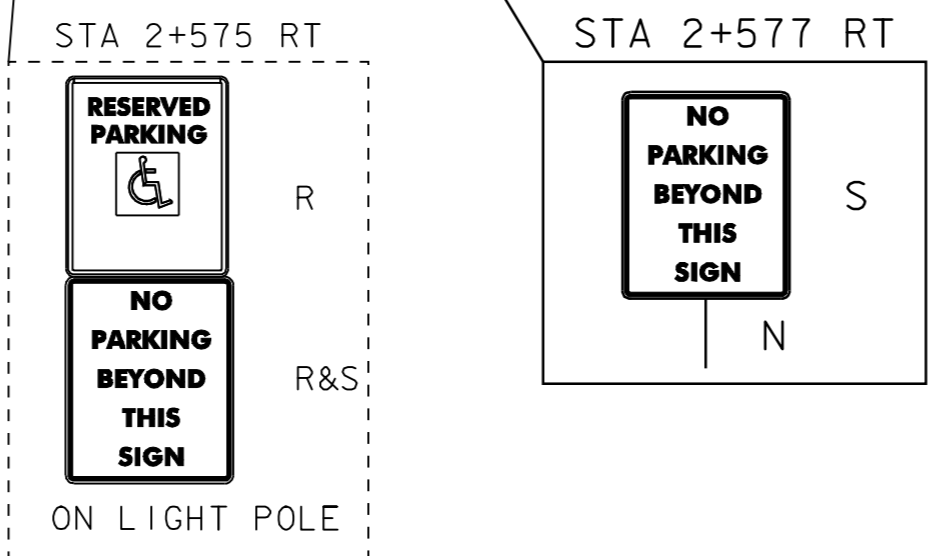
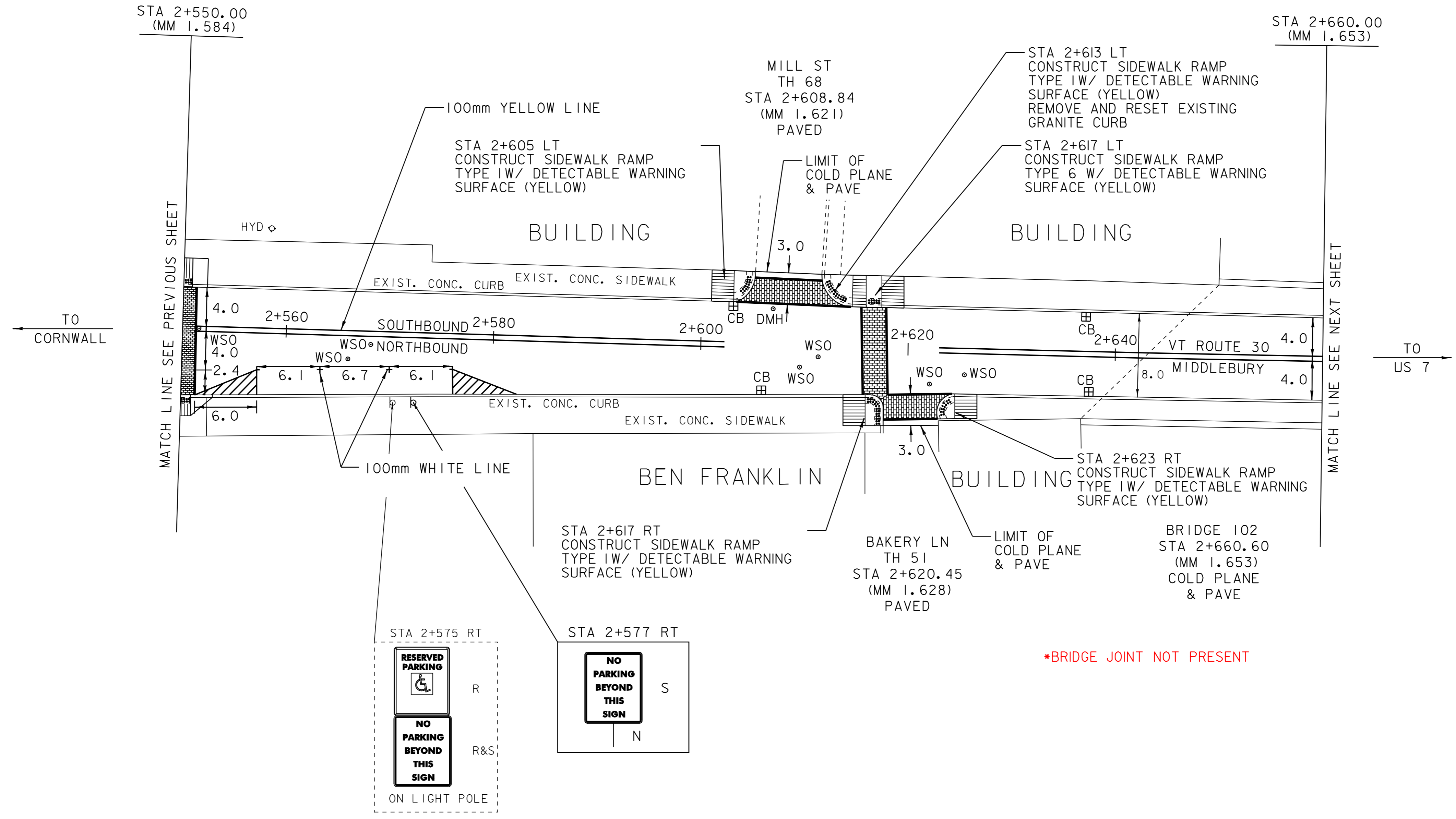
REMOVING AND RESETTING CURB  
 STA 2+613 LT - WAS NOT REQUIRED

CHANGING ELEVATION OF DROP INLETS,  
 CATCH BASINS, OR MANHOLES  
 STA 2+603 LT (CB)  
 STA 2+606 RT (CB)  
 STA 2+606 LT (DMH)  
 STA 2+637 LT (CB)  
 STA 2+637 RT (CB)

ADJUST ELEVATION OF VALVE BOX  
 STA 2+552 LT - DID NOT FIND  
 STA 2+566 RT  
 STA 2+568 RT  
 STA 2+610 RT  
 STA 2+611 RT  
 STA 2+622 RT  
 STA 2+625 RT

REMOVING SIGNS  
 AS SHOWN - 2

ERECTING SALVAGED SIGNS  
 AS SHOWN - 1



\*BRIDGE JOINT NOT PRESENT

UNLESS OTHERWISE NOTED,  
 PARKING SPACES ARE LAID  
 OUT AS FOLLOWS: FIRST  
 AND LAST ARE 6.1 m LONG  
 AND THOSE IN BETWEEN ARE  
 6.7 m LONG.

NOT TO SCALE

NOTE: ALL DIMENSIONS IN METERS EXCEPT AS INDICATED

LEGEND

- R = REMOVE EXISTING
- S = SALVAGE
- R&S = REMOVE AND SALVAGE
- N = NEW
- RET = RETAIN
- B-B = BACK TO BACK

PAVING LAYOUT 13

PROJECT NAME: MIDDLEBURY	FILE NAME: /pave/0ld048/pd048.dgn.dgn	PLOT DATE: 06-OCT-2008 13:0
PROJECT NUMBER: STP 2304(I)S	PROJECT LEADER: PTS	DRAWN BY: MRS
	IPARM FILE NAME: pd048I13.1	CHECKED BY: NLL
		SHEET 31 OF 103