

TEMPORARY 100mm WHITE LINE, PAINT
 DURABLE 100mm WHITE LINE, THERMOPLASTIC
 STA 1+840 TO 1+910 SOLID LT & RT
 STA 1+913 TO 1+935 SOLID RT
 STA 1+913 TO 1+980 SOLID LT
 STA 1+930 TO 1+935 SOLID RT NO PARKING
 STA 1+960 TO 1+965 SOLID RT NO PARKING
 STA 1+972 TO 1+978 SOLID RT NO PARKING

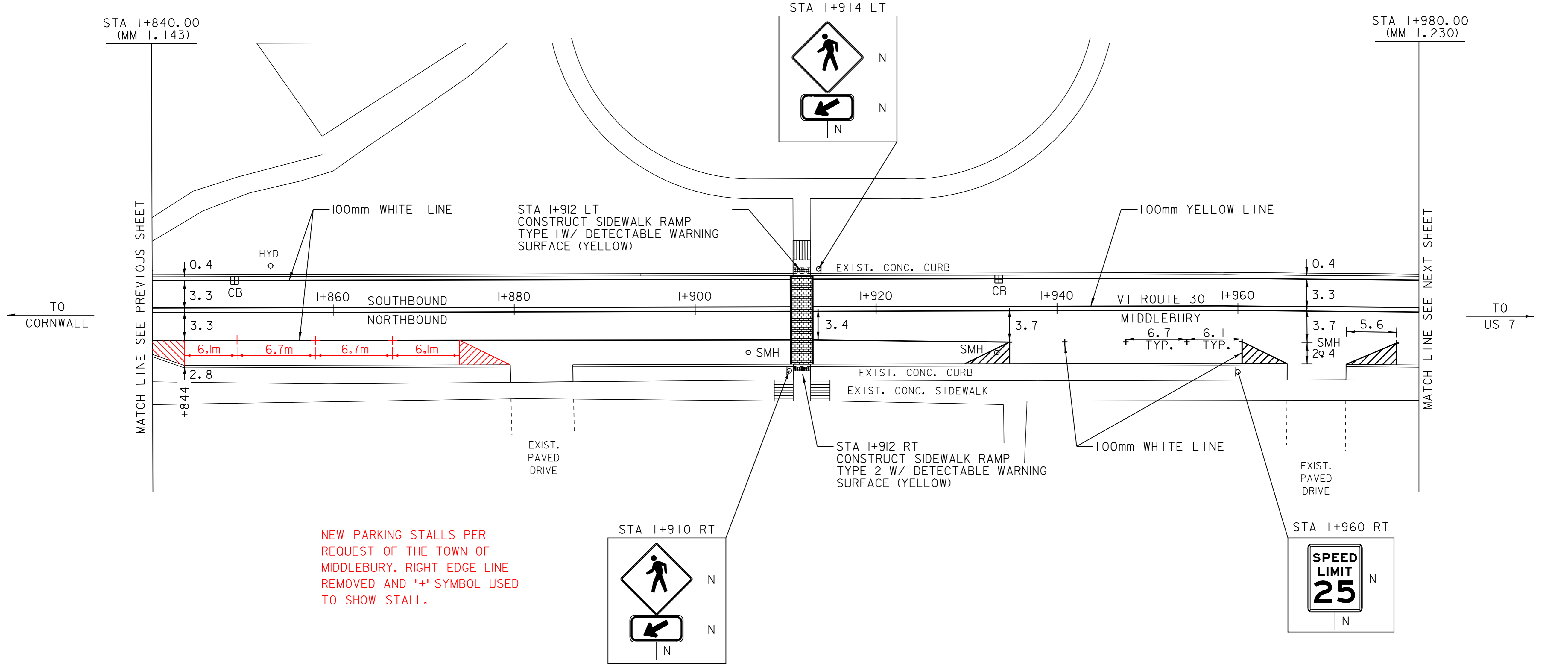
TEMPORARY 100mm YELLOW LINE, PAINT
 DURABLE 100mm YELLOW LINE, THERMOPLASTIC
 STA 1+840 TO 1+910 SOLID LT & RT
 STA 1+913 TO 1+980 SOLID LT & RT

TEMPORARY CROSSWALK MARKING, PAINT
 STA 1+912 LT TO RT
 SPECIAL PROVISION (DURABLE
 CROSSWALK MARKING, IMPRINTED/COLORIZED)
 STA 1+912 LT TO RT
 CONSTRUCT SIDEWALK RAMP W/DETECTABLE
 WARNING SURFACE (YELLOW)
 STA 1+912 LT (TYPE 1)
 STA 1+912 RT (TYPE 2)

CHANGING ELEVATION OF DROP INLETS,
 CATCH BASINS, OR MANHOLES
 STA 1+849 LT (CB)
 STA 1+933 LT (CB)
 CHANGING ELEVATION OF SEWER MANHOLES
 STA 1+906 RT
 STA 1+933 RT
 STA 1+969 RT

TEMPORARY 150mm WHITE LINE, PAINT
 DURABLE 150mm WHITE LINE, THERMOPLASTIC
 STA 1+935 TO 1+960 TARGETS RT PARKING
 STA 1+978 TO 1+980 TARGETS RT PARKING

* NOTE
 STA 1+840 TO STA 1+935 RT
 NO PARKING ALLOWED. LOCATION OF
 EXISTING "NO PARKING" SIGNS NOT
 SHOWN ON THESE PLANS.



NEW PARKING STALLS PER
 REQUEST OF THE TOWN OF
 MIDDLEBURY. RIGHT EDGE LINE
 REMOVED AND "+" SYMBOL USED
 TO SHOW STALL.

UNLESS OTHERWISE NOTED,
 PARKING SPACES ARE LAID
 OUT AS FOLLOWS: FIRST
 AND LAST ARE 6.1 m LONG
 AND THOSE IN BETWEEN ARE
 6.7 m LONG.

LEGEND

R	=	REMOVE EXISTING
S	=	SALVAGE
R&S	=	REMOVE AND SALVAGE
N	=	NEW
RET	=	RETAIN
B-B	=	BACK TO BACK

PAVING LAYOUT 8

PROJECT NAME:	MIDDLEBURY
PROJECT NUMBER:	STP 2304(I)S
FILE NAME:	/pave/01d048/pd048.dgn
PROJECT LEADER:	PTS
IPARM FILE NAME:	pd048i08.i
PLOT DATE:	06-OCT-2008 13:00
DRAWN BY:	MRS
CHECKED BY:	NLL
SHEET	26 OF 103

NOT TO SCALE

NOTE: ALL DIMENSIONS IN METERS EXCEPT AS INDICATED