

DURABLE 4" YELLOW LINE
 STA 123+00 ~ 126+88 C.L. (DBL. CTR. SOLID)
 STA 127+28 ~ 127+45 C.L. (DBL. CTR. SOLID)
 STA 127+53 ~ 128+00 C.L. (DBL. CTR. SOLID)
 STA 127+07 RT (DBL. CTR. SOLID--ELM ST.)

DURABLE 4" WHITE LINE
 STA 123+00 ~ 127+45 RT (EDGE--SOLID)
 STA 123+00 ~ 126+96 LT (EDGE--SOLID)
 STA 127+19 ~ 127+45 LT (EDGE--SOLID)
 STA 127+53 ~ 128+00 RT (EDGE--SOLID)
 STA 127+53 ~ 128+00 LT (EDGE--SOLID)

REMOVING SIGNS
 AS SHOWN--5 EA.
ERECTING SALVAGED SIGNS
 AS SHOWN--1 EA.

DURABLE X WALK
W/ DIAGONAL LINES (MOD.)
 STA 127+49 LT - RT (M.L.)
 STA 126+96 ~ 127+18 LT (ELM ST.)

DURABLE 24" STOP BAR
 STA 123+00 LT--RT 4A
 STA 126+96 ~ 127+08 LT--ELM ST.

CHANGING ELEV. OF DI. CB. OR MH
 STA 123+48 RT--TMH

DURABLE LETTER OR SYMBOL
 STA 125+55 LT (AHEAD)(M.L.)
 STA 125+94 LT (STOP)(M.L.)
 STA 127+00 LT (STOP)(ELM ST.)

TEMPORARY 4" YELLOW LINE
 STA 123+00 ~ 126+88 C.L. (DBL. CTR. SOLID)
 STA 127+28 ~ 127+45 C.L. (DBL. CTR. SOLID)
 STA 127+53 ~ 128+00 C.L. (DBL. CTR. SOLID)
 STA 127+07 RT (DBL. CTR. SOLID--ELM ST.)

TEMPORARY 4" WHITE LINE
 STA 123+00 ~ 127+45 RT (EDGE--SOLID)
 STA 123+00 ~ 126+96 LT (EDGE--SOLID)
 STA 127+19 ~ 127+45 LT (EDGE--SOLID)
 STA 127+53 ~ 128+00 RT (EDGE--SOLID)
 STA 127+53 ~ 128+00 LT (EDGE--SOLID)

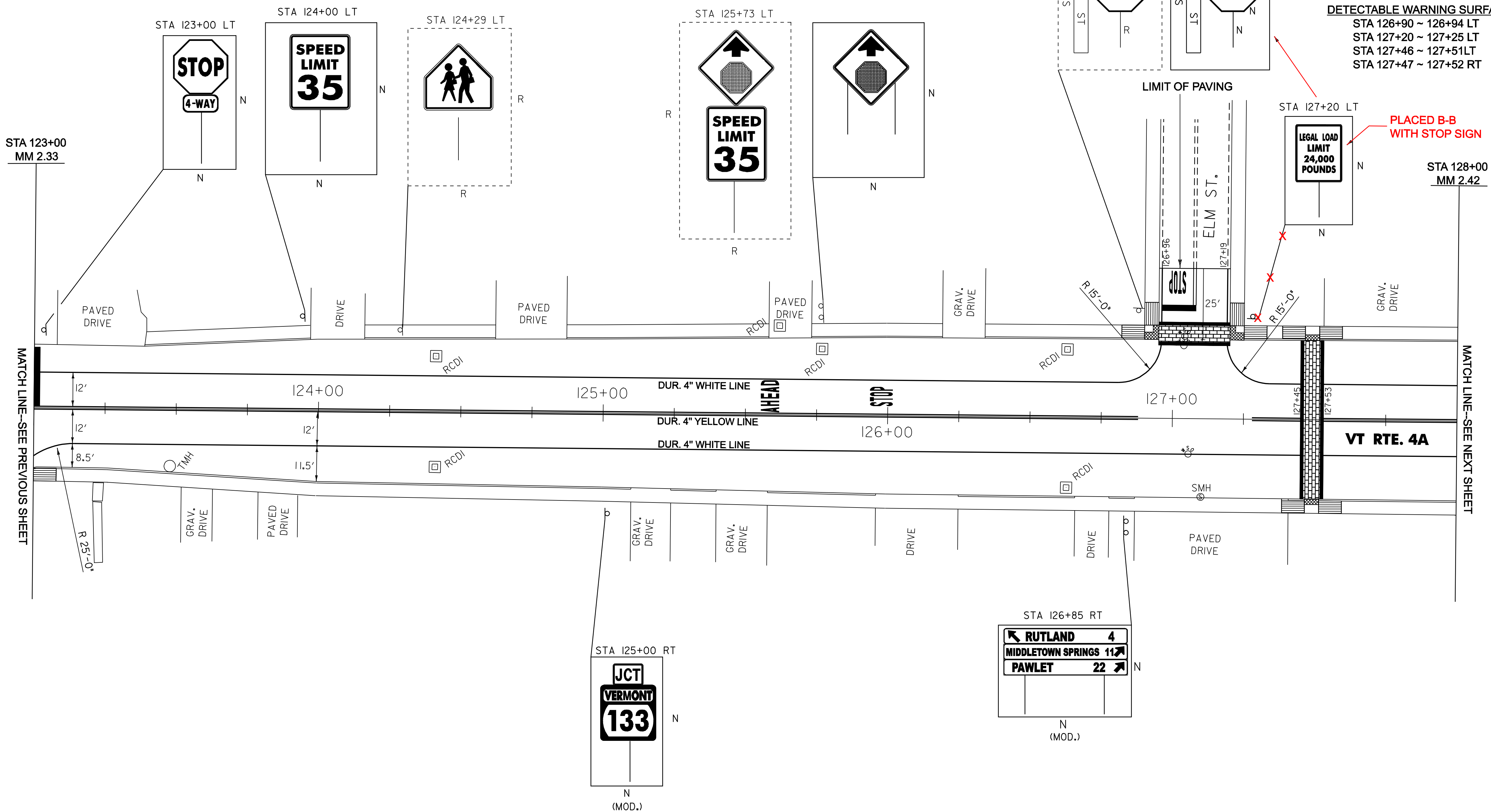
TEMPORARY X WALK
W/ DIAGONAL LINES
 STA 127+49 LT - RT (M.L.)
 STA 126+96 ~ 127+18 LT (ELM ST.)

TEMPORARY 24" STOP BAR
 STA 123+00 LT--RT 4A
 STA 126+96 ~ 127+08 LT--ELM ST.

REHABILITATING DI. CB. OR MH
 STA 124+41 LT--DI
 STA 124+41 RT--DI
 STA 125+77 LT--DI (2)
 STA 126+63 LT--DI
 STA 126+63 RT--DI

TEMPORARY LETTER OR SYMBOL
 STA 125+55 LT (AHEAD)(M.L.)
 STA 125+94 LT (STOP)(M.L.)
 STA 127+00 LT (STOP)(ELM ST.)

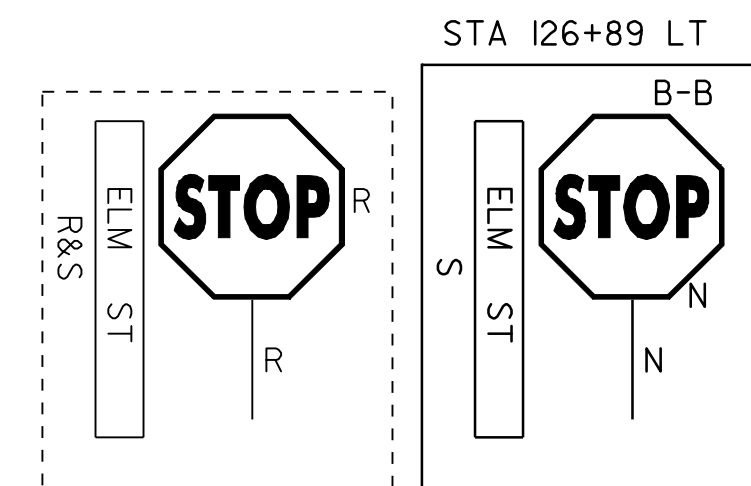
CONSTRUCT SIDEWALK RAMP
 STA 123+00 ~ 123+08 RT--TYPE 1
 STA 126+82 ~ 126+90 LT--TYPE 6
 STA 126+90 ~ 126+94 LT--TYPE 6(ELM ST.)
 STA 127+20 ~ 127+25 LT--TYPE 6(ELM ST.)
 STA 127+25 ~ 127+33 LT--TYPE 6
 STA 127+38 ~ 127+46 LT--TYPE 6
 STA 127+51 ~ 127+59 LT--TYPE 6
 STA 127+38 ~ 127+46 RT--TYPE 6
 STA 127+52 ~ 127+60 RT --TYPE 6



DETECTABLE WARNING SURFACE
 STA 126+90 ~ 126+94 LT
 STA 127+20 ~ 127+25 LT
 STA 127+46 ~ 127+51 LT
 STA 127+47 ~ 127+52 RT

PLACED B-B WITH STOP SIGN

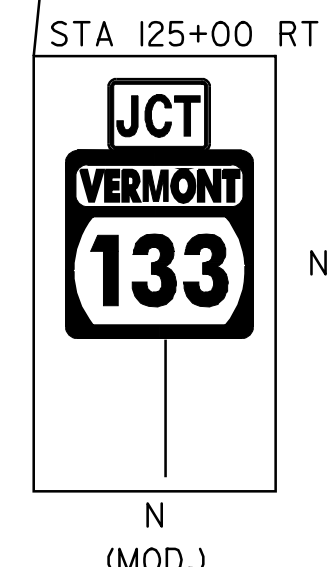
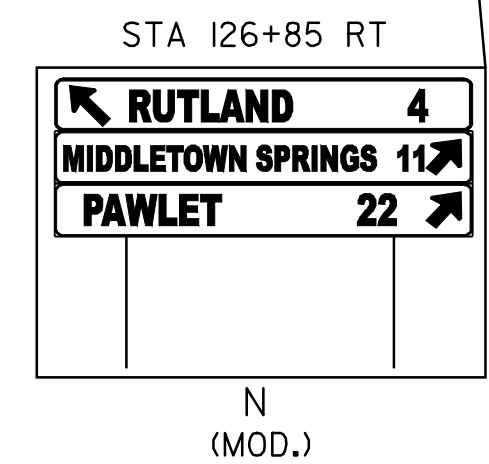
LIMIT OF PAVING



ELM ST.

STA 128+00 MM 2.42

VT RTE. 4A



NOT TO SCALE

| | | |
|--|-----------------------------------|-----------------------------|
| PAVING PROJECT LAYOUT #6 VT RTE. 4A | PROJECT NAME: WEST RUTLAND | PLOT DATE: 06-FEB-2009 15:2 |
| | PROJECT NUMBER: STP 260(K)S | DRAWN BY: JLR |
| | FILE NAME: /pave/0ld046/pd046.dgn | CHECKED BY: JLR |
| | PROJECT LEADER: WOOLAVER | SHEET 14 OF 45 |