

TEMPORARY AND DURABLE 100mm WHITE LINE

- STA 10+230 TO 10+317 SOLID LT
- STA 10+230 TO 10+395 SOLID RT
- STA 10+311 TO 10+317 SOLID LT (NO PARKING)
- STA 10+317 TO 10+322 SOLID LT (TH 314)
- STA 10+332 TO 10+336 SOLID LT (TH 314)
- STA 10+338 TO 10+344 SOLID LT (NO PARKING)
- STA 10+338 TO 10+395 SOLID LT

TEMPORARY AND DURABLE 100mm YELLOW LINE

- STA 10+230 TO 10+321 SOLID LT & RT
- STA 10+327 DOUBLE SOLID LT (TH 314)
- STA 10+333 TO 10+395 SOLID LT & RT

DURABLE LETTER OR SYMBOL (TYPE I TAPE)

- STA 10+325 LT - "STOP" (TH 314)

TEMPORARY LETTERS OR SYMBOLS

- STA 10+325 LT - "STOP" (TH 314)

DURABLE 600mm STOP BAR (TYPE I TAPE)

- STA 10+327 LT (TH 314)

TEMPORARY 600mm STOP BAR

- STA 10+327 LT (TH 314)

TEMPORARY CROSSWALK MARKINGS W/DIAGONAL LINES

- STA 10+317 TO 10+336 LT
- STA 10+337 LT TO RT

DURABLE CROSSWALK MARKINGS W/DIAGONAL LINES (MOD)

- STA 10+317 TO 10+336 LT
- STA 10+337 LT TO RT

CHANGING ELEV. OF DI, CB, OR MH

- STA 10+234 LT (DMH)
- STA 10+322 LT (TMH)
- STA 10+377 LT (TMH)

REHABILITATION OF DI, CB, OR MH, CLASS I

- STA 10+316 LT (CB)
- STA 10+328 RT (CB)
- STA 10+339 LT (CB)
- STA 10+350 RT (CB)

ADJUST ELEVATION OF VALVE BOX

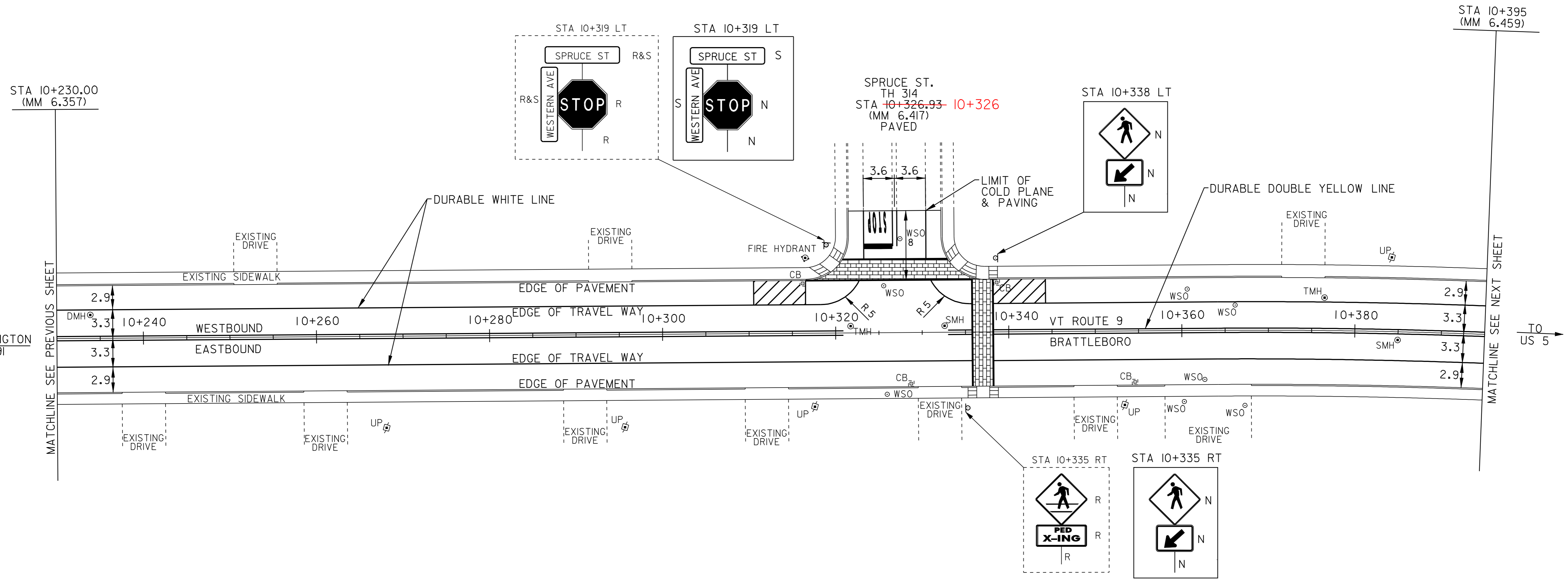
- STA 10+326 LT
- STA 10+327 LT-TH 314
- STA 10+360 LT
- STA 10+363 RT
- STA 10+365 LT

CHANGING ELEVATION OF SEWER MANHOLE

- STA 10+332 LT
- STA 10+383 RT

REMOVING SIGNS
AS SHOWN - 5 ✓

ERECTING SALVAGED SIGNS
AS SHOWN - 2



STA 10+230.00
(MM 6.357)

STA 10+395
(MM 6.459)

TO WILMINGTON
& I-91

TO
US 5

MATCHLINE SEE PREVIOUS SHEET

MATCHLINE SEE NEXT SHEET

- LEGEND**
- R = REMOVE EXISTING
 - S = SALVAGE
 - R&S = REMOVE AND SALVAGE
 - N = NEW
 - RET = RETAIN
 - B-B = BACK TO BACK

NOTE: ALL DIMENSIONS IN METERS EXCEPT AS INDICATED

NOT TO SCALE

PAVING PROJECT LAYOUT #20	PROJECT NAME: BRATTLEBORO	PLOT DATE: \$DATE\$
	PROJECT NUMBER: ST-SIP_2303(I)S	DRAWN BY: JAC
	FILE NAME: \PAVE\QDQ26\PDQ26.dgn	CHECKED BY: NLL
	DESIGNED BY: -	SHEET 28 OF 55