

TEMPORARY 100mm WHITE LINE
STA 7+885 TO 7+930 SOLID LT (LANE LINE)

TEMPORARY AND DURABLE 100mm WHITE LINE
STA 7+745 TO 7+761 SOLID LT
STA 7+745 TO 7+760 SOLID RT
STA 7+752 TO 7+761 SOLID LT (NO PARKING)
STA 7+753 TO 7+761 SOLID RT (NO PARKING)
STA 7+770 TO 7+786 SOLID LT (NO PARKING)
STA 7+770 TO 7+776 SOLID RT (NO PARKING)
STA 7+770 TO 7+930 SOLID LT
STA 7+770 TO 7+789 SOLID RT
STA 7+782 TO 7+789 SOLID RT (NO PARKING)
STA 7+789 TO 7+801 SOLID RT (TH 714)
STA 7+800 TO 7+806 SOLID RT (NO PARKING)
STA 7+800 TO 7+869 SOLID RT
STA 7+801 TO 7+805 SOLID RT (TH 714)
STA 7+863 TO 7+870 SOLID LT (NO PARKING)
STA 7+864 TO 7+870 SOLID LT (NO PARKING)
STA 7+868 TO 7+872 SOLID RT (TH 714)
STA 7+872 TO 7+878 SOLID LT (NO PARKING)
STA 7+872 TO 7+880 SOLID RT (TH 714)
STA 7+885 TO 7+891 SOLID RT (NO PARKING)
STA 7+885 TO 7+930 SOLID RT

TEMPORARY AND DURABLE 100mm WHITE LINE
STA 7+745 TO 7+758 SOLID LT & RT
STA 7+764 DOUBLE SOLID RT (TH 710)
STA 7+770 TO 7+787 SOLID LT & RT
STA 7+795 DOUBLE SOLID RT (TH 714)
STA 7+799 TO 7+870 DOUBLE SOLID LT (ISLAND)
STA 7+799 TO 7+870 DOUBLE SOLID RT (ISLAND)
STA 7+875 DOUBLE SOLID RT (TH 714)
STA 7+885 TO 7+930 SOLID LT & RT

DURABLE LETTER OR SYMBOL (TYPE+TAPE)
STA 7+765 RT - "STOP" (TH 710)
STA 7+806 RT - "STOP" (TH 714)
STA 7+835 RT - "SCHOOL"
STA 7+877 RT - "STOP" (TH 714)
STA 7+888 LT - LEFT TURN ARROW
STA 7+891 LT - "ONLY"
STA 7+926 LT - LEFT TURN ARROW
STA 7+930 LT - "ONLY"



ADJUST ELEVATION OF VALVE BOX
STA 7+762 RT
STA 7+763 LT
STA 7+764 LT
STA 7+765 LT
STA 7+767 LT
STA 7+800 LT
STA 7+805 LT

CHANGING ELEVATION OF SEWER MANHOLE
STA 7+763 RT
STA 7+787 RT

REMOVING SIGNS
AS SHOWN - 17 18

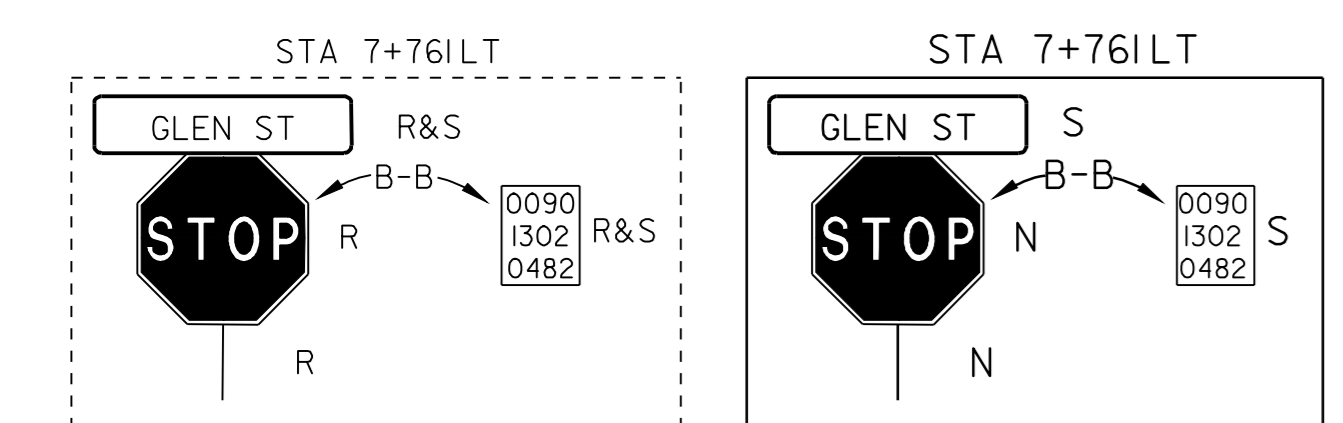
ERECTING SALVAGED SIGNS
AS SHOWN - 7

TEMPORARY LETTERS OR SYMBOLS
STA 7+765 RT - "STOP" (TH 710)
STA 7+806 RT - "STOP" (TH 714)
STA 7+835 RT - "SCHOOL"
STA 7+877 RT - "STOP" (TH 714)
STA 7+888 LT - LEFT TURN ARROW
STA 7+926 LT - LEFT TURN ARROW

CHANGING ELEV. OF DI, CB, OR MH
STA 7+757 LT (CB)
STA 7+757 RT (CB)
STA 7+778 RT (CB)
STA 7+874 RT (CB)
STA 7+887 LT (CB)
STA 7+904 RT (CB)

DURABLE CROSSWALK MARKINGS W/DIAGONAL LINES (MOD)
STA 7+759 TO 7+768 LT
STA 7+759 TO 7+768 RT
STA 7+769 LT & RT
STA 7+785 TO 7+800 RT
STA 7+871 LT TO RT
STA 7+872 TO 7+887 RT

DURABLE LETTER OR SYMBOL
7+819 RT BIKER
7+821 RT ARROW
7+863 LT ARROW
7+865 LT BIKER

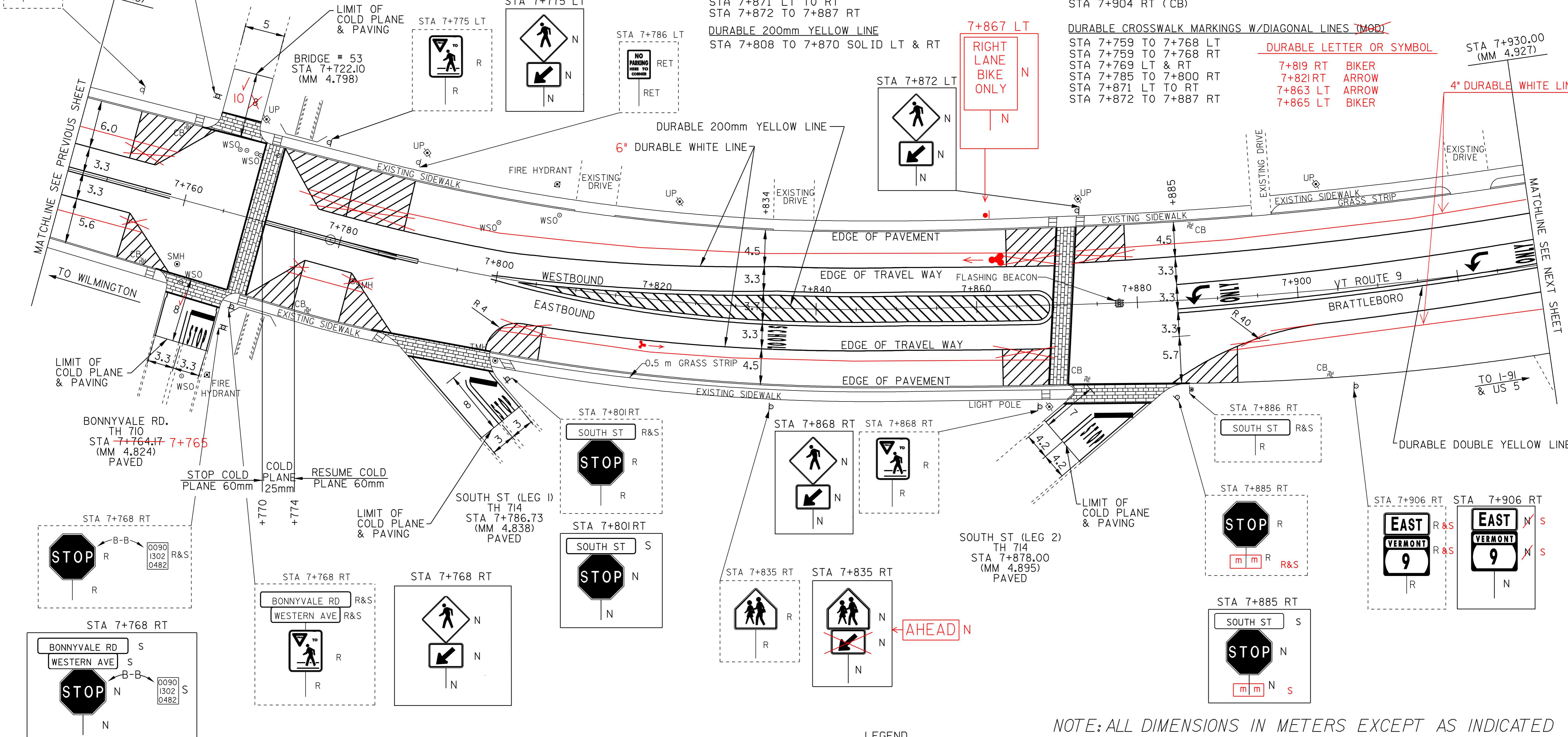


DURABLE 100mm WHITE LINE (TYPE+TAPE)
STA 7+885 TO 7+930 SOLID LT (LANE LINE)

DURABLE 600mm STOP BAR (TYPE+TAPE)
STA 7+764 RT (TH 710)
STA 7+800 RT (TH 714)
STA 7+878 RT (TH 714)

TEMPORARY CROSSWALK MARKINGS W/DIAGONAL LINES
STA 7+759 TO 7+768 LT
STA 7+759 TO 7+768 RT
STA 7+769 LT & RT
STA 7+785 TO 7+800 RT
STA 7+871 LT TO RT
STA 7+872 TO 7+887 RT

DURABLE 200mm YELLOW LINE
STA 7+808 TO 7+870 SOLID LT & RT



BIKE LANES ON THIS SHEET

LEGEND
R = REMOVE EXISTING
S = SALVAGE
R&S = REMOVE AND SALVAGE
N = NEW
RET = RETAIN
B-B = BACK TO BACK

NOTE: ALL DIMENSIONS IN METERS EXCEPT AS INDICATED

PAVING PROJECT LAYOUT #6	PROJECT NAME: BRATTLEBORO	FILE NAME: ZPAVE\01026\PD026.dgn	PLOT DATE: \$DATE\$
	PROJECT NUMBER: ST-STP_2303(1)S	PROJECT LEADER: WRH	DRAWN BY: JAC
	DESIGNED BY: _____	CHECKED BY: NLL	SHEET 13 OF 55
	CLD REF. NO.: pd026106.1		

NOT TO SCALE