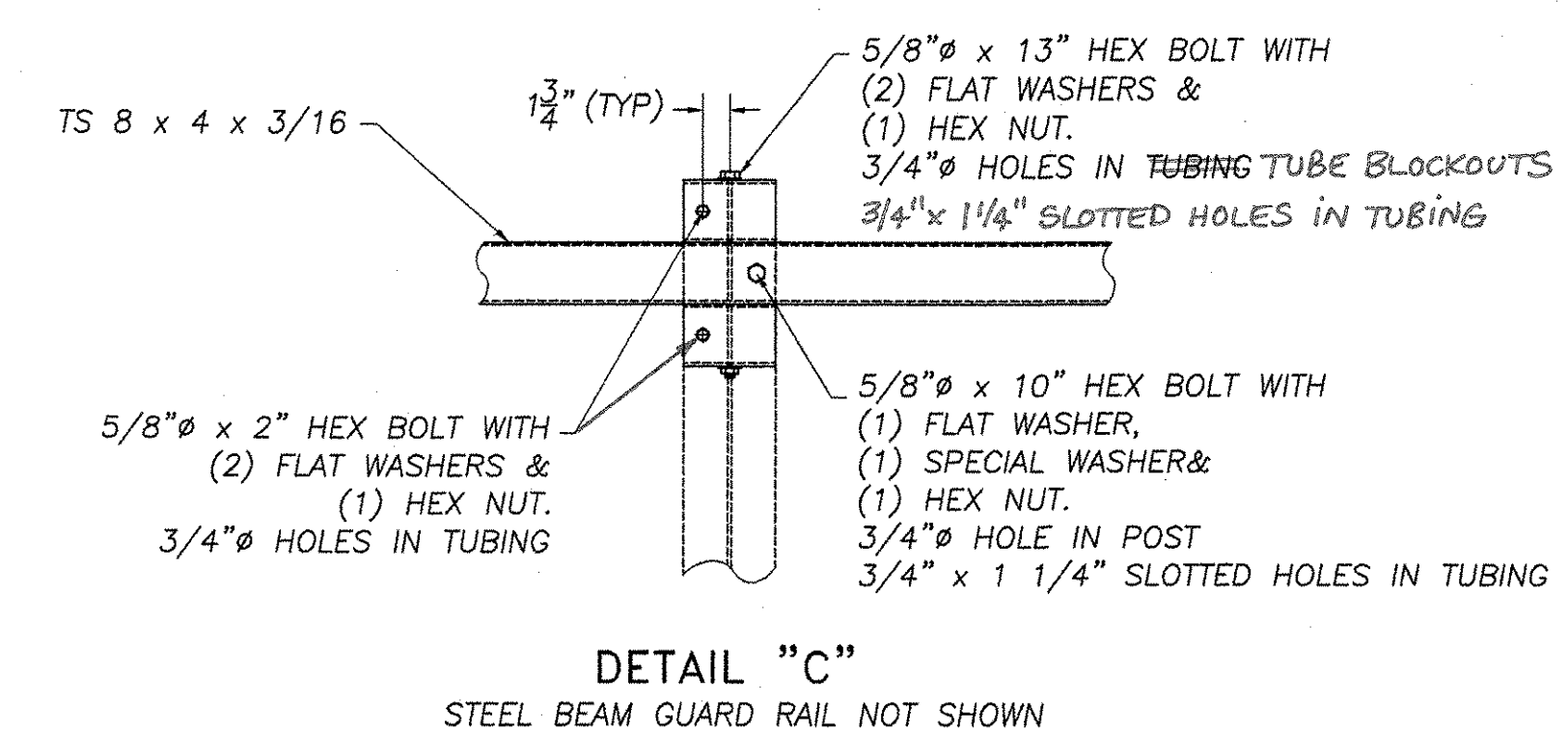
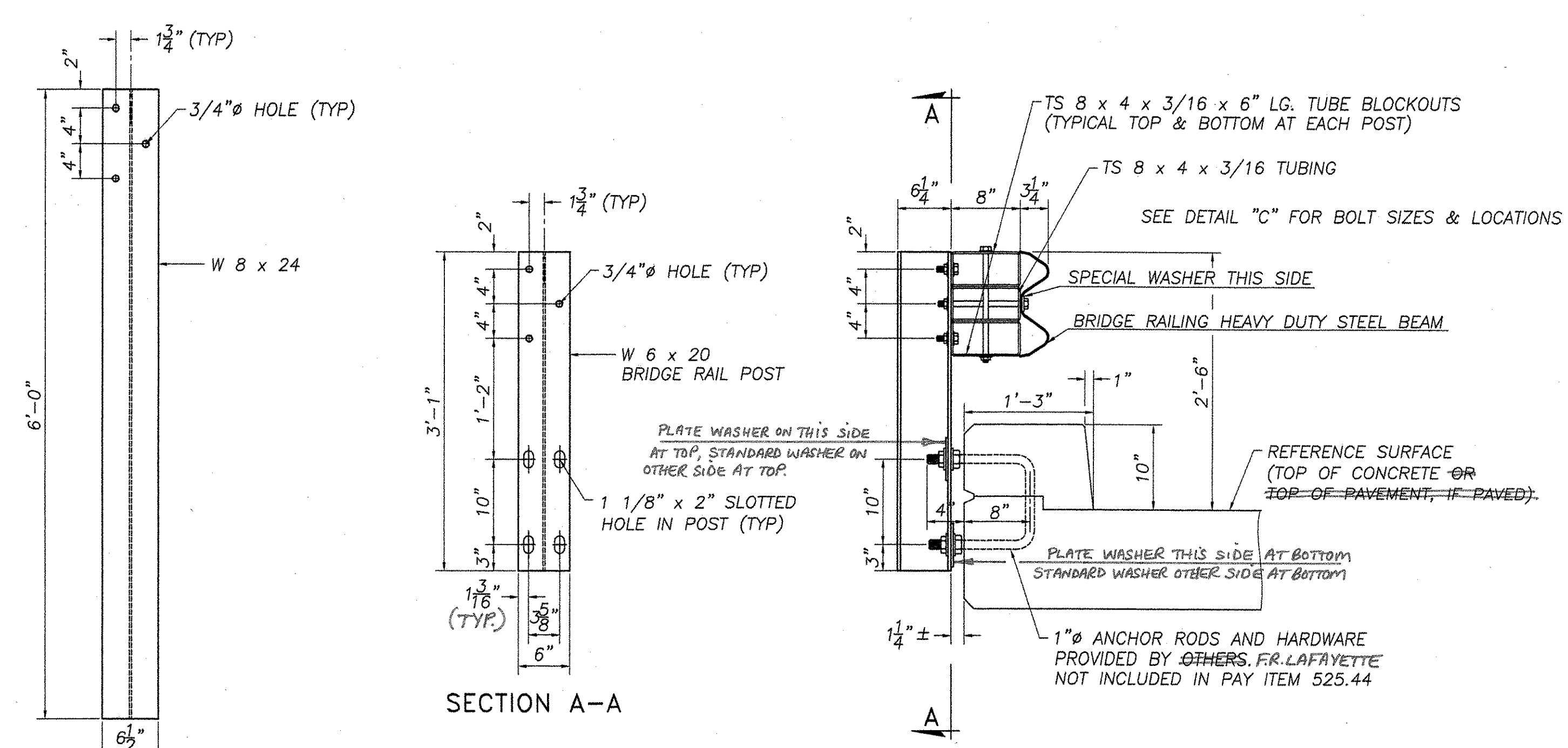
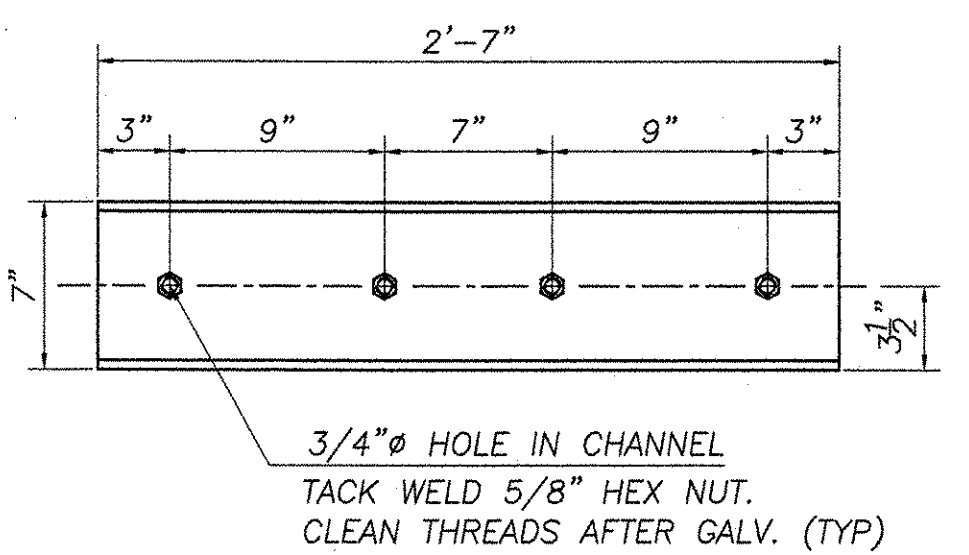
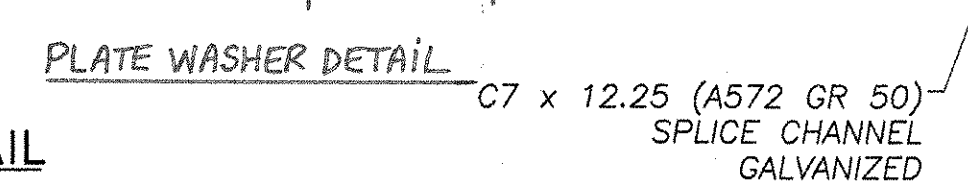
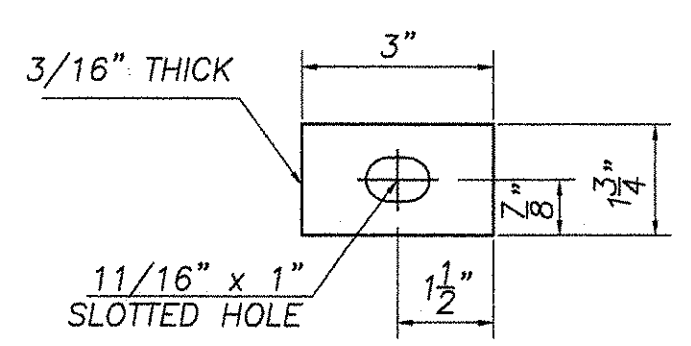
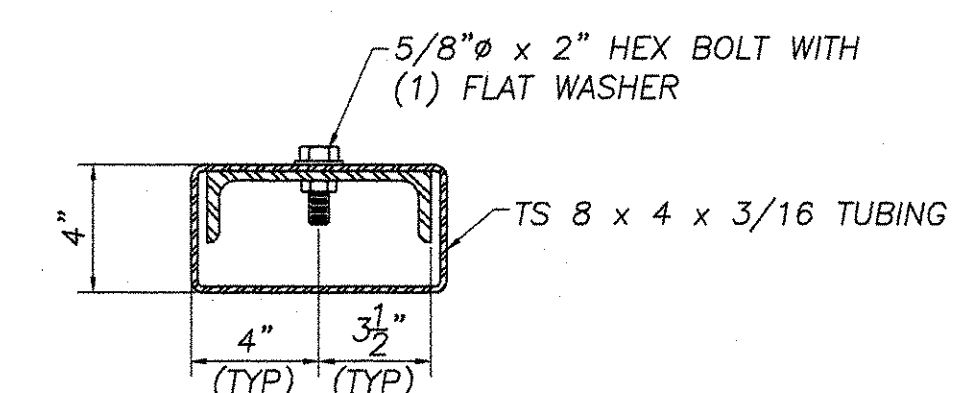


BILL OF MATERIAL					
Mk.	Qty.	Description	Size	Length	Material
POST					
6		fascia mounted post	W6 x 20	3'-1"	A572 gr 50
4		APPROACH transition post	W8 x 24	6'-0"	A572 gr 50
*	12	u shaped anchor bolt	1" ø	12"	A449
*	24	plate washer	1/4" x 2"	5"	A572 gr 50
*	24	hex nut	1" ø	---	A563 gr DH
*	24	round washer	1" ø	---	F436
TUBE					
2		bridge rail tube	TS 8" x 4" x 3/16"	11' 4-1/4"	A500 gr B
2		bridge rail tube	TS 8" x 4" x 3/16"	14' 5-1/4"	A500 gr B
10		hex bolt	5/8" ø	10"	A325
10		hex nut	5/8" ø	---	A563 gr DH
10		washer	5/8" ø	---	F436
10		special plate washer	3/4" x 1-3/4"	3"	A36
2		splice bracket	C7 x 12.25	2'-7"	A572 gr 50
8		hex bolt	5/8" ø	2"	A325
8		hex nut	5/8" ø	---	A563 gr DH
8		washer	1/4" x 1-3/4"	3"	F436
TUBING BLOCKOUT					
20	12	blockout	TS 8" x 4" x 3/16"	6"	A500 gr B
20	12	hex bolt	5/8" ø	2"	A325
10		hex bolt	5/8" ø	13"	A325
30	22	hex nut	5/8" ø	---	A563 gr DH
60	44	washer	5/8" ø	---	F436
W BEAM					
4		10 ga w beam railing	6'-3" spacing	12'-6"	M180 b2
48	24	splice bolt	5/8" ø	1-1/4"	A307
48	24	double recess hex nut	5/8" ø	---	A563 gr A



APPROACH
TRANSITION POST
W8x24 (A588)

FASCIA MOUNTED POST WITH CURB
W6x20



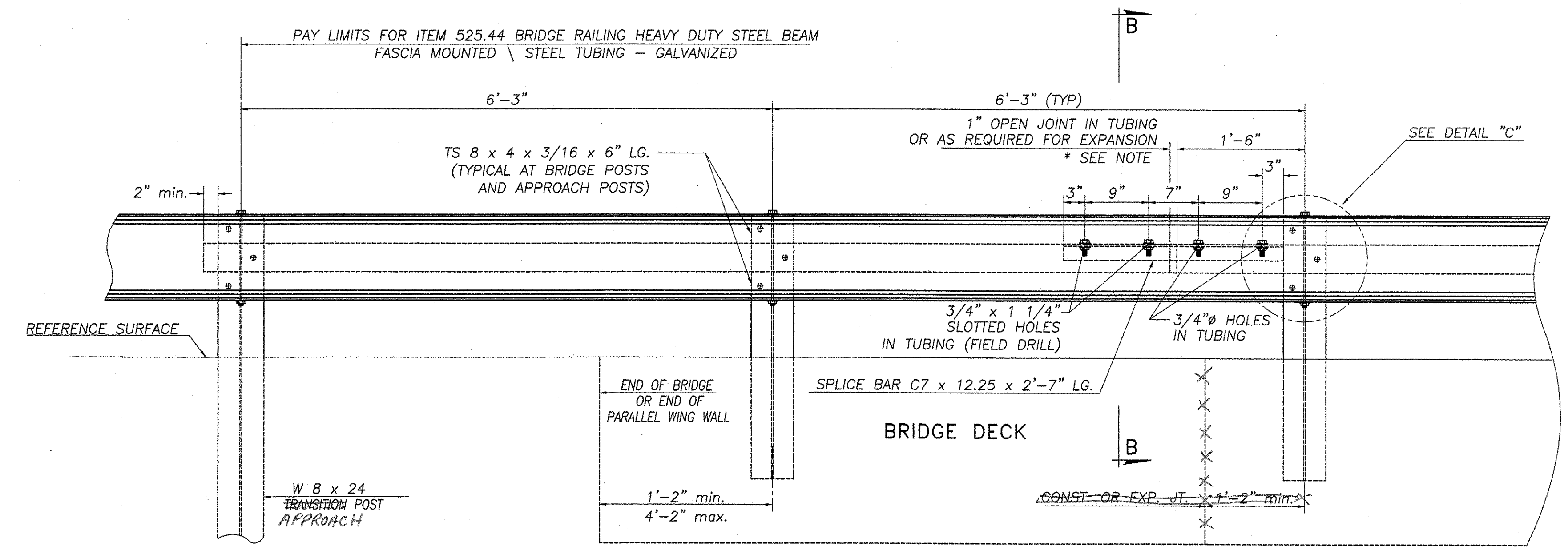
PARTIAL SECTION B-B
SHOWING TUBE & SPLICE ONLY

SPECIAL WASHER DETAIL

SPlice BAR DETAIL

GENERAL ERECTION NOTES

- Heavy duty steel beam guard rail shall conform to VT specification 732.
- Structural steel tubing shall conform to VT specification 732 galvanized after fabrication in accordance with AASHTO M 111
- Anchor bolts, nuts and washers shall be galvanized in accordance with AASHTO M232 and shall conform to VT specification 714 unless otherwise noted
- Bridge rail posts, special washers, plate washers and splice bars shall conform to AASHTO M223/M223M galvanized after fabrication in accordance with AASHTO M 111
- All bolts and related hardware shall conform to AASHTO M164 type 1 bolts, hot dipped or mechanically galvanized per specification.
- All posts shall be set to normal grade
- Splices shall lap in direction of traffic flow.
- Erect delineator every 5th post or approximately 30 feet apart. payment shall be subsidiary to other items.
- A railing joint splice shall be provided at each superstructure expansion joint
- all field cut or drilled areas shall be coated with zinc rich paint.
- For radii less than 950ft, the steel tubing shall be shop bent to fit the applicable curve.
- The drop-weight tear test in section 732 shall not apply to the structural tubing on this standard.



RAILING ELEVATION VIEW
(SHOWN LOOKING FROM C WITHOUT CURB)

* NOTE 3/4" min. SPLICE OPENING WILL VARY DEPENDING ON AMOUNT OF EXPANSION REQUIRED
BOLTS IN SLOTTED HOLES SHALL NOT BE SO TIGHT AS TO PREVENT SLIDING BETWEEN THE TUBING AND THE SPLICE CHANNEL

REVISIONS		
No.	Remarks	Date
0	Initial submittal	6/20/05

RECEIVED
CK'D BY: T.E. OK'D BY: _____
JUL 07 2005
RESUBMIT: _____ APPROVED AS NOTED
BY TAD DATE 7.20.05

HIGHWAY SAFETY CORP.
GLASTONBURY, CT

ITEM 525.44 BRIDGE RAILING HDSB
FASCIA MOUNTED STEEL TUBING
TOWN OF FAIRFIELD, VERMONT
VT ROUTE 6 OVER UNNAMED BROOK- BRIDGE NO. 2
PROJECT AC STP ST0298(0)

DRAWN: C CRAMER
CHECKED: [Signature]
DATE: 6/16/05
SCALE: NTS
HSC REFERENCE NO.: 1512
SIZE: D REVISION: 0
SHEET NO.: 2 of 2

GENERAL CONTRACTOR: F.R. LAFAYETTE, INC.