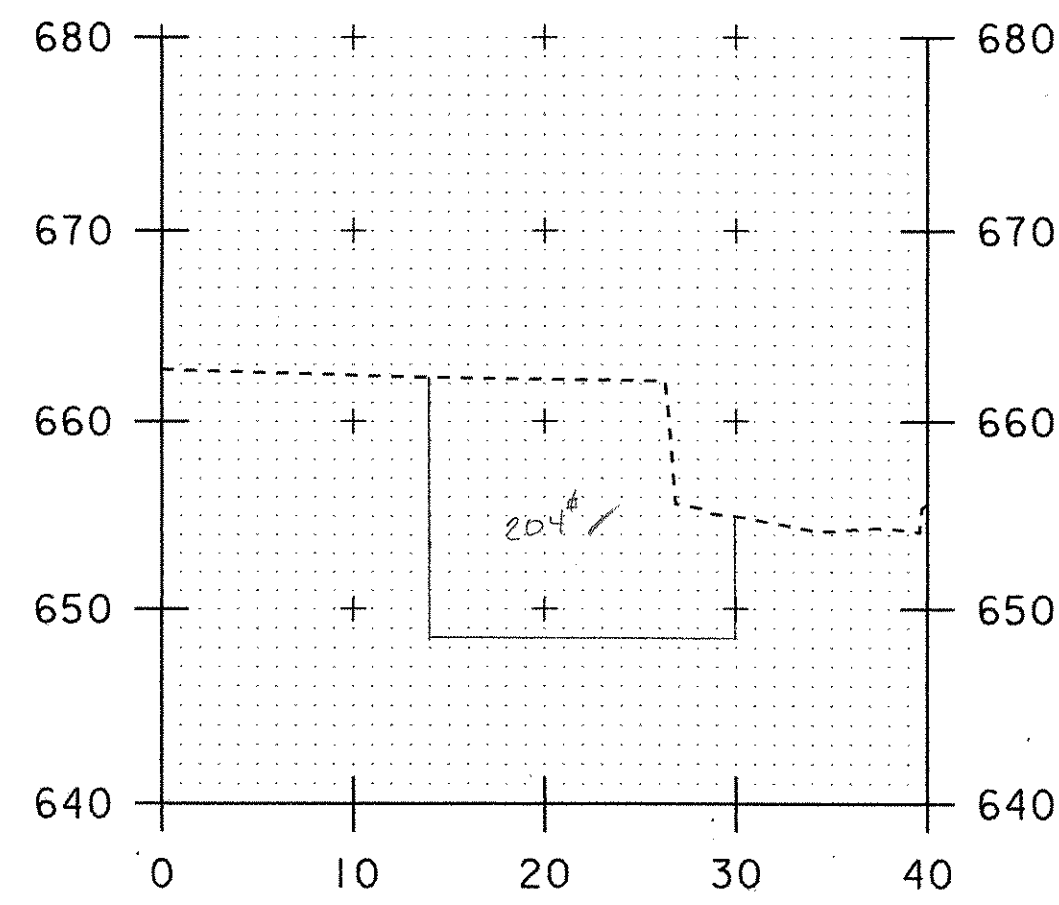
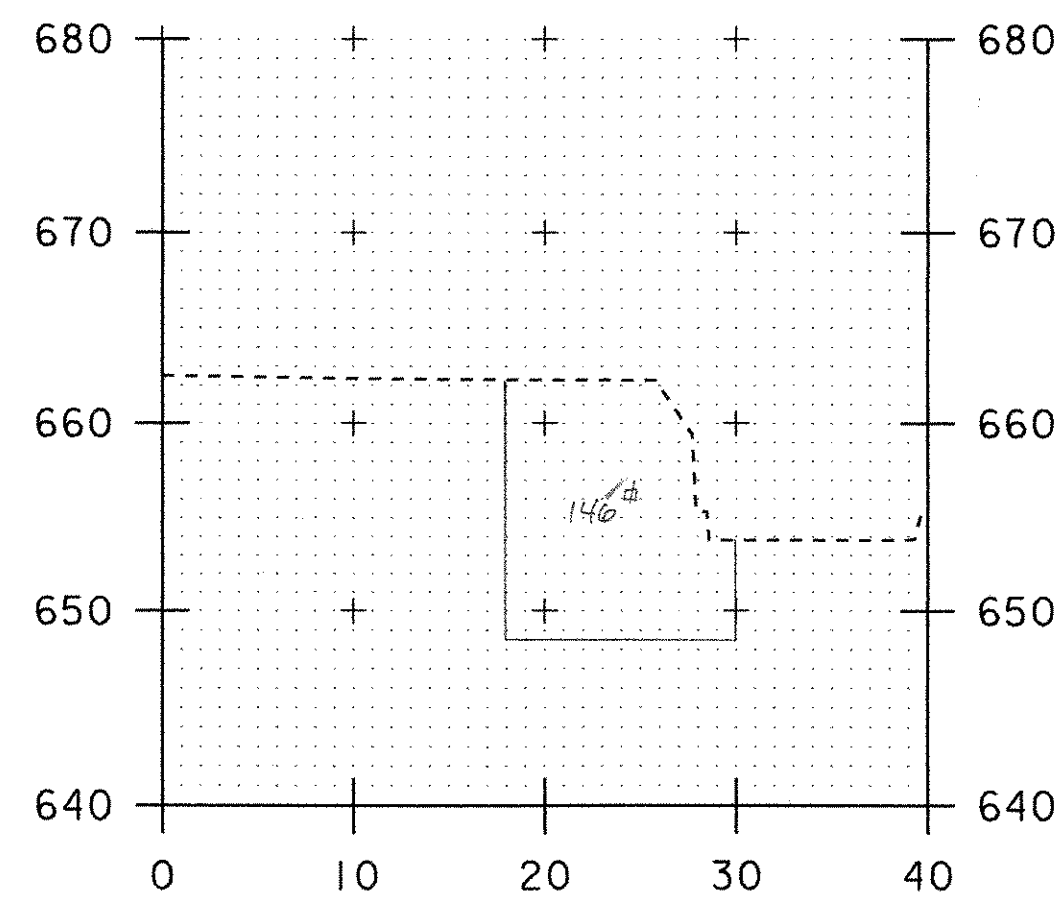


Item 208 Cofferdam Excavation

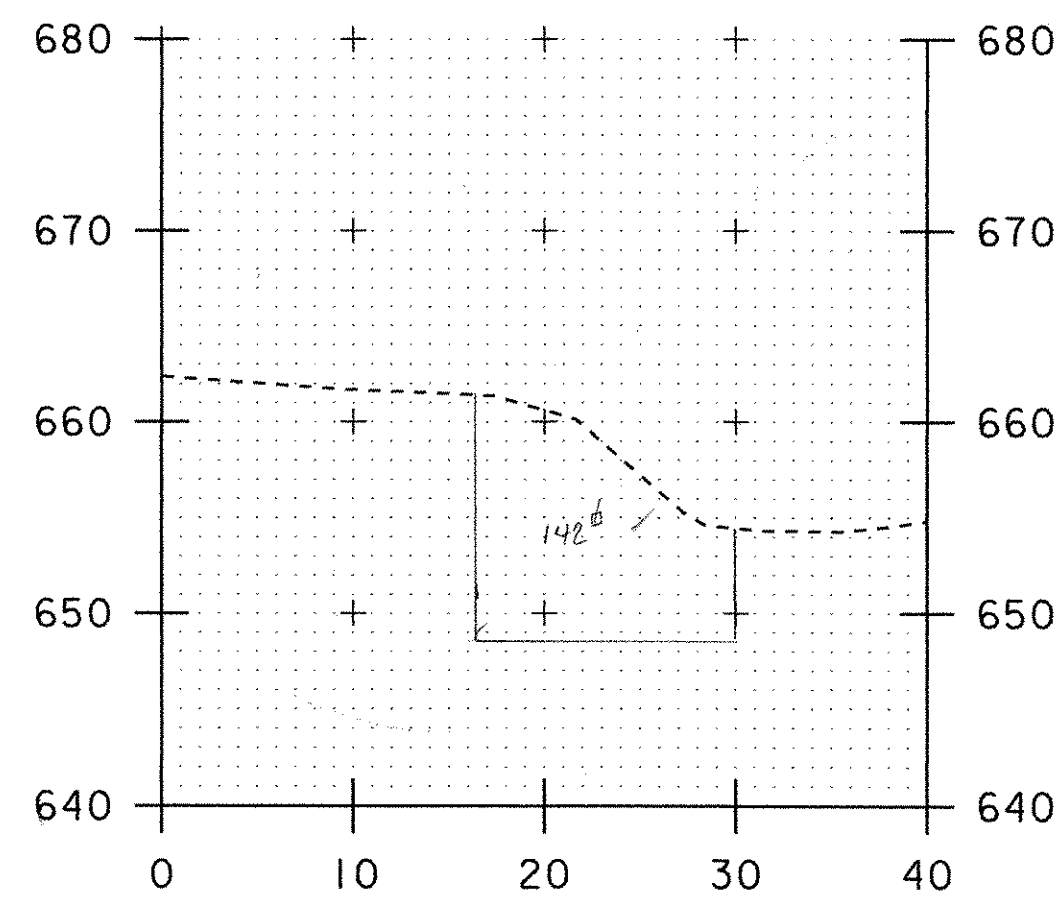
Abutment	Area	Dist	Vol.	
0+29	0	2.5	6.57 cy	
+31.5	142	9.5	60.67	
+41	204	1	6.44	ed 7/20 11-14-06
+42	144	12	54.22	11-14-06
+54	140	10	52.96	
+64	146	13	65.00	
+77	124	2	4.59	
+79	0			
				250.69 cy Earth & Rock
				259.54 cy 11-14-06
Abutment 2	0			
0+33	0	3	8.00	
+36	144	11.5	63.04	
+47.5 BK	192			
+47.5 AH	166	10.5	59.69	59.50 ed 7/20 11-14-06
+58	140	12	62.89	
+70 BK	145			
+70 AH	170	10.5	52.50	
+80.5	100	2.5	4.63	
+83	0			
				250.75 cy Earth & Rock
				250.54 cy 11-14-06
				259.54 cy
				259.54 cy



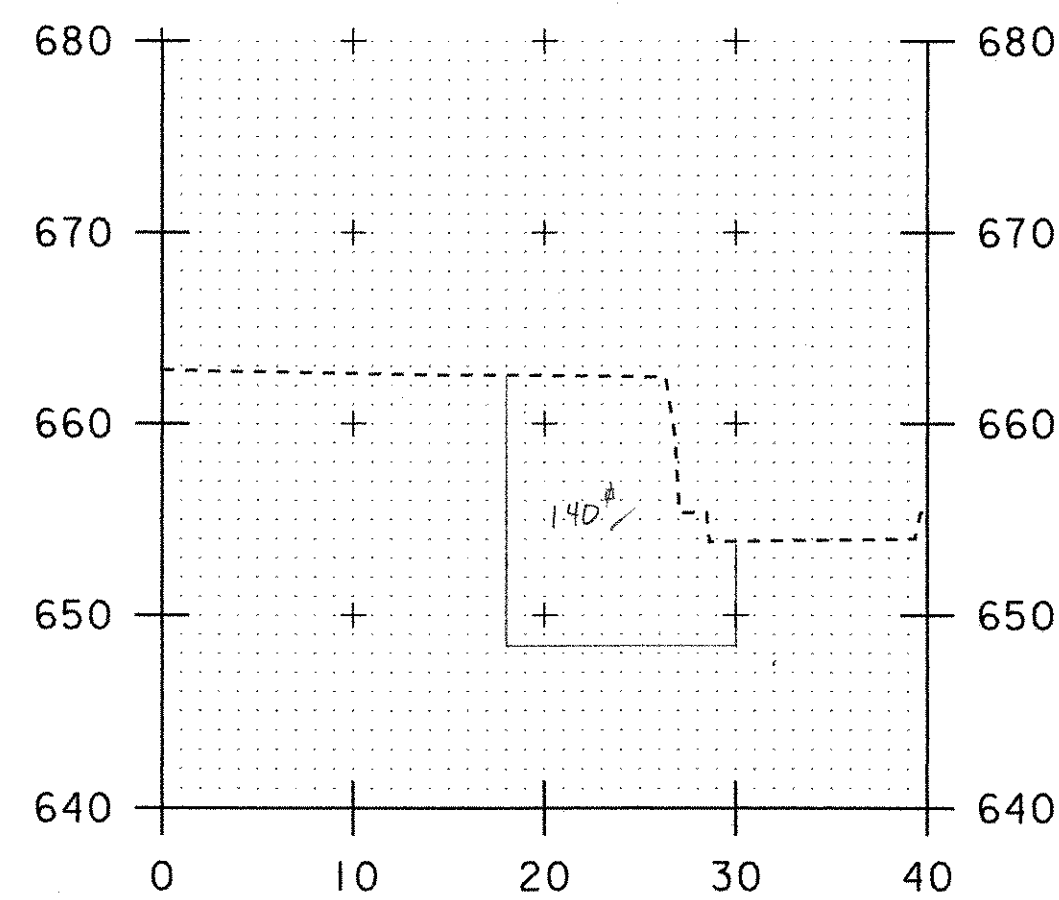
0+41



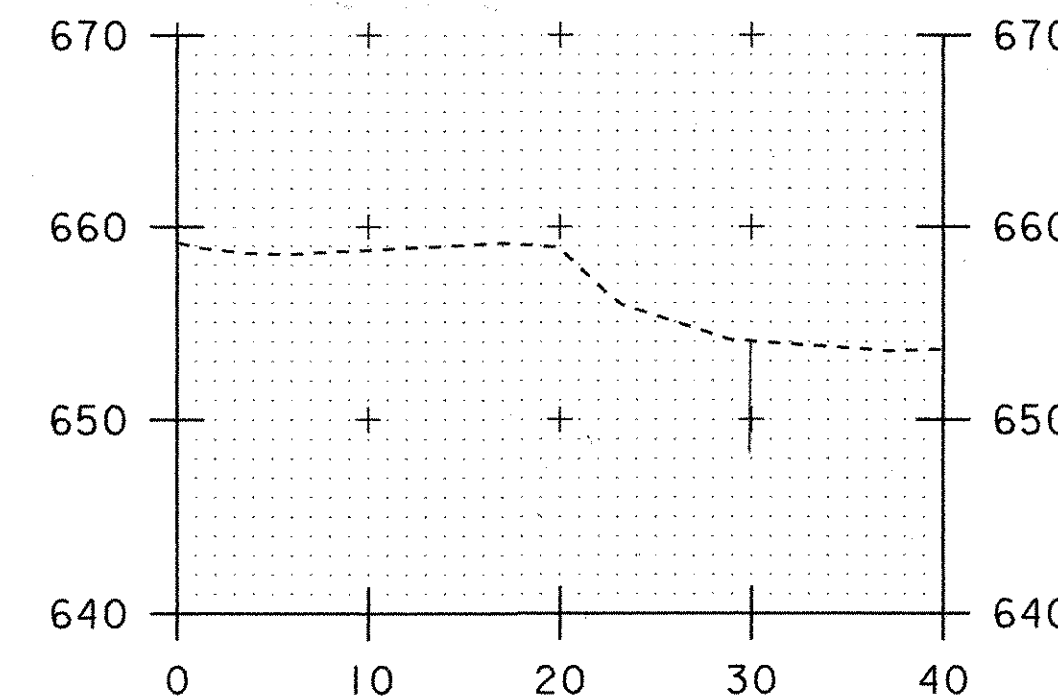
0+64



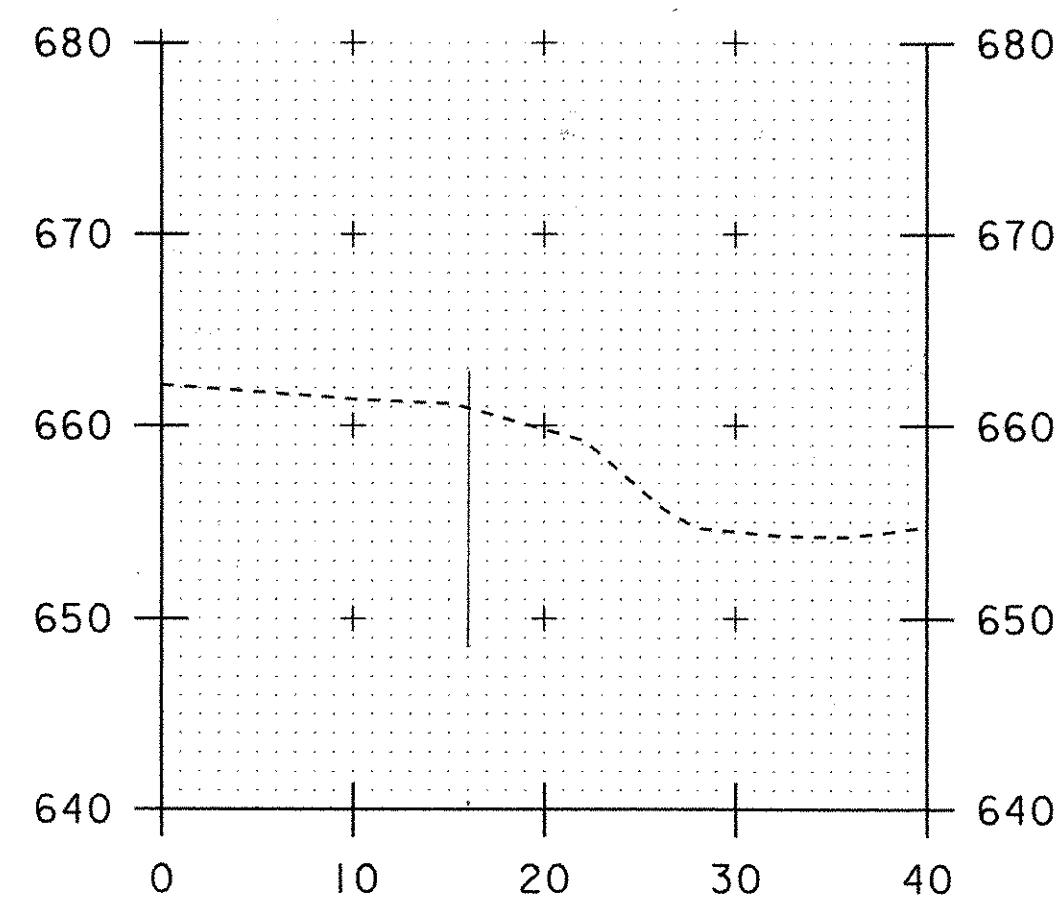
0+31.5



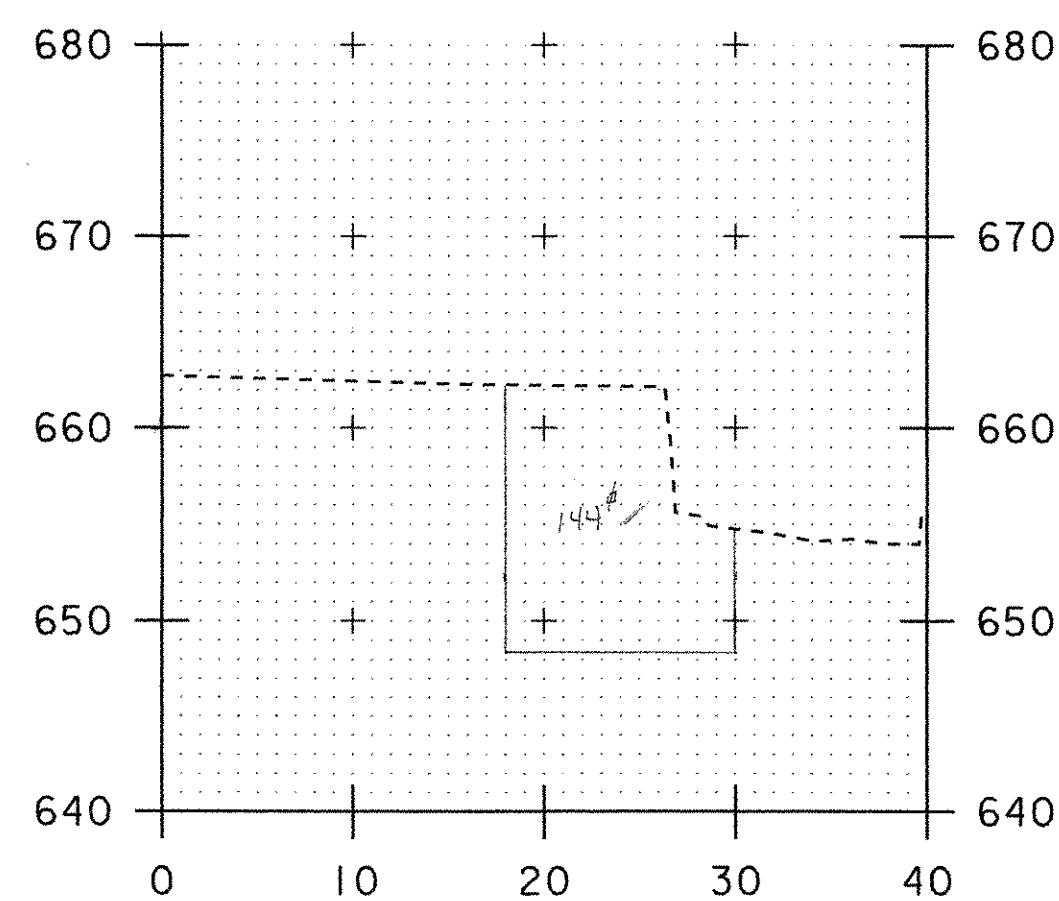
0+54



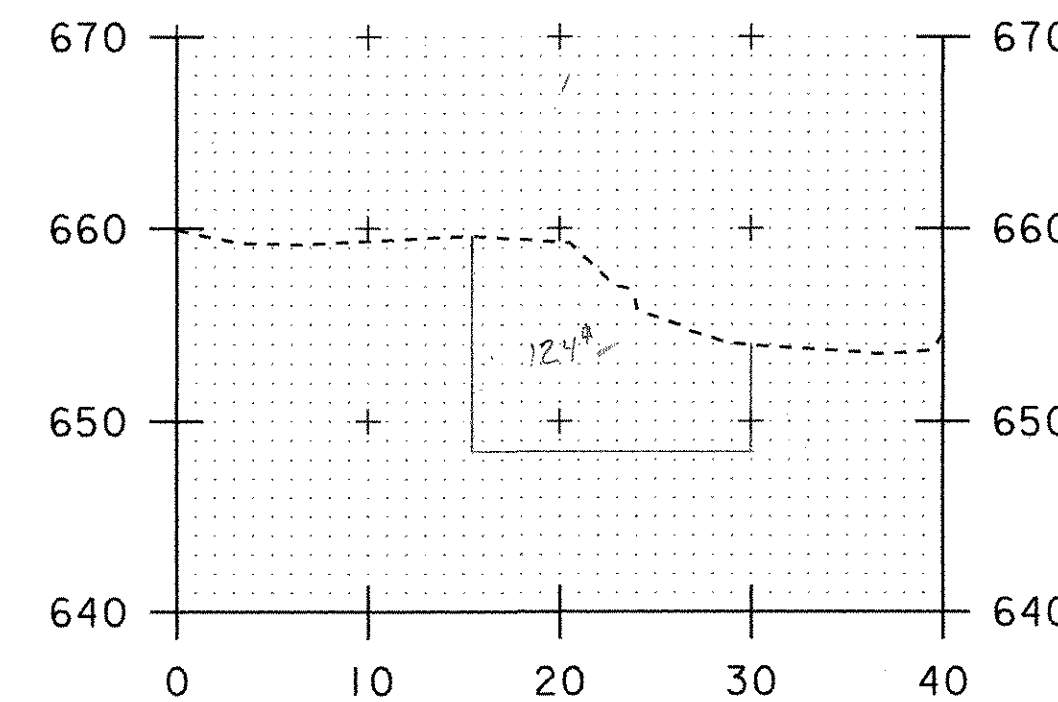
0+79



0+29



0+42



0+77

BK #1 P.

250.7
250.8
501.5
- 2.5 rock
499.0

CHANNEL CROSS SECTIONS

PROJECT NAME:	FAIRFIELD
PROJECT NUMBER:	AC STP ST 0298 (6)
FILE NAME: str5/01c182/sc182bdr.dgn	PLOT DATE: 09-AUG-2005
PROJECT LEADER: C. Keller	DRAWN BY: G. Shangraw
DESIGNED BY: J. Reed	CHECKED BY:
	SHEET 044 OF