

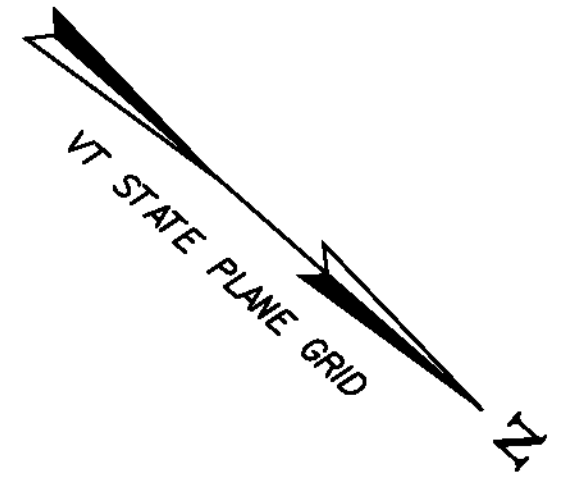
RELOCATE MAILBOX, SINGLE SUPPORT  
STA. 3+10, LT

DURABLE 4 INCH WHITE LINE  
(ALL LINES WILL INCLUDE EDGE LINE BREAKS AND  
RADI FOR SIDE ROADS)  
STA. 1+00 TO 3+59, SOLID LT & RT

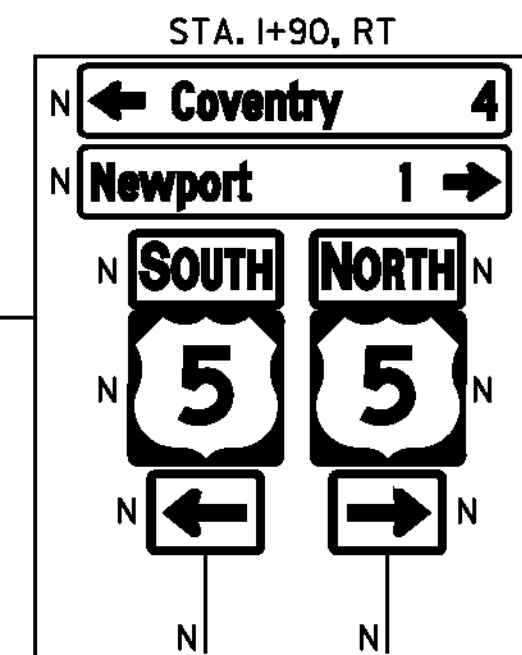
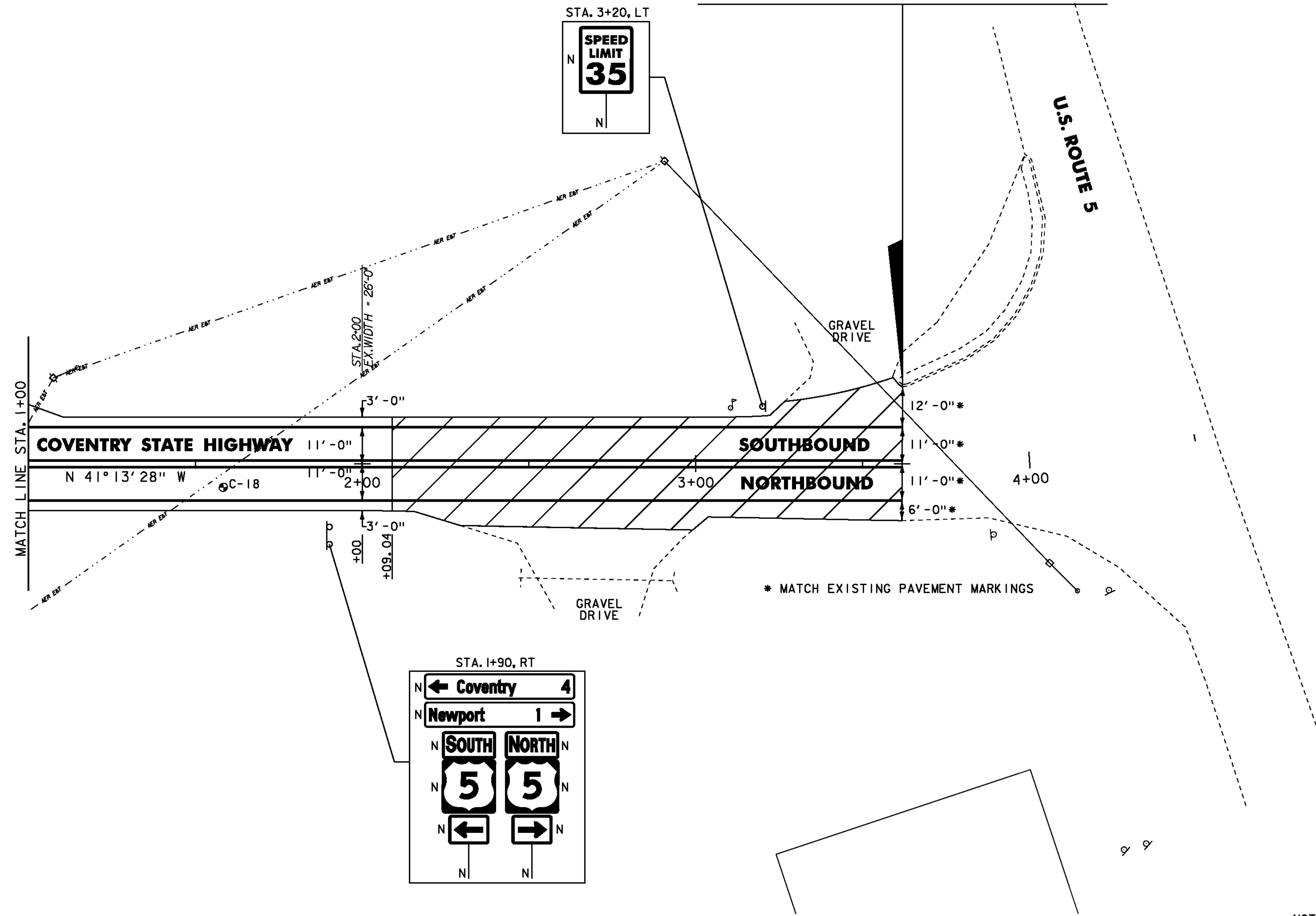
TEMPORARY 4 INCH WHITE LINE, PAINT  
(ALL LINES WILL INCLUDE EDGE LINE BREAKS AND  
RADI FOR SIDE ROADS)  
STA. 1+00 TO 3+59, SOLID LT & RT

DURABLE 4 INCH YELLOW LINE  
(ALL LINES WILL INCLUDE C BREAKS FOR SIDE ROADS)  
STA. 1+00 TO 3+59, SOLID LT & RT

TEMPORARY 4 INCH YELLOW LINE, PAINT  
(ALL LINES WILL INCLUDE C BREAKS FOR SIDE ROADS)  
STA. 1+00 TO 3+59, SOLID LT & RT



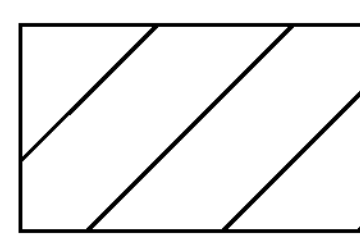
**END STP 2308(1) COVENTRY STATE HIGHWAY  
NEWPORT CITY STA. 3+59.04 = MM 0.068**



\* MATCH EXISTING PAVEMENT MARKINGS

- NOTES:
1. FOR LEGENDS, SEE SHEET 20
  2. ALL EXISTING SIGNS NOT SHOWN SHALL BE RETAINED.
  3. FOR PAVEMENT CORE AND TEST PIT DATA SEE SHEET 50.
  4. SEE QUANTITY SHEETS FOR DURABLE PAVEMENT MARKING OPTIONS.

NOT TO SCALE

 COLD PLANING/RECLAMATION TRANSITION AREA  
SEE DETAIL ON SHEET 8.

PAVEMENT CORE DATA			
CORE#	DEPTH (FT.)	PCC	COMMENTS
C-18	4"	NO	BOTTOM 1" STRIPPED



**PROJECT LAYOUT SHEET #13**

PROJECT NAME: COVENTRY-NEWPORT CITY	
PROJECT NUMBER: STP 2308(1)	
FILE NAME: p01c052.dgn	PLOT DATE: 18-MAY-2012
PROJECT LEADER: JLL	DRAWN BY: STANTEC
DESIGNED BY: STANTEC	CHECKED BY: STANTEC
IPARM FILE: p01c052113.i	SHEET 32 OF 107