

C 9301 1993

DIRECTION	ACTUAL GRID POINTS		PROJECT SPECIFIC COORDINATE POINTS
	METRIC	ENGLISH	
N	268565.586 m	881118.927 ft	880468.406 ft
E	521713.407 m	1711654.737 ft	1713037.647 ft
Z	209.510 m	687.37 ft	687.37 ft

GENERAL LOCATION, COVENTRY, VT.

TO REACH FROM THE INTERSECTION OF U.S. ROUTE 5 AND AIRPORT ROAD (SA 2) IN COVENTRY GO SOUTH ALONG AIRPORT ROAD FOR 0.8 MI (1.3 KM) TO A GRAVEL ROAD EAST AND THE MARK IN THE SOUTHEAST QUADRANT OF THE INTERSECTION. THE STATION IS SET INTO THE TOP OF A 30 CM CONCRETE MONUMENT, 1.5M (4.9 FT) DEEP, FLUSH WITH THE GROUND, AND 2 FT (0.6 M) LOWER THAN AIRPORT ROAD. IT IS 42.2 FT (12.9 M) EAST NORTHEAST OF THE CENTERLINE OF AIRPORT ROAD, 39.0 FT (11.9 M) SOUTH OF THE CENTERLINE OF THE GRAVEL ROAD, 66.0 FT (20.1 M) SOUTH SOUTHEAST OF POLE NUMBER 9-1/9/60, 23.7 FT (7.2 M) SOUTH OF A SIGN (LLL 24,000 POUNDS), AND 1 FT (0.3 M) WEST OF A FIBERGLASS WITNESS POST.

DESCRIPTIONS PROVIDED BY VERMONT AGENCY OF TRANSPORTATION GEODETIC SURVEY UNIT.

PORT 2 1986

DIRECTION	ACTUAL GRID POINTS		PROJECT SPECIFIC COORDINATE POINTS
	METRIC	ENGLISH	
N	265701.314 m	871721.729 ft	871721.728 ft
E	521545.608 m	1711104.216 ft	1711104.216 ft
Z	281.338 m	923.02 ft	923.02 ft

GENERAL LOCATION, AIRPORT, COVENTRY, VT

TO REACH THE STATION FROM THE JUNCTION OF U.S. HIGHWAY 5 SOUTH AND STATE HIGHWAY 105 WEST IN SOUTHWEST NEWPORT, GO SOUTHERLY ON HIGHWAY 5 FOR 1.4 KM (0.9 MI) TO A PAVED ROAD LEFT, AIRPORT ROAD. TURN LEFT AND GO EAST AND SOUTH FOR 4.3 KM (2.7 MI) TO A PAVED DRIVE RIGHT, ENTRANCE TO AIRPORT. TURN RIGHT AND GO WEST ON THE DRIVE FOR 0.2 KM (0.1 MI) TO THE AIRPORT TERMINAL ON THE LEFT AND A GATE. PASS THROUGH THE GATE AND CONTINUE WEST ACROSS APRON AND THE RAMP TO THE RUNWAY. (TO REACH THE AZIMUTH MARK TURN LEFT AND GO SOUTH ON THE RUNWAY FOR 0.5 KM (0.3 MI) TO THE END OF THE RUNWAY AND THE MARK ON THE LEFT.) TURN RIGHT AND GO NORTH FOR 0.3 KM (0.2 MI) TO THE WINDSOCK AND THE STATION ON THE RIGHT.

THE STATION IS A STANDARD NGS DISK STAMPED PORT 2 1986, SET INTO THE TOP OF A ROUND CONCRETE MONUMENT 30 CM IN DIAMETER RECESSED 3 CM BELOW GROUND. LOCATED 4.11 METERS (13.5 FT) NORTH NORTHWEST FROM THE WINDSOCK AND 0.76 METERS (2.5 FT) SOUTHWEST FROM THE WITNESS POST.

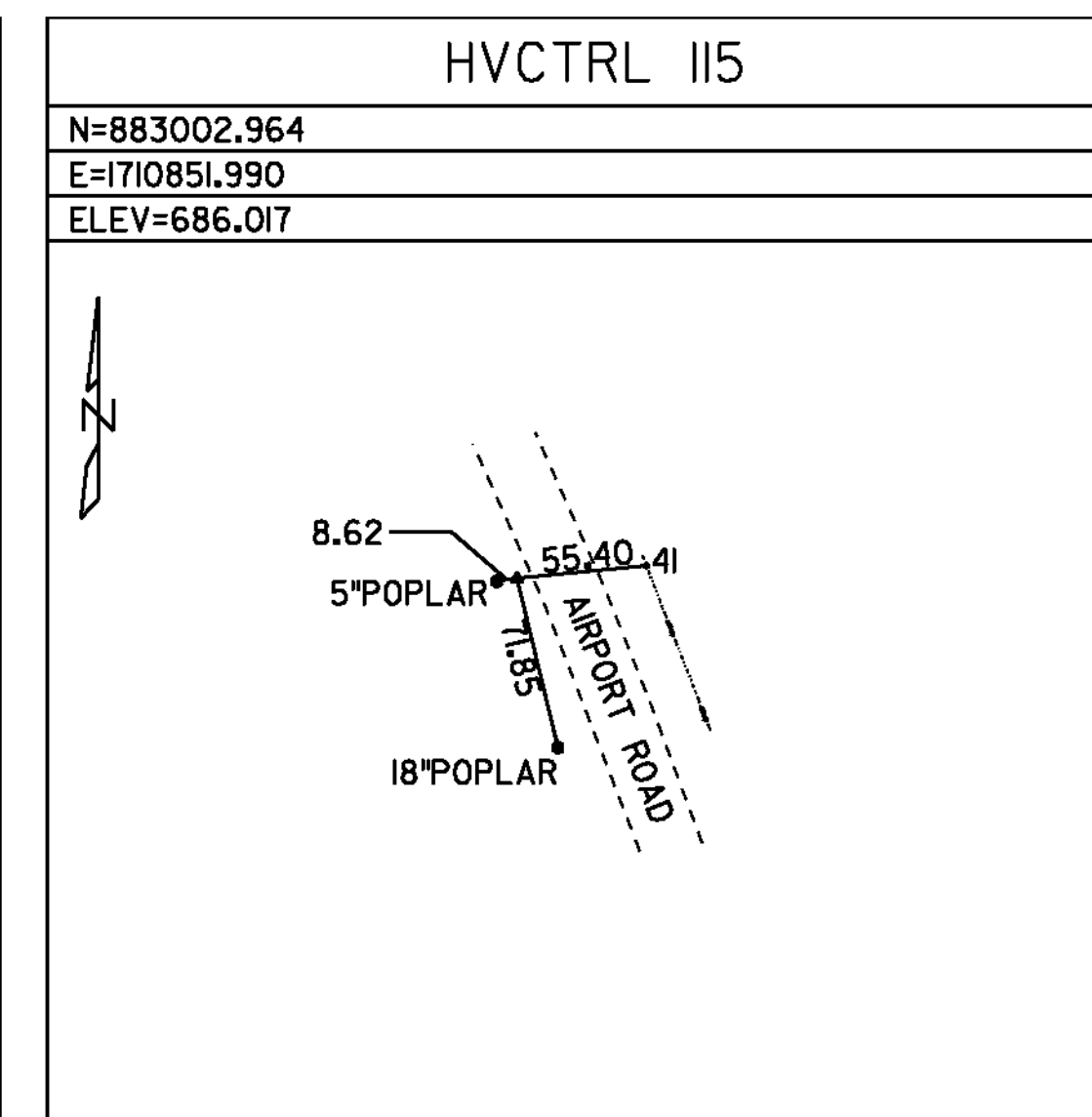
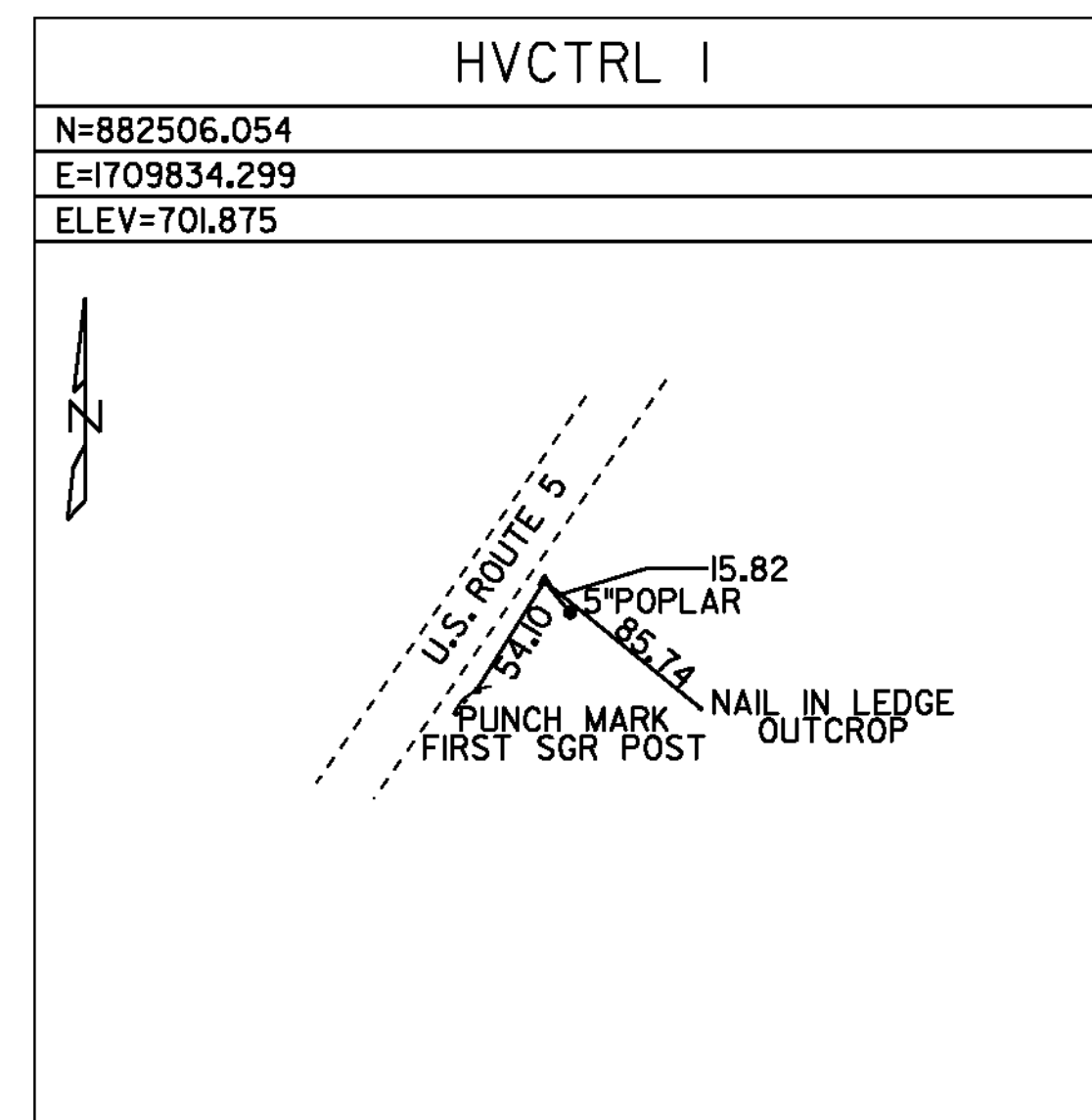
W 50 1978

DIRECTION	ACTUAL GRID POINTS		PROJECT SPECIFIC COORDINATE POINTS
	METRIC	ENGLISH	
N	269336.410 m	883647.871 ft	883638.674 ft
E	521447.631 m	1710782.769 ft	1710548.396 ft
Z	213.095 m	699.13 ft	699.13 ft

GENERAL LOCATION, COVENTRY, VT

TO REACH FROM THE INTERSECTION OF US ROUTE 5 SOUTH AND VT ROUTE 105 WEST IN NEWPORT, GO SOUTH ALONG US ROUTE 5 FOR 0.8 MI (1.3 KM) TO THE SITE OF THE MARK ON THE RIGHT. IT IS ABOUT 47.0 M (154.2 FT) NORTHEAST OF THE INTERSECTION OF US ROUTE 5 AND AIRPORT ROAD. TO REACH FROM THE INTERSECTION OF US ROUTE 5 AND VT ROUTE 14 IN COVENTRY, GO NORTH ALONG US ROUTE 5 FOR 4.3 MI (6.9 KM) TO THE SITE OF THE MARK ON THE LEFT.

THE MARK IS SET IN THE TOP OF A MASSIVE ROCK OUTCROP. IT IS 5.3 M (17.4 FT) NORTHWEST OF AND ABOUT 1.0 M (3.3 FT) HIGHER THAN THE CENTERLINE OF US ROUTE 5, 26.0 M (85.3 FT) WEST OF THE CENTERLINE OF A GRAVEL DRIVE LEADING TO THE NORTHEAST END OF THE NEVTEC BUILDING, 0.6 M (2.0 FT) NORTHWEST OF THE LEDGE FACE, 0.5 M (1.6 FT) EAST OF A 15 CM (6 INCHES) POPLAR, AND 0.8 M (2.6 FT) NORTHWEST OF A FIBERGLASS WITNESS POST.



NOT TO SCALE

**PROJECT
TIE
SHEET**

PROJECT NAME: COVENTRY-NEWPORT CITY
PROJECT NUMBER: STP 2308(I)

FILE NAME: p01c052.dgn
PROJECT LEADER: JLL
DESIGNED BY: STANTEC
IPARM FILE: p01c052ct.i

PLOT DATE: 18-MAY-2012
DRAWN BY: STANTEC
CHECKED BY: STANTEC
SHEET 6 OF 107

