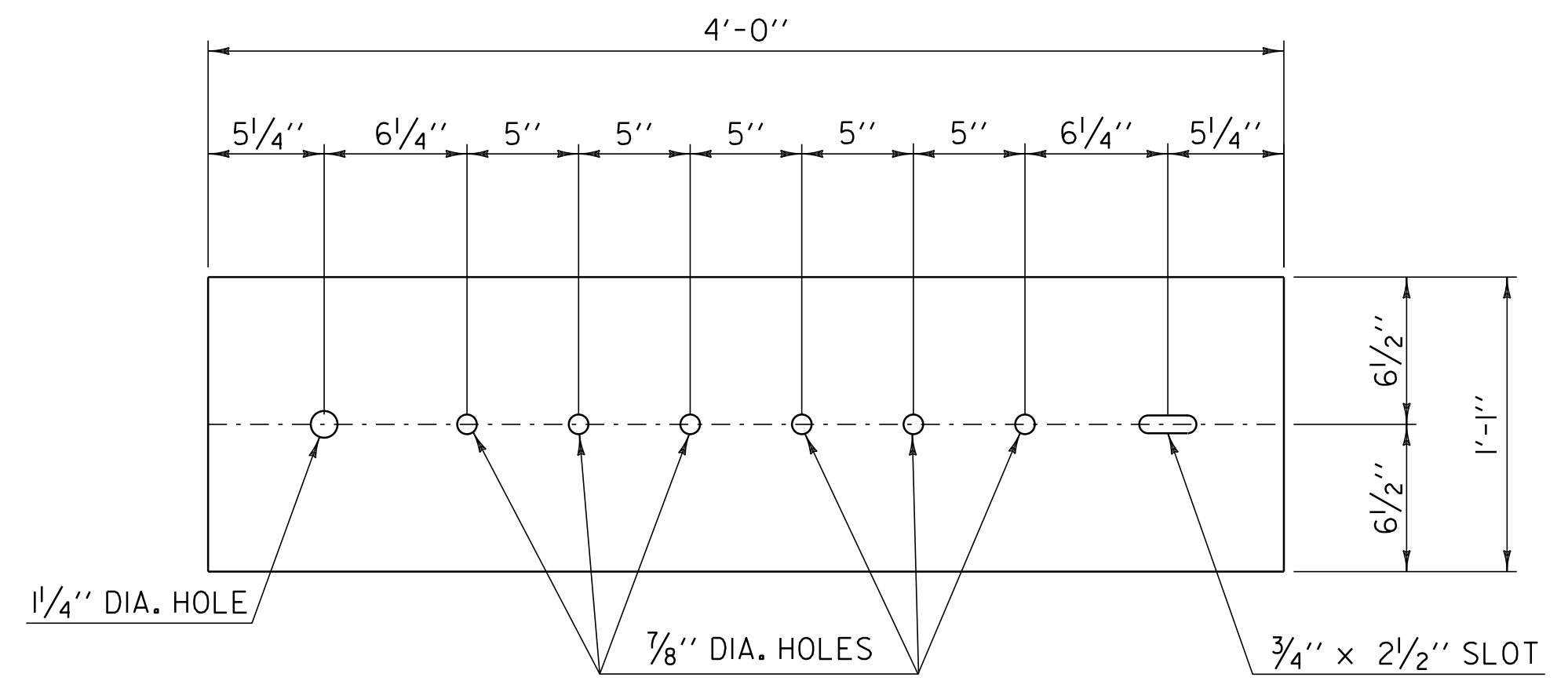
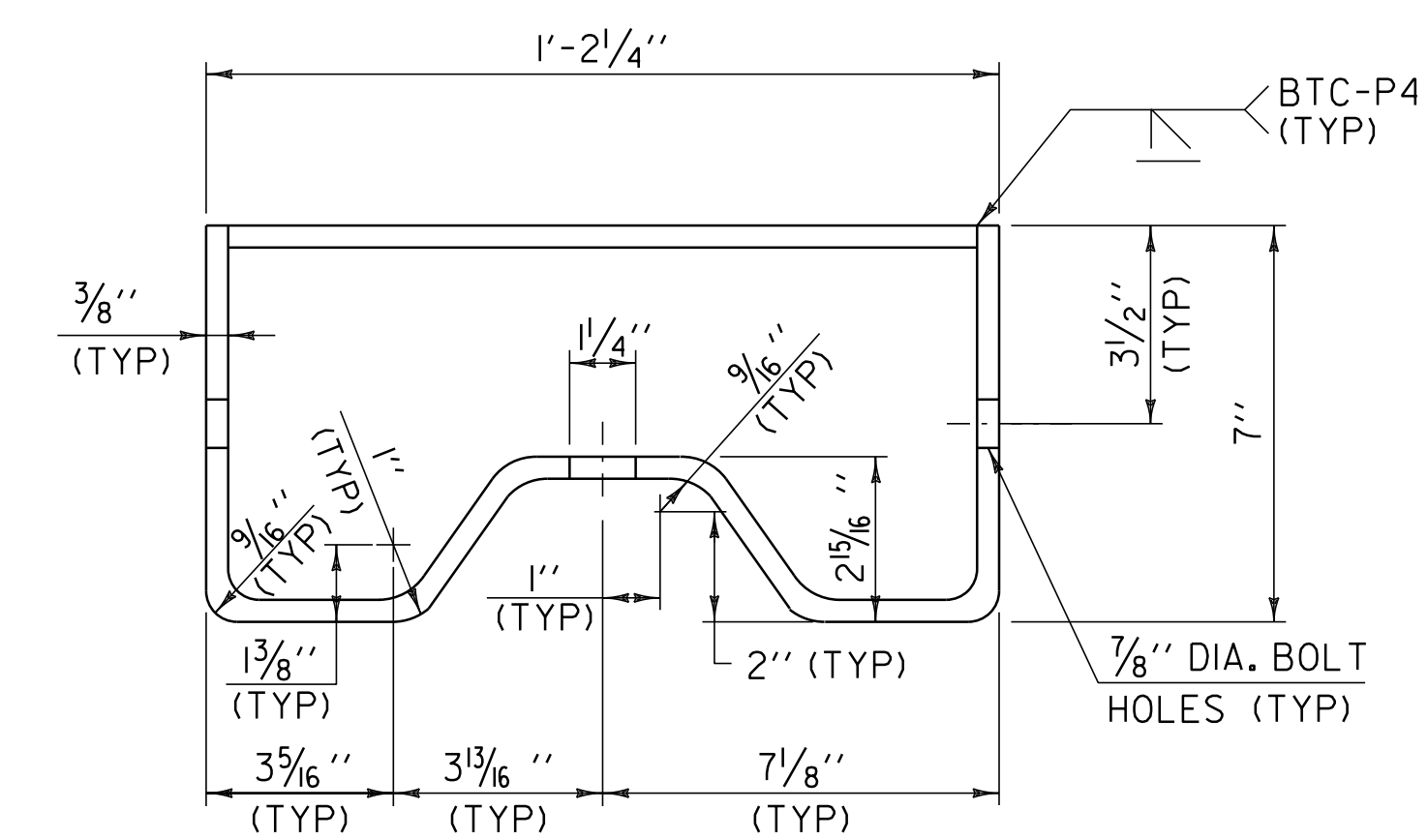


PLAN
ELEVATION
CONNECTION DETAILS AT POST #1

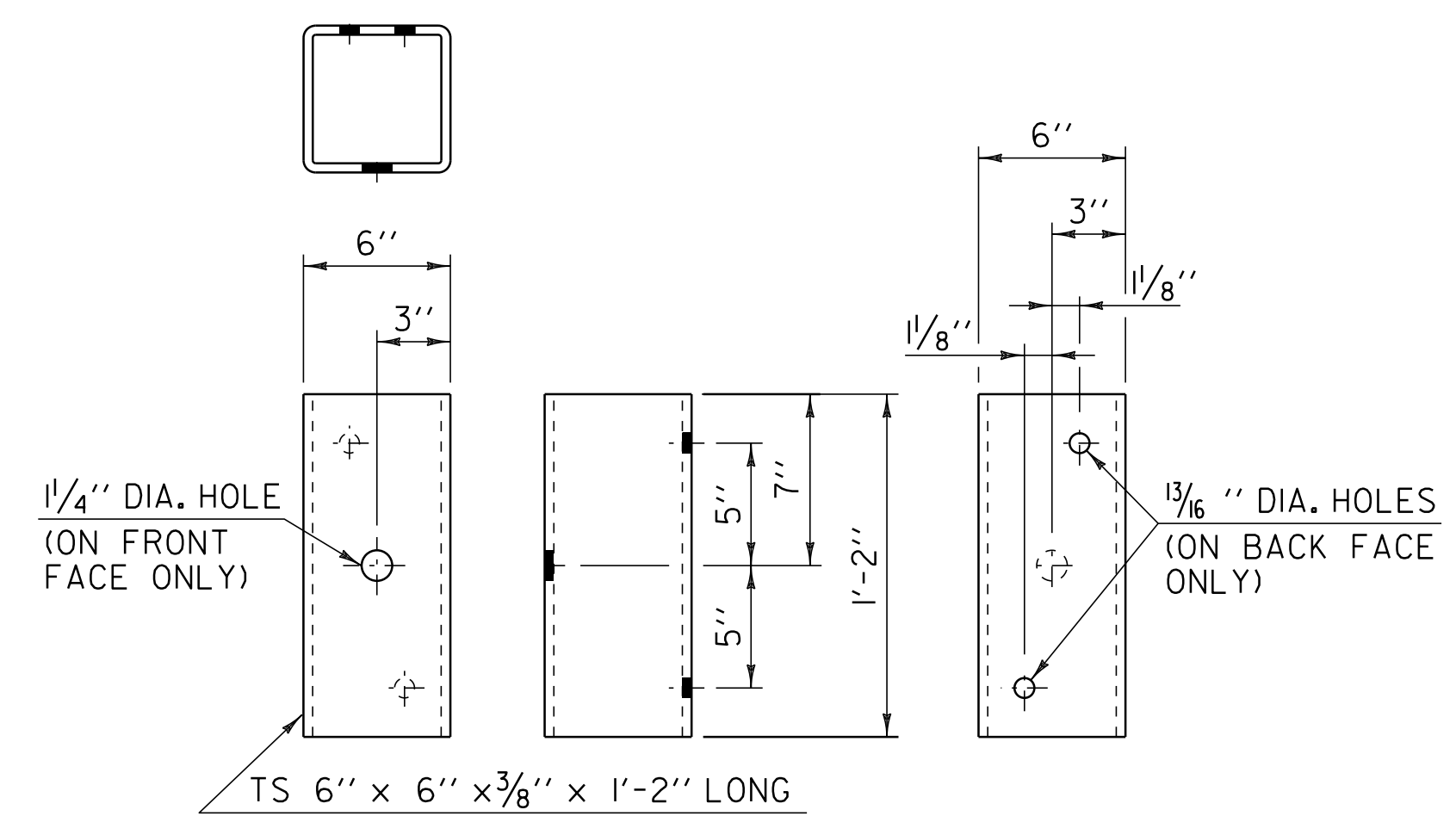


ANCHORAGE PLATE DETAIL

- NOTES**
1. REFER TO STANDARD G-1 FOR ADDITIONAL RAIL DETAILS.
 2. ALL POSTS FOR HEAVY DUTY STEEL BEAM GUARDRAIL SHALL BE STEEL IN ACCORDANCE WITH SECTION 728 "GUARDRAIL, GUIDE POSTS AND BARRIERS" UNLESS OTHERWISE SPECIFIED IN THE CONTRACT.
 3. APPROACH RAIL SPLICES SHALL LAP IN DIRECTION OF TRAFFIC FLOW.
 4. ANCHORAGE CONNECTOR AND ANCHORAGE PLATE SHALL BE AASHTO M 270, GRADE 250 GALVANIZED TO AASHTO M III AFTER FABRICATION.
 5. ALL BOLTS, NUTS AND WASHERS SHALL BE AASHTO M 164 GALVANIZED TO AASHTO M 232 AFTER FABRICATION.
 6. STRUCTURAL TUBING OFFSET BLOCK SHALL BE AASHTO M 183 GALVANIZED TO AASHTO M III AFTER FABRICATION.
 7. APPROACH RAILING SHALL BE HEAVY DUTY STEEL BEAM FOR 50'-0" FROM THE CL OF POST #1 FOR TYPE I AND 12'-6" FROM THE CL OF POST #1 FOR TYPE II.
 8. ALLOWABLE DIMENSIONAL TOLERANCE FOR BENT SECTIONS IS $\pm 1/16$ ".
 9. THE UNIT PRICE BID FOR GUARDRAIL APPROACH SECTION, GALVANIZED TYPE I SHALL INCLUDE ANCHORAGE CONNECTOR, ANCHORAGE PLATE, HEAVY DUTY STEEL BEAM GUARDRAIL, POSTS, OFFSET BLOCKS, BLOCKING, BOLTS, AND ALL NECESSARY HARDWARE.



ANCHORAGE CONNECTOR DETAIL
(SEE NOTE 8)



STRUCTURAL TUBING OFFSET BLOCK DETAILS
(OCCURS AT POST #1 WHEN USING APPROACH RAIL UTILIZING STEEL POSTS)

NOT TO SCALE

| | | |
|---|--------------------------------|---------------------|
| GUARDRAIL APPROACH SECTION DETAIL SHEET #2 | PROJECT NAME: ARLINGTON-DORSET | PLOT DATE: \$DATE\$ |
| | PROJECT NUMBER: STP 2625(1) | DRAWN BY: C.A.K. |
| | FILE NAME: p06c218.dgn | CHECKED BY: M.J.L. |
| | PROJECT LEADER: D.E.G. | SHEET 137 OF 143 |
| | DESIGNED BY: D.W.E. | |
| | IPARM FILE: p06c218bd2.i | |