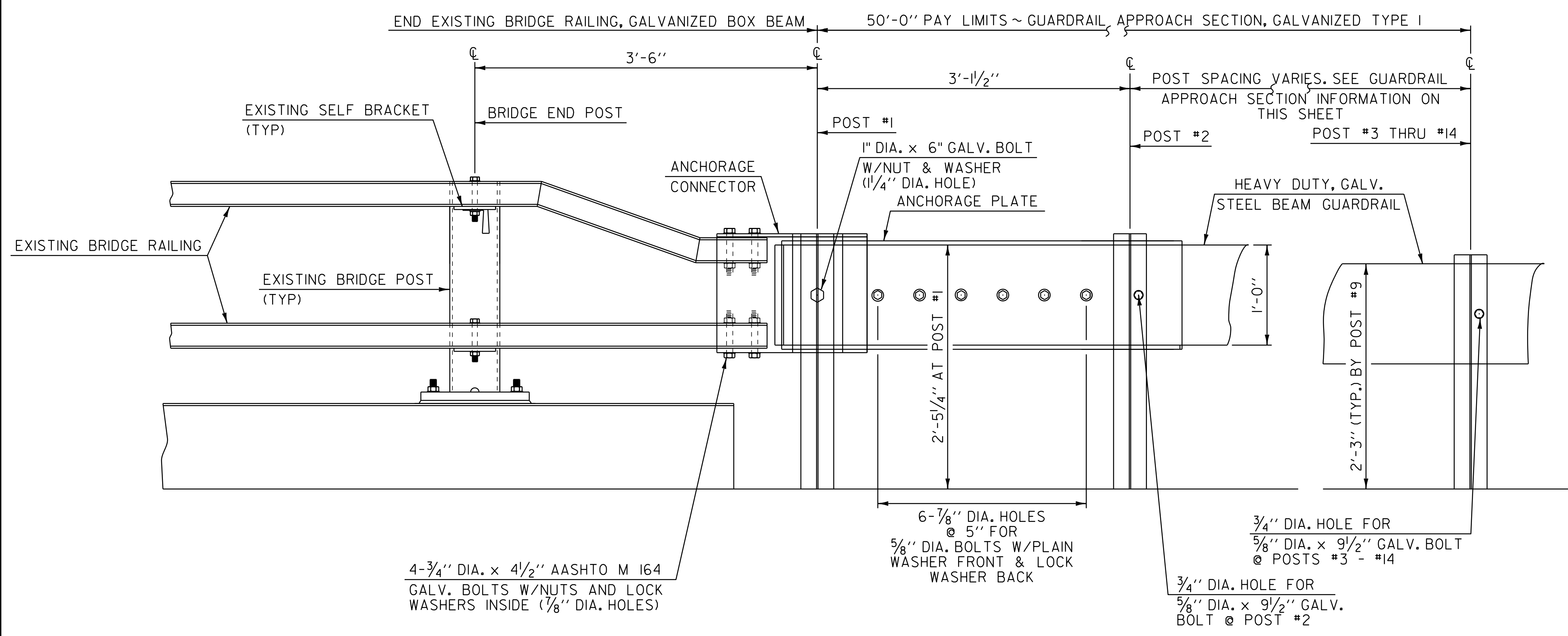


PLAN

GUARDRAIL APPROACH SECTION, GALVANIZED TYPE I

| POST NO. | SPACING |
|----------|-----------|
| 1 | 3'-1 1/2" |
| 2 | 3'-1 1/2" |
| 3 | 3'-1 1/2" |
| 4 | 3'-1 1/2" |
| 5 | 3'-1 1/2" |
| 6 | 3'-1 1/2" |
| 7 | 3'-1 1/2" |
| 8 | 3'-1 1/2" |
| 9 | 3'-1 1/2" |
| 10 | 4'-2" |
| 11 | 4'-2" |
| 12 | 4'-2" |
| 13 | 6'-3" |
| 14 | 6'-3" |

50'-0" PAY LIMITS GUARDRAIL APPROACH SECTION, GALVANIZED TYPE I



ELEVATION GUARDRAIL APPROACH SECTION DETAIL

NOT TO SCALE

| | | |
|---|--------------------------------|---------------------|
| GUARDRAIL APPROACH SECTION DETAIL SHEET #1 | PROJECT NAME: ARLINGTON-DORSET | |
| | PROJECT NUMBER: STP 2625(1) | |
| | FILE NAME: p06c218.dgn | PLOT DATE: \$DATE\$ |
| | PROJECT LEADER: D.E.G. | DRAWN BY: C.A.K. |
| | DESIGNED BY: D.W.E. | CHECKED BY: M.J.L. |
| | IPARM FILE: p06c218bdl.i | SHEET 136 OF 143 |