

646.406 DURABLE 4 INCH WHITE LINE, RECESSED POLYUREA  
 (ALL LINES WILL INCLUDE EDGE LINE BREAKS AND RADIUS FOR TOWN HIGHWAYS)  
 ARLINGTON:  
 STA 308+00.00 - STA 322+50.00 LT & RT

646.602 TEMPORARY 4 INCH WHITE LINE, PAINT  
 (ALL LINES WILL INCLUDE EDGE LINE BREAKS AND RADIUS FOR TOWN HIGHWAYS)  
 ARLINGTON:  
 STA 308+00.00 - STA 322+50.00 LT & RT

604.412, 604.415, 604.418 REHAB. DROP INLETS, CATCH BASINS, OR MANHOLES, CLASS I, II, III  
 ARLINGTON:  
 STA 316+50.0 LT ✓ CLASS II  
 STA 320+00.0 LT ✓ CLASS I

646.416 DURABLE 4 INCH YELLOW LINE, RECESSED POLYUREA  
 (ALL LINES WILL INCLUDE C/L BREAKS FOR TOWN HIGHWAYS) S=SOLID, D=DASHED  
 ARLINGTON:  
 STA 308+00.00 - STA 322+50.00 LT ☉ RT S - S  
 STA 317+06.40 DOUBLE SOLID RT, TH-24

646.612 TEMPORARY 4 INCH YELLOW LINE, PAINT  
 (ALL LINES WILL INCLUDE C/L BREAKS FOR TOWN HIGHWAYS) S=SOLID, D=DASHED  
 ARLINGTON:  
 STA 308+00.00 - STA 322+50.00 LT ☉ RT S - S  
 STA 317+06.40 DOUBLE SOLID RT, TH-24

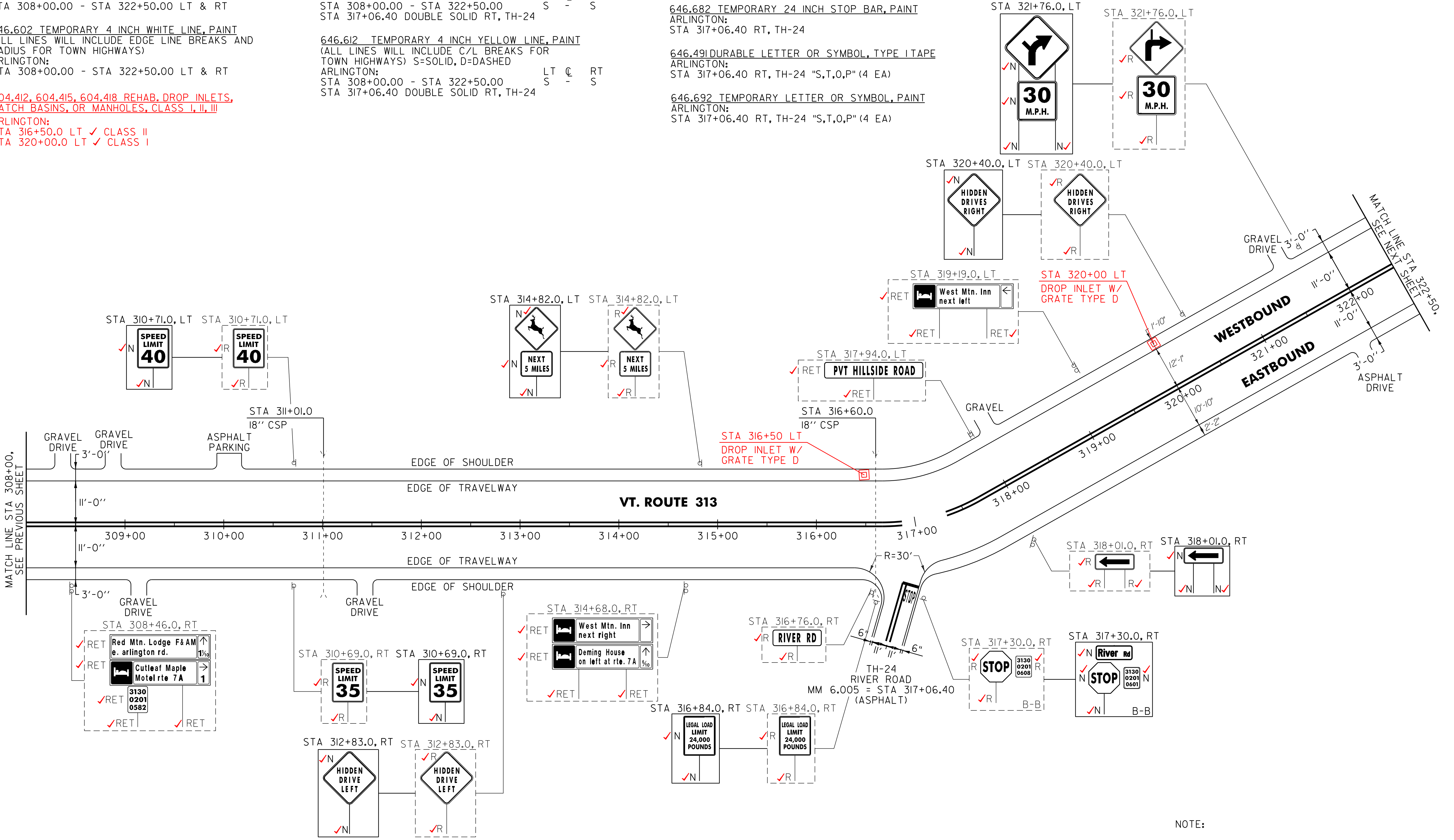
646.481 DURABLE 24 INCH STOP BAR, TYPE I TAPE  
 ARLINGTON:  
 STA 317+06.40 RT, TH-24

646.682 TEMPORARY 24 INCH STOP BAR, PAINT  
 ARLINGTON:  
 STA 317+06.40 RT, TH-24

646.491 DURABLE LETTER OR SYMBOL, TYPE I TAPE  
 ARLINGTON:  
 STA 317+06.40 RT, TH-24 "S,T,O,P" (4 EA)

646.692 TEMPORARY LETTER OR SYMBOL, PAINT  
 ARLINGTON:  
 STA 317+06.40 RT, TH-24 "S,T,O,P" (4 EA)

675.50 REMOVING SIGNS AS SHOWN - 13 ✓



NOTE:  
 I. PAVING LIMIT ON ALL TOWN HIGHWAYS SHALL BE MEASURED 25 FT BACK FROM VT. ROUTE 313 EDGE OF SHOULDER UNLESS DENOTED OTHERWISE ON THE PLANS OR AS DIRECTED BY THE RESIDENT ENGINEER.

**SIGN LEGEND**  
 R = REMOVE  
 S = SALVAGE  
 N = NEW  
 RET = RETAIN  
 B-B = BACK TO BACK  
 EXISTING = - - - - -  
 NEW = \_\_\_\_\_

**NOT TO SCALE**

<b>PROJECT LAYOUT SHEET #14</b>	PROJECT NAME: ARLINGTON	PLOT DATE: 20-FEB-2013 16:40
	PROJECT NUMBER: STP 2334(1)	DRAWN BY: C.A.K.
	FILE NAME: OIC042.dgn	CHECKED BY: D.W.E.
	PROJECT LEADER: D.E.G. DESIGNED BY: M.J.M. IPARM FILE: p0lc042i14.i	SHEET 30 OF 143