

646.406 DURABLE 4 INCH BROWN RECESSED POLYUREA
 (ALL LINES WILL INCLUDE EDGE LINE BREAKS AND
 RADIUS FOR TOWN HIGHWAYS)
 ARLINGTON:
 STA 151+00.00 - STA 165+00.00 LT & RT

646.602 TEMPORARY 4 INCH WHITE LINE, PAINT
 (ALL LINES WILL INCLUDE EDGE LINE BREAKS AND
 RADIUS FOR TOWN HIGHWAYS)
 ARLINGTON:
 STA 151+00.00 - STA 165+00.00 LT & RT

646.416 DURABLE 4 INCH BROWN RECESSED POLYUREA
 (ALL LINES WILL INCLUDE C/L BREAKS FOR
 TOWN HIGHWAYS) S=SOLID, D=DASHED
 ARLINGTON:
 STA 151+00.00 - STA 165+00.00 LT @ RT
 S - S

646.612 TEMPORARY 4 INCH YELLOW LINE, PAINT
 (ALL LINES WILL INCLUDE C/L BREAKS FOR
 TOWN HIGHWAYS) S=SOLID, D=DASHED
 ARLINGTON:
 STA 151+00.00 - STA 165+00.00 LT @ RT
 S - S

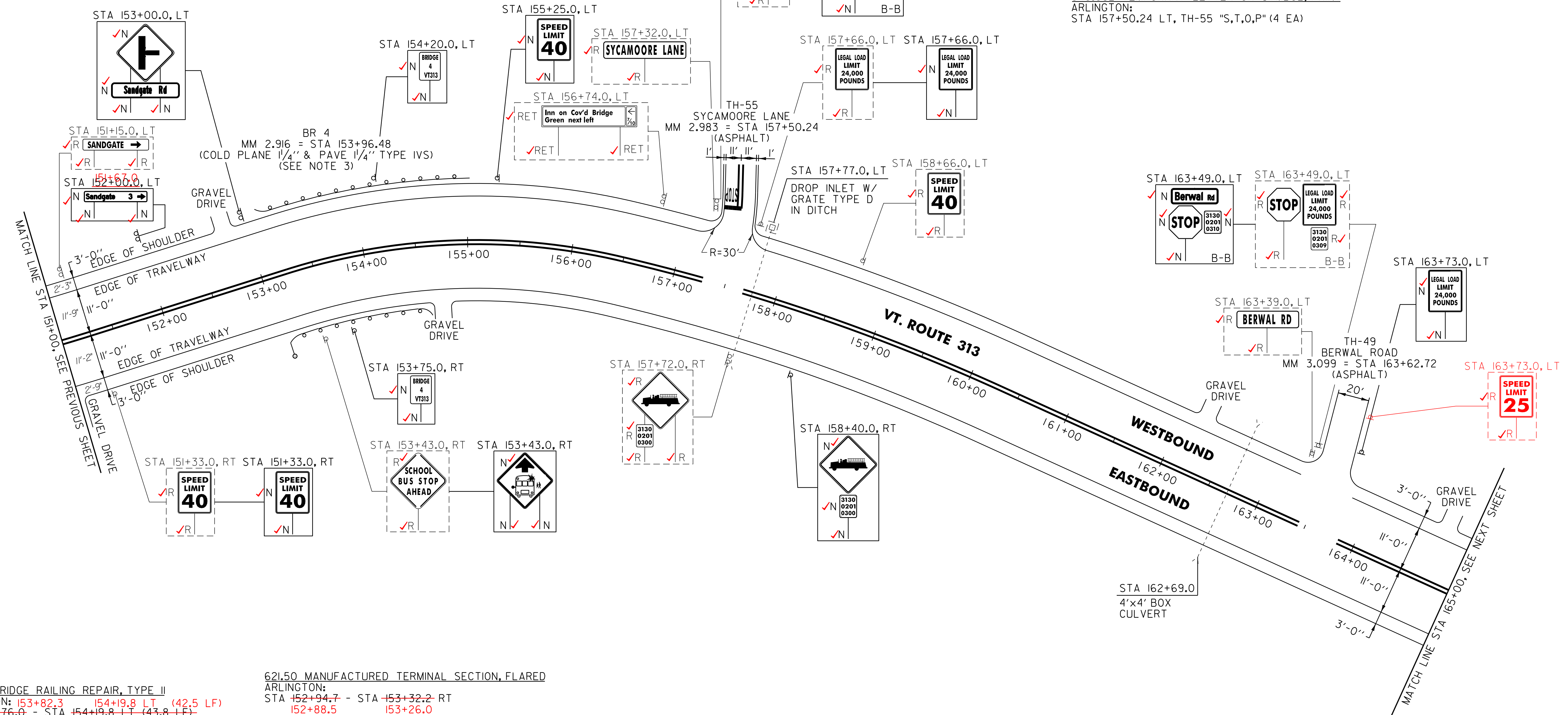
646.481 DURABLE 24 INCH STOP BAR, TYPE I TAPE
 ARLINGTON:
 STA 157+50.24 LT, TH-55

646.682 TEMPORARY 24 INCH STOP BAR, PAINT
 ARLINGTON:
 STA 157+50.24 LT, TH-55

646.491 DURABLE LETTER OR SYMBOL, TYPE I TAPE
 ARLINGTON:
 STA 157+50.24 LT, TH-55 "S,T,O,P" (4 EA)

646.692 TEMPORARY LETTER OR SYMBOL, PAINT
 ARLINGTON:
 STA 157+50.24 LT, TH-55 "S,T,O,P" (4 EA)

675.50 REMOVING SIGNS
 AS SHOWN - 13
 14 ✓



525.55 BRIDGE RAILING REPAIR, TYPE II
 ARLINGTON: 153+82.3 154+19.8 LT (42.5 LF)
 STA 153+76.0 - STA 154+19.8 LT (43.8 LF)
 STA 153+76.0 - STA 154+19.8 RT (43.8 LF) (42.5 LF)
 13.5

604.412, 604.415, 604.418 REHAB. DROP INLETS, CATCH
 BASINS, OR MANHOLES, CLASS I, II, III (SEE NOTE 2)
 ARLINGTON:
 STA 157+77.0 LT CLASS I

621.20 STEEL BEAM GUARDRAIL, GALVANIZED
 ARLINGTON: 153+17.8 153+69.8 (54.5 LF)
 STA 153+11.5 - STA 153+51.0 LF (39.5 LF)
 STA 153+32.2 - STA 153+44.7 RT (12.5 LF) 26.0-38.5
 STA 154+44.8 - STA 154+51.3 RT (6.5 LF) 26.0 53.0 (29.5 LF)
 STA 154+57.3 - STA 154+69.8 LT (12.5 LF)

621.21 HD STEEL BEAM GUARDRAIL, GALVANIZED
 ARLINGTON: 153+69.8 153+82.3 LT (17.5 LF)
 STA 153+51.0 - STA 153+76.0 LT (32.5 LF)
 STA 153+44.7 - STA 153+76.0 RT (41.3 LF) 38.5 (50.0 LF)
 STA 154+19.8 - STA 154+44.8 RT (32.5 LF) 13.5 26.0 (17.5 LF)
 STA 154+19.8 - STA 154+51.0 LT (41.3 LF) 57.3 (50.0 LF)

621.50 MANUFACTURED TERMINAL SECTION, FLARED
 ARLINGTON:
 STA 152+94.7 - STA 153+32.2 RT
 152+88.5 153+26.0

621.51 MANUFACTURED TERMINAL SECTION, TANGENT
 ARLINGTON:
 STA 154+51.0 - STA 155+01.0 LT
 154+69.8 155+19.8

621.60 ANCHOR FOR STEEL BEAM RAIL
 ARLINGTON:
 STA 153+18.5 LT 24.3
 STA 154+45.0 RT 46.5

621.80 REMOVAL AND DISPOSAL OF GUARDRAIL
 ARLINGTON:
 STA 153+13.0 - STA 153+76.0 LT (63.0 LF)
 STA 153+35.0 - STA 153+76.0 RT (41.0 LF)
 STA 154+20.0 - STA 154+32.0 LT (12.0 LF)
 STA 154+20.0 - STA 154+49.0 RT (29.0 LF)

676.10 DELINEATOR WITH STEEL POST
 ARLINGTON:
 STA 152+94.7 RT

- NOTES:
- PAVING LIMIT ON ALL TOWN HIGHWAYS SHALL BE MEASURED 25 FT BACK FROM VT. ROUTE 313 EDGE OF SHOULDER UNLESS DENOTED OTHERWISE ON THE PLANS OR AS DIRECTED BY THE RESIDENT ENGINEER.
 - THE CONTRACTOR SHALL REHAB. THE EXISTING DROP INLETS, CATCH BASINS OR MANHOLES TO A DEPTH AS DIRECTED BY THE RESIDENT ENGINEER. ALL REHAB. WORK WILL BE PAID FOR UNDER THE APPLICABLE REHAB. ITEM AS DIRECTED BY THE RESIDENT ENGINEER. ALL EXISTING UTILITIES MARKED "TO REMAIN" SHALL NOT BE ALTERED OR REHABILITATED UNLESS DIRECTED OTHERWISE BY THE RESIDENT ENGINEER.
 - SEE SHEETS 52 & 53 FOR BRIDGE 4 DETAILS.

SIGN LEGEND
 R = REMOVE
 S = SALVAGE
 N = NEW
 RET = RETAIN
 B-B = BACK TO BACK
 EXISTING = - - - - -
 NEW = _____

NOT TO SCALE

PROJECT LAYOUT SHEET #8	PROJECT NAME: ARLINGTON	PLOT DATE: 20-FEB-2013 16:40
	PROJECT NUMBER: STP 2334(II)	DRAWN BY: C.A.K.
	FILE NAME: OIC042.dgn PROJECT LEADER: D.E.G. DESIGNED BY: M.J.M. IPARM FILE: p01c042108.i	CHECKED BY: D.W.E. SHEET 24 OF 143