

646.402 DURABLE 4 INCH WHITE LINE, THERMOPLASTIC

STA. 171+75 - STA. 187+97 (SOLID LT & RT)
(WITH EDGELINE BREAKS AT TOWN ROADS)

646.412 DURABLE 4 INCH YELLOW LINE, THERMOPLASTIC

STA. 171+75 - STA. 187+97 (SOLID LT & RT)
(WITH CENTERLINE BREAKS AT TOWN ROADS)
STA. 182+10 RT (CENTERLINE TH#3)

646.602 TEMPORARY 4 INCH WHITE LINE, PAINT

STA. 171+75 - STA. 187+97 (SOLID LT & RT)
(WITH EDGELINE BREAKS AT TOWN ROADS)

646.612 TEMPORARY 4 INCH YELLOW LINE, PAINT

STA. 171+75 - STA. 187+97 (SOLID LT & RT)
(WITH CENTERLINE BREAKS AT TOWN ROADS)
STA. 182+10 RT (CENTERLINE TH#3)

646.482 DURABLE 24 INCH STOPBAR, THERMOPLASTIC

STA. 182+08 - STA. 182+25 RT

646.682 TEMPORARY 24 INCH STOPBAR, PAINT

STA. 182+08 - STA. 182+25 RT

646.492 DURABLE LETTER OR SYMBOL, THERMOPLASTIC

STA. 182+15 RT "STOP"

646.692 TEMPORARY LETTER OR SYMBOL, PAINT

STA. 182+15 RT "STOP"

675.50 REMOVING SIGNS

AS SHOWN - 11

675.60 ERECTING SALVAGED SIGNS

AS SHOWN - 3

604.412, 604.415, 604.418 REHAB, DROP

**INLETS, CATCH BASINS, OR MANHOLES, CLASS I,
CLASS II OR CLASS III**

STA. 187+06 LT "TYPE D GRATE"

621.20 STEEL BEAM GUARDRAIL, GALVANIZED

STA. 174+77.00 - STA. 177+27.00 LT
STA. 182+22.00 - STA. 184+44.00 RT

621.205 STEEL BEAM GUARDRAIL, GALVANIZED W/8 FEET POSTS

STA. 171+75.00 - STA. 181+50.00 RT

621.60 ANCHOR FOR STEEL BEAM RAIL

STA. 174+77.00 LT STA. 182+26.00 RT
STA. 177+14.50 LT STA. 182+44.00 RT
STA. 181+37.50 RT STA. 184+31.50 RT

616.35 TREATED TIMBER CURB

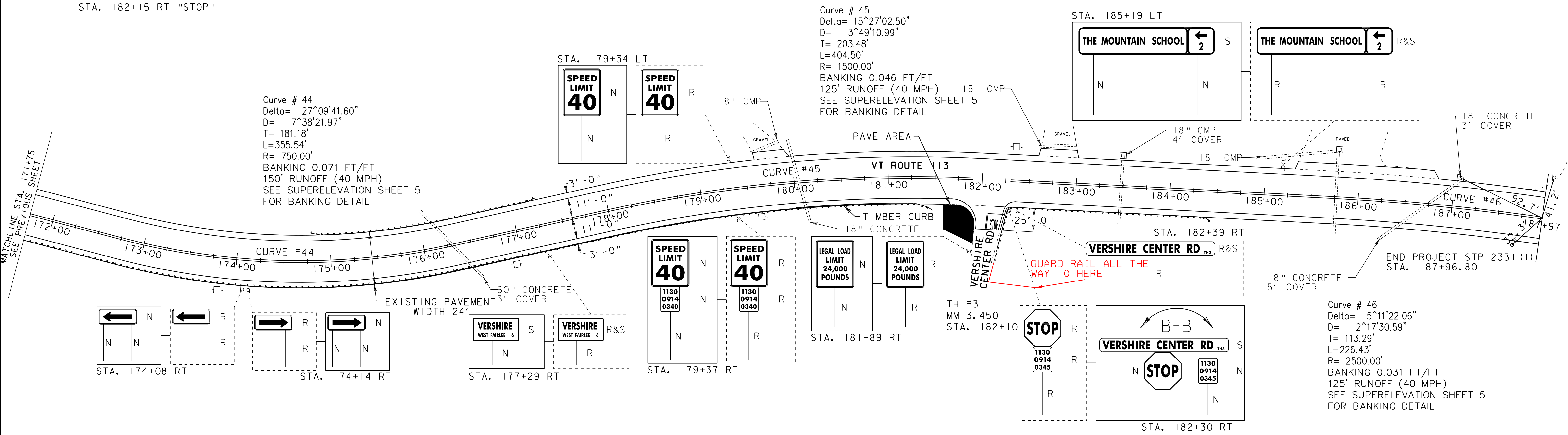
STA. 180+00 - STA. 181+26 RT
179+58

621.80 REMOVAL AND DISPOSAL OF GUARDRAIL

STA. 171+75.00 - STA. 181+50.00 RT
STA. 174+77.00 - STA. 177+27.00 LT
STA. 182+22.00 - STA. 184+44.00 RT

676.10 DELINEATOR WITH STEEL POST

STA. 174+77.00 LT STA. 181+50.00 RT
STA. 177+27.00 LT STA. 184+44.00 RT



Curve # 44
Delta= 27°09'41.60"
D= 7°38'21.97"
T= 181.18'
L=355.54'
R= 750.00'
BANKING 0.071 FT/FT
150' RUNOFF (40 MPH)
SEE SUPERELEVATION SHEET 5
FOR BANKING DETAIL

Curve # 45
Delta= 15°27'02.50"
D= 3°49'10.99"
T= 203.48'
L=404.50'
R= 1500.00'
BANKING 0.046 FT/FT
125' RUNOFF (40 MPH)
SEE SUPERELEVATION SHEET 5
FOR BANKING DETAIL

Curve # 46
Delta= 5°11'22.06"
D= 2°17'30.59"
T= 113.29'
L=226.43'
R= 2500.00'
BANKING 0.031 FT/FT
125' RUNOFF (40 MPH)
SEE SUPERELEVATION SHEET 5
FOR BANKING DETAIL

SIGN LEGEND
R = REMOVE
R&S = REMOVE AND SALVAGE
S = SALVAGE
RET = RETAIN
N = NEW
B-B = BACK TO BACK

LEGEND
UTILITY POLE
HYDRANT
CATCH BASIN / DROP INLET

NOT TO SCALE

PROJECT LAYOUT SHEET 15	PROJECT NAME: CHLSEA-VERSHERE	PLOT DATE: 28-OCT-2011 13:36
	PROJECT NUMBER: STP 2331(1)S	DRAWN BY: BMB
	FILE NAME: 01c040.dgn	CHECKED BY: EPD
	PROJECT LEADER: CDL	SHEET 30 OF 55
DESIGNED BY: BMB		
PLOT FILE: 01c040_30.i		