

621.80 REMOVAL AND DISPOSAL OF GUARDRAIL

STA. 15+75.00 - STA. 15+85.00 RT
 STA. 16+59.00 - STA. 17+34.00 RT
 STA. 16+88.00 - STA. 17+63.00 LT
 STA. 21+51.00 - STA. 26+13.50 LT
 STA. 29+07.50 - STA. 31+75.00 LT

621.20 STEEL BEAM GUARDRAIL, GALVANIZED

~~STA. 15+75.00 - STA. 17+34.00 RT~~
~~STA. 16+88.00 - STA. 17+63.00 LT~~
~~STA. 29+07.50 - STA. 31+75.00 LT~~
~~STA. 16+44.00 - STA. 17+35.00 RT~~
~~STA. 16+88.00 - STA. 18+00.00 LT~~

621.205 STEEL BEAM GUARDRAIL, GALVANIZED W/8 FEET POSTS

~~STA. 21+38.50 - STA. 26+76.00 LT~~
~~STA. 29+47.00 - STA. 31+75.00 LT~~
~~STA. 21+51.00 - STA. 26+17.00 LT~~

621.60 ANCHOR FOR STEEL BEAM RAIL

STA. 16+88.00 LT
 STA. 17+21.50 RT
 STA. 17+51.50 LT
~~STA. 21+38.50 LT~~
~~STA. 26+63.50 LT~~
 STA. 29+07.50 LT
 STA. 21+51.00 LT
 STA. 26+05.00 LT
 STA. 16+43.50 RT

676.10 DELINEATOR WITH STEEL POST

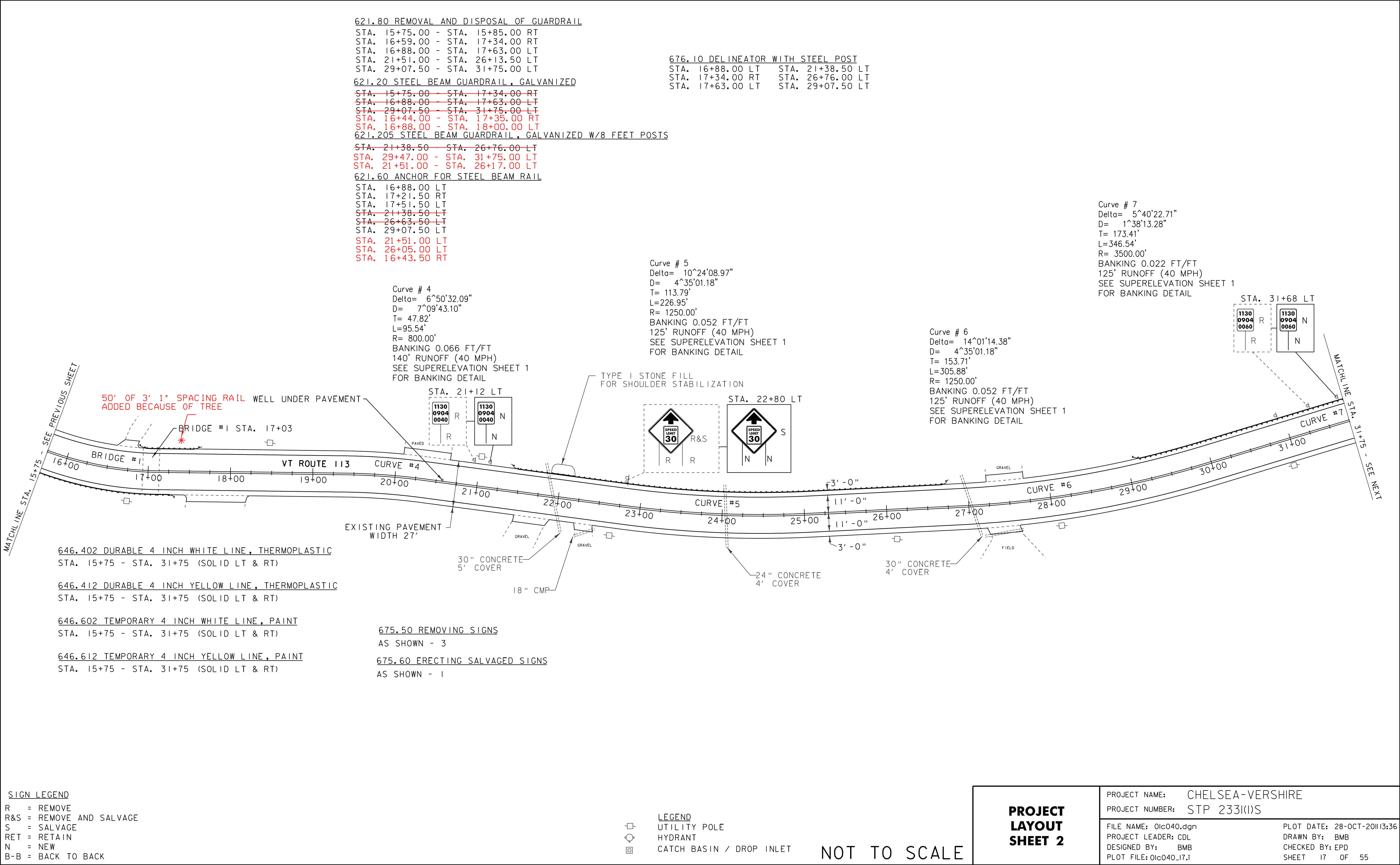
STA. 16+88.00 LT STA. 21+38.50 LT
 STA. 17+34.00 RT STA. 26+76.00 LT
 STA. 17+63.00 LT STA. 29+07.50 LT

Curve # 4
 Delta= 6°50'32.09"
 D= 7°09'43.10"
 T= 47.82'
 L=95.54'
 R= 800.00'
 BANKING 0.066 FT/FT
 140' RUNOFF (40 MPH)
 SEE SUPERELEVATION SHEET 1
 FOR BANKING DETAIL

Curve # 5
 Delta= 10°24'08.97"
 D= 4°35'01.18"
 T= 113.79'
 L=226.95'
 R= 1250.00'
 BANKING 0.052 FT/FT
 125' RUNOFF (40 MPH)
 SEE SUPERELEVATION SHEET 1
 FOR BANKING DETAIL

Curve # 6
 Delta= 14°01'14.38"
 D= 4°35'01.18"
 T= 153.71'
 L=305.88'
 R= 1250.00'
 BANKING 0.052 FT/FT
 125' RUNOFF (40 MPH)
 SEE SUPERELEVATION SHEET 1
 FOR BANKING DETAIL

Curve # 7
 Delta= 5°40'22.71"
 D= 1°38'13.28"
 T= 173.41'
 L=346.54'
 R= 3500.00'
 BANKING 0.022 FT/FT
 125' RUNOFF (40 MPH)
 SEE SUPERELEVATION SHEET 1
 FOR BANKING DETAIL



646.402 DURABLE 4 INCH WHITE LINE, THERMOPLASTIC
 STA. 15+75 - STA. 31+75 (SOLID LT & RT)

646.412 DURABLE 4 INCH YELLOW LINE, THERMOPLASTIC
 STA. 15+75 - STA. 31+75 (SOLID LT & RT)

646.602 TEMPORARY 4 INCH WHITE LINE, PAINT
 STA. 15+75 - STA. 31+75 (SOLID LT & RT)

646.612 TEMPORARY 4 INCH YELLOW LINE, PAINT
 STA. 15+75 - STA. 31+75 (SOLID LT & RT)

675.50 REMOVING SIGNS
 AS SHOWN - 3

675.60 ERECTING SALVAGED SIGNS
 AS SHOWN - 1

SIGN LEGEND

R = REMOVE
 R&S = REMOVE AND SALVAGE
 S = SALVAGE
 RET = RETAIN
 N = NEW
 B-B = BACK TO BACK

LEGEND

□ UTILITY POLE
 ○ HYDRANT
 □ CATCH BASIN / DROP INLET

PROJECT LAYOUT SHEET 2

NOT TO SCALE

PROJECT NAME: CHELSEA-VERSHIRE
 PROJECT NUMBER: STP 2331(1)S

FILE NAME: 01c040.dgn
 PROJECT LEADER: CDL
 DESIGNED BY: BMB
 PLOT FILE: 01c040_17.i

PLOT DATE: 28-OCT-2011 13:36
 DRAWN BY: BMB
 CHECKED BY: EPD
 SHEET 17 OF 55