

629.20 ADJUST ELEVATION OF VALVE BOX

STA. 0+48 RT  
STA. 4+04 LT  
STA. 4+87 LT

604.412, 604.415, 604.418 REHAB, DROP  
INLETS, CATCH BASINS, OR MANHOLES, CLASS I,  
CLASS II OR CLASS III

STA. 0+91 RT "TYPE D GRATE"  
STA. 4+73 LT "TYPE D GRATE"  
STA. 6+93 RT "TYPE D GRATE"  
STA. 7+24 LT "TYPE D GRATE"  
STA. 8+03 RT "TYPE D GRATE"  
STA. 8+25 LT "TYPE D GRATE"  
STA. 10+41 LT "TYPE B GRATE"  
STA. 13+02 LT "TYPE B GRATE"

604.42 CHANGE ELEVATION OF  
SEWER MANHOLES

STA. 2+66 RT  
STA. 5+43 RT  
STA. 8+24 RT

616.47 BITUMINOUS CONCRETE GUTTERS AND TRAFFIC ISLANDS

STA. 5+10 - STA. 8+50 LT  
621.51 MANUFACTURED TERMINAL SECTION, TANGENT  
STA. 8+80.00 - STA. 9+30.00 RT NOT USED

621.80 REMOVAL AND DISPOSAL OF GUARDRAIL

STA. 8+80.00 - STA. 9+42.50 RT  
STA. 9+52.00 - STA. 12+02.00 RT  
STA. 13+83.00 - STA. 15+75.00 RT

8+80.00 RT

621.20 STEEL BEAM GUARDRAIL, GALVANIZED

STA. 9+30.00 - STA. 9+42.50 RT  
STA. 9+52.00 - STA. 10+21.00 RT  
STA. 11+21.00 - STA. 11+99.00 RT  
STA. 15+33.50 - STA. 15+75.00 RT

621.60 ANCHOR FOR STEEL BEAM RAIL

STA. 9+30.00 RT STA. 11+86.50 RT  
STA. 9+52.00 RT STA. 13+83.00 RT  
STA. 8+80.00 RT STA. 15+10.00 RT

676.10 DELINEATOR WITH STEEL POST

STA. 8+80.00 RT STA. 11+99.00 RT  
STA. 9+42.50 RT STA. 13+83.00 RT  
STA. 9+52.00 RT

675.50 REMOVING SIGNS

AS SHOWN - 18

675.60 ERECTING SALVAGED SIGNS

AS SHOWN - 14

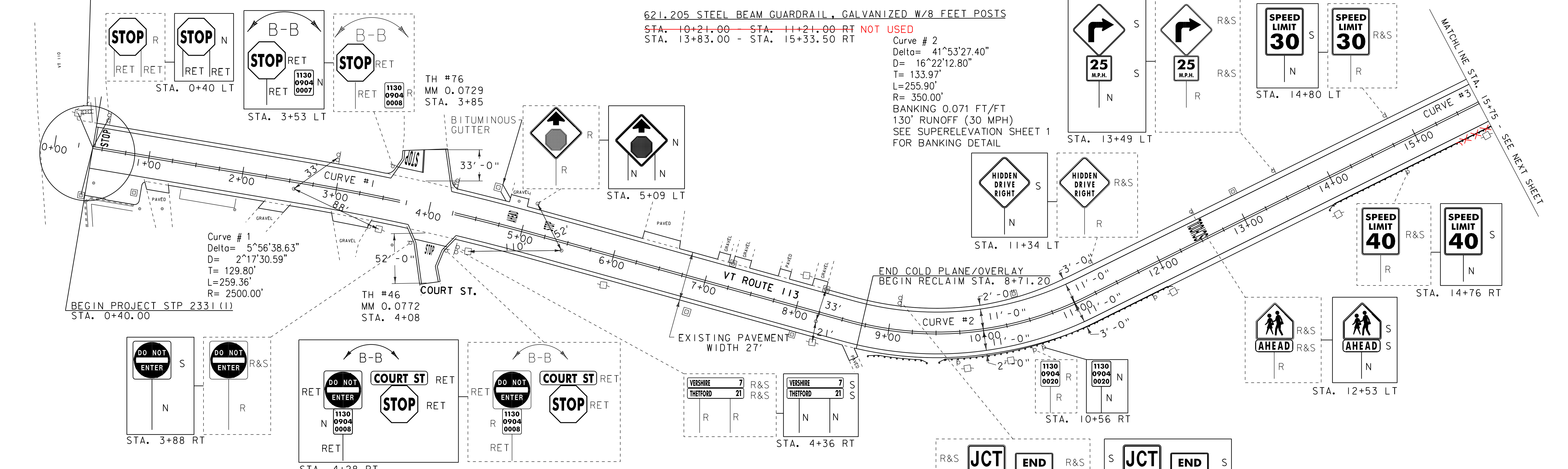
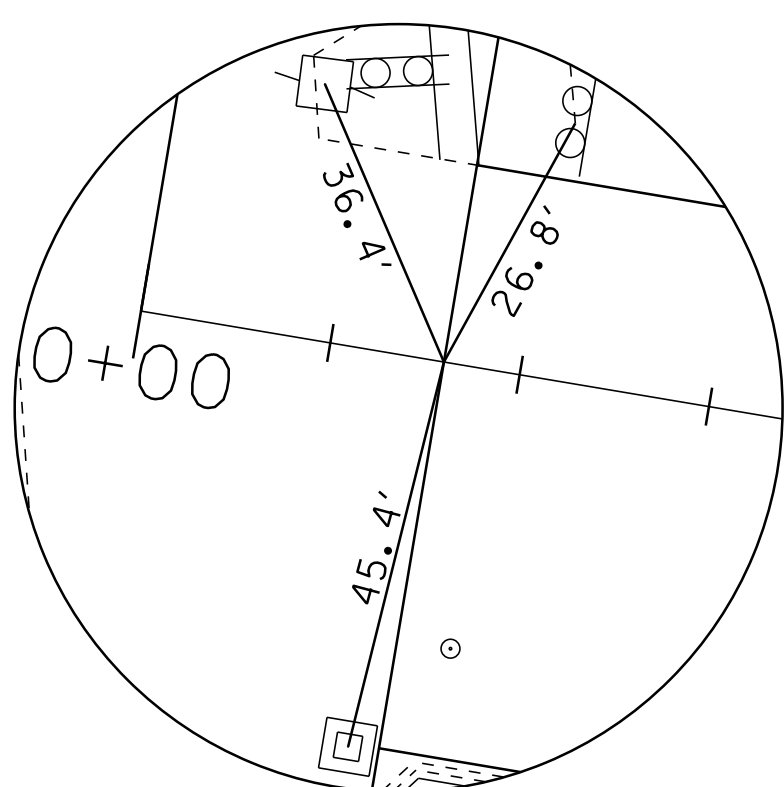
Curve # 3  
Delta= 20°51'40.91"  
D= 14°19'26.20"  
T= 73.64'  
L=145.64'  
R= 400.00'  
BANKING 0.080 FT/FT  
170' RUNOFF (40 MPH)  
SEE SUPERELEVATION SHEET 1  
FOR BANKING DETAIL

621.205 STEEL BEAM GUARDRAIL, GALVANIZED W/8 FEET POSTS

STA. 10+21.00 - STA. 11+21.00 RT NOT USED  
STA. 13+83.00 - STA. 15+33.50 RT

Curve # 2

Delta= 41°53'27.40"  
D= 16°22'12.80"  
T= 133.97'  
L=255.90'  
R= 350.00'  
BANKING 0.071 FT/FT  
130' RUNOFF (30 MPH)  
SEE SUPERELEVATION SHEET 1  
FOR BANKING DETAIL



**SIGN LEGEND**  
R = REMOVE  
R&S = REMOVE AND SALVAGE  
S = SALVAGE  
RET = RETAIN  
N = NEW  
B-B = BACK TO BACK

646.402 DURABLE 4 INCH WHITE LINE, THERMOPLASTIC  
STA. 0+40 - STA. 15+75 (SOLID LT & RT)  
(WITH EDGELINE BREAKS AT TOWN ROADS)  
646.412 DURABLE 4 INCH YELLOW LINE, THERMOPLASTIC  
STA. 0+40 - STA. 15+75 (SOLID LT & RT)  
(WITH CENTERLINE BREAKS AT TOWN ROADS)  
STA. 3+85 LT (CENTERLINE TH#76)  
646.602 TEMPORARY 4 INCH WHITE LINE, PAINT  
STA. 0+40 - STA. 15+75 (SOLID LT & RT)  
(WITH EDGELINE BREAKS AT TOWN ROADS)  
646.612 TEMPORARY 4 INCH YELLOW LINE, PAINT  
STA. 0+40 - STA. 15+75 (SOLID LT & RT)  
(WITH CENTERLINE BREAKS AT TOWN ROADS)  
STA. 3+85 LT (CENTERLINE TH#76)

646.482 DURABLE 24 INCH STOP BAR, THERMOPLASTIC  
STA. 0+43 LT  
STA. 3+57 - STA. 3+85 LT  
STA. 3+95 - STA. 4+27 RT  
646.492 DURABLE LETTER OR SYMBOL, THERMOPLASTIC  
STA. 0+52 LT "STOP" STA. 4+87 LT "AHEAD"  
STA. 3+71 LT "STOP" STA. 5+27 LT "STOP"  
STA. 4+10 RT "STOP" STA. 12+53 LT "SCHOOL"  
646.682 TEMPORARY 24 INCH STOP BAR, PAINT  
STA. 0+43 LT  
STA. 3+57 - STA. 3+85 LT  
STA. 3+95 - STA. 4+27 RT  
646.692 TEMPORARY LETTER OR SYMBOL, PAINT  
STA. 0+52 LT "STOP" STA. 4+87 LT "AHEAD"  
STA. 3+71 LT "STOP" STA. 5+27 LT "STOP"  
STA. 4+10 RT "STOP" STA. 12+53 LT "SCHOOL"

**LEGEND**  
□ UTILITY POLE  
○ HYDRANT  
⊗ CATCH BASIN / DROP INLET

NOT TO SCALE

**PROJECT LAYOUT SHEET 1**

PROJECT NAME: CHelsea-VERSHIRE  
PROJECT NUMBER: STP 2331(1)S  
FILE NAME: 01c040.dgn  
PROJECT LEADER: CDL  
DESIGNED BY: BMB  
PLOT FILE: 01c040\_16.1  
PLOT DATE: 28-OCT-2011 13:36  
DRAWN BY: BMB  
CHECKED BY: EPD  
SHEET 16 OF 55