

TEMPORARY 4" YELLOW LINE, PAINT
 DURABLE 4" YELLOW LINE, THERMOPLASTIC
 STA 26+00 TO 28+65 SOLID LT & RT
 STA 28+81 DOUBLE SOLID RT (TH 59)
 STA 29+05 TO 36+50 SOLID LT & RT

TEMPORARY 4" WHITE LINE, PAINT
 DURABLE 4" WHITE LINE, THERMOPLASTIC
 STA 26+00 TO 28+71 SOLID RT
 STA 26+00 TO 36+50 SOLID LT
 STA 28+92 TO 36+50 SOLID RT

TEMPORARY LETTER OR SYMBOL, PAINT
 DURABLE LETTER OR SYMBOL, THERMOPLASTIC
 STA 28+81 RT - "STOP" (TH 59)

TEMPORARY 24" STOP BAR, PAINT
 DURABLE 24" STOP BAR, THERMOPLASTIC
 STA 28+81 RT (TH 59)

TEMPORARY RAILROAD CROSSING SYMBOL, PAINT
 DURABLE RAILROAD CROSSING SYMBOL, THERMOPLASTIC
 STA 29+91 LT

REMOVAL AND DISPOSAL OF GUARDRAIL
 STA 26+00 TO 28+68 RT
 STA 28+94 TO 34+83 RT

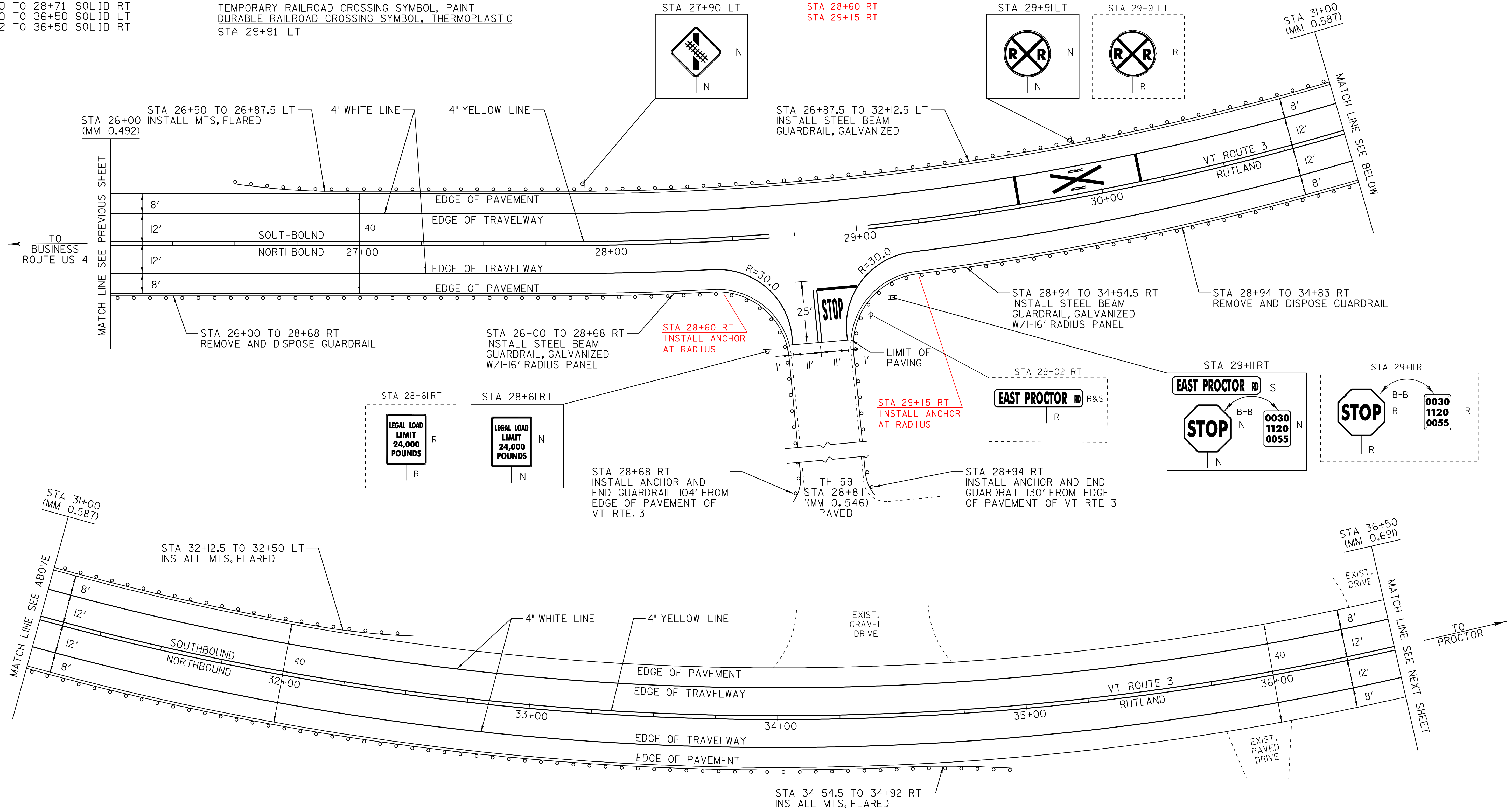
STEEL BEAM GUARDRAIL, GALVANIZED
 STA 26+00.0 TO 28+68.0 RT
 STA 28+94.0 TO 34+54.5 RT

MANUFACTURED TERMINAL SECTION, FLARED
 STA 26+50.0 TO 26+87.5 LT
 STA 32+12.5 TO 32+50.0 LT
 STA 34+54.5 TO 34+92.0 RT

ANCHOR FOR STEEL BEAM RAIL
 STA 28+68 RT (ON TH 59)
 STA 28+94 RT (ON TH 59)
 STA 28+60 RT
 STA 29+15 RT

REMOVING SIGNS
 AS SHOWN - 5

ERECTING SALVAGED SIGNS
 AS SHOWN - 1



NOT TO SCALE

LEGEND

- R = REMOVE EXISTING
- S = SALVAGE
- R&S = REMOVE AND SALVAGE
- N = NEW
- RET = RETAIN
- B-B = BACK TO BACK
- = NEW GUARDRAIL
- = EXISTING GUARDRAIL

PAVING PROJECT LAYOUT #4

SIGN INVENTORY SHEET

PROJECT: RUTLAND - PROCTOR	PROJECT NO.: STP 2312(I)S
DESIGN FILE NAME: /pave/01C020/pc020.dgn	PLOT DATE: 07-OCT-2008 11:
IPARM FILE NAME: pc020la04.i	SURVEY DATE: 12/05
SURVEYED BY: CLD ENGINEERS, INC	SQUAD LEADER: PTS
CLD REF. NO. 05-0390	DRAWN BY: JCS
	SHEET: 13 OF 33