

TEMPORARY 4" WHITE LINE, PAINT
 DURABLE 4" WHITE LINE, THERMOPLASTIC
 STA 301+25 TO 303+75 SOLID RT
 STA 301+25 TO 302+30 SOLID LT
 STA 303+10 TO 303+75 SOLID LT

TEMPORARY 4" YELLOW LINE, PAINT
 DURABLE 4" YELLOW LINE, THERMOPLASTIC
 STA 301+25 TO 302+50 SOLID LT & RT
 STA 302+70 DOUBLE SOLID LT (TH 17)
 STA 302+90 TO 303+75 SOLID LT & RT

TEMPORARY 24" STOP BAR, PAINT
 DURABLE 24" STOP BAR, THERMOPLASTIC
 STA 302+70 LT (TH 17)

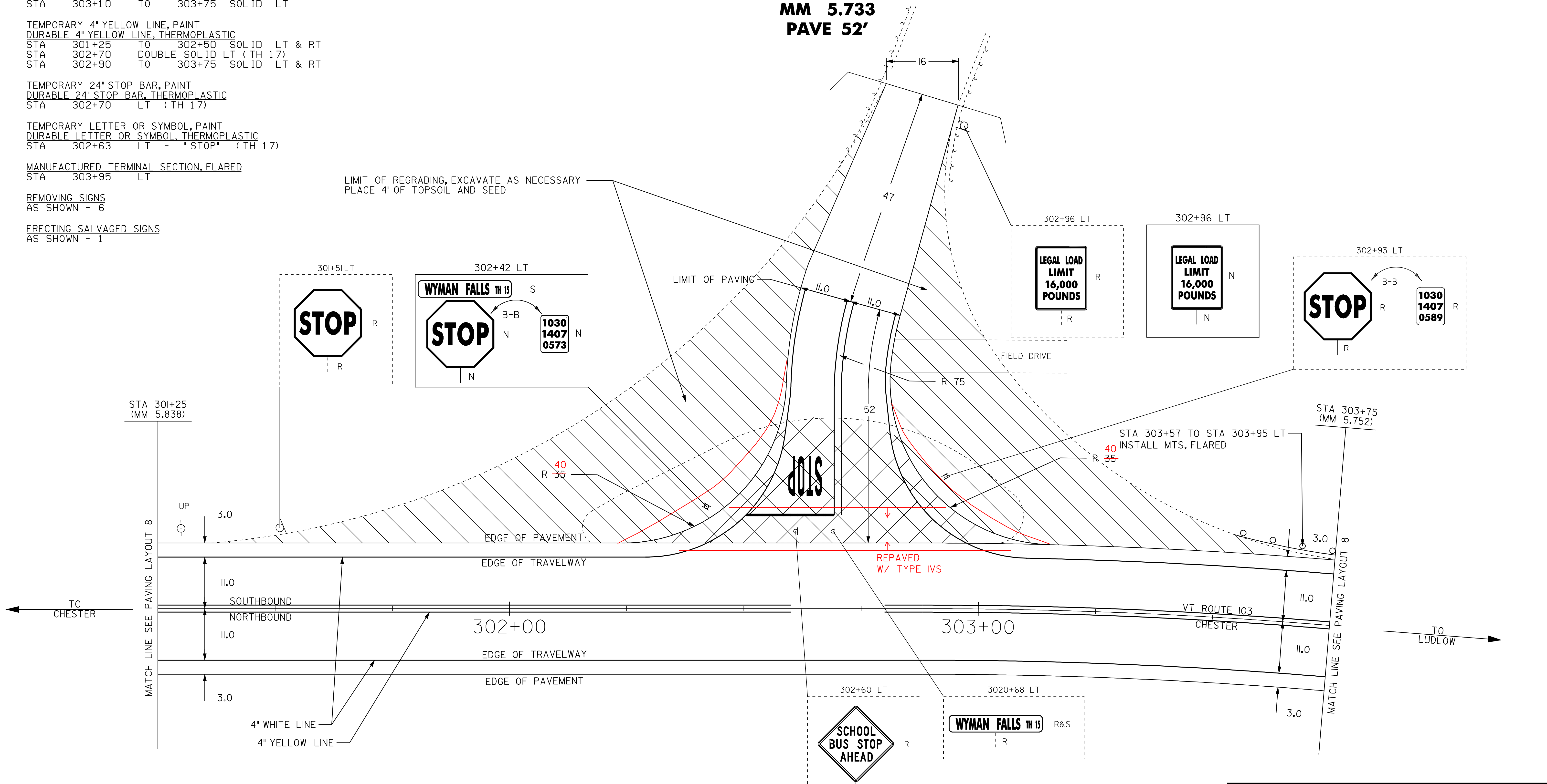
TEMPORARY LETTER OR SYMBOL, PAINT
 DURABLE LETTER OR SYMBOL, THERMOPLASTIC
 STA 302+63 LT - "STOP" (TH 17)

MANUFACTURED TERMINAL SECTION, FLARED
 STA 303+95 LT

REMOVING SIGNS
 AS SHOWN - 6

ERECTING SALVAGED SIGNS
 AS SHOWN - 1

TH 17
STA 302+70
MM 5.733
PAVE 52'



NOTE:
 PRIOR TO AN EXCAVATION THE CONTRACTOR IS TO CONTACT VTCL TO DETERMINE THE EXACT LOCATION OF THE BURIED CABLE.

- LEGEND**
- R = REMOVE EXISTING
 - S = SALVAGE
 - R&S = REMOVE AND SALVAGE
 - N = NEW
 - RET = RETAIN
 - B-B = BACK TO BACK
 - = NEW RAIL
 - = EXISTING RAIL

INTERSECTION DETAIL SHEET 1

SURVEYED BY CLD DATE 1/05
 DRAWN BY NLL DATE 5/05
 SQUAD LEADER CRB
 DESIGN FILE NO. /pave/01b038/pb038.dgn
 IPARM FILE pb0381a57.i DATE PLOTTED 10/05/09
 PROJ. NAME CHESTER - LUDLOW
 PROJ. NO. NH 2326(1)S
 SHEET 71 OF 110 SHEETS