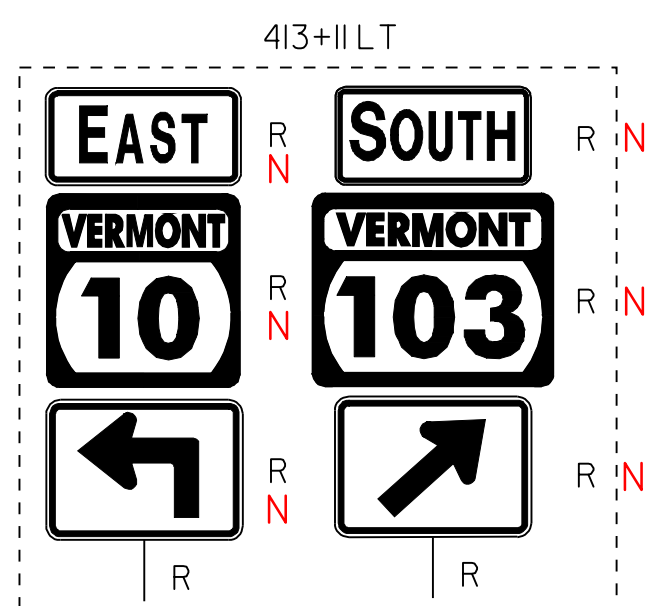
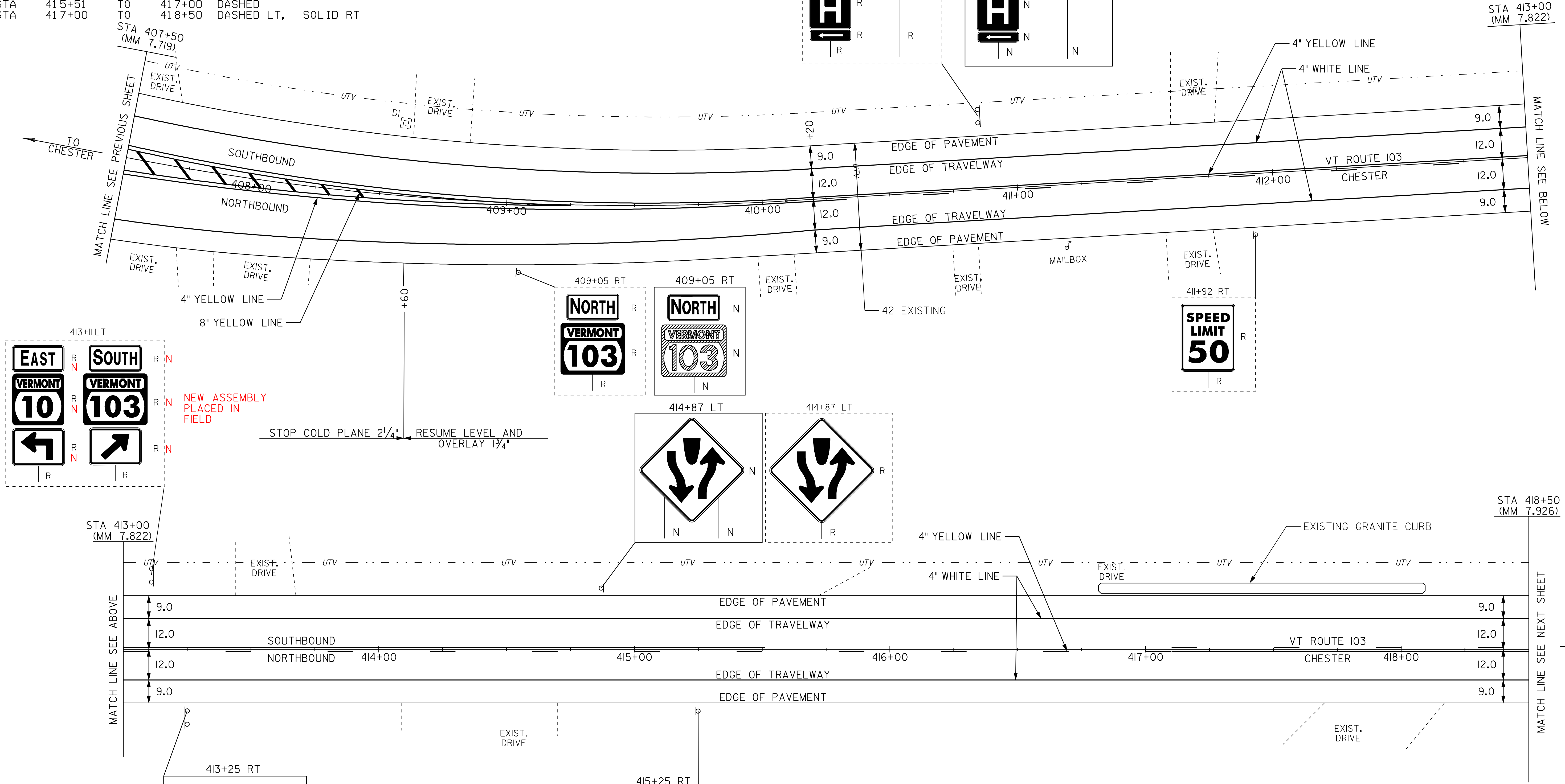
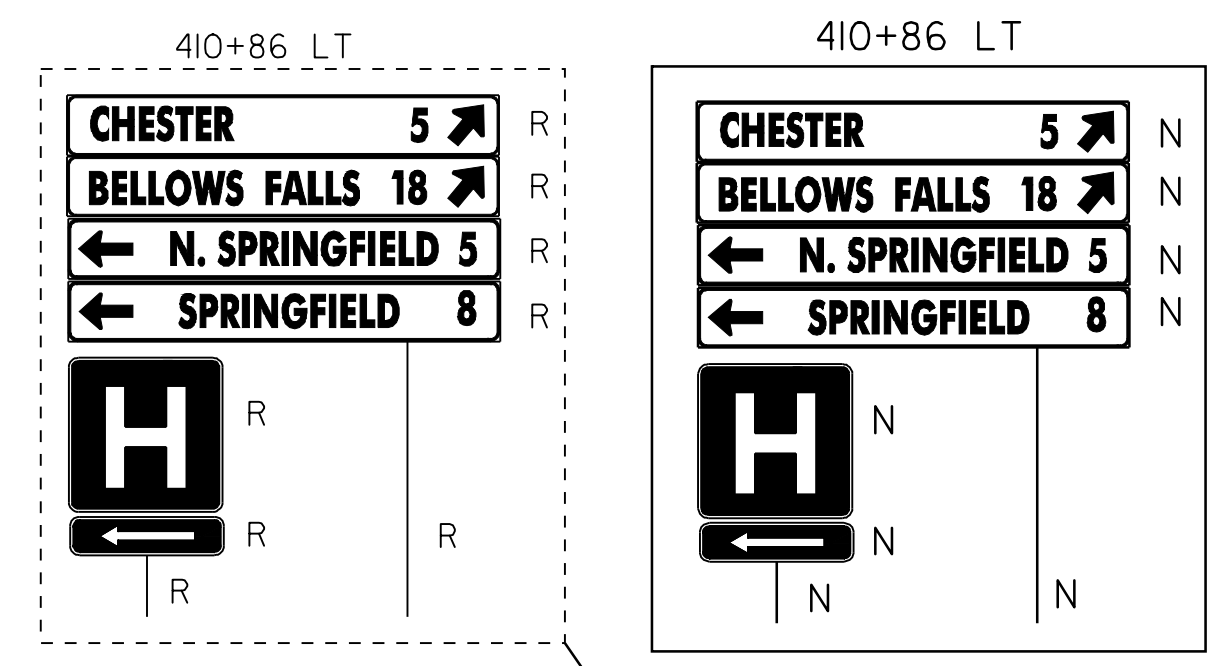


TEMPORARY 4" WHITE LINE, PAINT
 DURABLE 4" WHITE LINE, THERMOPLASTIC
 STA 407+50 TO 418+50 SOLID LT
 STA 407+50 TO 418+50 SOLID RT

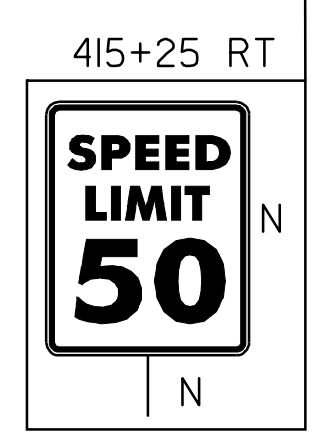
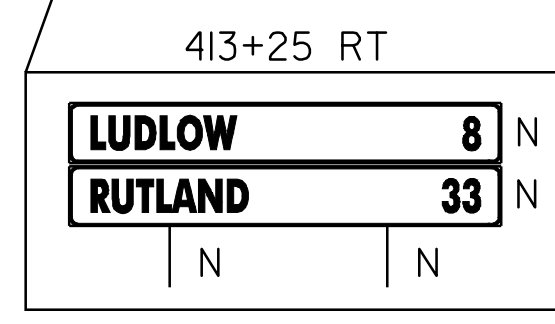
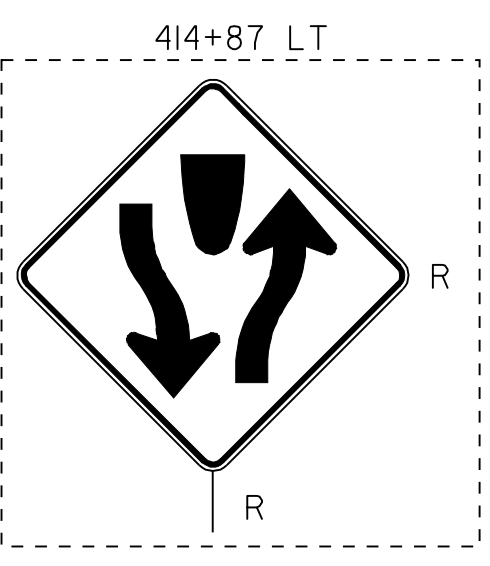
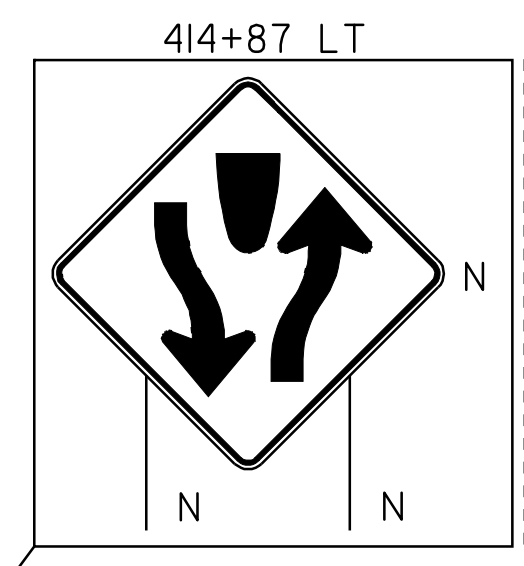
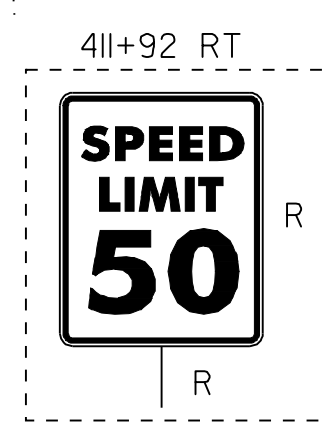
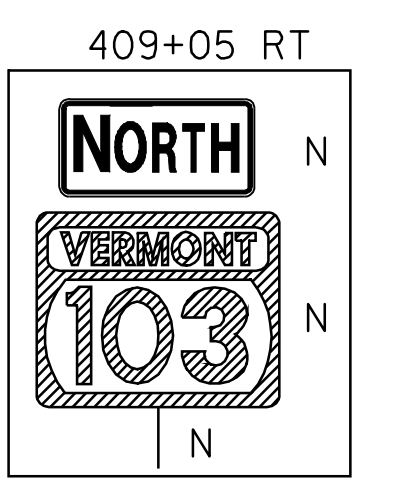
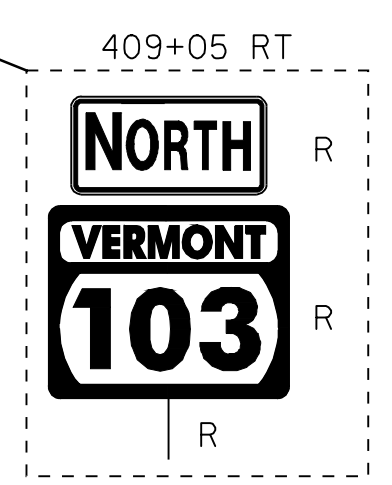
TEMPORARY 4" YELLOW LINE, PAINT
 DURABLE 4" YELLOW LINE, THERMOPLASTIC
 STA 407+50 TO 409+25 DOUBLE SOLID LT (ISLAND)
 STA 407+50 TO 409+25 DOUBLE SOLID RT (ISLAND)
 STA 409+25 TO 410+23 SOLID LT & RT
 STA 410+23 TO 415+51 SOLID LT, DASHED RT
 STA 415+51 TO 417+00 DASHED
 STA 417+00 TO 418+50 DASHED LT, SOLID RT

TEMPORARY 8" YELLOW LINE, PAINT
 DURABLE 8" YELLOW LINE, THERMOPLASTIC
 STA 407+50 TO 408+43 (GORE)
 REMOVING SIGNS
 AS SHOWN - 16



NEW ASSEMBLY
 PLACED IN
 FIELD

STOP COLD PLANE 2 1/4"
 RESUME LEVEL AND
 OVERLAY 1 1/4"



- LEGEND**
- R = REMOVE EXISTING
 - S = SALVAGE
 - R&S = REMOVE AND SALVAGE
 - N = NEW
 - RET = RETAIN
 - B-B = BACK TO BACK
 - = NEW RAIL
 - - - = EXISTING RAIL

PAVING PROJECT LAYOUT #20	PROJECT: CHESTER-LUDLOW	PROJECT NO.: NH 2326(1)S
	DESIGN FILE NAME: Z:\pave\01b038\pb038.dgn	PLOT DATE: 16-OCT-2009 16:
	IPARM FILE NAME: pb0381a20.1	SURVEY DATE: 01/05
	SURVEYED BY: CLD_ENGINEERS, INC	DRAWN BY: MRS
	SQUAD LEADER: CRB	SHEET: 34 OF 110
	CLD 04-0396	