

TEMPORARY 4" WHITE LINE, PAINT
 DURABLE 4" WHITE LINE, THERMOPLASTIC
 STA 332+00 TO 335+83 SOLID LT
 STA 332+00 TO 343+00 SOLID RT
 STA 336+63 TO 343+00 SOLID LT

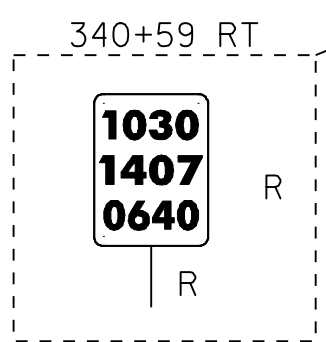
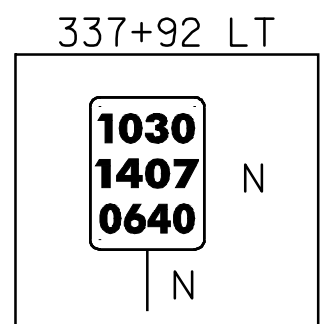
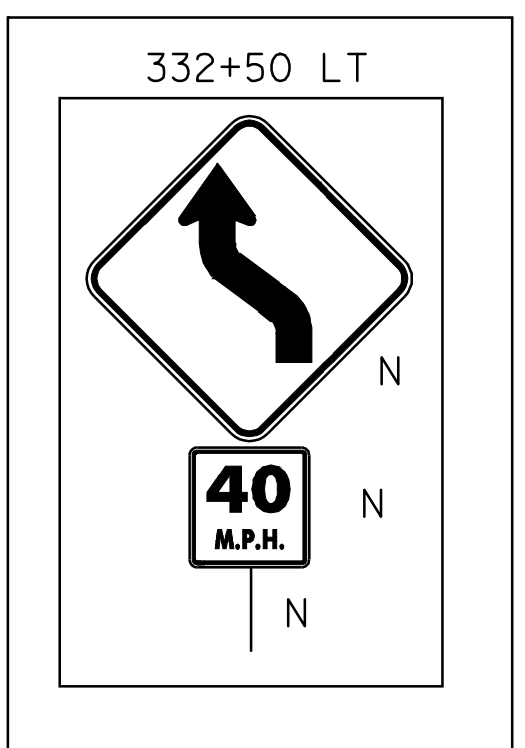
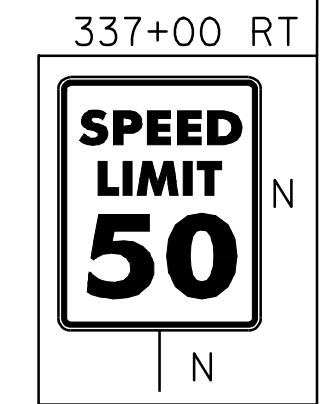
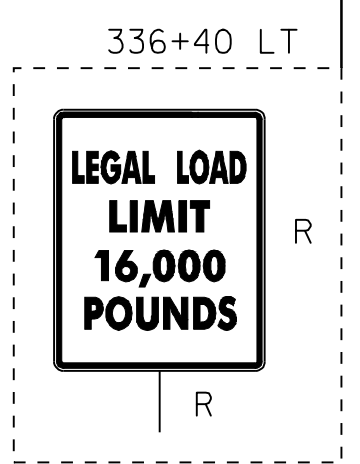
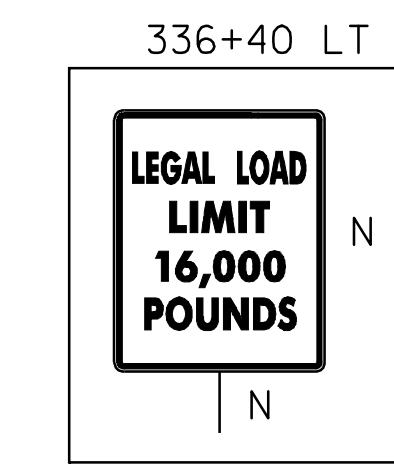
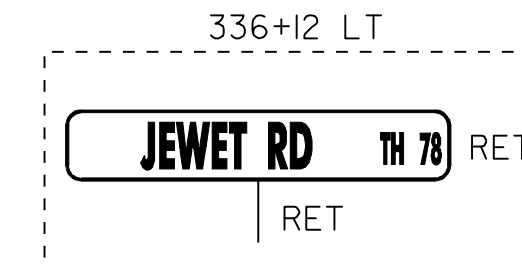
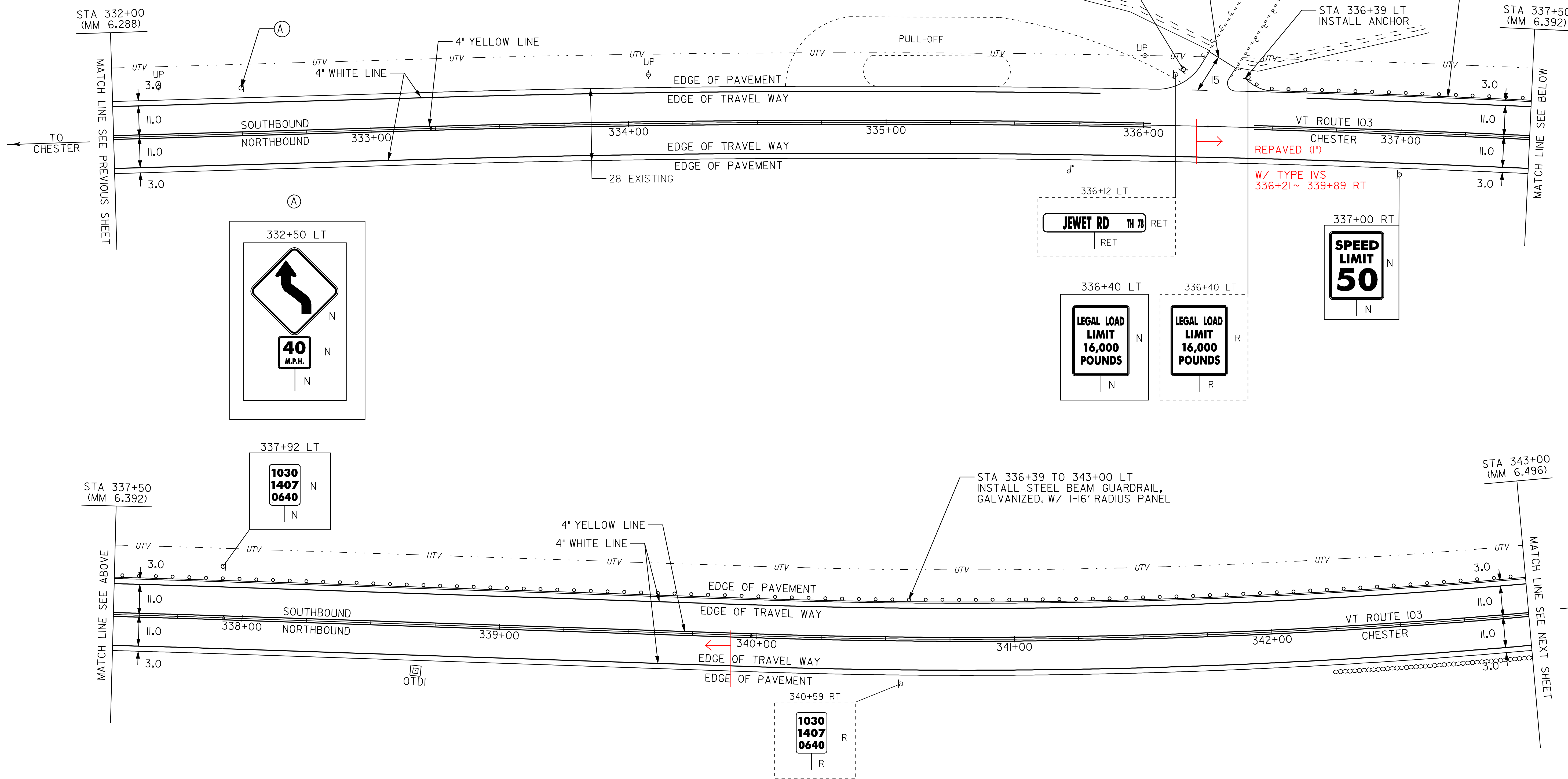
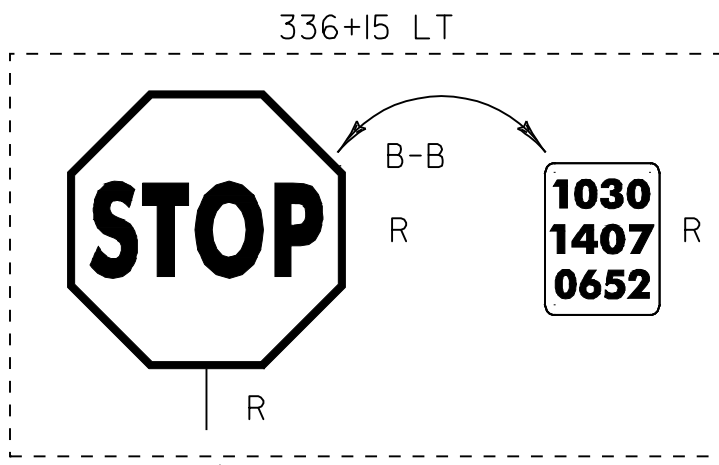
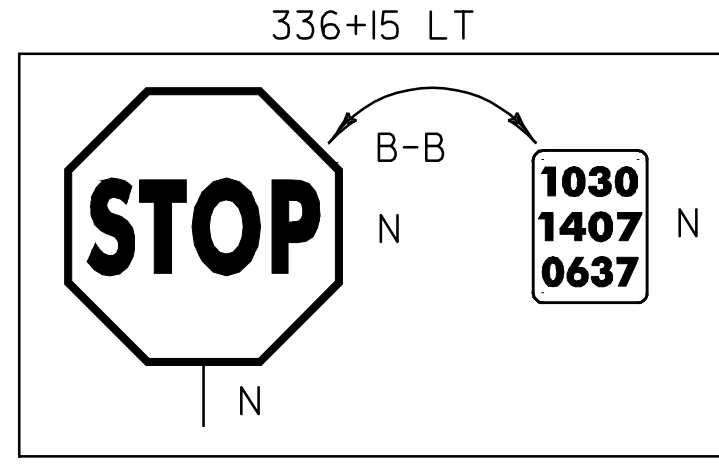
TEMPORARY 4" YELLOW LINE, PAINT
 DURABLE 4" YELLOW LINE, THERMOPLASTIC
 STA 332+00 TO 336+03 SOLID LT & RT
 STA 336+43 TO 343+00 SOLID LT & RT

REHAB. DROP INLETS, CATCH BASINS, OR MANHOLES, CLASS I
 STA 338+68 OTDI RT

STEEL BEAM GUARDRAIL, GALVANIZED
 STA 336+39 TO 343+00 LT
 ANCHOR FOR STEEL BEAM RAIL
 STA 336+39 LT

REMOVAL AND DISPOSAL OF GUARDRAIL
 STA 336+39 TO 338+75 LT

REMOVING SIGNS
 AS SHOWN - 4



LEGEND

- R = REMOVE EXISTING
- S = SALVAGE
- R&S = REMOVE AND SALVAGE
- N = NEW
- RET = RETAIN
- B-B = BACK TO BACK
- = NEW RAIL
- — — = EXISTING RAIL

PAVING PROJECT LAYOUT #11

PROJECT: CHESTER-LUDLOW	PROJECT NO.: NH 2326(I)S
DESIGN FILE NAME: Z:\pave\01b\038\pb038.dgn	PLOT DATE: 16-OCT-2009 16:
IPARM FILE NAME: pb0381a11.i	SURVEY DATE: 01/05
SURVEYED BY: CLD_ENGINEERS, INC	DRAWN BY: MRS
SQUAD LEADER: CRB	SHEET: 25 OF 110
CLD 04-0396	