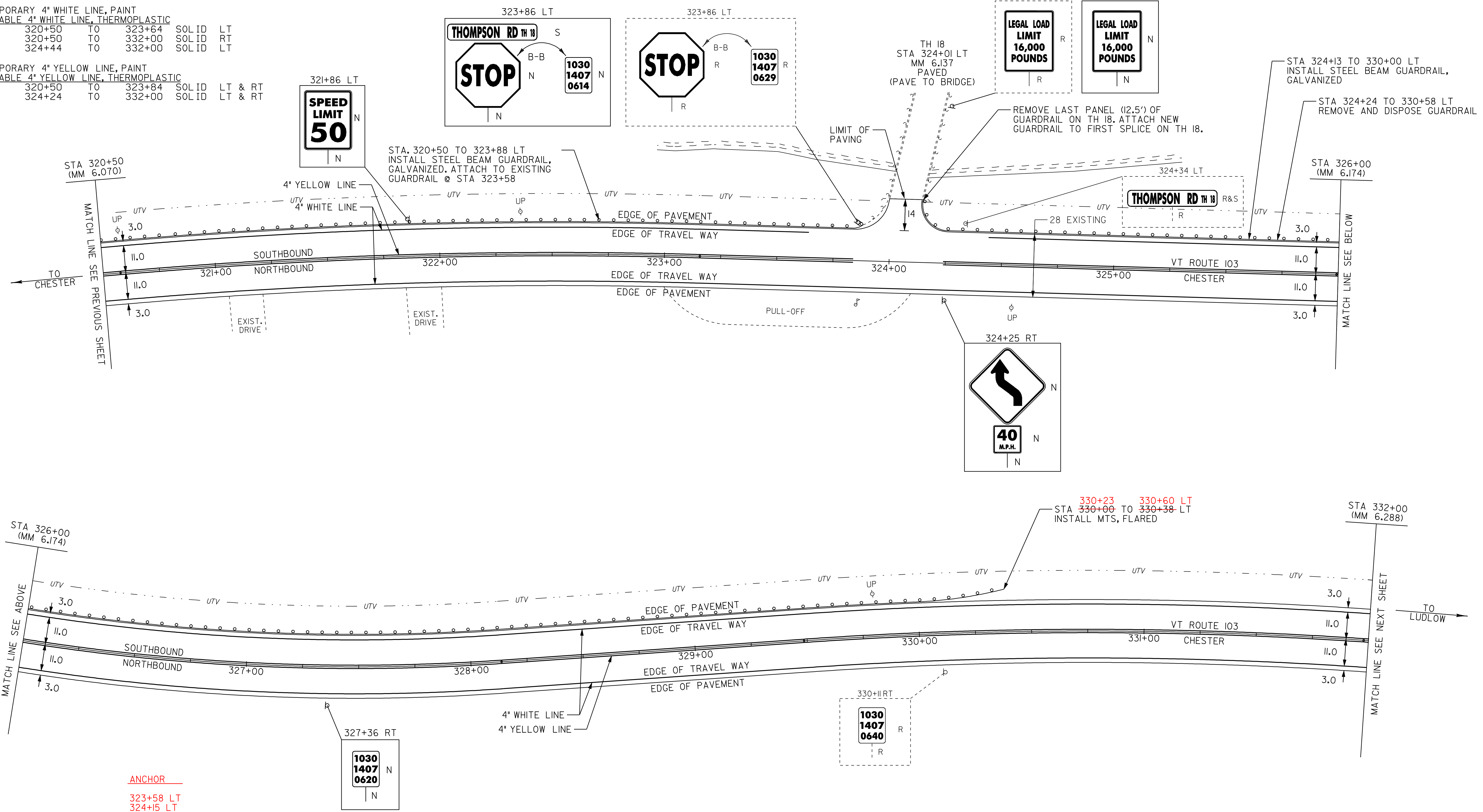


TEMPORARY 4" WHITE LINE, PAINT
 DURABLE 4" WHITE LINE, THERMOPLASTIC

STA 320+50	TO	323+64	SOLID	LT
STA 320+50	TO	332+00	SOLID	RT
STA 324+44	TO	332+00	SOLID	LT

TEMPORARY 4" YELLOW LINE, PAINT
 DURABLE 4" YELLOW LINE, THERMOPLASTIC

STA 320+50	TO	323+84	SOLID	LT & RT
STA 324+24	TO	332+00	SOLID	LT & RT



ANCHOR
 323+58 LT
 324+15 LT

STEEL BEAM GUARDRAIL, GALVANIZED
 STA 320+50 TO 323+88 LT
 STA 324+13 TO 330+00 LT

MANUFACTURED TERMINAL SECTION, FLARED
 STA 330+00 TO 330+23 LT

REMOVAL AND DISPOSAL OF GUARDRAIL
 STA 324+24 TO 330+58 LT
 TH 18 RT 12.5'

REMOVAL AND DISPOSAL OF GUIDE POSTS
 STA 324+18 TO 324+24 LT

REMOVING SIGNS
 AS SHOWN - 5

ERECTING SALVAGED SIGNS
 AS SHOWN - 1

LEGEND

- R = REMOVE EXISTING
- S = SALVAGE
- R&S = REMOVE AND SALVAGE
- N = NEW
- RET = RETAIN
- B-B = BACK TO BACK
- = NEW RAIL
- = EXISTING RAIL

PAVING PROJECT LAYOUT #10

PROJECT: CHESTER-LUDLOW	PROJECT NO.: NH 2326(I)S
DESIGN FILE NAME: Zpave\Qlb038\pb038.dgn	PLOT DATE: 16-OCT-2009 16:
IPARM FILE NAME: pb0381a10.i	SURVEY DATE: Q1205
SURVEYED BY: CLD_ENGINEERS, INC	SQUAD LEADER: CRB
CLD 04-0396	DRAWN BY: MRS
	SHEET: 24 OF 110