

TEMPORARY 4" WHITE LINE, PAINT
DURABLE 4" WHITE LINE, THERMOPLASTIC

STA 287+50	TO	290+12	SOLID	LT
STA 287+50	TO	298+50	SOLID	RT
STA 290+92	TO	298+50	SOLID	LT

TEMPORARY 4" YELLOW LINE, PAINT
DURABLE 4" YELLOW LINE, THERMOPLASTIC

STA 287+50	TO	290+32	SOLID	LT & RT
STA 290+72	TO	298+50	SOLID	LT & RT

STEEL BEAM GUARDRAIL, GALVANIZED

STA 287+50	TO	290+35	LT
STA 290+60	TO	293+67	LT
STA 294+40	TO	298+50	LT

REMOVAL AND DISPOSAL OF GUARDRAIL

STA 287+50	TO	290+35	LT
STA 290+67	TO	294+12	LT
STA 294+40	TO	296+27	LT
STA 297+80	TO	298+50	LT
TH 118		RT	12.5'

MANUFACTURED TERMINAL SECTION, FLARED

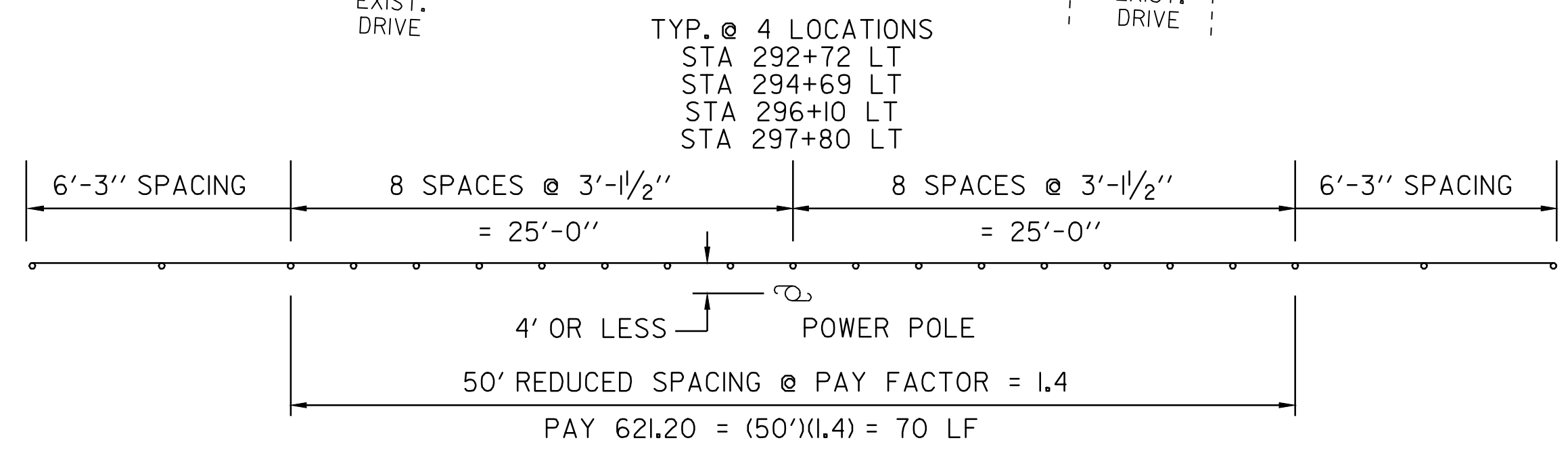
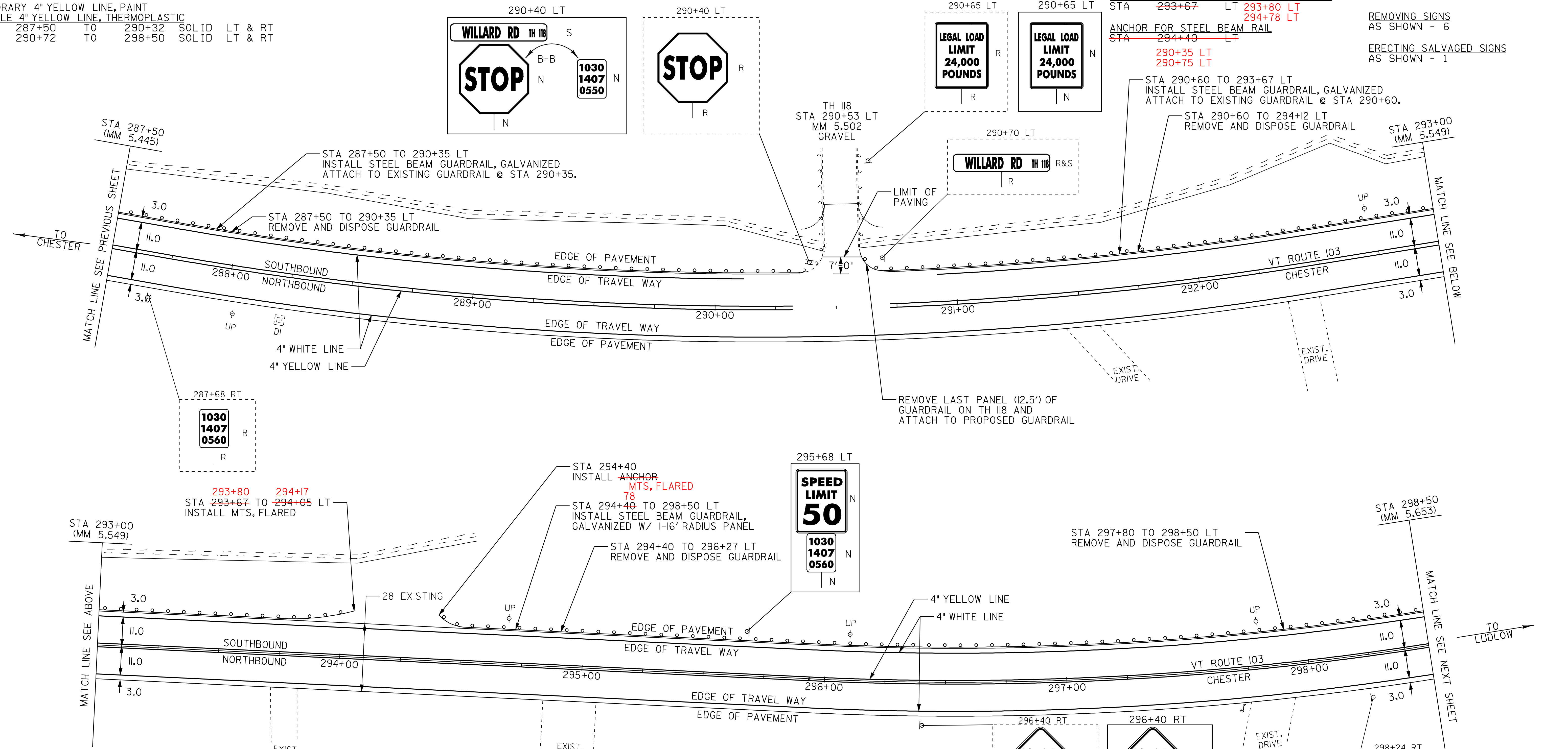
STA 293+67	LT	293+80	LT
STA 294+40	LT	294+78	LT

ANCHOR FOR STEEL BEAM RAIL

STA 290+35	LT
STA 290+75	LT

REMOVING SIGNS
AS SHOWN - 6

ERECTING SALVAGED SIGNS
AS SHOWN - 1



GUARD RAIL DETAIL
OBJECTS WITHIN 4 LF OF GUARDRAIL N.T.S.

- LEGEND**
- R = REMOVE EXISTING
 - S = SALVAGE
 - R&S = REMOVE AND SALVAGE
 - N = NEW
 - RET = RETAIN
 - B-B = BACK TO BACK
 - = NEW RAIL
 - - - = EXISTING RAIL

PAVING PROJECT LAYOUT #7

PROJECT: CHESTER-LUDLOW	PROJECT NO.: NH_2326(I)S
DESIGN FILE NAME: Z:\pav\2010\38\pb038.dgn	PLOT DATE: 16-OCT-2009 16:
IPARM FILE NAME: pb0381a07.1	SURVEY DATE: 01/05
SURVEYED BY: CLD_ENGINEERS, INC	DRAWN BY: MRS
SQUAD LEADER: CRB	SHEET: 21 OF 110
CLD_04-0396	