

TEMPORARY 4" WHITE LINE, PAINT  
 DURABLE 4" YELLOW LINE, THERMOPLASTIC  
 STA 265+50 TO 276+50 SOLID LT  
 STA 265+50 TO 276+50 SOLID RT

TEMPORARY 4" YELLOW LINE, PAINT  
 DURABLE 4" YELLOW LINE, THERMOPLASTIC  
 STA 265+50 TO 276+50 SOLID LT & RT

STEEL BEAM GUARDRAIL, GALVANIZED  
 STA 272+25 TO 274+32 LT  
 STA 274+60 TO 276+50 LT

MANUFACTURED TERMINAL SECTION, FLARED  
 STA 272+25 LT

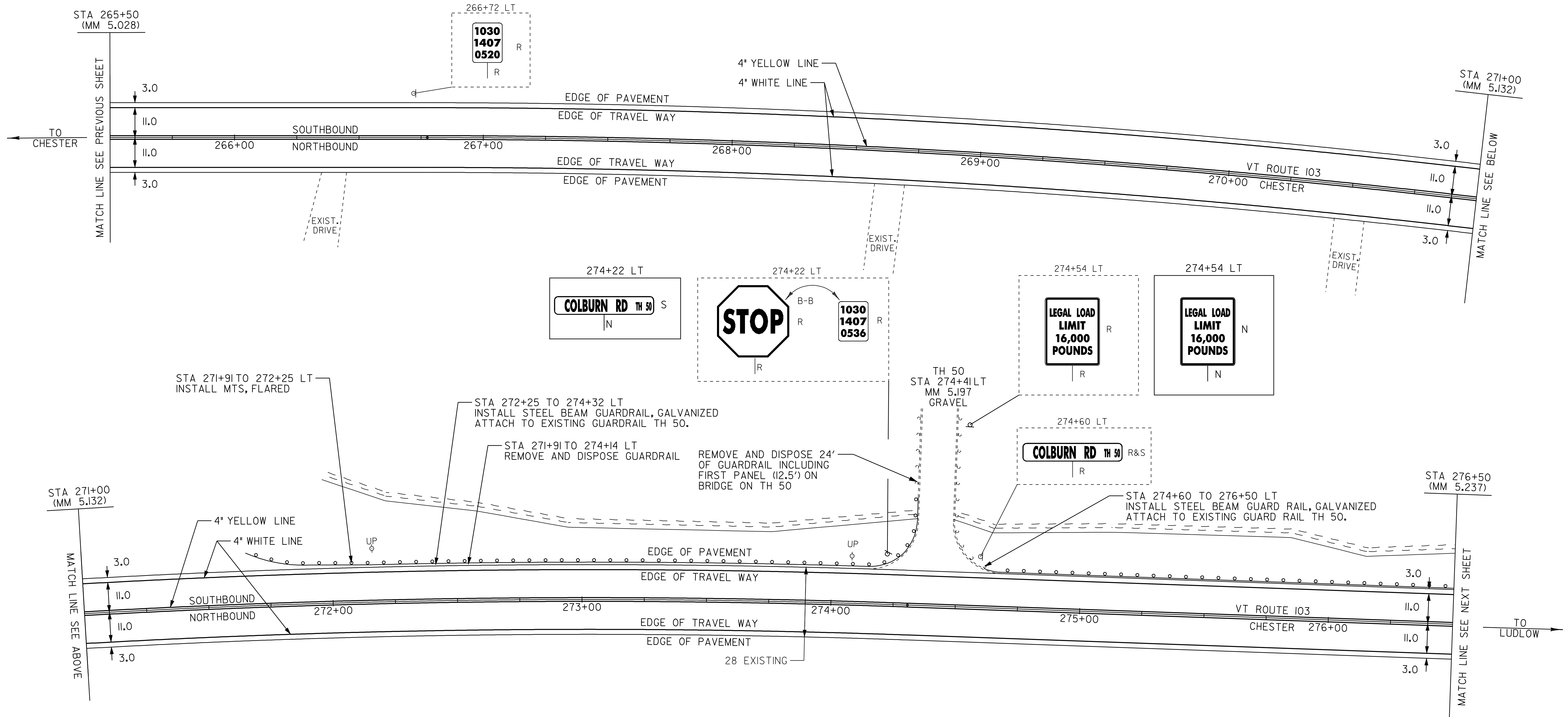
REMOVAL AND DISPOSAL OF GUARDRAIL  
 STA 272+16 TO 274+14 LT TH 50 LT 24'

REMOVING SIGNS  
 AS SHOWN - 5

ERECTING SALVAGED SIGNS  
 AS SHOWN - 1

ANCHOR FOR STEEL BEAM RAIL

274+25 LT  
 274+60 LT



STA 271+91 TO 272+25 LT  
 INSTALL MTS, FLARED

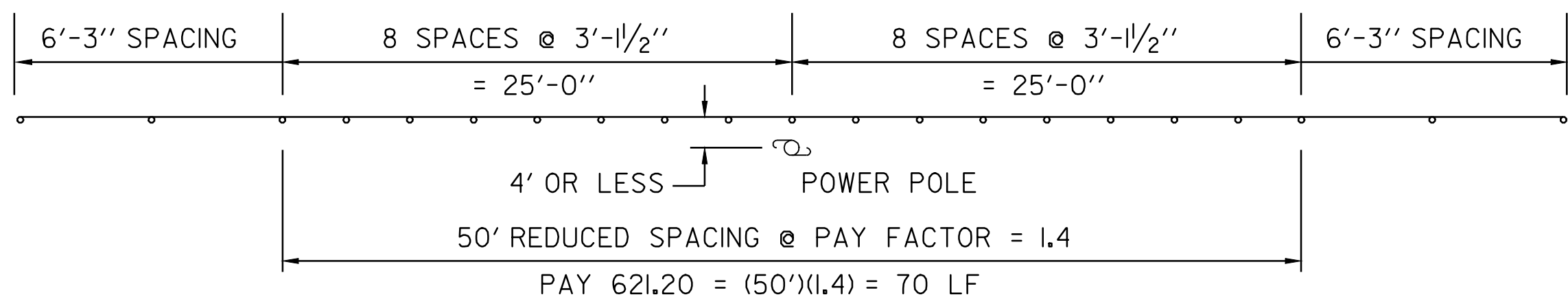
STA 272+25 TO 274+32 LT  
 INSTALL STEEL BEAM GUARDRAIL, GALVANIZED  
 ATTACH TO EXISTING GUARDRAIL TH 50.

STA 271+91 TO 274+14 LT  
 REMOVE AND DISPOSE GUARDRAIL

REMOVE AND DISPOSE 24'  
 OF GUARDRAIL INCLUDING  
 FIRST PANEL (12.5') ON  
 BRIDGE ON TH 50

STA 274+60 TO 276+50 LT  
 INSTALL STEEL BEAM GUARD RAIL, GALVANIZED  
 ATTACH TO EXISTING GUARD RAIL TH 50.

TYP. @ 2 LOCATIONS  
 STA. 272+16 LT  
 STA. 274+08 LT



GUARD RAIL DETAIL  
 OBJECTS WITHIN 4 LF OF GUARDRAIL N.T.S.

- LEGEND
- R = REMOVE EXISTING
  - S = SALVAGE
  - R&S = REMOVE AND SALVAGE
  - N = NEW
  - RET = RETAIN
  - B-B = BACK TO BACK
  - = NEW RAIL
  - = EXISTING RAIL

**PAVING  
 PROJECT  
 LAYOUT #5**

PROJECT: _CHESTER-LUDLOW	PROJECT NO.: _NH_2326(1)S_
DESIGN FILE NAME: Zpave\Qlb038\pb038.dgn	PLOT DATE: 16-OCT-2009 16:
IPARM FILE NAME: pb0381a05.1	SURVEY DATE: 01/05
SURVEYED BY: CLD_ENGINEERS, INC	SQUAD LEADER: CRB
CLD_04-0396	DRAWN BY: MRS
	SHEET: 19 OF 110