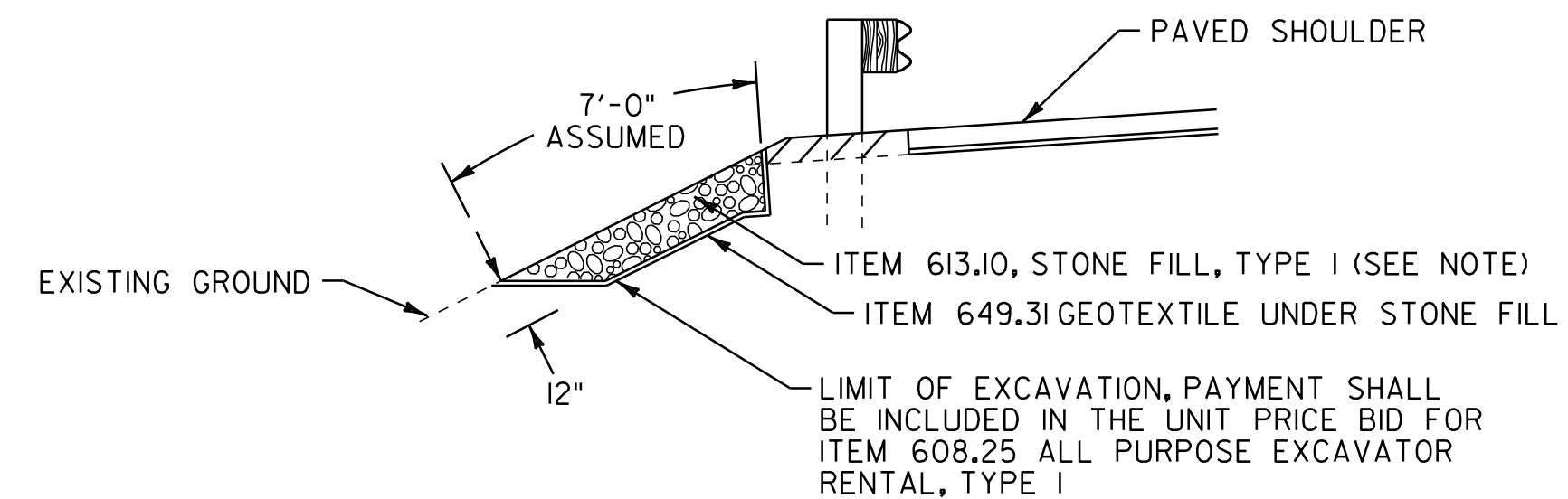


GORE MARKING DETAIL
SEE LAYOUT SHEETS FOR LOCATIONS



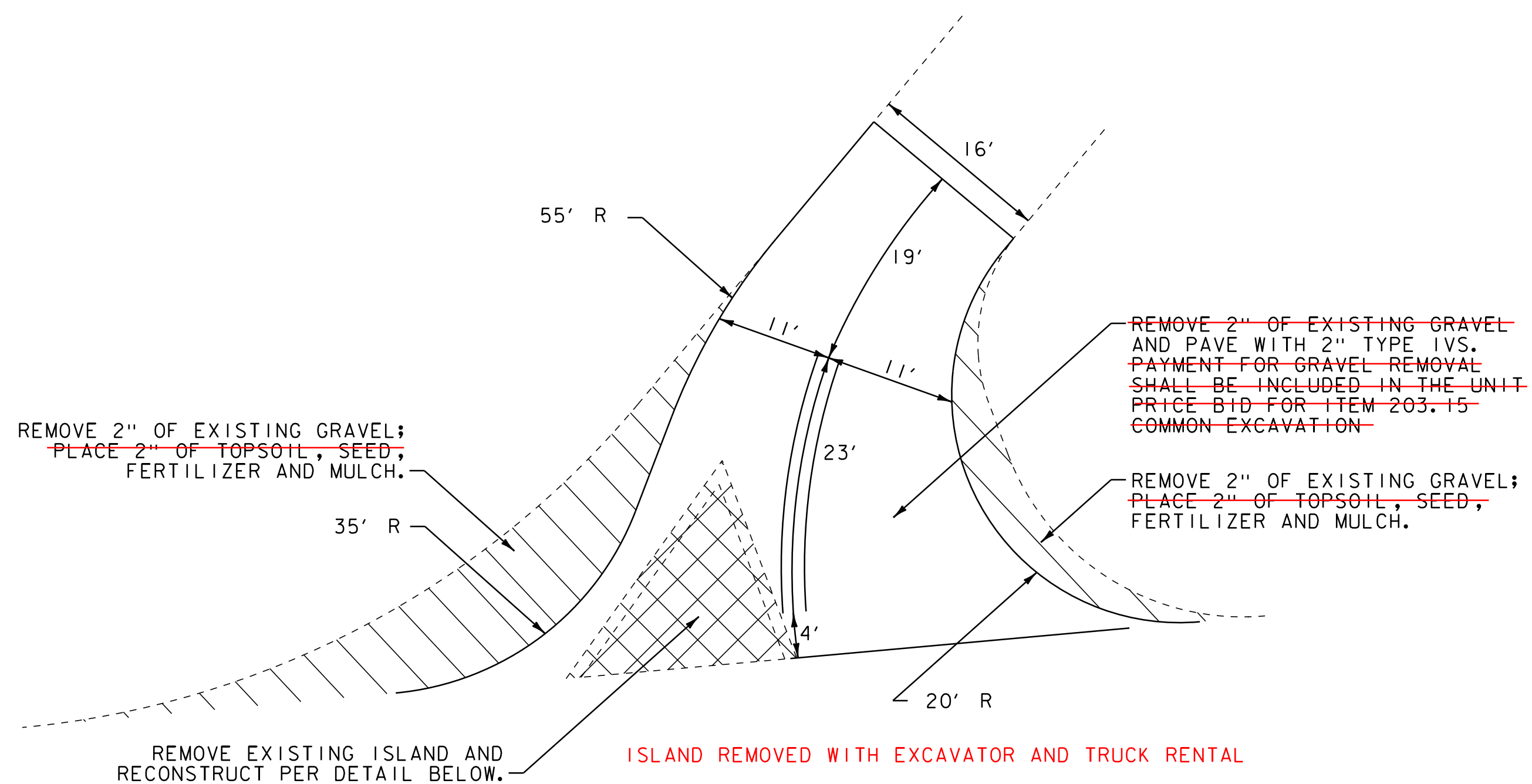
SLOPE EROSION REPAIR DETAIL

(ASSUME A 7' WIDTH BY 6' LENGTH UNLESS OTHERWISE NOTED)

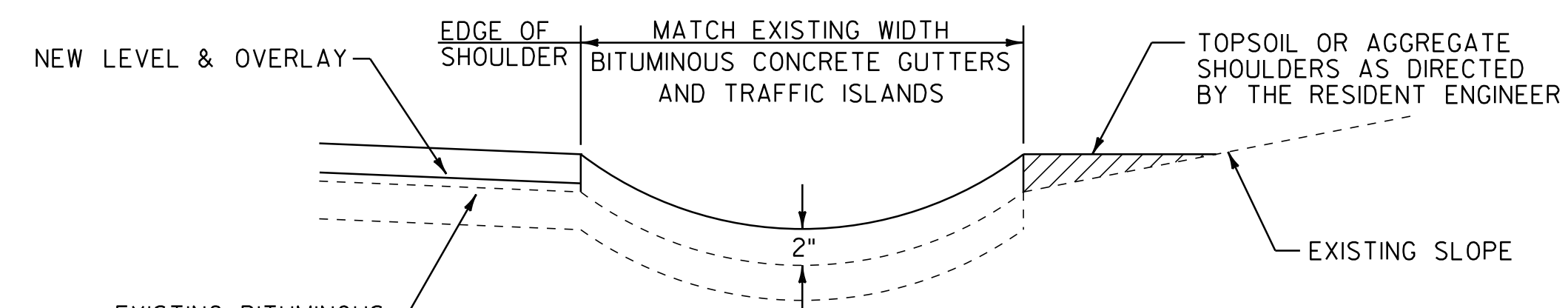
GLOVER	STA. 206+41, RT STA. 206+42, LT STA. 236+12, RT STA. 238+63, RT STA. 266+92 TO 267+09, LT (17 FT)
BARTON	STA. 17+80, LT

NOTE:

AN ESTIMATED QUANTITY OF ITEM 613.11 STONE FILL, TYPE II HAS BEEN INCLUDED FOR USE AS DIRECTED BY THE RESIDENT ENGINEER. IF ITEM 613.11 IS NECESSARY, THE ADDITIONAL EXCAVATION DEPTH REQUIRED WILL BE PAID AS ITEM 608.25 ALL PURPOSE EXCAVATOR RENTAL, TYPE I.

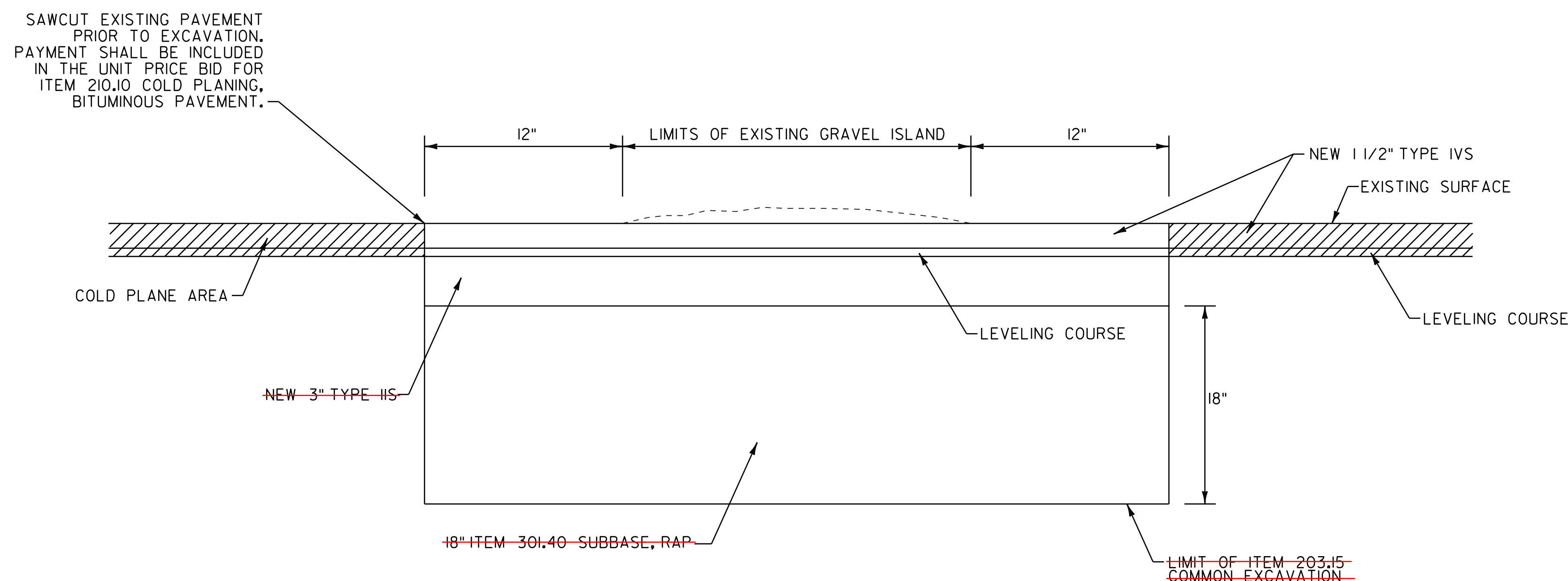


T.H. 63 - BAILEY LANE RECONFIGURATION
PLAN VIEW
GLOVER STA. 335+09, LT.



BITUMINOUS CONCRETE GUTTER DETAIL

BARTON:	STA. 78+58 TO 79+77, RT (7.5' WIDE)
	STA. 79+77 TO 81+37, RT (3' WIDE) 8'
	STA. 81+97 TO 83+88, RT (4' WIDE) 8'
	STA. 83+88 TO 85+94, RT (7' WIDE)
	STA. 86+25 TO 87+19, RT (8.5' WIDE)
	STA. 87+39 TO 90+45, RT (8' WIDE)



ISLAND REMOVAL DETAIL
T.H. 63 - BAILEY LANE
GLOVER STA. 335+02, LT.

NOT TO SCALE

MISCELLANEOUS
DETAIL
SHEET #2

PROJECT NAME: GLOVER - BARTON
PROJECT NUMBER: STP 2318(I)

FILE NAME: p01b034.dgn
PROJECT LEADER: JLL
DESIGNED BY: STANTEC
IPARM FILE: p01b034md02.i

PLOT DATE: 28-NOV-2012 15:0
DRAWN BY: STANTEC
CHECKED BY: STANTEC
SHEET 59 OF 60

