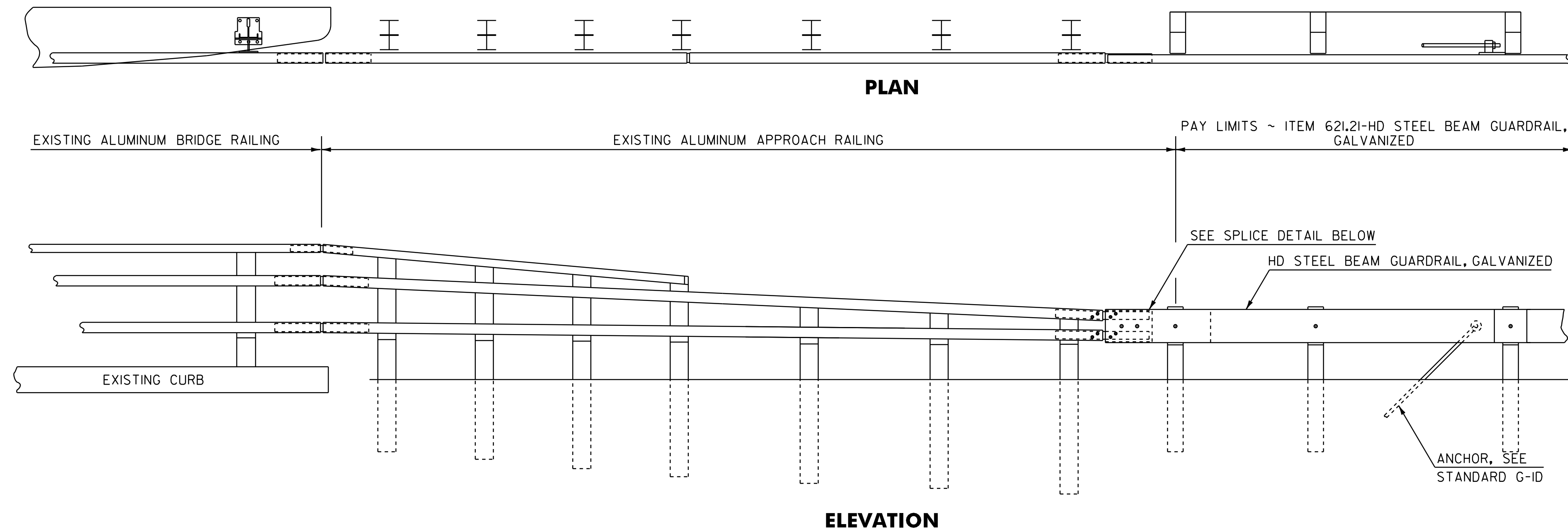
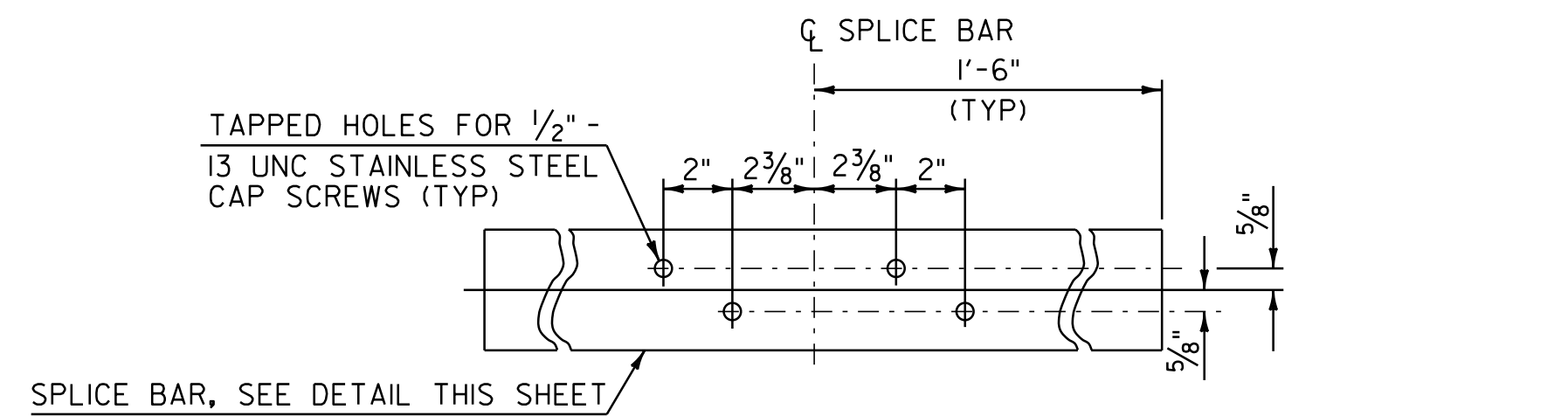


NOTES

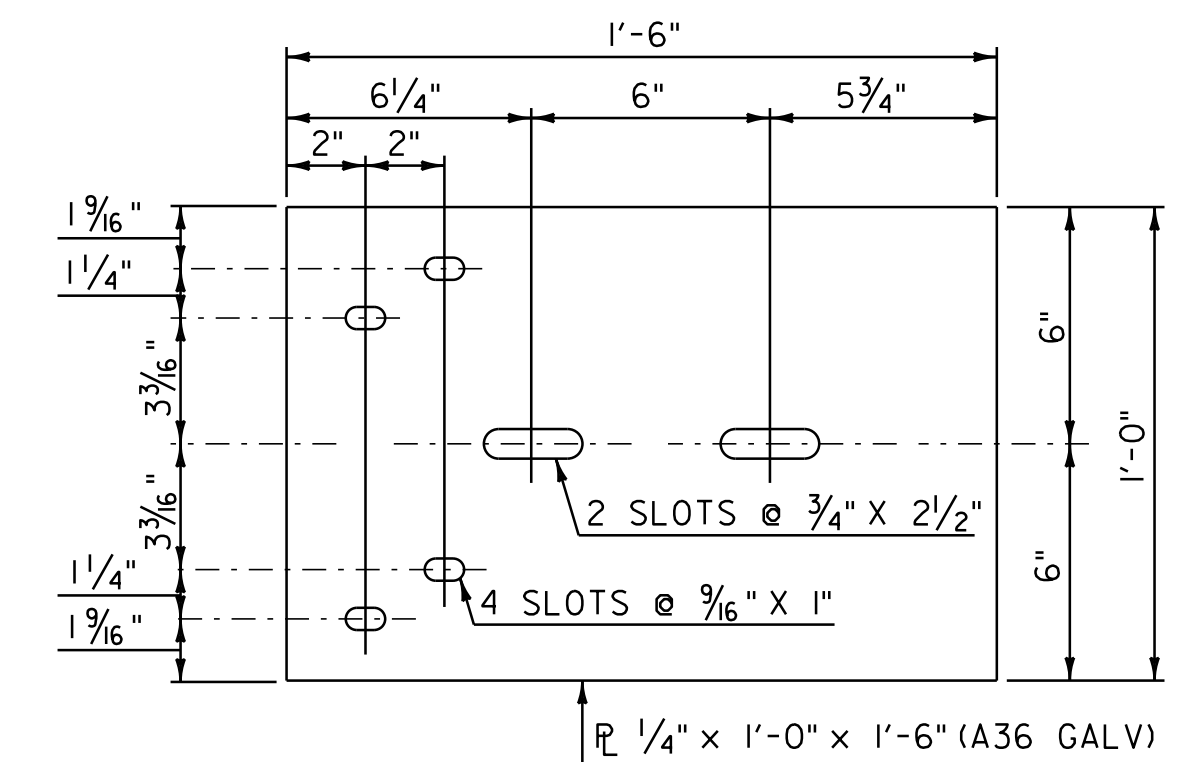
1. ALL STRUCTURAL STEEL SHALL BE ASTM A36 AND GALVANIZED AFTER FABRICATION.
2. ANCHOR BOLTS, WASHERS AND HEAVY HEX NUTS MAY BE ANY OF THE FOLLOWING:
 - A. ASTM A449 GALVANIZED, OR
 - B. AASHTO M164 (ASTM A325) GALVANIZED
 - C. BOLTS AND WASHERS OF STAINLESS STEEL ASTM A276, TYPE 304 (MINIMUM ULTIMATE STRENGTH OF 100,000 PSI) WITH STAINLESS STEEL NUTS OF ASTM A194, GRADE 8NA.
3. ALL ITEMS NOT OTHERWISE INDICATED SHALL MEET THE SPECIFICATION REQUIREMENTS OF THE STANDARD SHEETS ON WHICH THEY ARE DETAILED.
4. SEE STANDARD G-1 FOR STEEL BEAM GUARDRAIL DETAILS.
5. THE COST OF ALL MATERIALS AND LABOR FOR THE SPLICE BETWEEN THE EXISTING ALUMINUM APPROACH RAILING AND THE HD STEEL BEAM GUARDRAIL, GALVANIZED SHALL BE INCLUDED IN THE UNIT PRICE BID FOR ITEM 621.21 HD STEEL BEAM GUARDRAIL, GALVANIZED.



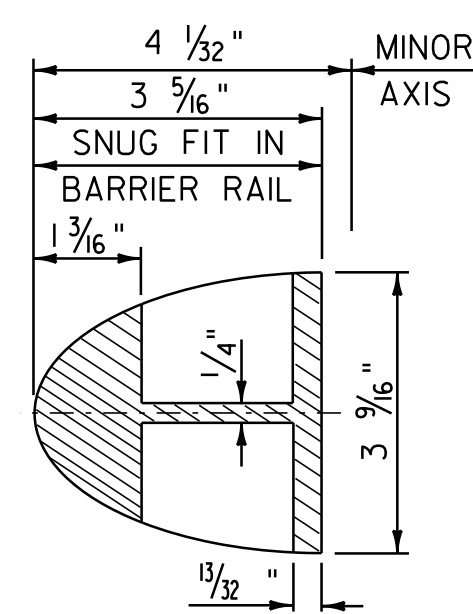
DETAIL FOR CONNECTING EXISTING ALUMINUM APPROACH RAIL TO PROPOSED HD STEEL BEAM GUARDRAIL, GALVANIZED AT BRIDGE NO. 18



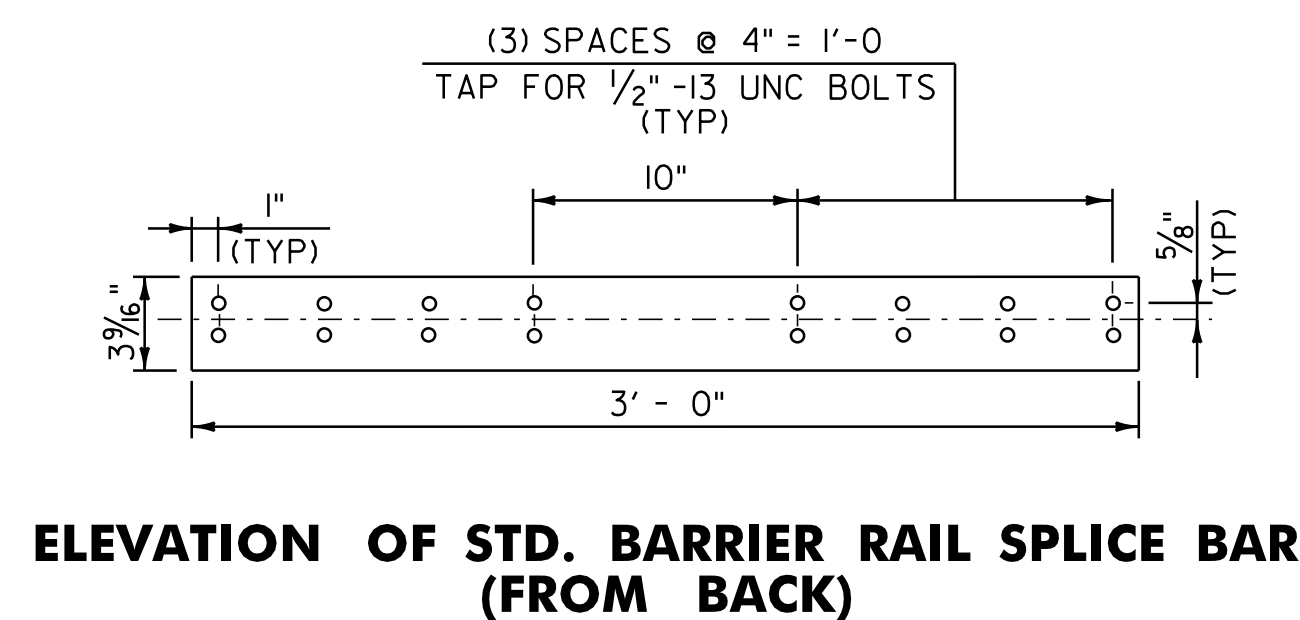
SPLICE BAR DETAIL (BACK SIDE VIEW)



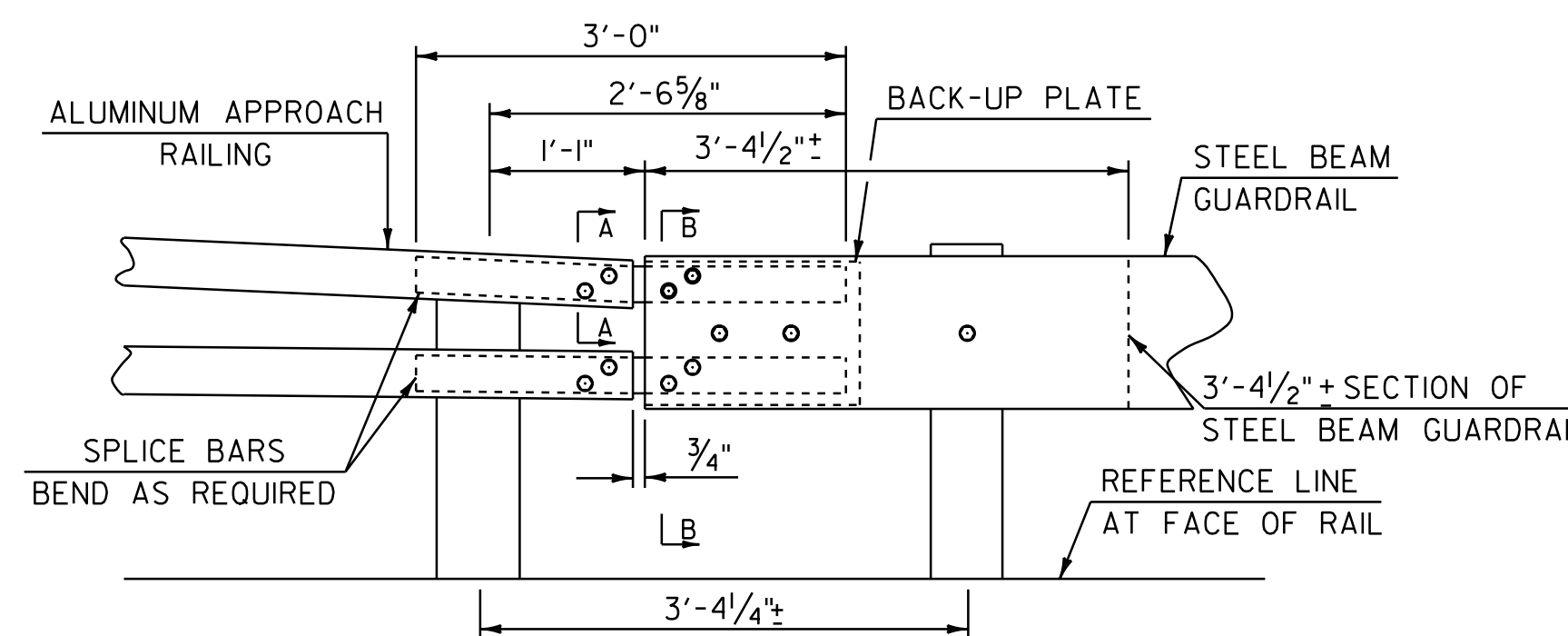
BACK-UP PLATE DETAIL



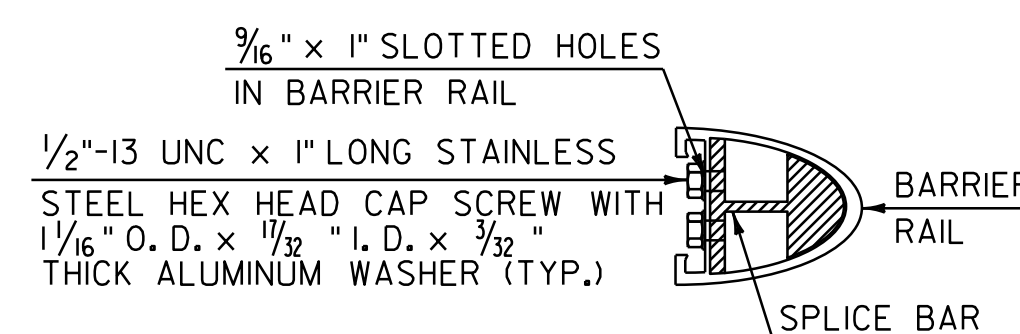
BARRIER RAIL SPLICE SECTION



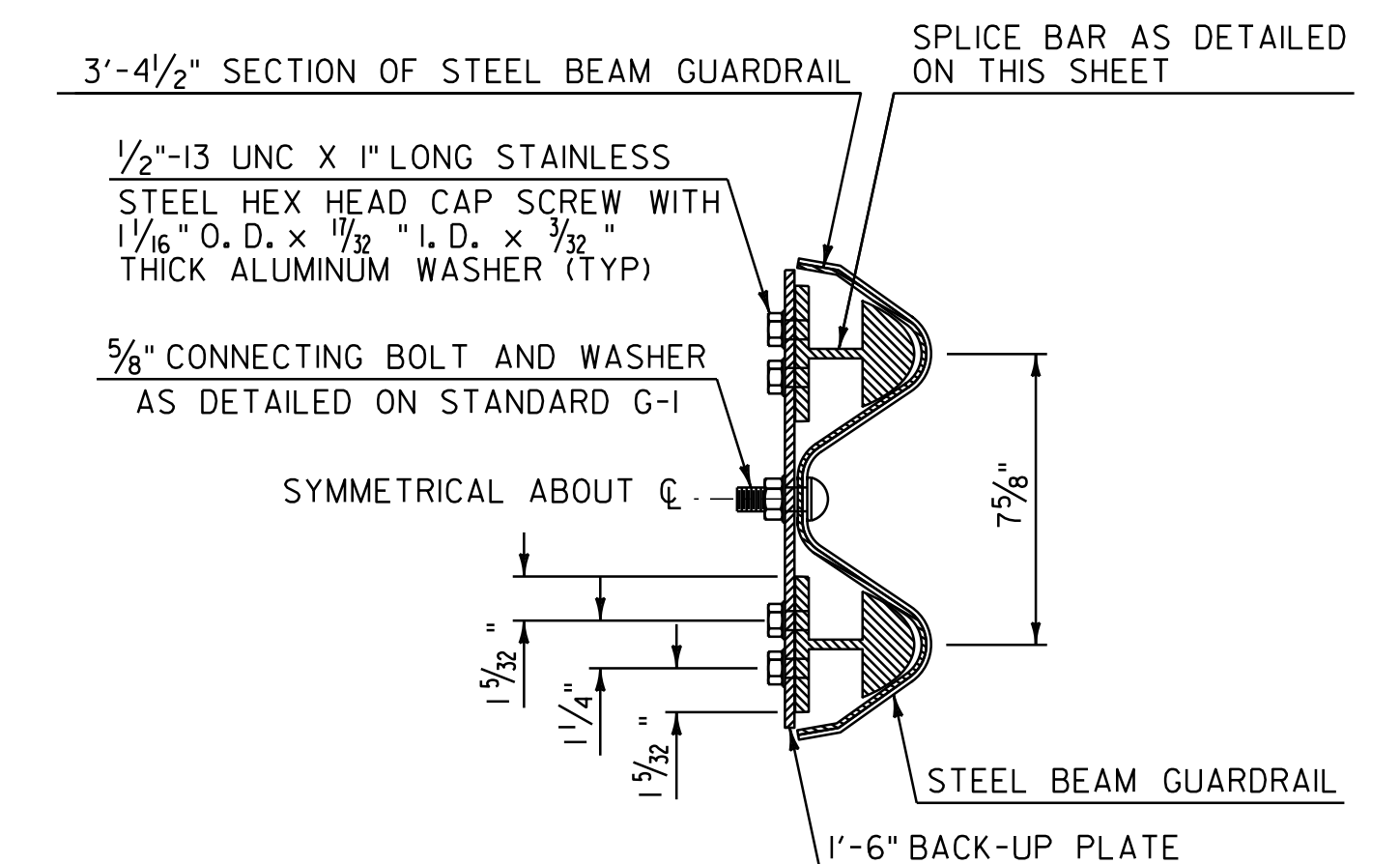
ELEVATION OF STD. BARRIER RAIL SPLICE BAR (FROM BACK)



SPLICE DETAIL



SECTION A - A



SECTION B - B

NOT TO SCALE

**GUARDRAIL
DETAIL
SHEET #2**



PROJECT NAME: GLOVER - BARTON
PROJECT NUMBER: STP 2318(I)

FILE NAME: p01b034.dgn
PROJECT LEADER: JLL
DESIGNED BY: STANTEC
IPARM FILE: p01b034gds02.i

PLOT DATE: 28-NOV-2012 15:0
DRAWN BY: STANTEC
CHECKED BY: STANTEC
SHEET 56 OF 60