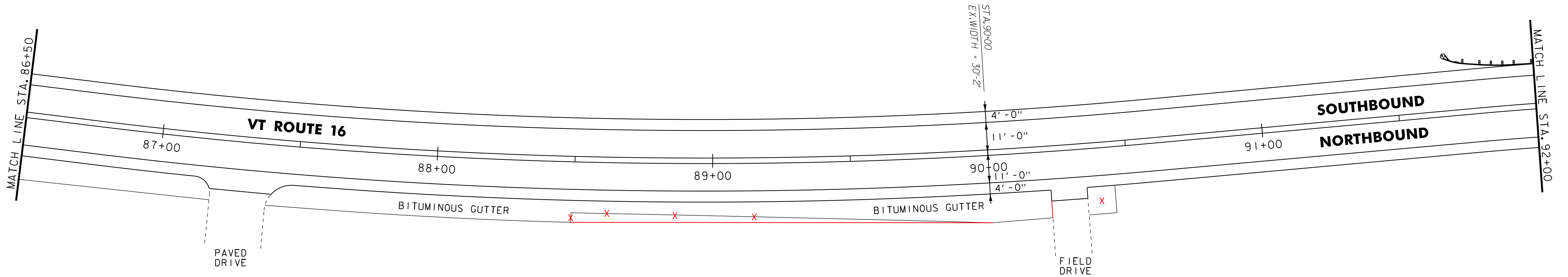


616.47 BITUMINOUS CONCRETE GUTTERS AND TRAFFIC ISLANDS
 STA. 86+50 TO 87+19, RT 17
 STA. 87+39 TO 90+45, RT 39
 (SEE DETAIL ON MISCELLANEOUS DETAIL SHEET #2)

621.50 MANUFACTURED TERMINAL SECTION, FLARED
 STA. ~~91+67.5 TO 92+00.0, LT~~
~~91+52 TO 91+89.5, LT~~
 621.80 REMOVAL AND DISPOSAL OF GUARDRAIL
 STA. 91+62 TO 92+00, LT

646.402 DURABLE 4 INCH WHITE LINE, THERMOPLASTIC
 (ALL LINES WILL INCLUDE EDGE LINE BREAKS AND
 RADII FOR SIDE ROADS)
 STA. 86+50 TO 92+00, SOLID LT & RT
 646.412 DURABLE 4 INCH YELLOW LINE, THERMOPLASTIC
 (ALL LINES WILL INCLUDE @ BREAKS FOR SIDE ROADS)
 STA. 86+50 TO 92+00, SOLID LT & RT

646.602 TEMPORARY 4 INCH WHITE LINE, PAINT
 (ALL LINES WILL INCLUDE EDGE LINE BREAKS AND
 RADII FOR SIDE ROADS)
 STA. 86+50 TO 92+00, SOLID LT & RT
 646.612 TEMPORARY 4 INCH YELLOW LINE, PAINT
 (ALL LINES WILL INCLUDE @ BREAKS FOR SIDE ROADS)
 STA. 86+50 TO 92+00, SOLID LT & RT



**END STP 2318(1) VT ROUTE 16
 BARTON STA. 93+03.36 = MM 1.762**

T.H. 4
 ROARING BROOK ROAD
 MM 1.769 = STA. 93+40
 (PAVED)

604.412 OR 604.415 REHAB.
 DIS, CBS OR MHS, CLASS I OR II
 STA. 92+77, RT

621.20 STEEL BEAM GUARDRAIL, GALVANIZED
 STA. ~~92+05.0 TO 93+12.0, LT~~
 (CONNECT TO EXISTING SB GUARDRAIL)
~~91+89.5 TO 93+16.5~~

621.50 MANUFACTURED TERMINAL SECTION, FLARED
 STA. ~~92+00.0 TO 92+05.0, LT~~
~~91+52 TO 91+89.5~~

621.80 REMOVAL AND DISPOSAL OF GUARDRAIL
 STA. 92+00 TO 93+12, LT

646.402 DURABLE 4 INCH WHITE LINE, THERMOPLASTIC
 (ALL LINES WILL INCLUDE EDGE LINE BREAKS AND
 RADII FOR SIDE ROADS)
 STA. 92+00 TO 93+03, SOLID LT & RT

646.412 DURABLE 4 INCH YELLOW LINE, THERMOPLASTIC
 (ALL LINES WILL INCLUDE @ BREAKS FOR SIDE ROADS)
 STA. 92+00 TO 93+03, SOLID LT & RT

621.60 ANCHOR FOR STEEL BEAM RAIL
 STA. 93+16.5, LT

646.602 TEMPORARY 4 INCH WHITE LINE, PAINT
 (ALL LINES WILL INCLUDE EDGE LINE BREAKS AND
 RADII FOR SIDE ROADS)
 STA. 92+00 TO 93+03, SOLID LT & RT

646.612 TEMPORARY 4 INCH YELLOW LINE, PAINT
 (ALL LINES WILL INCLUDE @ BREAKS FOR SIDE ROADS)
 STA. 92+00 TO 93+03, SOLID LT & RT

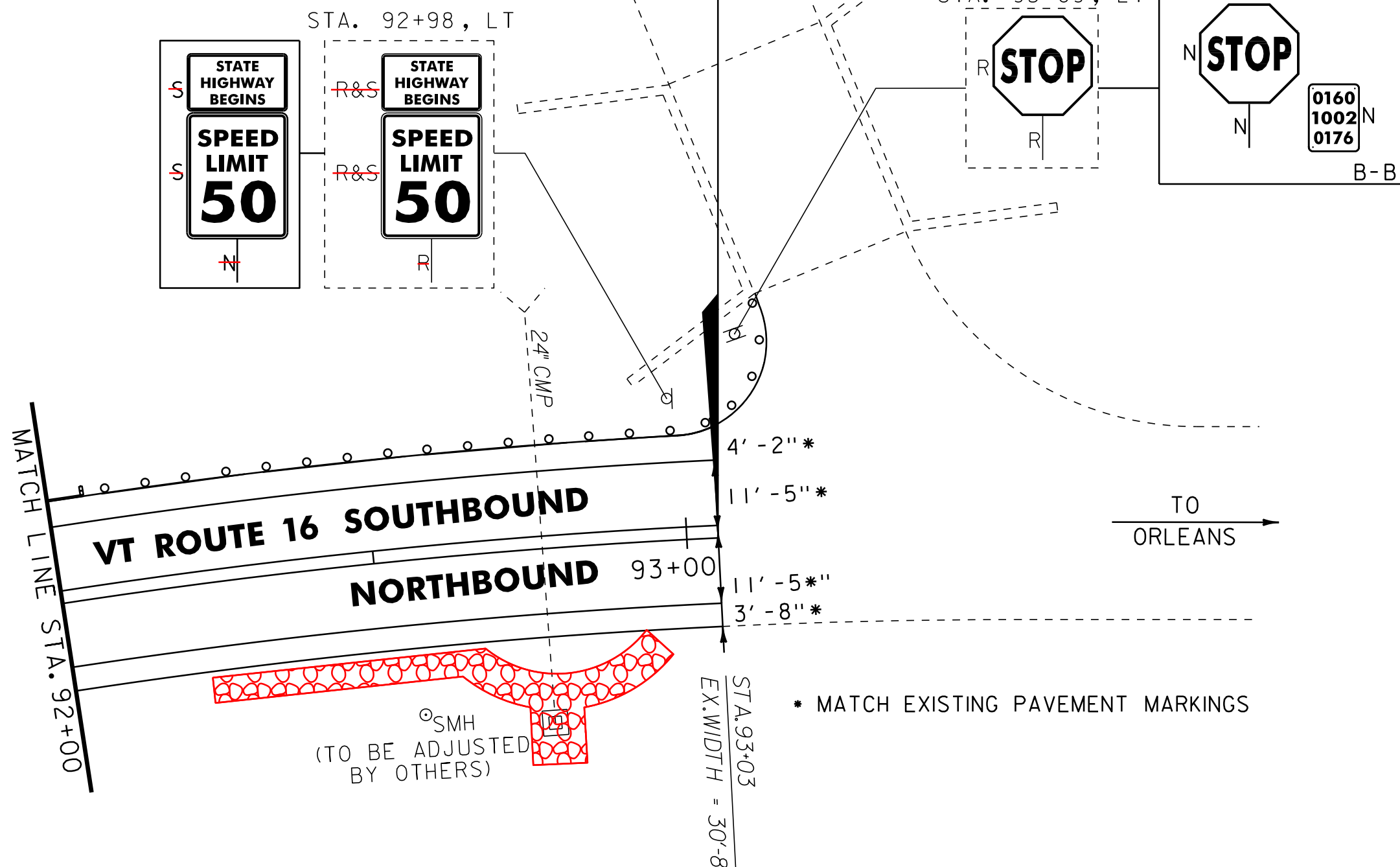
619.17 YIELDING MARKER POSTS
 STA. 92+70, LT & RT

675.50 REMOVING SIGNS
 AS SHOWN - 31

675.60 ERECTING SALVAGED SIGNS
 AS SHOWN - 2

613.10 STONE FILL, TYPE I
 STA. 92+25 TO 92+96, RT

REMOVED AND REPLACED 5/11
 UNDER STATEWIDE SIGN PROJECT



- NOTES:
1. FOR LEGENDS, SEE LAYOUT SHEET #1.
 2. ALL EXISTING SIGNS NOT SHOWN SHALL BE RETAINED.

NOT TO SCALE

**PROJECT
 LAYOUT
 SHEET #31**



PROJECT NAME: GLOVER - BARTON
 PROJECT NUMBER: STP 2318(1)

FILE NAME: p01b034.dgn
 PROJECT LEADER: JLL
 DESIGNED BY: STANTEC
 IPARM FILE: p01b034I32I

PLOT DATE: 28-NOV-2012 15:0
 DRAWN BY: STANTEC
 CHECKED BY: STANTEC
 SHEET 43 OF 60