

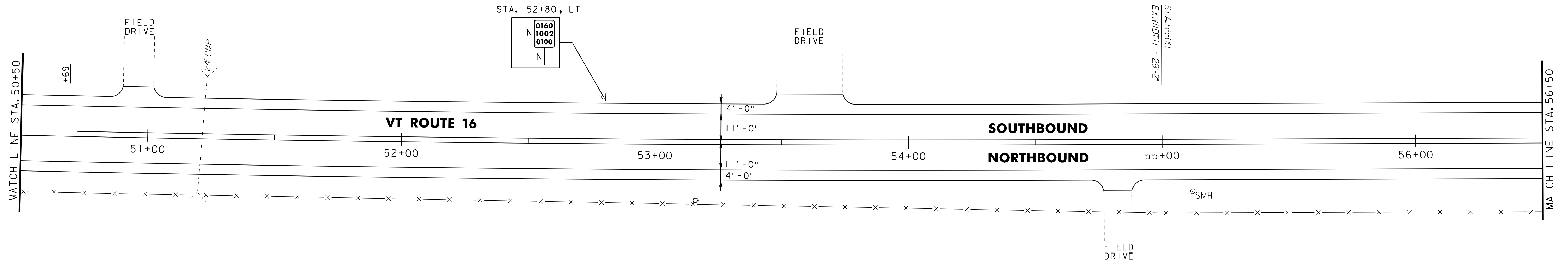
646.402 DURABLE 4 INCH WHITE LINE, THERMOPLASTIC
 (ALL LINES WILL INCLUDE EDGE LINE BREAKS AND
 RADII FOR SIDE ROADS)
 STA. 50+50 TO 56+50, SOLID LT & RT

646.412 DURABLE 4 INCH YELLOW LINE, THERMOPLASTIC
 (ALL LINES WILL INCLUDE C BREAKS FOR SIDE ROADS)
 STA. 50+50 TO 50+69, DASHED LT, SOLID RT
 STA. 50+69 TO 56+50, SOLID LT & RT

646.602 TEMPORARY 4 INCH WHITE LINE, PAINT
 (ALL LINES WILL INCLUDE EDGE LINE BREAKS AND
 RADII FOR SIDE ROADS)
 STA. 50+50 TO 56+50, SOLID LT & RT

646.612 TEMPORARY 4 INCH YELLOW LINE, PAINT
 (ALL LINES WILL INCLUDE C BREAKS FOR SIDE ROADS)
 STA. 50+50 TO 50+69, DASHED LT, SOLID RT
 STA. 50+69 TO 56+50, SOLID LT & RT

619.17 YIELDING MARKER POSTS
 STA. 51+30, LT



NOTES:
 1. FOR LEGENDS, SEE LAYOUT SHEET #1.
 2. ALL EXISTING SIGNS NOT SHOWN SHALL BE RETAINED.

NOT TO SCALE



**PROJECT
 LAYOUT
 SHEET #26**

PROJECT NAME: GLOVER - BARTON
 PROJECT NUMBER: STP 2318(I)

FILE NAME: p01b034.dgn
 PROJECT LEADER: JLL
 DESIGNED BY: STANTEC
 IPARM FILE: p01b034I26.i

PLOT DATE: 28-NOV-2012 15:0
 DRAWN BY: STANTEC
 CHECKED BY: STANTEC
 SHEET 38 OF 60