

646.402 DURABLE 4 INCH WHITE LINE, THERMOPLASTIC
 (ALL LINES WILL INCLUDE EDGE LINE BREAKS AND
 RADII FOR SIDE ROADS)
 STA. 148+36.8 TO 152+50, SOLID LT & RT

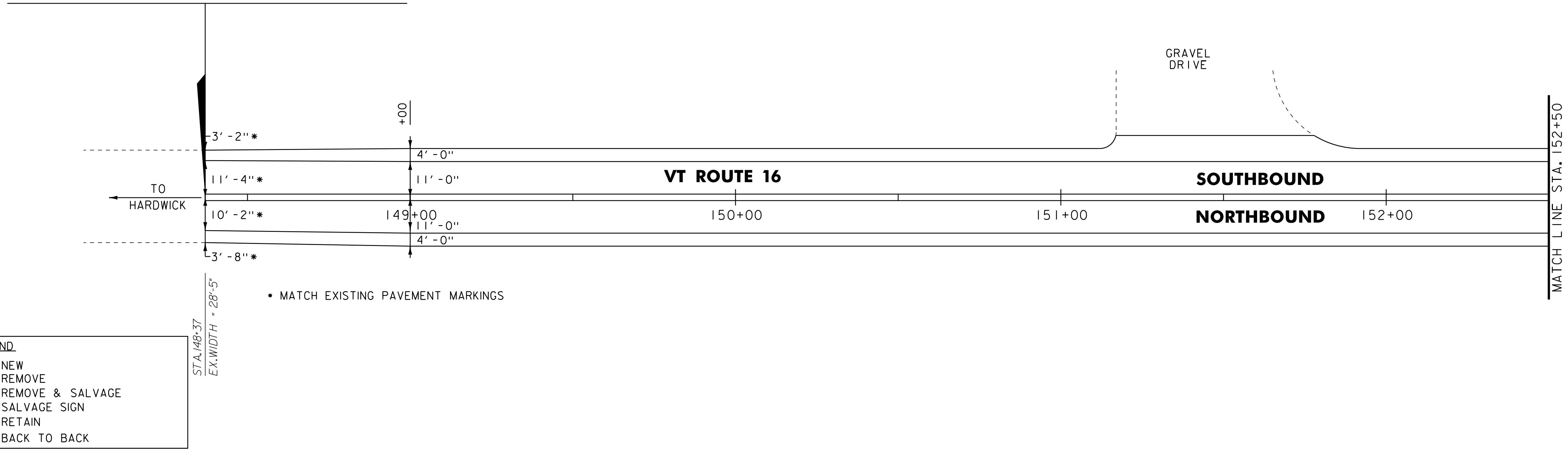
646.412 DURABLE 4 INCH YELLOW LINE, THERMOPLASTIC
 (ALL LINES WILL INCLUDE @ BREAKS FOR SIDE ROADS)
 STA. 148+36.8 TO 152+50, SOLID LT & RT

646.602 TEMPORARY 4 INCH WHITE LINE, PAINT
 (ALL LINES WILL INCLUDE EDGE LINE BREAKS AND
 RADII FOR SIDE ROADS)
 STA. 148+36.8 TO 152+50, SOLID LT & RT

646.612 TEMPORARY 4 INCH YELLOW LINE, PAINT
 (ALL LINES WILL INCLUDE @ BREAKS FOR SIDE ROADS)
 STA. 148+36.8 TO 152+50, SOLID LT & RT

619.17 YEILDING MARKER POSTS
 STA. 152+80 LT & RT

**BEGIN STP 2318(1) VT ROUTE 16
 GLOVER STA. 148+36.80 = MM 2.810**



UTILITY LEGEND	
	= EXISTING DI
	= EXISTING SIGN POST
	= EXISTING TELEPHONE MANHOLE
	= EXISTING SEWER SHUTOFF
	= EXISTING SEWER MANHOLE
	= EXISTING MAILBOX
	= EXISTING UTILITY POLE
	= EXISTING GUARDRAIL
	= EXISTING CULVERT
	= EXISTING STONE/CONCRETE HEADWALL
	= EXISTING FENCE
	= EXISTING STONE WALL

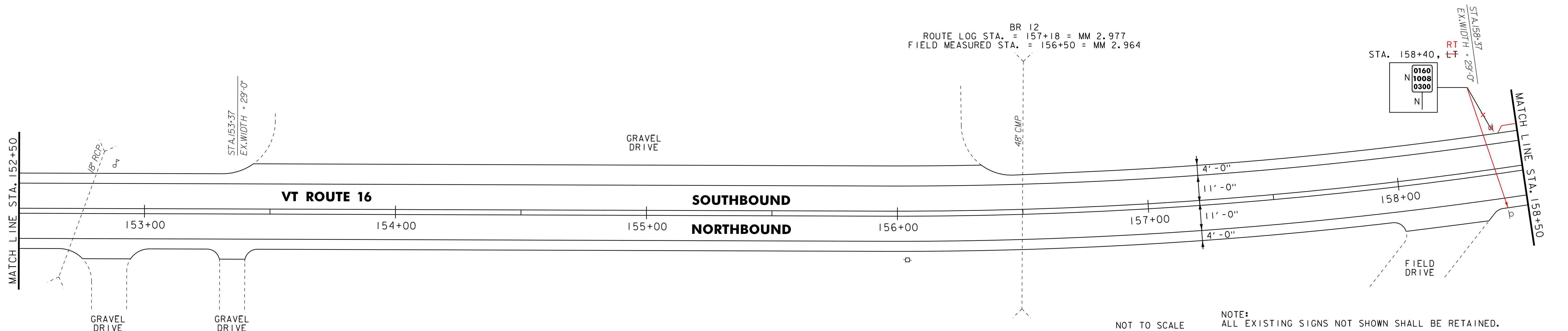
SIGN LEGEND	
N	= NEW
R	= REMOVE
R&S	= REMOVE & SALVAGE
S	= SALVAGE SIGN
RET	= RETAIN
B-B	= BACK TO BACK

646.402 DURABLE 4 INCH WHITE LINE, THERMOPLASTIC
 (ALL LINES WILL INCLUDE EDGE LINE BREAKS AND
 RADII FOR SIDE ROADS)
 STA. 152+50 TO 158+50, SOLID LT & RT

646.412 DURABLE 4 INCH YELLOW LINE, THERMOPLASTIC
 (ALL LINES WILL INCLUDE @ BREAKS FOR SIDE ROADS)
 STA. 152+50 TO 158+50, SOLID LT & RT

646.602 TEMPORARY 4 INCH WHITE LINE, PAINT
 (ALL LINES WILL INCLUDE EDGE LINE BREAKS AND
 RADII FOR SIDE ROADS)
 STA. 152+50 TO 158+50, SOLID LT & RT

646.612 TEMPORARY 4 INCH YELLOW LINE, PAINT
 (ALL LINES WILL INCLUDE @ BREAKS FOR SIDE ROADS)
 STA. 152+50 TO 158+50, SOLID LT & RT



NOT TO SCALE

NOTE:
 ALL EXISTING SIGNS NOT SHOWN SHALL BE RETAINED.



**PROJECT
 LAYOUT
 SHEET #1**

PROJECT NAME: GLOVER - BARTON
 PROJECT NUMBER: STP 2318(1)

FILE NAME: p01b034.dgn
 PROJECT LEADER: JLL
 DESIGNED BY: STANTEC
 IPARM FILE: p01b034I01.i

PLOT DATE: 28-NOV-2012 15:00
 DRAWN BY: STANTEC
 CHECKED BY: STANTEC
 SHEET 13 OF 60