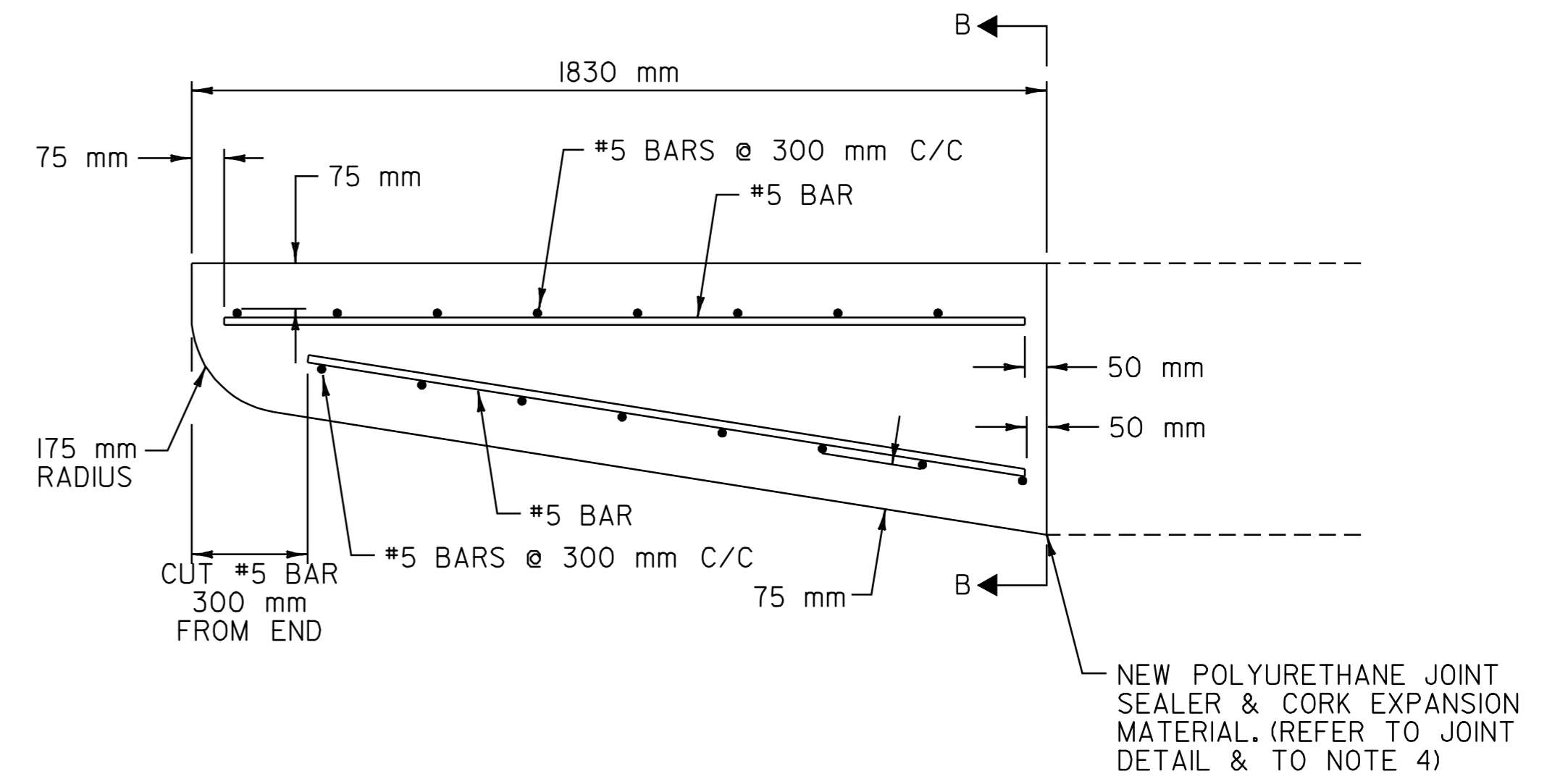
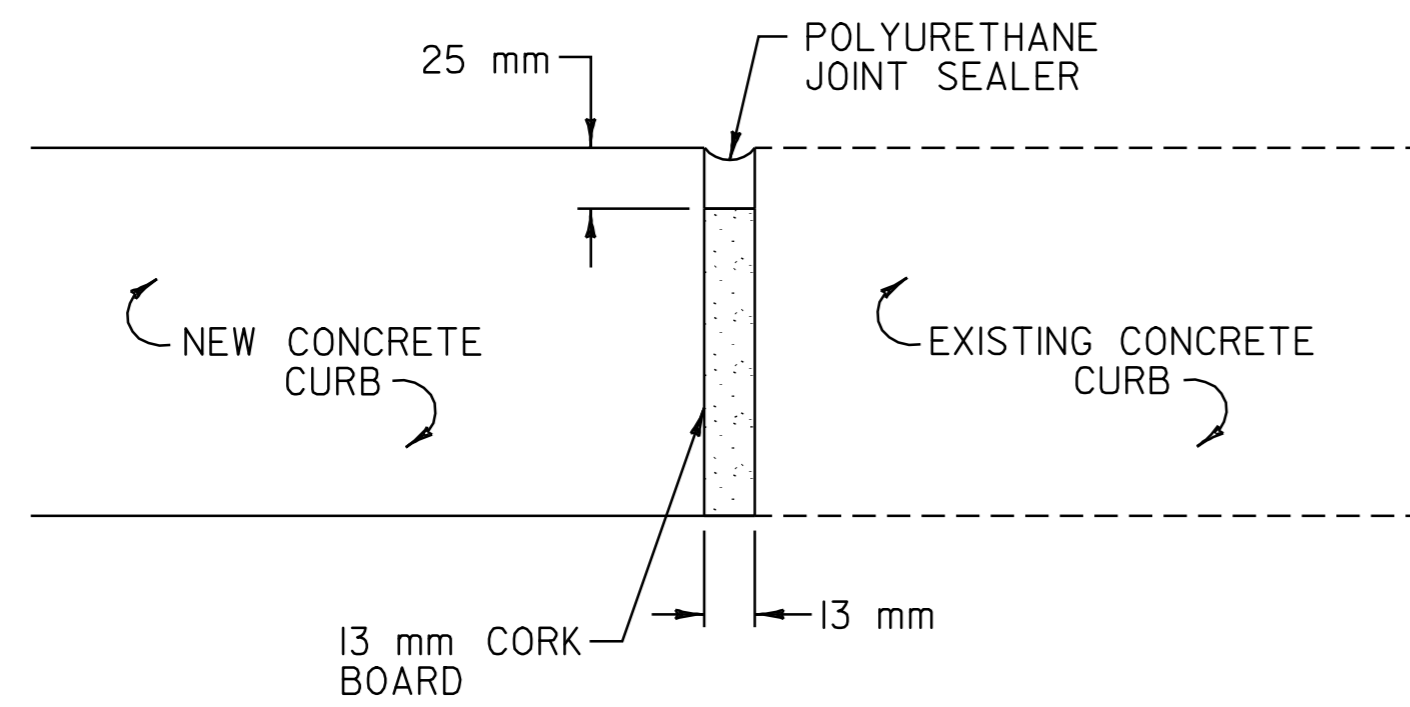


**NEW CURB END TREATMENT
ELEVATION VIEW**
N.T.S

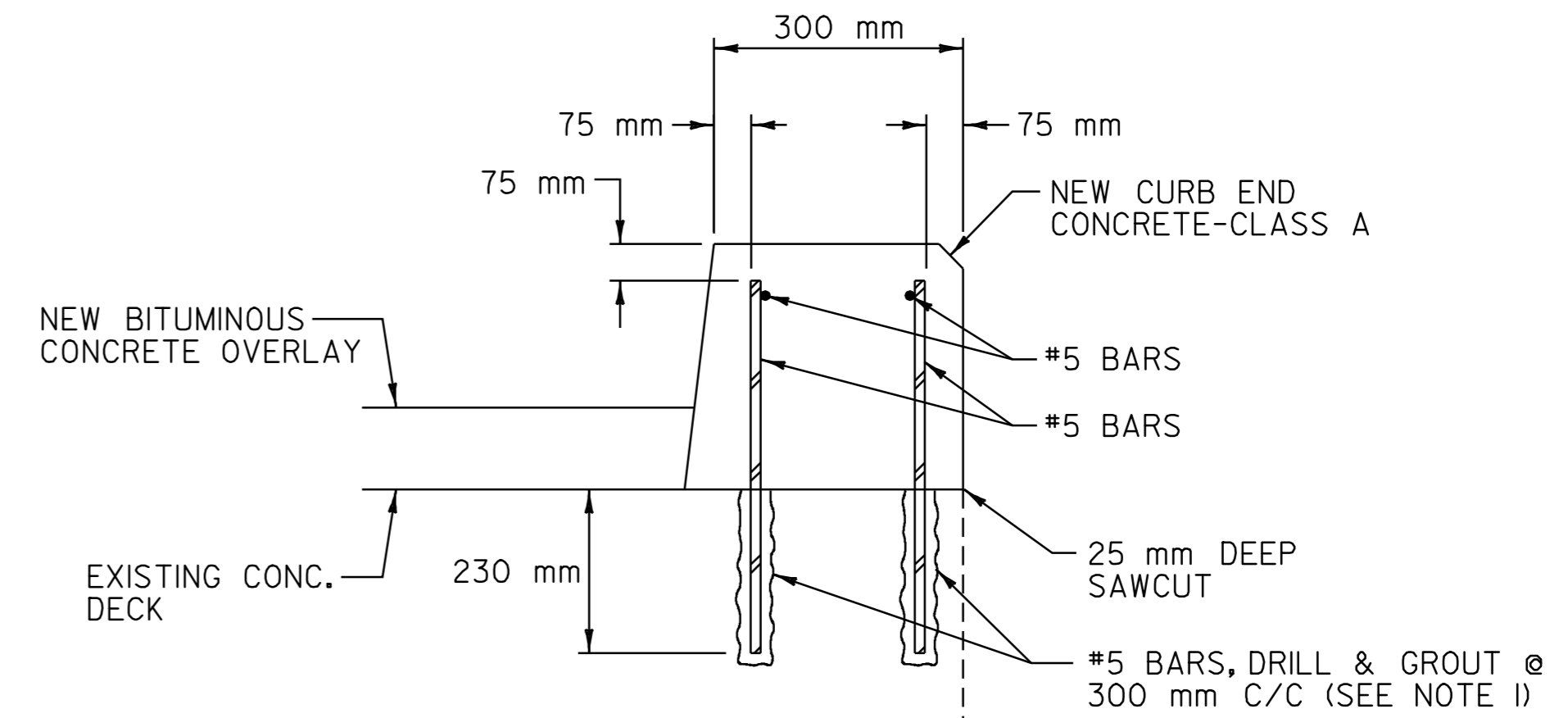


**NEW CURB END TREATMENT
PLAN VIEW**

BR 42 MT. HOLLY STA. 9+716.3 LT
BR 42 MT. HOLLY STA. 9+734.3 LT
N.T.S



JOINT DETAIL (SEE NOTE 4)
N.T.S



SECTION B-B
N.T.S

NOTES

1. LOCATION OF EXISTING U-BARS IS NOT KNOWN, DRILL AND GROUTE #5 BAR DOWELS AS SHOWN IN END TREATMENT DETAILS. WHEN DIRECTED BY THE RESIDENT ENGINEER, ANY EXISTING U-BARS SHALL BE REMOVED AND SUBSEQUENTLY REPLACED BY #5 BAR DOWELS AS REQUIRED TO PROVIDE THE NECESSARY VERTICAL REINFORCEMENT. PAYMENT FOR ALL DRILLING AND GROUTING SHALL BE CONSIDERED SUBSIDIARY TO ITEM 501.22 CONCRETE - CLASS A.
2. WHEN POURING NEW CONCRETE CURBS, THE CONCRETE SHALL BE POURED BACK TO THE ORIGINAL CURB LINE AND GRADE.
3. THE REMOVAL OF CONCRETE CURBING ON BR 42 TO THE LIMITS SHOWN WILL BE PAID FOR AS ONE EACH UNDER THE ITEM 529.20 PARTIAL REMOVAL OF STRUCTURE. THE RUBBLE CREATED BY THE REMOVAL SHALL NOT BE LEFT AT THE BRIDGE SITE, BUT SHALL BE DISPOSED OF PROPERLY AS DIRECTED BY THE RESIDENT ENGINEER.
4. POLYURETHANE JOINT SEALER AND CORK EXPANSION MATERIAL SHALL BE USED BETWEEN THE NEW CONCRETE CURB AND THE EXISTING CONCRETE CURB. PAYMENT FOR THE JOINT SEALER SHALL BE MADE UNDER ITEM 524.20 JOINT SEALER, POLYURETHANE. PAYMENT FOR THE CORK EXPANSION MATERIAL SHALL BE CONSIDERED SUBSIDIARY TO ITEM 501.22 CONCRETE - CLASS A.

DATUM	
VERTICAL	N/A
HORIZONTAL	N/A

BRIDGE CURB DETAIL SHEET	SURVEYED BY	N/A	DATE	N/A
	DRAWN BY	C.A.K.	DATE	
	SQUAD LEADER	T.P.K.		
	DESIGN FILE NO.	/pave/01b024/pb024.dgn		
	IPARM FILE	pb024b.cd.L	DATE PLOTTED	\$DATE\$
	PROJ. NAME	LUDLOW - MI. HOLLY		
	PROJ. NO.	NH_232I(1)S		
	SHEET	83	OF	84
			SHEETS	