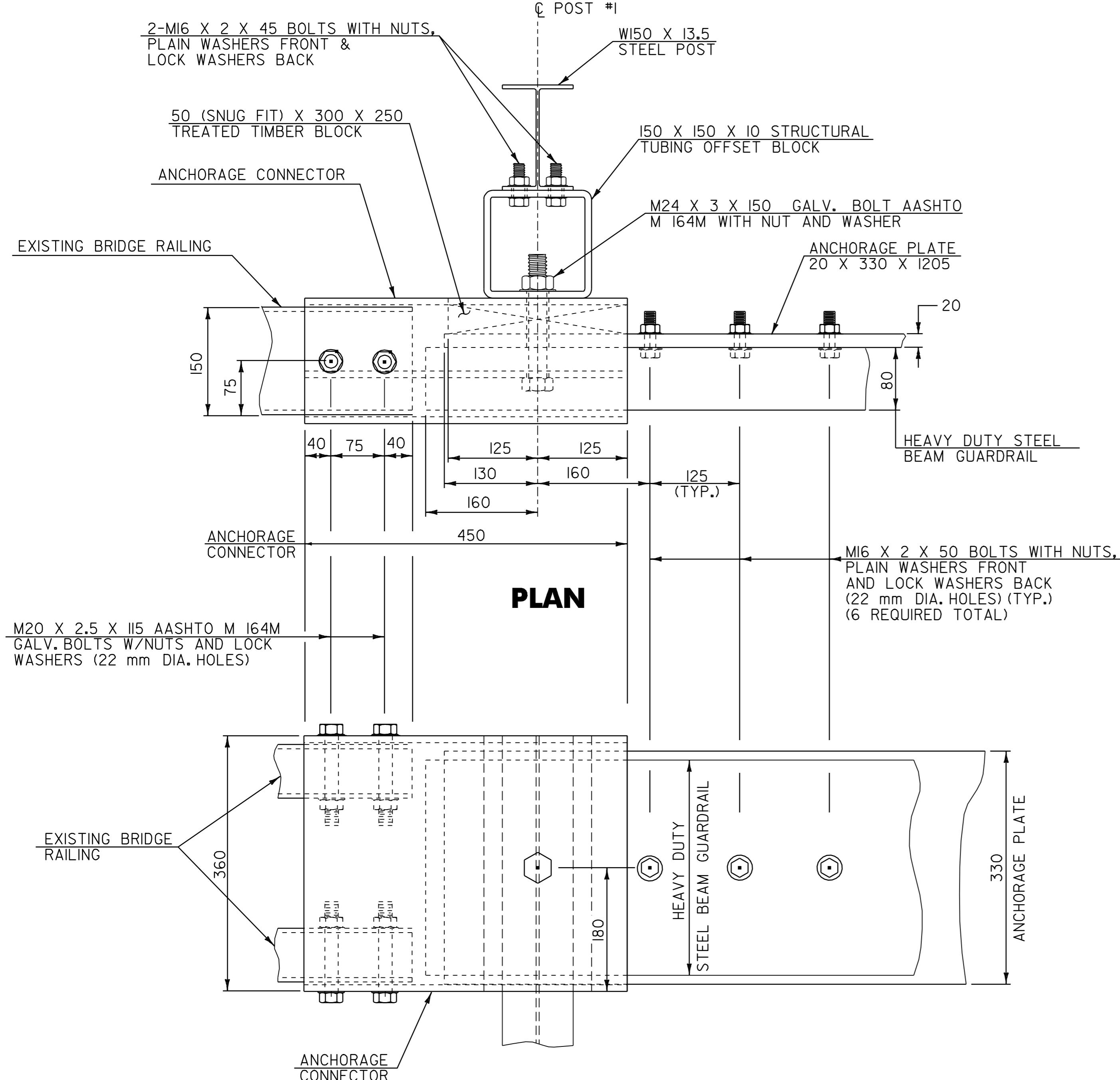
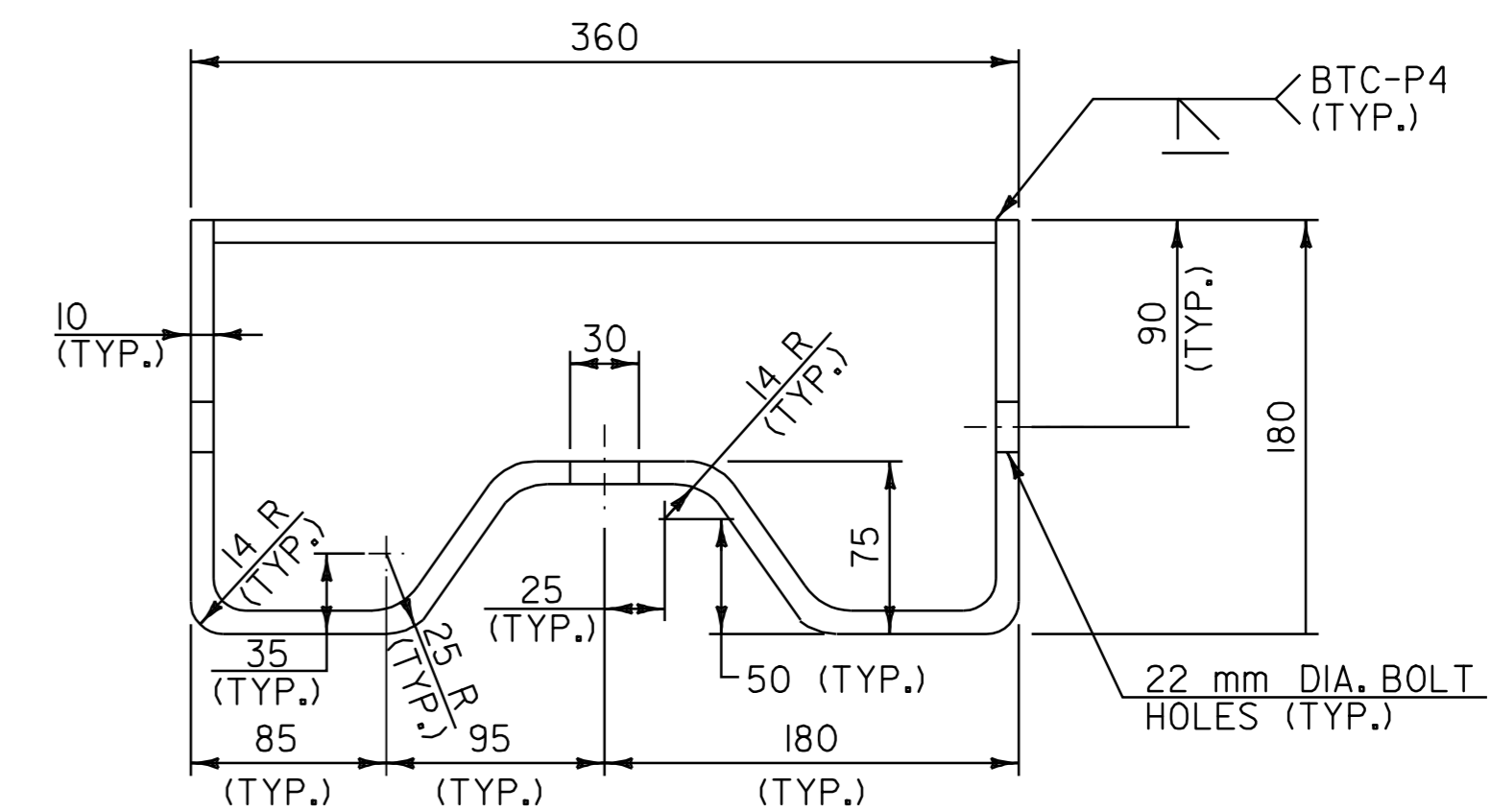
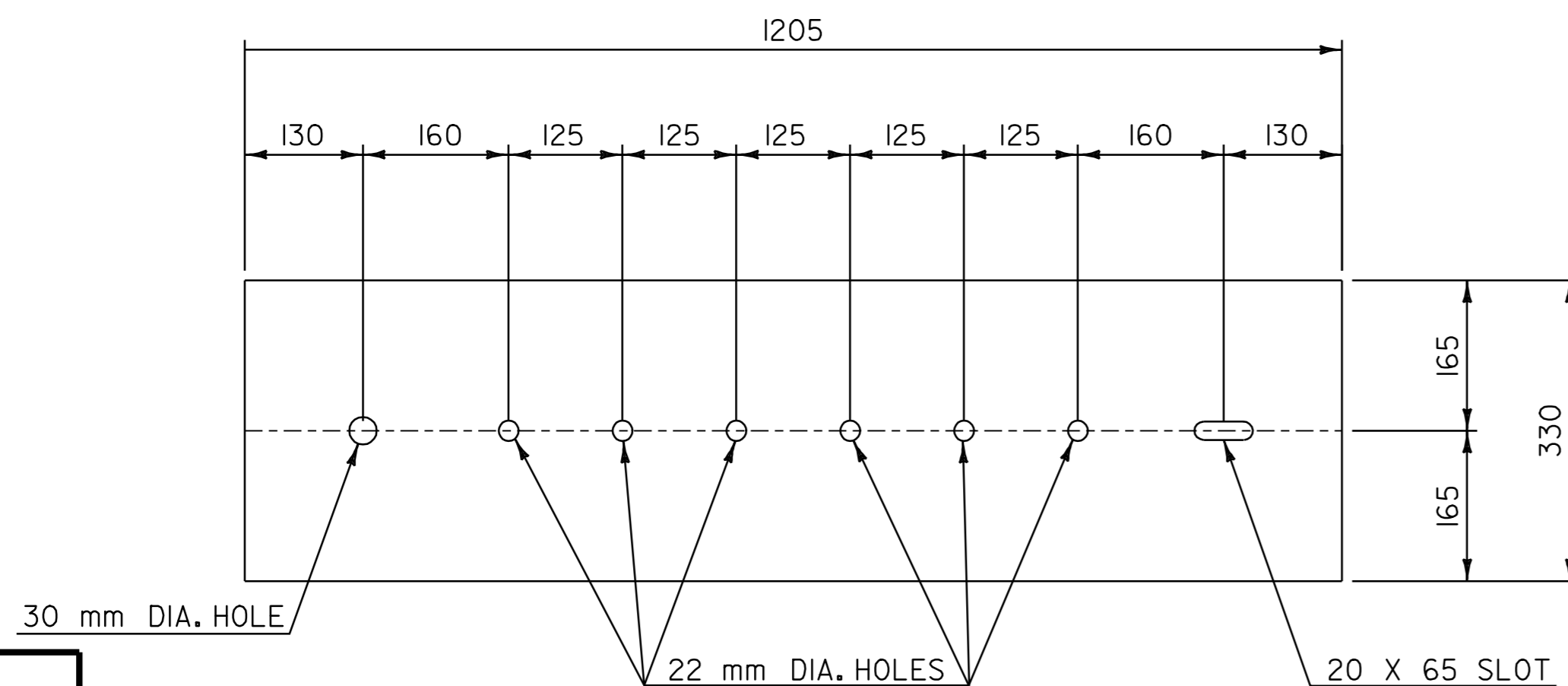


### NOTES

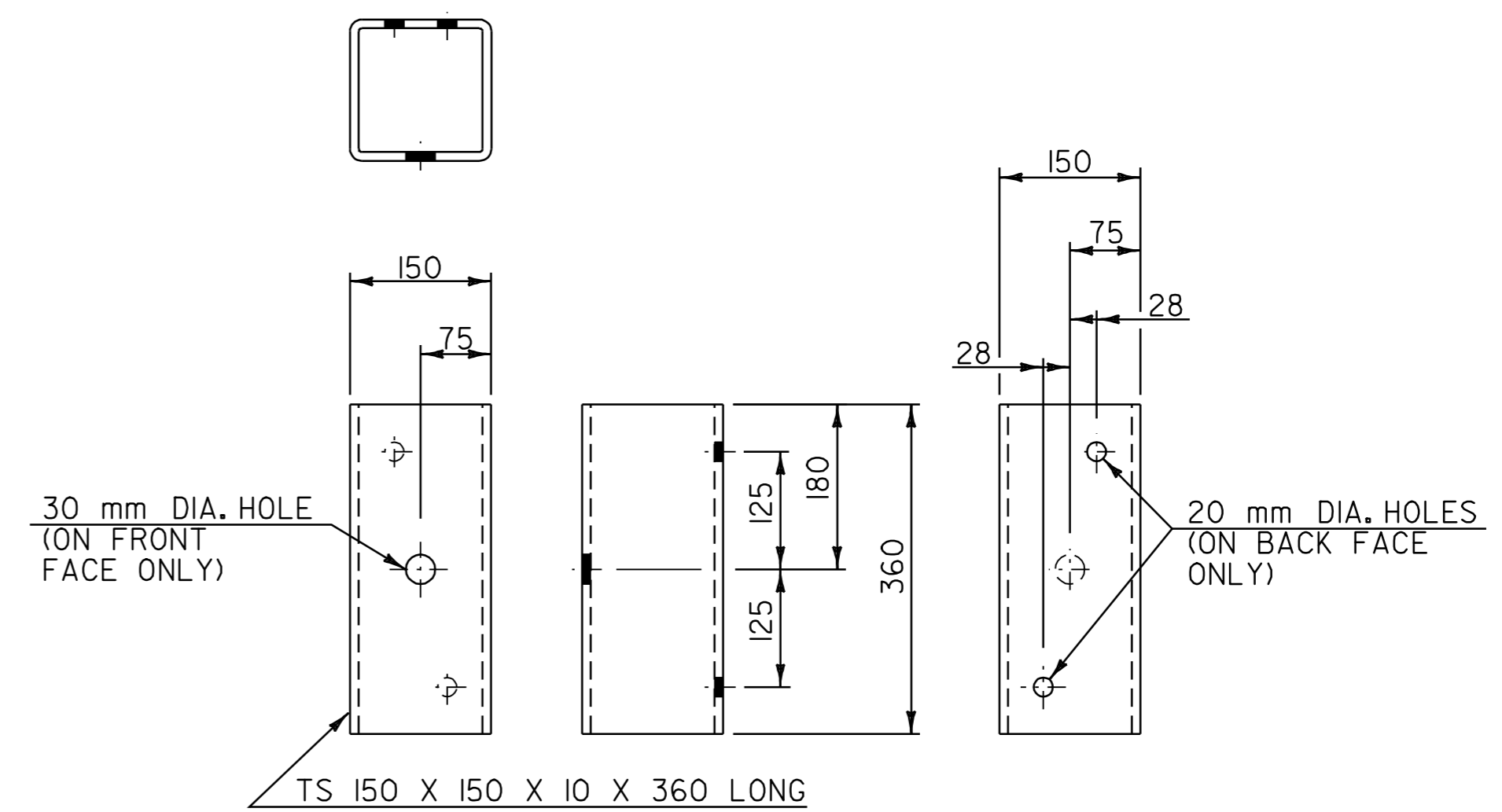
1. REFER TO STANDARD G-IM FOR ADDITIONAL RAIL DETAILS.
2. ALL POSTS FOR HEAVY DUTY STEEL BEAM GUARDRAIL SHALL BE STEEL IN ACCORDANCE WITH SECTION 728 "GUARDRAIL, GUIDE POSTS AND BARRIERS" UNLESS OTHERWISE SPECIFIED IN THE CONTRACT.
3. APPROACH RAIL SPLICES SHALL LAP IN DIRECTION OF TRAFFIC FLOW.
4. ANCHORAGE CONNECTOR AND ANCHORAGE PLATE SHALL BE AASHTO M 270/M 270M, GRADE 250 GALVANIZED TO AASHTO M III AFTER FABRICATION.
5. ALL BOLTS, NUTS AND WASHERS SHALL BE GALVANIZED TO AASHTO M 232 AFTER FABRICATION.
6. STRUCTURAL TUBING OFFSET BLOCK SHALL BE AASHTO M 183/M 183M GALVANIZED TO AASHTO M III AFTER FABRICATION.
7. APPROACH RAILING SHALL BE HEAVY DUTY STEEL BEAM FOR EITHER TYPE OF GUARDRAIL APPROACH SECTION.
8. ALLOWABLE DIMENSIONAL TOLERANCE FOR BENT SECTIONS IS  $\pm 1.6$  mm.
9. THE UNIT PRICES BID FOR EITHER TYPE OF GUARDRAIL APPROACH SECTION SHALL INCLUDE ANCHORAGE CONNECTOR, ANCHORAGE PLATE, HEAVY DUTY STEEL BEAM GUARDRAIL, POSTS, OFFSET BLOCKS, BLOCKING, BOLTS, AND ALL NECESSARY HARDWARE.



**CONNECTION/TRANSITION DETAILS AT POST NO. 1**  
NOT TO SCALE



**ANCHORAGE CONNECTOR DETAIL**  
(SEE NOTE 7)  
NOT TO SCALE



**STRUCTURAL TUBING OFFSET BLOCK DETAILS**  
(OCCURS AT POST NO. 1 WHEN USING APPROACH RAIL UTILIZING STEEL POSTS)  
NOT TO SCALE

NOTE:  
ALL DIMENSIONS IN MILLIMETERS EXCEPT WHERE OTHERWISE INDICATED.

|            |     |
|------------|-----|
| DATUM      |     |
| VERTICAL   | N/A |
| HORIZONTAL | N/A |

|  |                                  |
|--|----------------------------------|
| <b>BRIDGE APPROACH SECTION DETAIL SHEET #2</b> |                                  |
| SURVEYED BY                                    | N/A DATE N/A                     |
| DRAWN BY                                       | C.A.K. DATE                      |
| SQUAD LEADER                                   | T.P.K.                           |
| DESIGN FILE NO.                                | pb024bq2.i                       |
| IPARM FILE                                     | pb024bq2.i DATE PLOTTED \$DATE\$ |
| PROJ. NAME                                     | LUJLOW - MI. HOLLY               |
| PROJ. NO.                                      | NH_232I(1)S                      |
| SHEET  | 82 OF 84 SHEETS                  |