

646.40 DURABLE 100 mm WHITE LINE
(ALL LINES WILL INCLUDE EDGE LINE BREAKS AND RADIUS FOR TOWN HIGHWAYS)

MT. HOLLY:
STA. 6+500.0 - STA. 7+040.0, LT & RT

646.60 TEMPORARY 100 mm WHITE LINE
(ALL LINES WILL INCLUDE EDGE LINE BREAKS AND RADIUS FOR TOWN HIGHWAYS)

MT. HOLLY:
STA. 6+500.0 - STA. 7+040.0, LT & RT

646.41 DURABLE 100 mm YELLOW LINE
(ALL LINES WILL INCLUDE C/L BREAKS FOR TOWN HIGHWAYS) S=SOLID, D=DASHED

MT. HOLLY: LT CL RT
 STA. 6+500.0 - STA. 6+533.9 6+553 S - D - S
 STA. 6+533.9 - STA. 6+654.6 6+674 - - - S
 STA. 6+654.6 - STA. 6+775.3 6+853 S - - - S
 STA. 6+775.3 - STA. 6+839.0 6+853 S - - - S
 STA. 6+839.0 - STA. 6+952.0 - - - - - S
 STA. 6+952.0 - STA. 7+040.0 - - - - - D
 BB 12/13/04

646.61 TEMPORARY 100 mm YELLOW LINE
(ALL LINES WILL INCLUDE C/L BREAKS FOR TOWN HIGHWAYS) S=SOLID, D=DASHED

MT. HOLLY: LT CL RT
 STA. 6+500.0 - STA. 6+533.9 S - - - - - S
 STA. 6+533.9 - STA. 6+654.6 - - - - - D
 STA. 6+654.6 - STA. 6+775.3 - - - - - D
 STA. 6+775.3 - STA. 6+839.0 - - - - - S
 STA. 6+839.0 - STA. 6+952.0 - - - - - S
 STA. 6+952.0 - STA. 7+040.0 - - - - - D

646.46 DURABLE 600 mm STOP BAR
MT. HOLLY:
STA. 6+831.665 RT, T-4

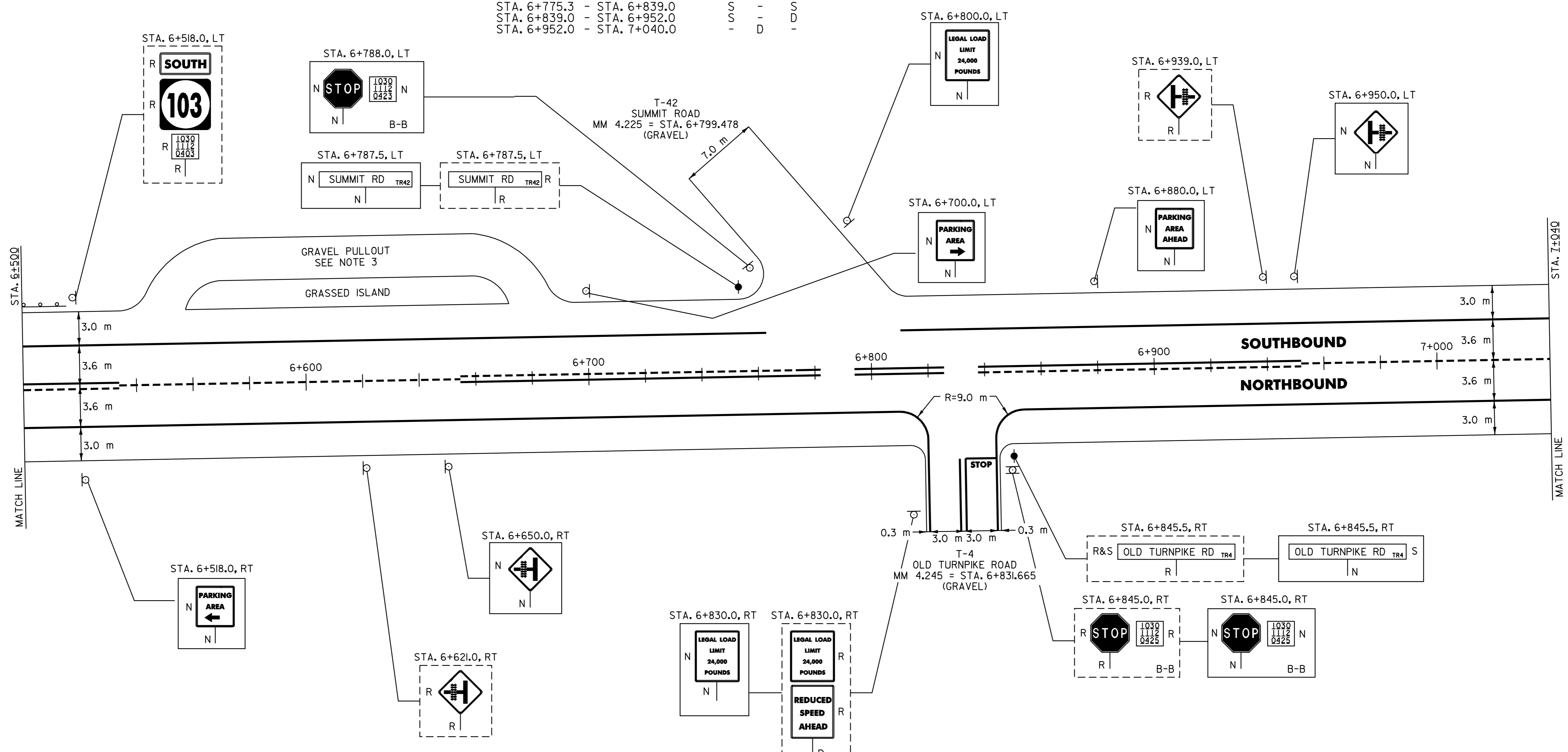
646.66 TEMPORARY 600 mm STOP BAR
MT. HOLLY:
STA. 6+831.665 RT, T-4

646.50 DURABLE LETTER OR SYMBOL
MT. HOLLY:
STA. 6+831.665 RT, T-4, "S,T,O,P" (4 EA)

646.70 TEMPORARY LETTER OR SYMBOL
MT. HOLLY:
STA. 6+831.665 RT, T-4, "S,T,O,P" (4 EA)

675.50 REMOVING SIGNS
AS SHOWN - II

675.60 ERECTING SALVAGED SIGNS
AS SHOWN - I



- NOTES:
- PAVING LIMIT ON ALL TOWN HIGHWAYS SHALL BE MEASURED 8 m BACK FROM VT. ROUTE 103 EDGE OF SHOULDER UNLESS DENOTED OTHERWISE ON THE PLANS OR AS DIRECTED BY THE RESIDENT ENGINEER.
 - THE CONTRACTOR SHOULD BE AWARE THAT EXISTING BURIED UTILITIES (SUCH AS PHONE CABLE, FIBER OPTIC CABLE, SEWER LINES, ETC.) ARE LOCATED ADJACENT TO VT. ROUTE 103 WITHIN THE PROJECT LIMITS. THE CONTRACTOR IS RESPONSIBLE FOR CONTACTING "DIG SAFE" AT 1-888-344-7233 TO DETERMINE THE EXACT LOCATIONS OF THESE UTILITIES PRIOR TO INSTALLING GUARDRAIL, CLEANING DITCHES OR PERFORMING ANY OTHER OPERATIONS THAT MAY DISTURB THE EXISTING SUBSURFACE CONDITIONS.
 - PLACE 100 mm OF COMPACTED COLD PLANE GRINDINGS ON THE EXISTING GRAVEL PULLOUT AND PROVIDE A 30 mm TYPE IVS 1.5 m WIDE APRON. ANY REQUIRED EXCAVATION SHALL BE PERFORMED AS DIRECTED BY THE RESIDENT ENGINEER AND PAID UNDER ITEM 608.25.

SIGN LEGEND
 R= REMOVE
 S= SALVAGE
 N= NEW
 RET= RETAIN
 B-B= BACK TO BACK
 EXISTING= _____
 NEW= _____

ARCHIVED
ON CADD

621.20 STEEL BEAM GUARDRAIL
MT. HOLLY:
STA. 6+500.0 - STA. 6+506.7 LT (6.7 m)

621.505 MANUFACTURED TERMINAL SECTION (FLARED)
MT. HOLLY:
STA. 6+506.7 LT

621.80 REMOVAL AND DISPOSAL OF GUARDRAIL
MT. HOLLY:
STA. 6+500.0 - STA. 6+517.0 (17.0 m)

DATUM
 VERTICAL N/A
 HORIZONTAL N/A

<h2 style="margin: 0;">PAVING PROJECT LAYOUT</h2> <h3 style="margin: 0;"># 22</h3>	SURVEYED BY <u>N/A</u> DATE <u>N/A</u>
	DRAWN BY <u>C.A.K.</u> DATE _____
	SQUAD LEADER <u>T.P.K.</u>
	DESIGN FILE NO. <u>z:pave\01b024\pb024.dgn</u>
	IPARM FILE <u>pb024\22-1</u> DATE PLOTTED <u>\$DATE\$</u>
PROJ. NAME <u>LUDLOW - MT. HOLLY</u>	
PROJ. NO. <u>NH_2327(1)S</u>	
SHEET <u>31</u> OF <u>84</u> SHEETS _____	