

646.40 DURABLE 100 mm WHITE LINE
 (ALL LINES WILL INCLUDE EDGE LINE BREAKS AND RADIUS FOR TOWN HIGHWAYS)
 MT. HOLLY:
 STA. 3+780.0 - STA. 4+340.0, LT & RT
 STA. 3+780.0 - ~~STA. 4+030.0~~, DASHED LINE 3.6 m RT
 STA. 3+900

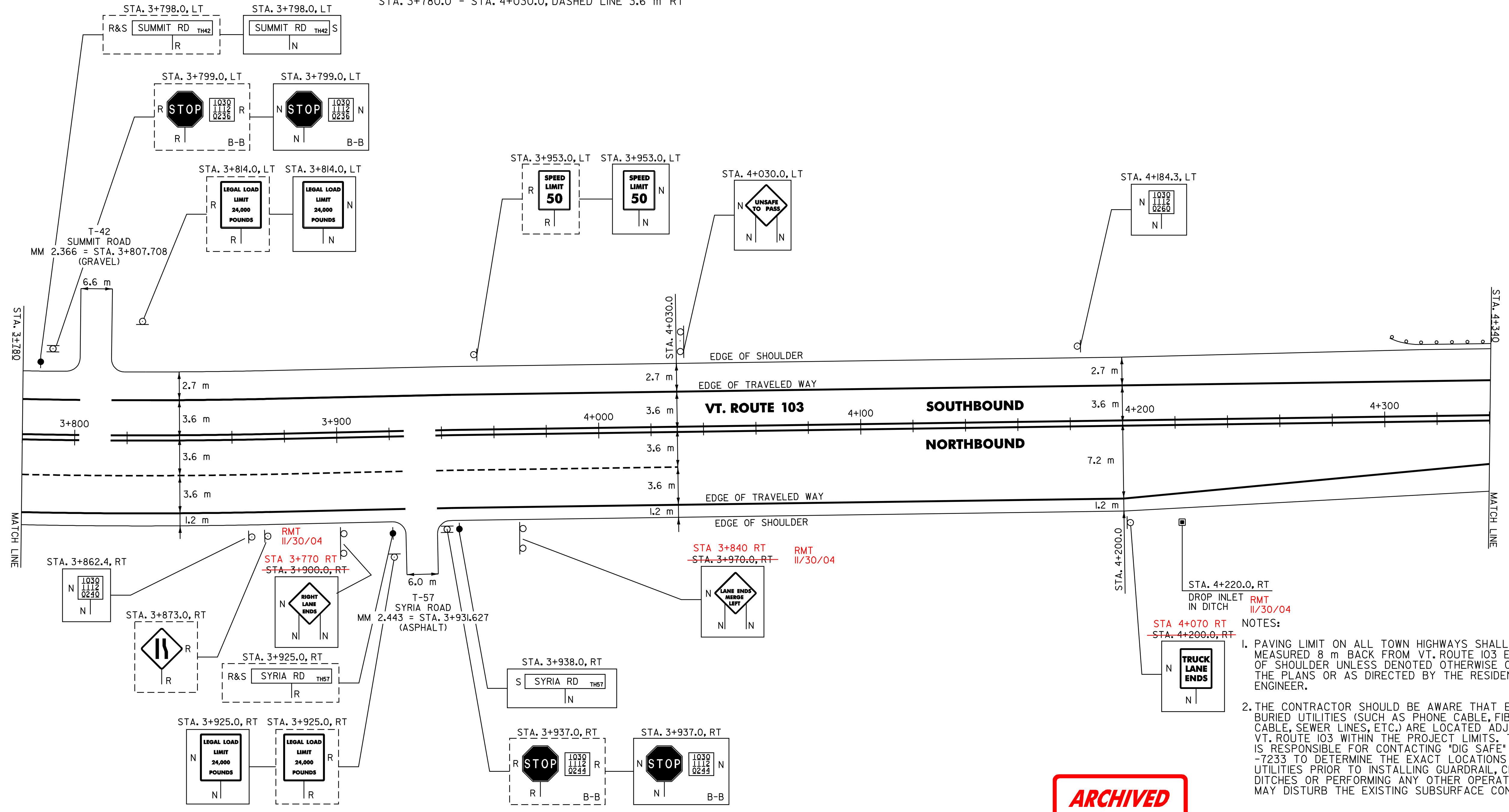
646.60 TEMPORARY 100 mm WHITE LINE 11/30/04
 (ALL LINES WILL INCLUDE EDGE LINE BREAKS AND RADIUS FOR TOWN HIGHWAYS)
 MT. HOLLY:
 STA. 3+780.0 - STA. 4+340.0, LT & RT
 STA. 3+780.0 - STA. 4+030.0, DASHED LINE 3.6 m RT

646.41 DURABLE 100 mm YELLOW LINE
 (ALL LINES WILL INCLUDE C/L BREAKS FOR TOWN HIGHWAYS) S=SOLID, D=DASHED
 MT. HOLLY:
 STA. 3+780.0 - STA. 4+340.0 LT C RT
 S - S

646.61 TEMPORARY 100 mm YELLOW LINE
 (ALL LINES WILL INCLUDE C/L BREAKS FOR TOWN HIGHWAYS) S=SOLID, D=DASHED
 MT. HOLLY:
 STA. 3+780.0 - STA. 4+340.0 LT C RT
 S - S

675.50 REMOVING SIGNS
 AS SHOWN - 10

675.60 ERECTING SALVAGED SIGNS
 AS SHOWN - 2



- NOTES:
- PAVING LIMIT ON ALL TOWN HIGHWAYS SHALL BE MEASURED 8 m BACK FROM VT. ROUTE 103 EDGE OF SHOULDER UNLESS DENOTED OTHERWISE ON THE PLANS OR AS DIRECTED BY THE RESIDENT ENGINEER.
 - THE CONTRACTOR SHOULD BE AWARE THAT EXISTING BURIED UTILITIES (SUCH AS PHONE CABLE, FIBER OPTIC CABLE, SEWER LINES, ETC.) ARE LOCATED ADJACENT TO VT. ROUTE 103 WITHIN THE PROJECT LIMITS. THE CONTRACTOR IS RESPONSIBLE FOR CONTACTING "DIG SAFE" AT 1-888-344-7233 TO DETERMINE THE EXACT LOCATIONS OF THESE UTILITIES PRIOR TO INSTALLING GUARDRAIL, CLEANING DITCHES OR PERFORMING ANY OTHER OPERATIONS THAT MAY DISTURB THE EXISTING SUBSURFACE CONDITIONS.

ARCHIVED
ON CADD

DATUM	
VERTICAL	N/A
HORIZONTAL	N/A

621.20 STEEL BEAM GUARDRAIL
 MT. HOLLY:
 STA. 4+325.6 - STA. 4+340.0 LT (14.4 m)

621.505 MANUFACTURED TERMINAL SECTION (FLARED)
 MT. HOLLY:
 STA. 4+325.6 LT

621.80 REMOVAL AND DISPOSAL OF GUARDRAIL
 MT. HOLLY:
 STA. 4+316.0 - STA. 4+340.0 LT (24.0 m)

SIGN LEGEND
 R= REMOVE
 S= SALVAGE
 N= NEW
 RET= RETAIN
 B-B= BACK TO BACK
 EXISTING= _____
 NEW= _____

PAVING PROJECT LAYOUT # 17	SURVEYED BY	N/A	DATE	N/A
	DRAWN BY	C.A.K.	DATE	
	SQUAD LEADER	T.P.K.		
	DESIGN FILE NO.	/pave/Qib024/pb024.dgn		
	IPARM FILE	pb02417.j	DATE PLOTTED	\$DATE\$
	PROJ. NAME	LUDLOW - MT. HOLLY		
PROJ. NO.	NH_2327(1)S			
SHEET	26	OF	84	SHEETS