

646.40 DURABLE 100 mm WHITE LINE  
(ALL LINES WILL INCLUDE EDGE LINE BREAKS AND RADIUS FOR TOWN HIGHWAYS)

MT. HOLLY:  
STA. 3+260.0 - STA. 3+780.0 LT & RT  
STA. 3+260.0 - STA. 3+780.0 DASHED LINE 3.6 m RT

646.60 TEMPORARY 100 mm WHITE LINE  
(ALL LINES WILL INCLUDE EDGE LINE BREAKS AND RADIUS FOR TOWN HIGHWAYS)

MT. HOLLY:  
STA. 3+260.0 - STA. 3+780.0 LT & RT  
STA. 3+260.0 - STA. 3+780.0 DASHED LINE 3.6 m RT

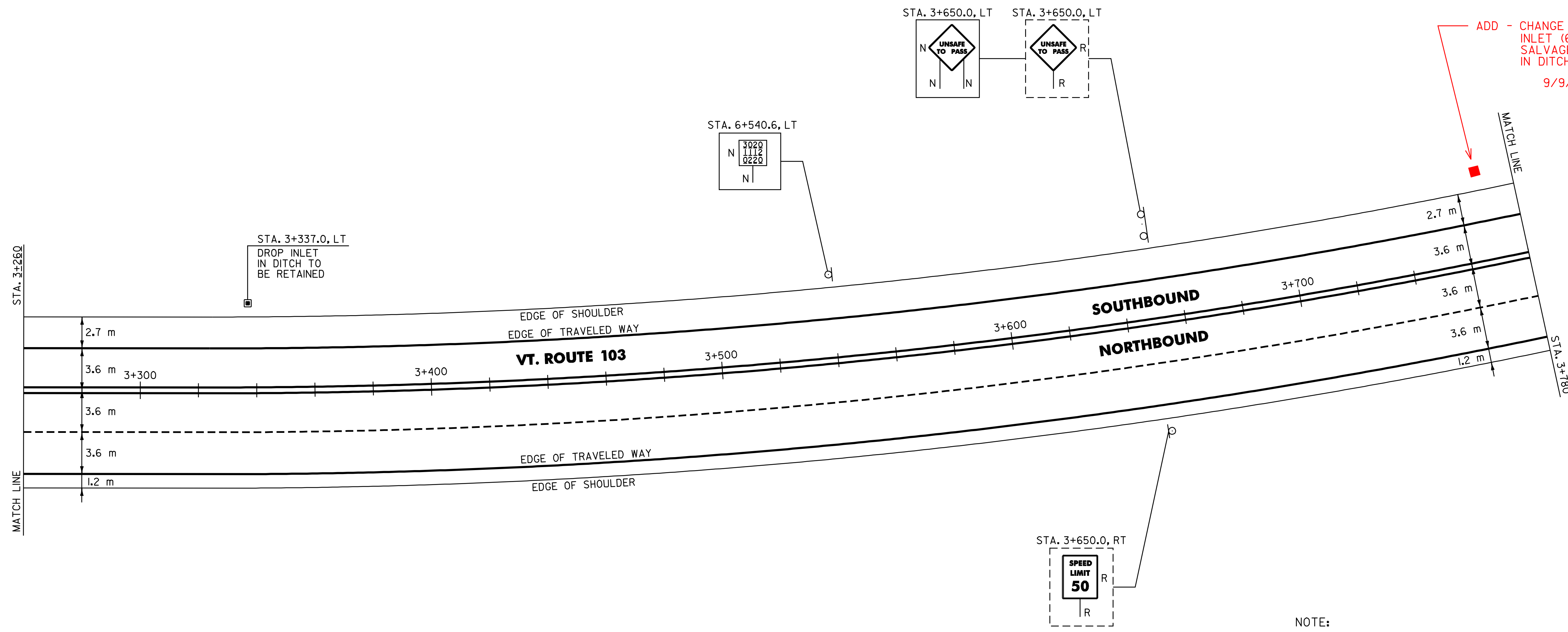
646.41 DURABLE 100 mm YELLOW LINE  
(ALL LINES WILL INCLUDE C/L BREAKS FOR TOWN HIGHWAYS) S=SOLID, D=DASHED

MT. HOLLY: LT C RT  
STA. 3+260.0 - STA. 3+780.0 S - S

646.61 TEMPORARY 100 mm YELLOW LINE  
(ALL LINES WILL INCLUDE C/L BREAKS FOR TOWN HIGHWAYS) S=SOLID, D=DASHED

MT. HOLLY: LT C RT  
STA. 3+260.0 - STA. 3+780.0 S - S

675.50 REMOVING SIGNS  
AS SHOWN - 2



ADD - CHANGE ELEVATION OF DROP INLET (604.40) TO INSTALL SALVAGED GRATE @ DI. IN DITCHLINE.  
9/9/04 RMT

NOTE:  
I. THE CONTRACTOR SHOULD BE AWARE THAT EXISTING BURIED UTILITIES (SUCH AS PHONE CABLE, FIBER OPTIC CABLE, SEWER LINES, ETC.) ARE LOCATED ADJACENT TO VT. ROUTE 103 WITHIN THE PROJECT LIMITS. THE CONTRACTOR IS RESPONSIBLE FOR CONTACTING "DIG SAFE" AT 1-888-344-7233 TO DETERMINE THE EXACT LOCATIONS OF THESE UTILITIES PRIOR TO INSTALLING GUARDRAIL, CLEANING DITCHES OR PERFORMING ANY OTHER OPERATIONS THAT MAY DISTURB THE EXISTING SUBSURFACE CONDITIONS.

**ARCHIVED ON CADD**

DATUM	
VERTICAL	N/A
HORIZONTAL	N/A

SIGN LEGEND  
R= REMOVE  
S= SALVAGE  
N= NEW  
RET= RETAIN  
B-B= BACK TO BACK  
EXISTING= \_\_\_\_\_  
NEW= \_\_\_\_\_

<b>PAVING PROJECT LAYOUT # 16</b>	SURVEYED BY	N/A	DATE	N/A
	DRAWN BY	C.A.K.	DATE	
	SQUAD LEADER	T.P.K.		
	DESIGN FILE NO.	/pave/01b024/pb024.dgd		
	IPARM FILE	pb024i6.i	DATE PLOTTED	\$DATE\$
	PROJ. NAME	LUDLOW - MI. HOLLY		
PROJ. NO.	NH_2327115			
SHEET	25	OF	84	SHEETS