

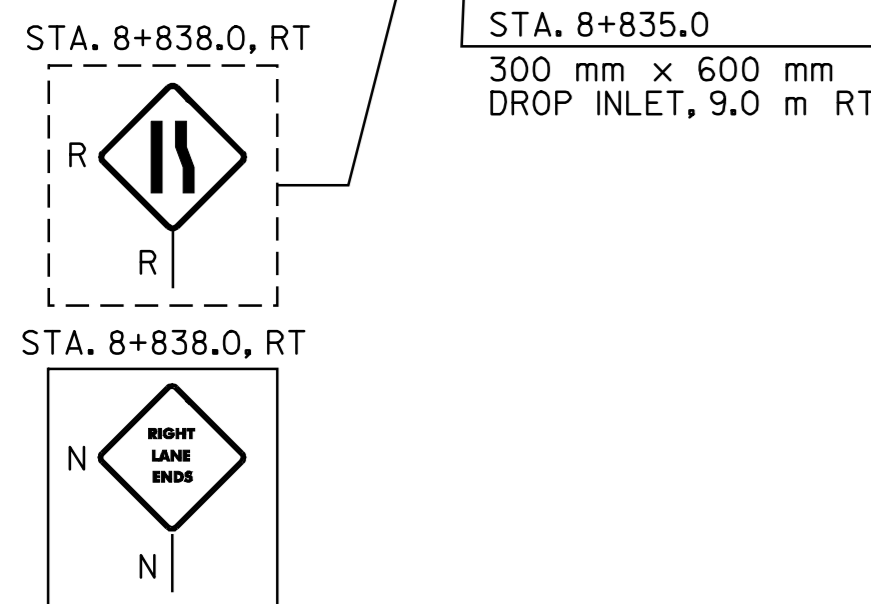
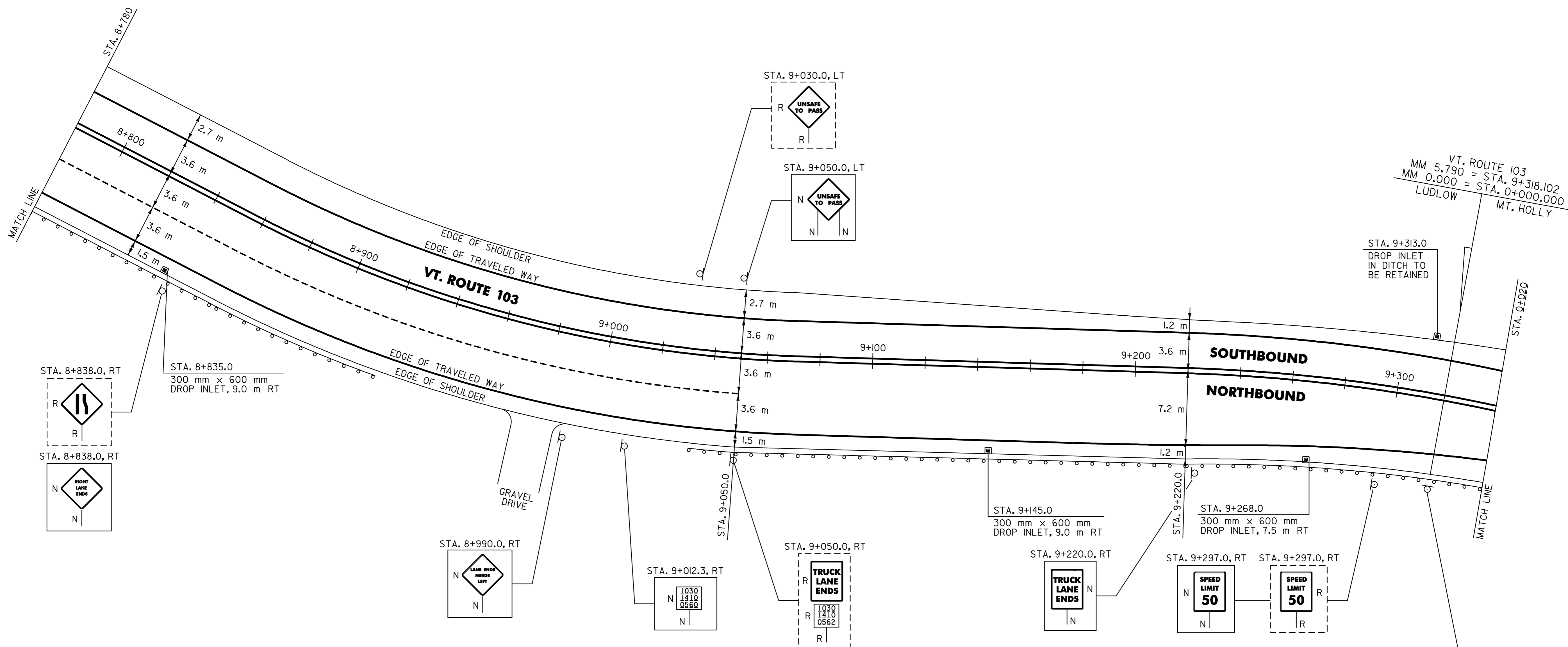
646.40 DURABLE 100 mm WHITE LINE
 (ALL LINES WILL INCLUDE EDGE LINE BREAKS AND RADIUS FOR TOWN HIGHWAYS)
 LUDLOW:
 STA. 8+780.0 - STA. 9+318.102, LT & RT
 STA. 8+780.0 - STA. 9+050.0, DASHED LINE 3.6 m RT
 MT. HOLLY:
 STA. 0+000.0 - STA. 0+020.0 LT & RT

646.60 TEMPORARY 100 mm WHITE LINE
 (ALL LINES WILL INCLUDE EDGE LINE BREAKS AND RADIUS FOR TOWN HIGHWAYS)
 LUDLOW:
 STA. 8+780.0 - STA. 9+318.102, LT & RT
 STA. 8+780.0 - STA. 9+050.0, DASHED LINE 3.6 m RT
 MT. HOLLY:
 STA. 0+000.0 - STA. 0+020.0 LT & RT

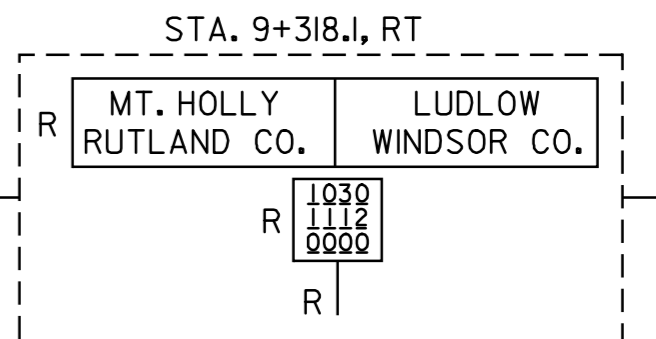
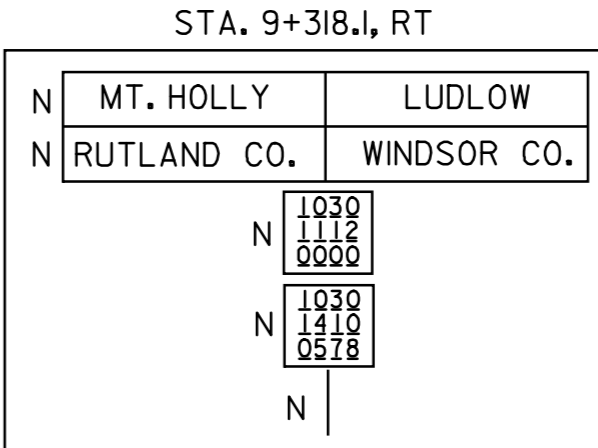
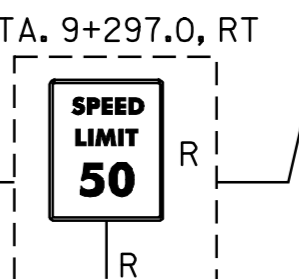
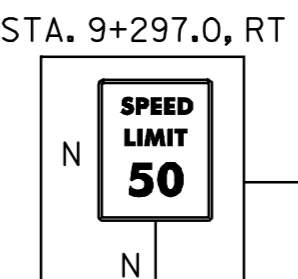
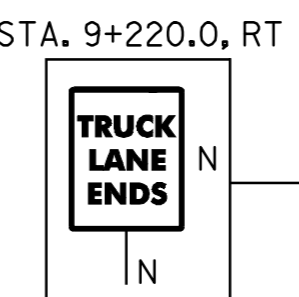
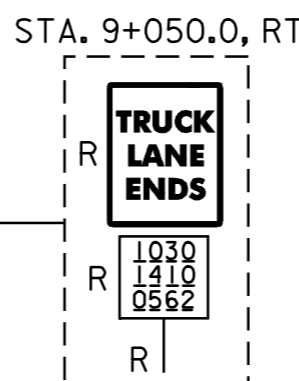
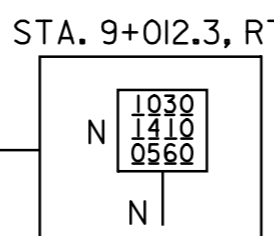
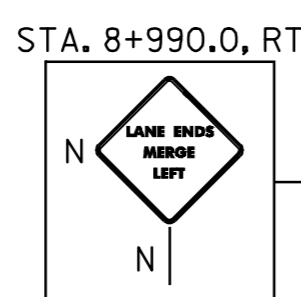
646.41 DURABLE 100 mm YELLOW LINE
 (ALL LINES WILL INCLUDE C/L BREAKS FOR TOWN HIGHWAYS) S=SOLID, D=DASHED
 LUDLOW:
 STA. 8+780.0 - STA. 9+318.102 LT C RT S - S
 MT. HOLLY:
 STA. 0+000.0 - STA. 0+020.0 S - S

646.61 TEMPORARY 100 mm YELLOW LINE
 (ALL LINES WILL INCLUDE C/L BREAKS FOR TOWN HIGHWAYS) S=SOLID, D=DASHED
 LUDLOW:
 STA. 8+780.0 - STA. 9+318.102 LT C RT S - S
 MT. HOLLY:
 STA. 0+000.0 - STA. 0+020.0 S - S

675.50 REMOVING SIGNS
 AS SHOWN - 7



STA. 8+835.0
 300 mm x 600 mm
 DROP INLET, 9.0 m RT



604.412 REHABING DI, CB OR MH, CLASS I
 LUDLOW:
 STA. 8+835.0 RT
 STA. 9+145.0 RT
 STA. 9+268.0 RT

621.505 MANUFACTURED TERMINAL SECTION (FLARED)
 LUDLOW:
 STA. 8+905.4 RT
 STA. 9+046.8 RT

616.35 TREATED TIMBER CURB
 LUDLOW:
 STA. 8+780.0 - STA. 8+895.0 RT (115.0 m)
 STA. 9+142.0 - STA. 9+318.1 RT (176.1 m)
 MT. HOLLY:
 STA. 0+000.0 - STA. 0+020.0 RT (20.0 m)

621.80 REMOVAL AND DISPOSAL OF GUARDRAIL
 LUDLOW:
 STA. 8+780.0 - STA. 8+915.0 RT (135.0 m)
 STA. 9+037.0 - STA. 9+318.1 RT (281.1 m)
 MT. HOLLY:
 STA. 0+000.0 - STA. 0+020.0 RT (20.0 m)

NOTE:
 I. THE CONTRACTOR SHOULD BE AWARE THAT EXISTING BURIED UTILITIES (SUCH AS PHONE CABLE, FIBER OPTIC CABLE, SEWER LINES, ETC.) ARE LOCATED ADJACENT TO VT. ROUTE 103 WITHIN THE PROJECT LIMITS. THE CONTRACTOR IS RESPONSIBLE FOR CONTACTING "DIG SAFE" AT 1-888-344-7233 TO DETERMINE THE EXACT LOCATIONS OF THESE UTILITIES PRIOR TO INSTALLING GUARDRAIL, CLEANING DITCHES OR PERFORMING ANY OTHER OPERATIONS THAT MAY DISTURB THE EXISTING SUBSURFACE CONDITIONS.

SIGN LEGEND
 R= REMOVE
 S= SALVAGE
 N= NEW
 RET= RETAIN
 B-B= BACK TO BACK
 EXISTING= _____
 NEW= _____

PAVING PROJECT LAYOUT # 9

SURVEYED BY N/A DATE N/A
 DRAWN BY C.A.K. DATE _____
 SQUAD LEADER T.P.K.
 DESIGN FILE NO. 2pave/01b024/pb024.dgn
 IPARM FILE pb024109.1 DATE PLOTTED \$DATE\$
 PROJ. NAME LUDLOW - MT. HOLLY
 PROJ. NO. NH_232I(1)S
 SHEET 18 OF 84 SHEETS _____

DATUM
 VERTICAL N/A
 HORIZONTAL N/A

621.20 STEEL BEAM GUARDRAIL
 LUDLOW:
 STA. 8+780.0 - STA. 8+905.4 RT (125.4 m)
 STA. 9+046.8 - STA. 9+318.1 RT (271.3 m)
 MT. HOLLY:
 STA. 0+000.0 - STA. 0+020.0 RT (20.0 m)