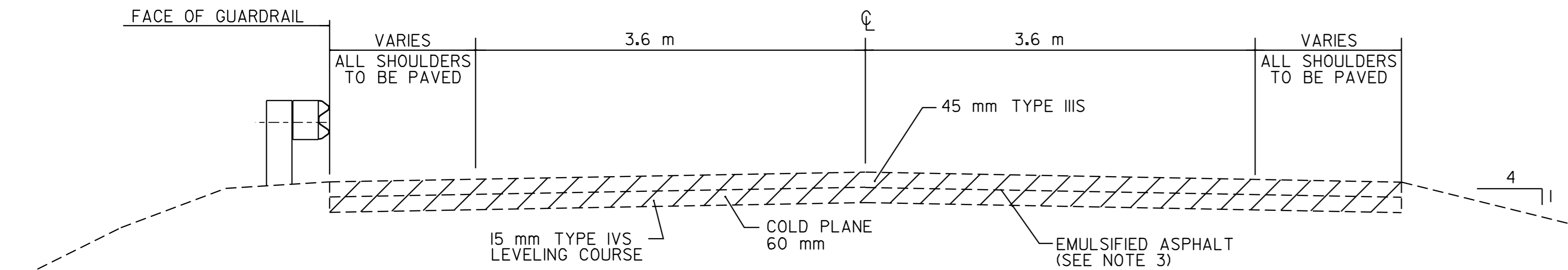


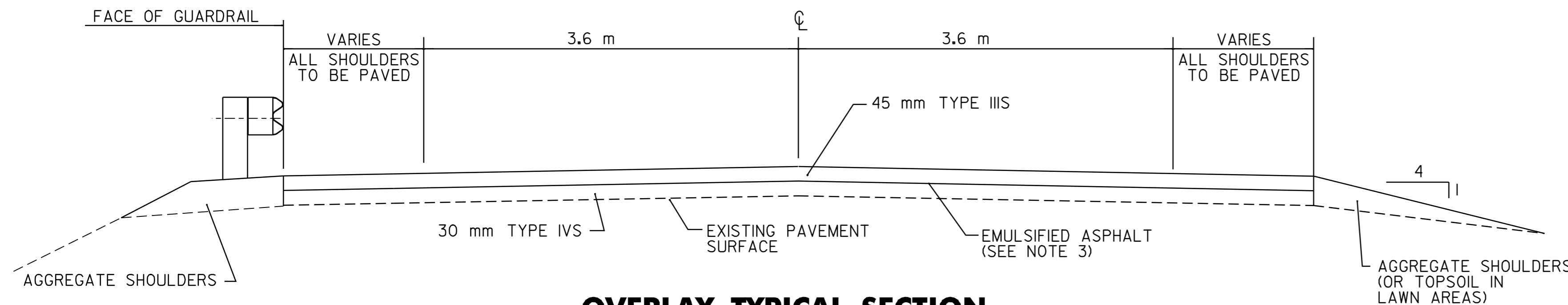
### NOTES

1. THE WEARING COURSE SHALL BE TYPE IIIS SUPERPAVE BITUMINOUS CONCRETE PAVEMENT. THE LEVELING COURSE SHALL BE TYPE IVS UNLESS OTHERWISE DIRECTED BY THE RESIDENT ENGINEER. ALL ASPHALT CEMENT USED IN THE SUPERPAVE BITUMINOUS CONCRETE PAVEMENT SHALL BE PG 58-34.
2. EXISTING SHOULDER MATERIAL DEEMED UNSUITABLE BY THE RESIDENT ENGINEER SHALL BE EXCAVATED TO A DEPTH OF 75 mm OR AS DIRECTED BY THE RESIDENT ENGINEER. EXCAVATED MATERIAL SHALL BE SPREAD ON THE ADJACENT SLOPES OR REMOVED FROM THE PROJECT, AS DIRECTED BY THE RESIDENT ENGINEER. EXCAVATION WILL BE PAID FOR AS ALL-PURPOSE EXCAVATOR OR GRADER RENTAL. MATERIAL REMOVED SHALL BE REPLACED WITH SUBBASE OF CRUSHED GRAVEL (FINE GRADED).
3. EMULSIFIED ASPHALT SHALL BE APPLIED ON ALL EXISTING PAVEMENT SURFACES, ON ALL COLD PLANED SURFACES AND BETWEEN ALL COURSES OF PAVEMENT AT THE RATE OF 0.12 L/m<sup>2</sup> OR AS DIRECTED BY THE RESIDENT ENGINEER.
4. BITUMINOUS CONCRETE PAVEMENT TOLERANCE = ±5 mm (TOTAL PAVEMENT THICKNESS EXCLUDING LEVELING).
5. ALL DRIVEWAYS AND MAILBOX TURNOUTS SHALL RECEIVE A PAVED APRON AS DIRECTED BY THE RESIDENT ENGINEER. ALL MAILBOX TURNOUTS SHALL HAVE THE EXISTING EDGE OF PAVEMENT BACKED-UP WITH COLD PLANE GRINDINGS PRIOR TO THE PLACEMENT OF THE PAVED APRON. COMPENSATION FOR THIS WORK SHALL BE MADE UNDER THE APPROPRIATE EQUIPMENT RENTAL ITEM(S).
6. AN ESTIMATED QUANTITY OF EARTH BORROW HAS BEEN INCLUDED FOR THE PROVISION OF CONSTRUCTING MANUFACTURED TERMINAL SECTION FLARES WHICH SHALL BE CAPPED WITH AN ESTIMATED 75 mm DEPTH OF AGGREGATE SHOULDER MATERIAL UNLESS OTHERWISE DIRECTED BY THE RESIDENT ENGINEER. THE QUANTITIES INCLUDED REFLECT 20 m<sup>3</sup> OF EARTH BORROW AND 5 TONS OF AGGREGATE SHOULDER MATERIAL FOR EACH GUARDRAIL TERMINAL.
7. ALL OTHER SUPERPAVE BITUMINOUS CONCRETE PAVEMENT WORK, WHICH COULD INVOLVE SOME HAND-WORK (SUCH AS, BUT NOT LIMITED TO, DRIVE AND SIDE ROAD APPROACHES AND AROUND DRAINAGE/UTILITY STRUCTURES), SHALL BE PAID FOR AT THE CONTRACT UNIT PRICE FOR ITEM 490.30 SUPERPAVE BITUMINOUS CONCRETE PAVEMENT (PG 58-34).
8. GRASS GROWING ADJACENT TO PAVEMENT OR THROUGH CRACKS IN THE PAVEMENT WHICH MAY HAMPER THE PLACEMENT OF NEW BITUMINOUS CONCRETE SHALL BE REMOVED BY THE CONTRACTOR AS DIRECTED BY THE RESIDENT ENGINEER. PAYMENT FOR THIS WORK WILL NOT BE MADE DIRECTLY, BUT WILL BE CONSIDERED SUBSIDIARY TO ITEM 490.30 SUPERPAVE BITUMINOUS CONCRETE PAVEMENT (PG 58-34).
9. 1.0 m OF BACKING IS REQUIRED BEHIND THE FACE OF GUARDRAIL WITH 1.8 m POSTS. IF THIS CANNOT BE OBTAINED, THEN 2.4 m POSTS SHALL BE USED.



### COLD PLANE, LEVEL & OVERLAY TYPICAL SECTION

VT. ROUTE 103 LUDLOW STA. 4+549.616 TO LUDLOW STA. 6+963.631



### OVERLAY TYPICAL SECTION

VT. ROUTE 103 LUDLOW STA. 6+963.631 TO MT. HOLLY STA. 12+412.870

### PROJECT PAVING LIMITS

TOWN & ROUTE	BEGIN STATION	END STATION	LANE TYPICAL	WEARING DEPTH	LEVELING †	NOTES
LUDLOW VT. ROUTE 103	4+549.616	6+963.631	VARIES - 3.6 m - 3.6 m - VARIES	45 mm	1287	COLD PLANE 60 mm, LEVEL 15 mm TYPE IVS, OVERLAY 45 mm TYPE IIIS
LUDLOW-MT. HOLLY VT. ROUTE 103	6+963.631	12+412.870	VARIES - 3.6 m - 3.6 m - VARIES	45 mm	14266	PAVE WITH 30 mm TYPE IVS AND 45 mm TYPE IIIS

### CONSERVATION SEED MIX

RURAL AREA - SEED MIXTURE					
% WT.	kg/ha.	NAME	PUR. %	GERM. %	
37.14	26.0	CREEPING RED FESCUE	98	85	
37.14	26.0	TALL FESCUE	95	90	
5.71	4.0	RED TOP	95	90	
14.30	10.0	BIRDSFOOT TREFOIL	98	85	
5.71	4.0	ANNUAL RYEGRASS	95	85	
100.0	70.0				

SEED MIXTURE:  
SHALL NOT HAVE A WEED CONTENT EXCEEDING 0.40% BY WEIGHT AND SHALL BE FREE OF ALL NOXIOUS WEED SEED.

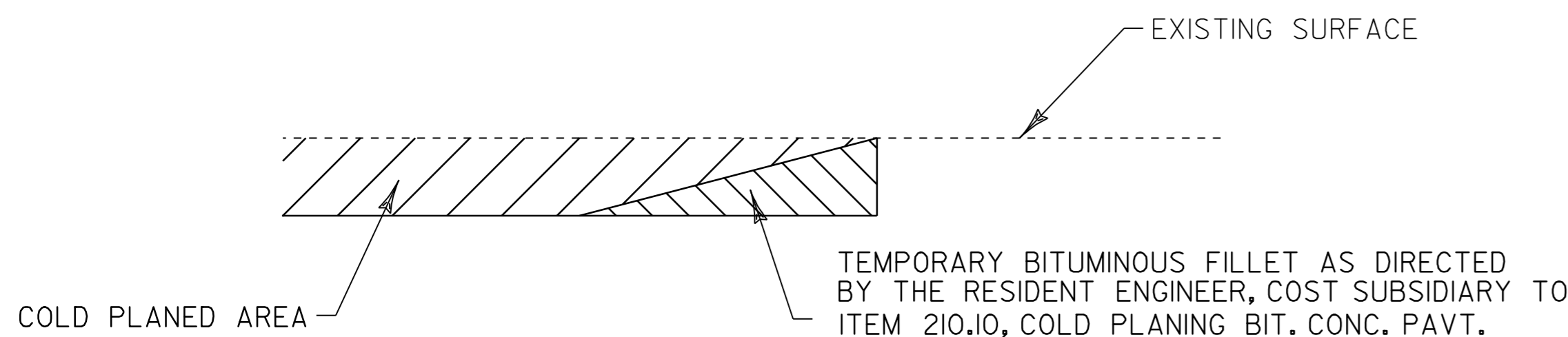
SEED:  
TO BE APPLIED PER SEEDING FORMULA DIRECTED BY THE RESIDENT ENGINEER

FERTILIZER:  
FORMULA 10-20-10 TO BE USED WITH SEED, APPLIED AT THE RATE OF 560 kg/ha (HYDRO SEEDERS MAY USE 19-19-19 FORMULA)

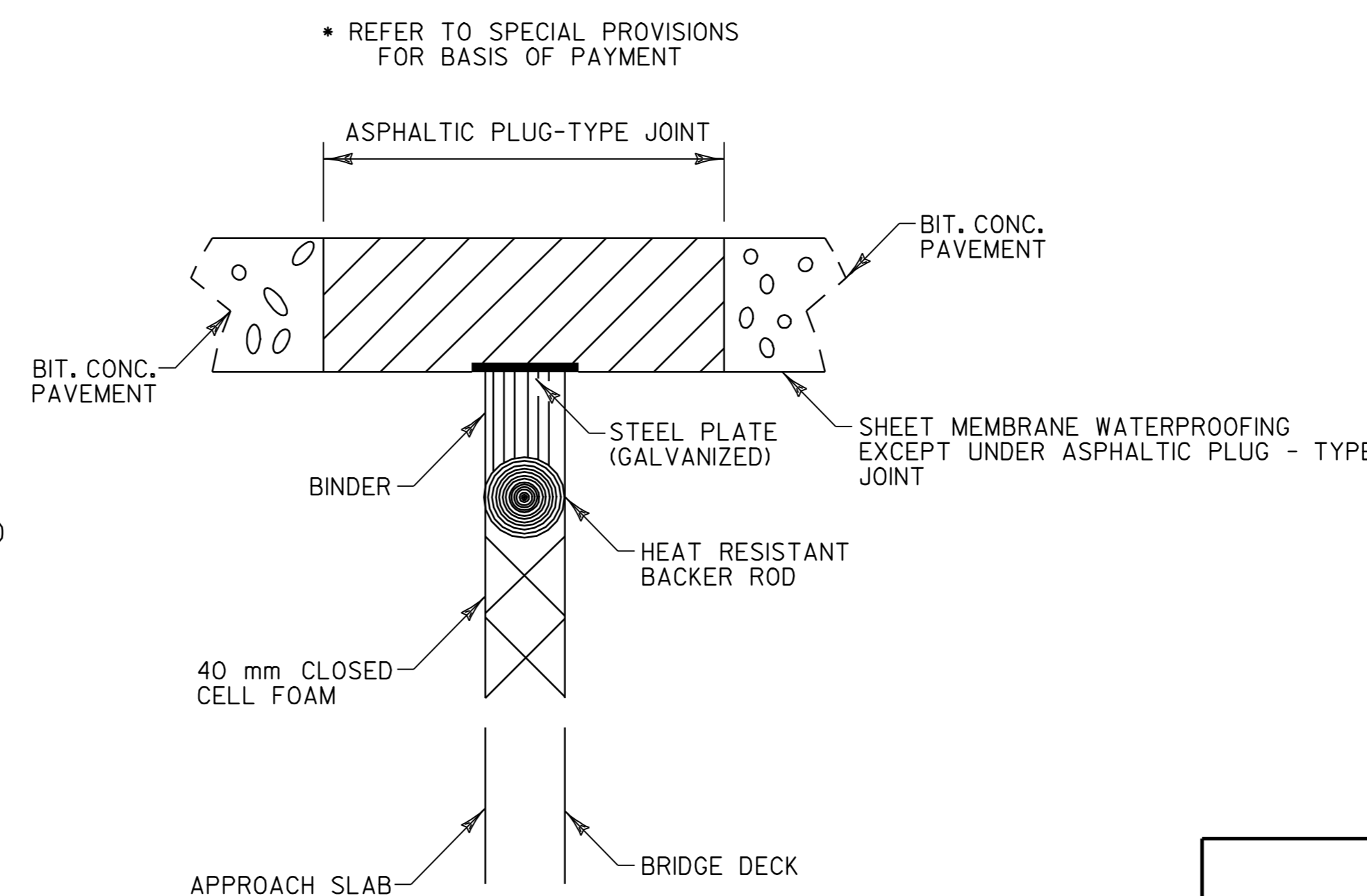
AGRICULTURAL LIMESTONE:  
TO BE APPLIED AT THE RATE OF 4500 kg/ha OR AS DIRECTED BY THE RESIDENT ENGINEER.

HAY MULCH:  
TO BE APPLIED ON EARTH SLOPES AT THE RATE OF 4500 kg/ha, OR AS DIRECTED BY THE RESIDENT ENGINEER.

TOPSOIL:  
TO BE USED WITH SEED AS INDICATED ON THE PLANS, OR AS DIRECTED BY THE RESIDENT ENGINEER.



### DETAIL AT VERTICAL COLD PLANE JOINTS



### ASPHALTIC PLUG JOINT DETAIL

BRIDGE 33 MT. HOLLY STA. 1+704.295 - ONE AT EACH ABUTMENT  
BRIDGE 42 MT. HOLLY STA. 9+725.266 - ONE AT EACH ABUTMENT

NOT TO SCALE

PROJECT  
TYPICALS  
SHEET #1

PROJECT NAME: LUDLOW-MT. HOLLY	
PROJECT NUMBER: NH 2327(1)S	
FILE NAME: /pave/01b024/pb024.dgn	PLOT DATE: 21-FEB-2006 13:53
PROJECT LEADER: WOOLAYER	DRAWN BY: LOCKE
DESIGNED BY: LOCKE	CHECKED BY: WOOLAYER
pb024ty1j	SHEET 2 OF 84