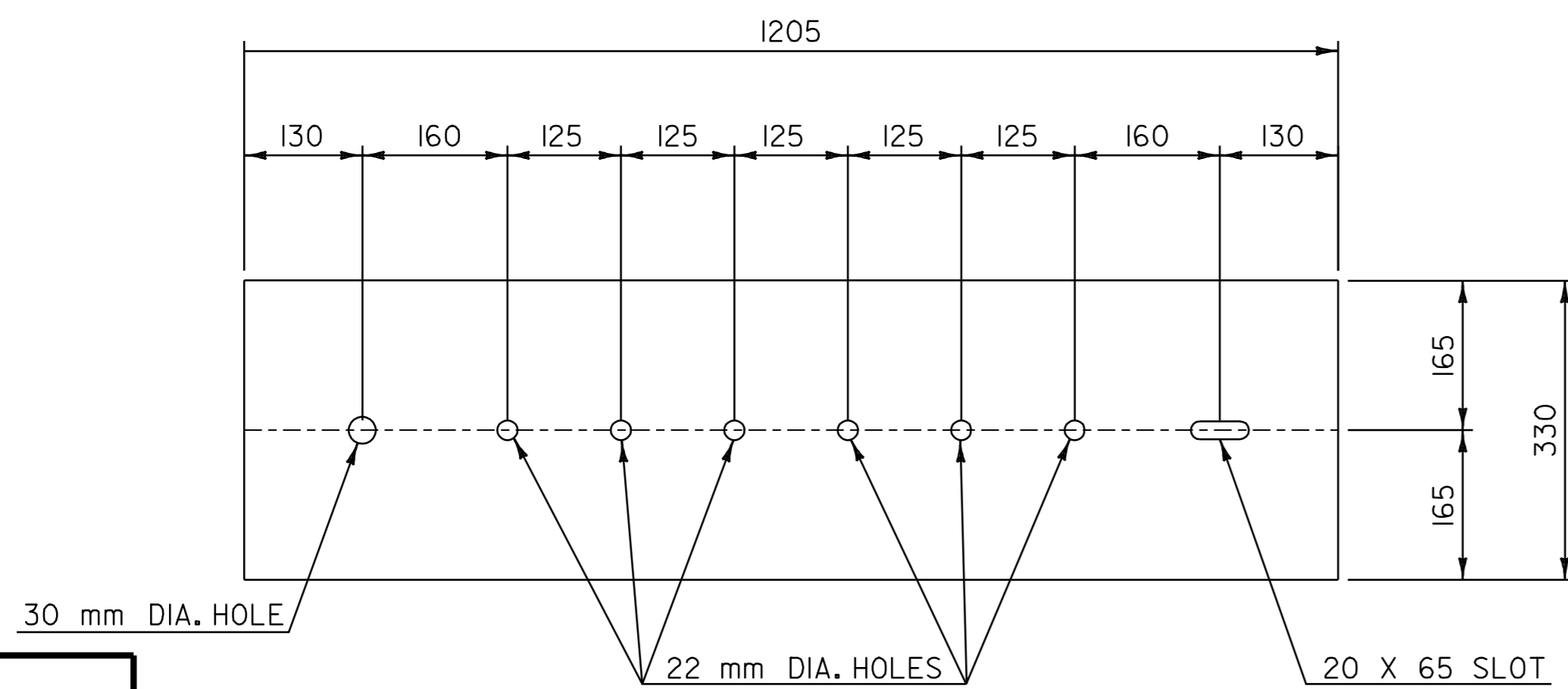
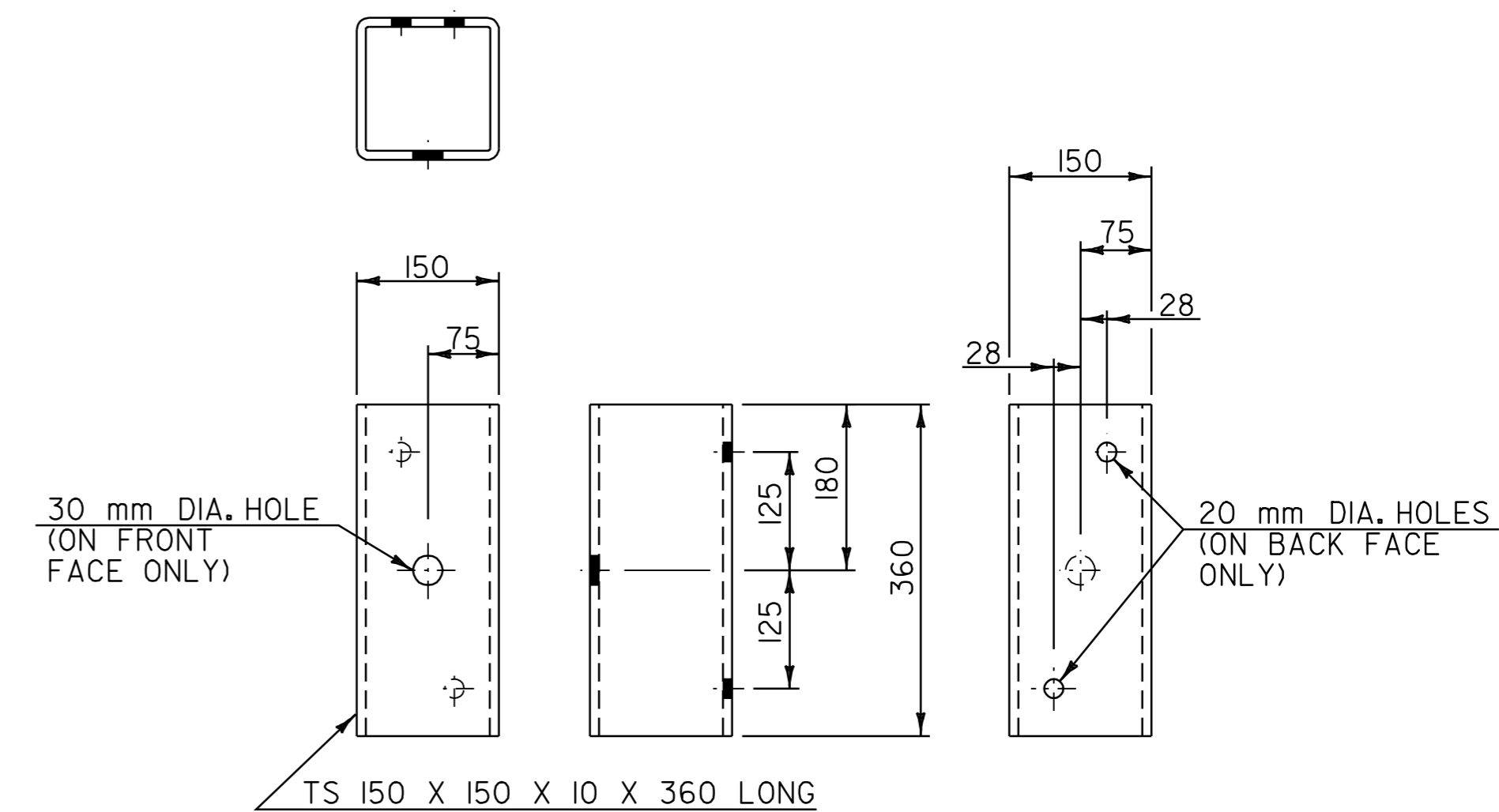
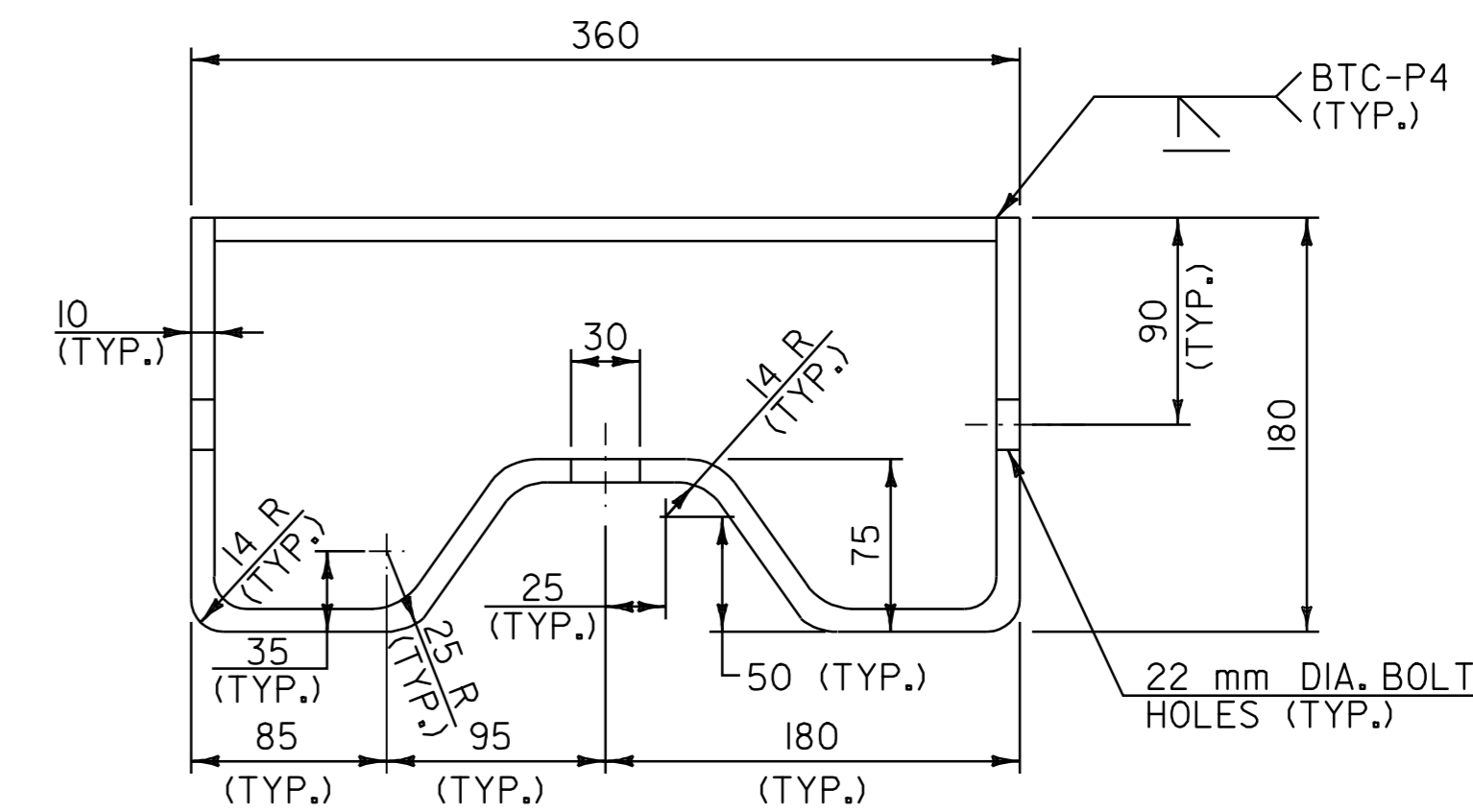
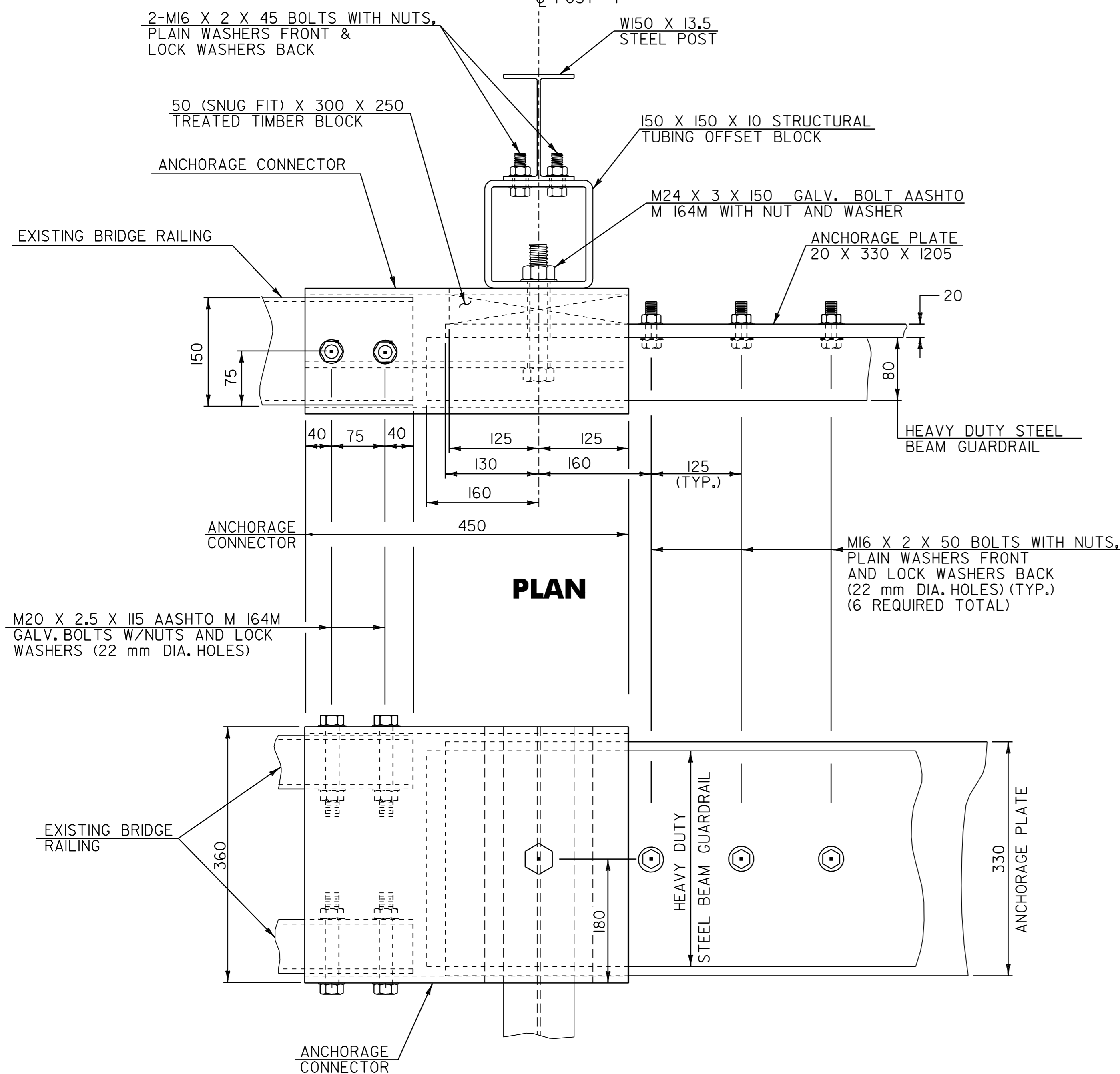


NOTES

1. REFER TO STANDARD G-IM FOR ADDITIONAL RAIL DETAILS.
2. ALL POSTS FOR HEAVY DUTY STEEL BEAM GUARDRAIL SHALL BE STEEL IN ACCORDANCE WITH SECTION 728 "GUARDRAIL, GUIDE POSTS AND BARRIERS" UNLESS OTHERWISE SPECIFIED IN THE CONTRACT.
3. APPROACH RAIL SPLICES SHALL LAP IN DIRECTION OF TRAFFIC FLOW.
4. ANCHORAGE CONNECTOR AND ANCHORAGE PLATE SHALL BE AASHTO M 270/M 270M, GRADE 250 GALVANIZED TO AASHTO M III/M IIIIM AFTER FABRICATION.
5. ALL BOLTS, NUTS AND WASHERS SHALL BE AASHTO M 164/M 164M GALVANIZED TO AASHTO M 232/M 232M AFTER FABRICATION.
6. STRUCTURAL TUBING OFFSET BLOCK SHALL BE AASHTO M 183/M 183M GALVANIZED TO AASHTO M III/M IIIIM AFTER FABRICATION.
7. APPROACH RAILING SHALL BE HEAVY DUTY STEEL BEAM FOR EITHER TYPE OF GUARDRAIL APPROACH SECTION.
8. ALLOWABLE DIMENSIONAL TOLERANCE FOR BENT SECTIONS IS ± 1.6 mm.
9. THE UNIT PRICES BID FOR EITHER TYPE OF GUARDRAIL APPROACH SECTION SHALL INCLUDE ANCHORAGE CONNECTOR, ANCHORAGE PLATE, HEAVY DUTY STEEL BEAM GUARDRAIL, POSTS, OFFSET BLOCKS, BLOCKING, BOLTS, AND ALL NECESSARY HARDWARE.



DATUM	
VERTICAL	N/A
HORIZONTAL	N/A

NOTE:
ALL DIMENSIONS IN MILLIMETERS EXCEPT WHERE OTHERWISE INDICATED.

BRIDGE APPROACH SECTION DETAIL SHEET 2	SURVEYED BY	N/A	DATE	N/A
	DRAWN BY	C.A.K.	DATE	2/02
	SQUAD LEADER	D.E.G.		
	DESIGN FILE NO.	pave/01b018/pb018.dgn		
	IPARM FILE	pb018brc4.i	DATE PLOTTED	10-JUL-2006 13:33
PROJ. NAME	SALISBURY - MIDDLEBURY			
PROJ. NO.	NH_231111S			
SHEET	65	OF	67	SHEETS