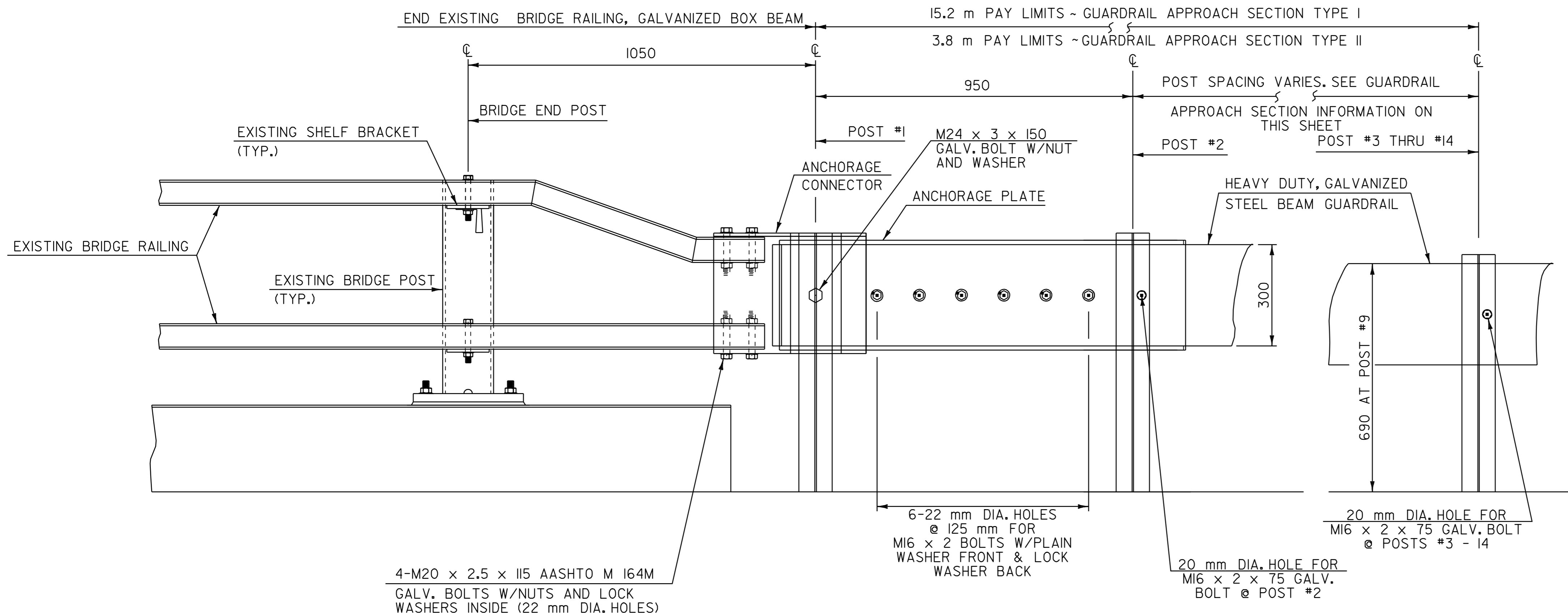


GUARDRAIL APPROACH SECTION TYPE I

POST NO.	SPACING
1	950
2	950
3	950
4	950
5	950
6	950
7	950
8	950
9	1.27 m
10	1.27 m
11	1.27 m
12	1.9 m
13	1.9 m
14	1.9 m

15.2 m PAY LENGTH GUARDRAIL APPROACH SECTION, TYPE I

PLAN



GUARDRAIL APPROACH SECTION TYPE II

POST NO.	SPACING
1	950
2	1.43 m
3	1.43 m
4	1.43 m

3.8 m PAY LENGTH GUARDRAIL APPROACH SECTION TYPE II

ELEVATION
BRIDGE APPROACH DETAIL
NOT TO SCALE

NOTE: ALL DIMENSIONS IN MILLIMETERS EXCEPT WHERE OTHERWISE NOTED.

BRIDGE APPROACH SECTION DETAIL SHEET 1	SURVEYED BY <u>N/A</u> DATE <u>N/A</u>
	DRAWN BY <u>C.A.K.</u> DATE <u>2/02</u>
	SQUAD LEADER <u>D.E.G.</u>
	DESIGN FILE NO. <u>pgve/Q1b018/pb018.dgn</u>
	IPARM FILE <u>pb018brc3.i</u> DATE <u>09-JUL-2006 13:35</u>
	PROJ. NAME <u>SALISBURY - MIDDLEBURY</u>
PROJ. NO. <u>NH_231111S</u>	
SHEET <u>64</u> OF <u>67</u> SHEETS	

DATUM	
VERTICAL	<u>N/A</u>
HORIZONTAL	<u>N/A</u>