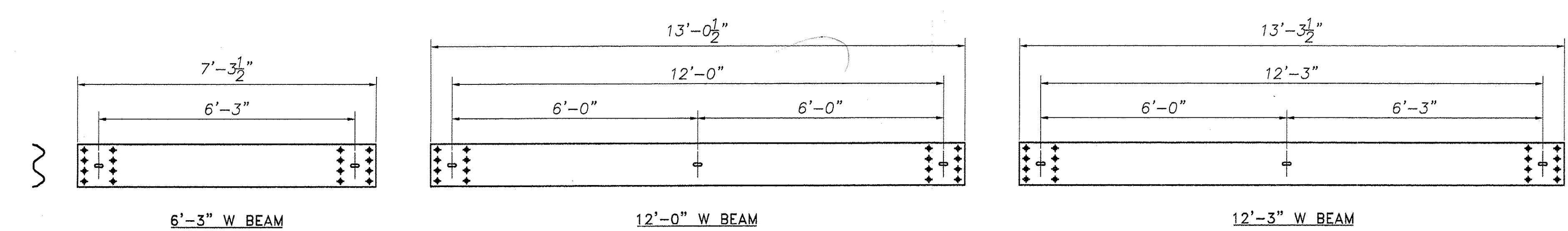
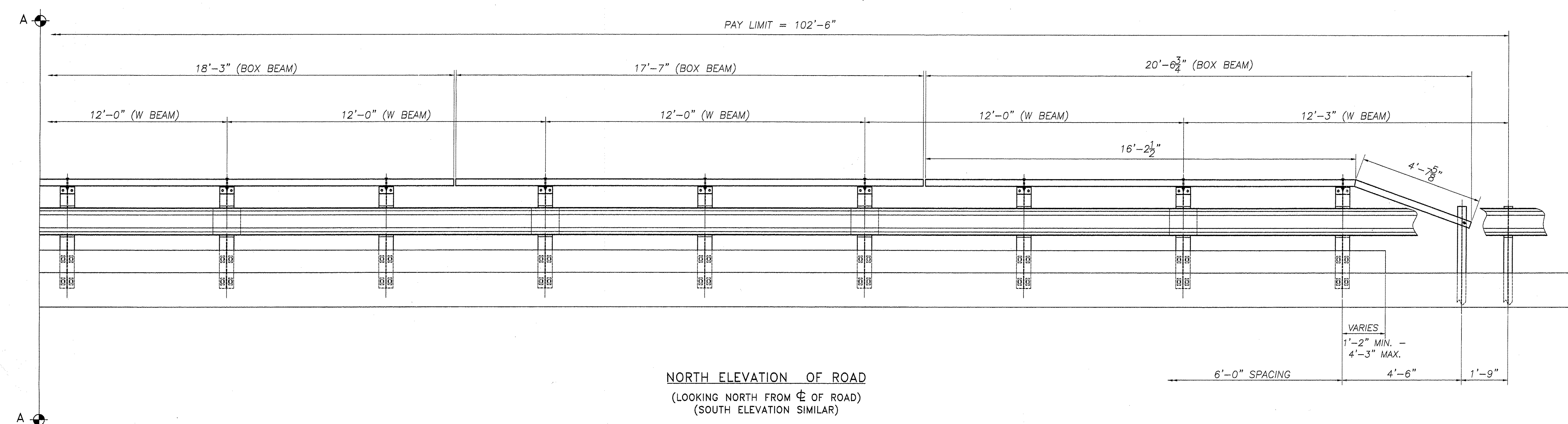


| BILL OF MATERIAL | | | | |
|----------------------------|--|-----------------|------------|------------|
| Qty. | Description | Size/Shape | Length | Material |
| POST | | | | |
| 32 | fascia mounted post | W8 x 24 | 4'-1" | A572 gr 50 |
| 36 | steel blockout | W8 x 24 | 14" | A572 gr 50 |
| 100 | hex bolt w/ 2 flat washers & hex nut | 5/8" | 2" | A307 |
| 136 | post bolt w/ flat washer & hex nut | 5/8" | 1 1/2" | A307 |
| 4 | post bolt w/ flat washer & hex nut | 5/8" | 7 1/2" | A307 |
| 8 | rec. washer with 11/16" hole | 3/16"x1 3/4" | 3" | A36 |
| 32 | rec. washer with slot | 3/16"x1 3/4" | 3" | A572 gr 50 |
| 32 | hand rail attachment angle | L5"x3 1/2"x3/8" | 6 1/2" | A36 |
| 8 | driven post | W6 x 8.5 | 6'-0" | A36 |
| W BEAM | | | | |
| 2 | w beam | 6'-3" | | M180 b2 |
| 14 | w beam | 12'-0" | | M180 b2 |
| 2 | w beam | 12'-3" | | M180 b2 |
| 144 | w beam splice bolt w/ DR nut | 5/8" | 1 1/4" | A307 |
| HAND RAIL | | | | |
| 4 | hand rail tube w/ drop end | TS 6"x3"x1/4" | 20'-6 3/4" | A500 gr B |
| 2 | hand rail tube | TS 6"x3"x1/4" | 17'-4" | A500 gr B |
| 2 | hand rail tube | TS 6"x3"x1/4" | 18'-3" | A500 gr B |
| 2 | hand rail tube | TS 6"x3"x1/4" | 22'-5" | A500 gr B |
| 32 | hex bolt w/2 flat washer & heavy hex nut | 5/8" | 4 1/2" | A307 |
| 16 | splice plate | PL 3/4" x 5" | 2'-7" | A36 |
| 32 | hex bolt w/ flat washer & heavy hex nut | 3/4" | 4 1/2" | A307 |
| ANCHORS (by others) | | | | |
| 64 | anchor u bolt w/ 4 hex nuts and 2 flat washers | 1" x 10" | 12" | A449 |
| 128 | plate washer | PL 3/16"x1 3/4" | 3" | A36 |



| REVISIONS | | |
|-----------|-------------------|---------|
| No. | Remarks | Date |
| 0 | Initial submittal | 7-13-06 |

SHOP DRAWING REVIEW

REVIEWED AS REQUIRED BY THE CONSTRUCTION CONTRACT DOCUMENTS AND APPROVED, BUT ONLY FOR CONFORMANCE TO THE DESIGN CONCEPT OF THE WORK, AND SUBJECT TO FURTHER LIMITATIONS AND REQUIREMENTS CONTAINED IN THE CONSTRUCTION CONTRACT DOCUMENTS.

REJECTED REVISE AND RESUBMIT FURNISH AS CORRECTED

CORRECTIONS OR COMMENTS MADE ON THE SHOP DRAWINGS OTHERWISE THIS REVIEW DOES NOT RELIEVE CONTRACTOR FROM COMPLIANCE WITH REQUIREMENTS OF THE DRAWINGS AND SPECIFICATIONS. THIS CHECK IS ONLY FOR REVIEW OF GENERAL CONFORMANCE WITH THE DESIGN CONCEPT OF THE PROJECT AND GENERAL COMPLIANCE WITH THE INFORMATION GIVEN IN THE CONTRACT DOCUMENTS. THE CONTRACTOR IS RESPONSIBLE FOR CONSIDERING AND CORRELATING ALL QUANTITIES AND DIMENSIONS, SELECTING FABRICATION PROCESSES AND TECHNIQUES OF CONSTRUCTION, COORDINATING HIS WORK WITH THAT OF ALL OTHER TRADES, AND PERFORMING HIS WORK IN A SAFE AND SATISFACTORY MANNER.

VHB Vermont Hengstenhusen Group, Inc.
Engineers, Planners, and Scientists
Six Bedford Farms, Keenon Rd.
Burlington, NH 05410 802 644 0009

Job Number: 51335
Reviewed By: J.S.D.
Date: 7/31/06

HIGHWAY SAFETY CORP.
GLASTONBURY, CT

ITEM # 525.43 FASCIA MOUNTED HDSB WITH HANDRAIL
PROJECT NUMBER: TH2-0104
TOWN OF GRAFTON, VT
COUNTY OF WINDHAM
VT ROUTE 121, BRIDGE NO. 16G

GENERAL CONTRACTOR: F.R. LAFAYETTE INC.

DRAWN: MHM
CHECKED: [Signature]
DATE: 7/11/06
SCALE: NTS
HSC REFERENCE NO.: 1559
SHEET NO.: 1 of 2

