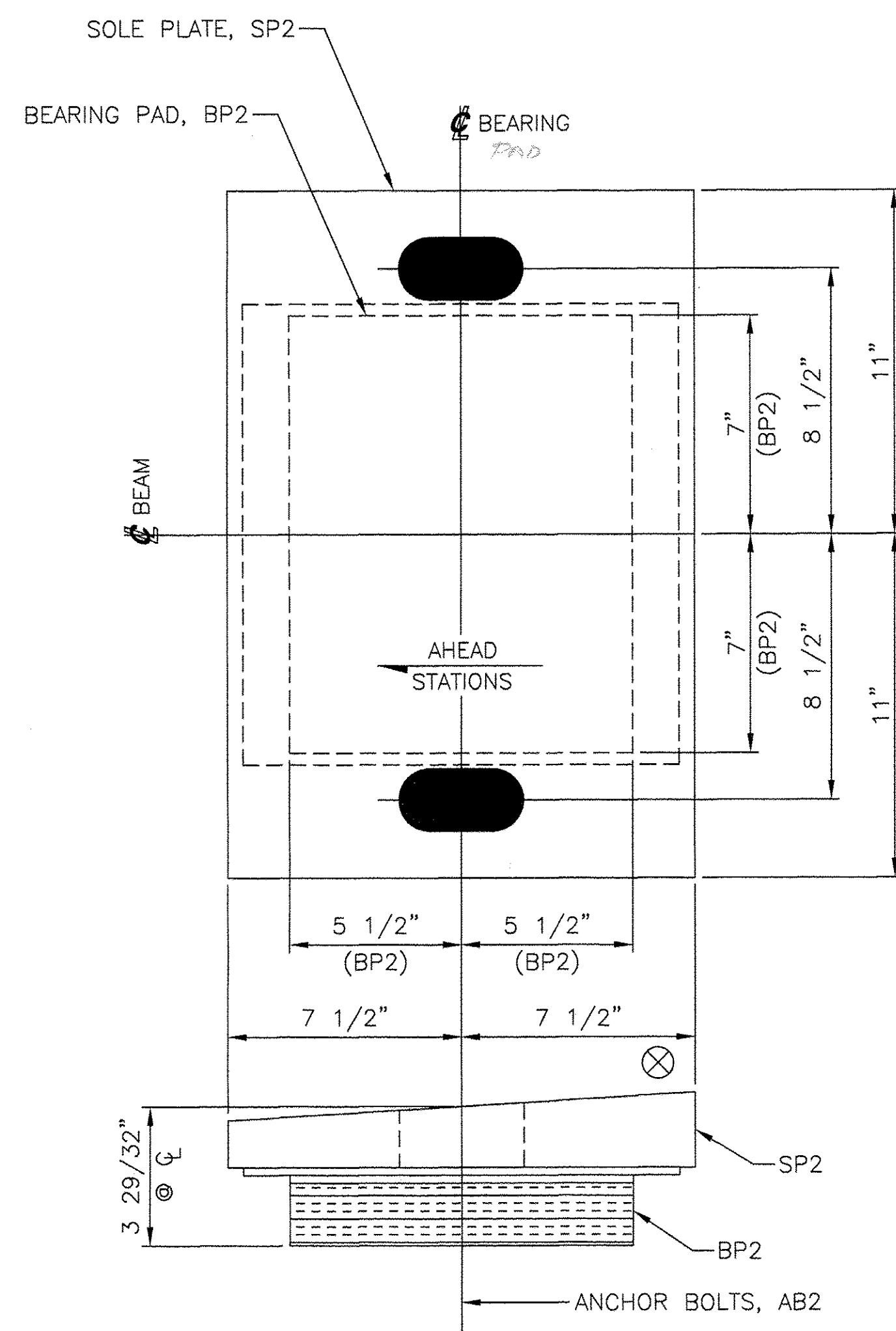


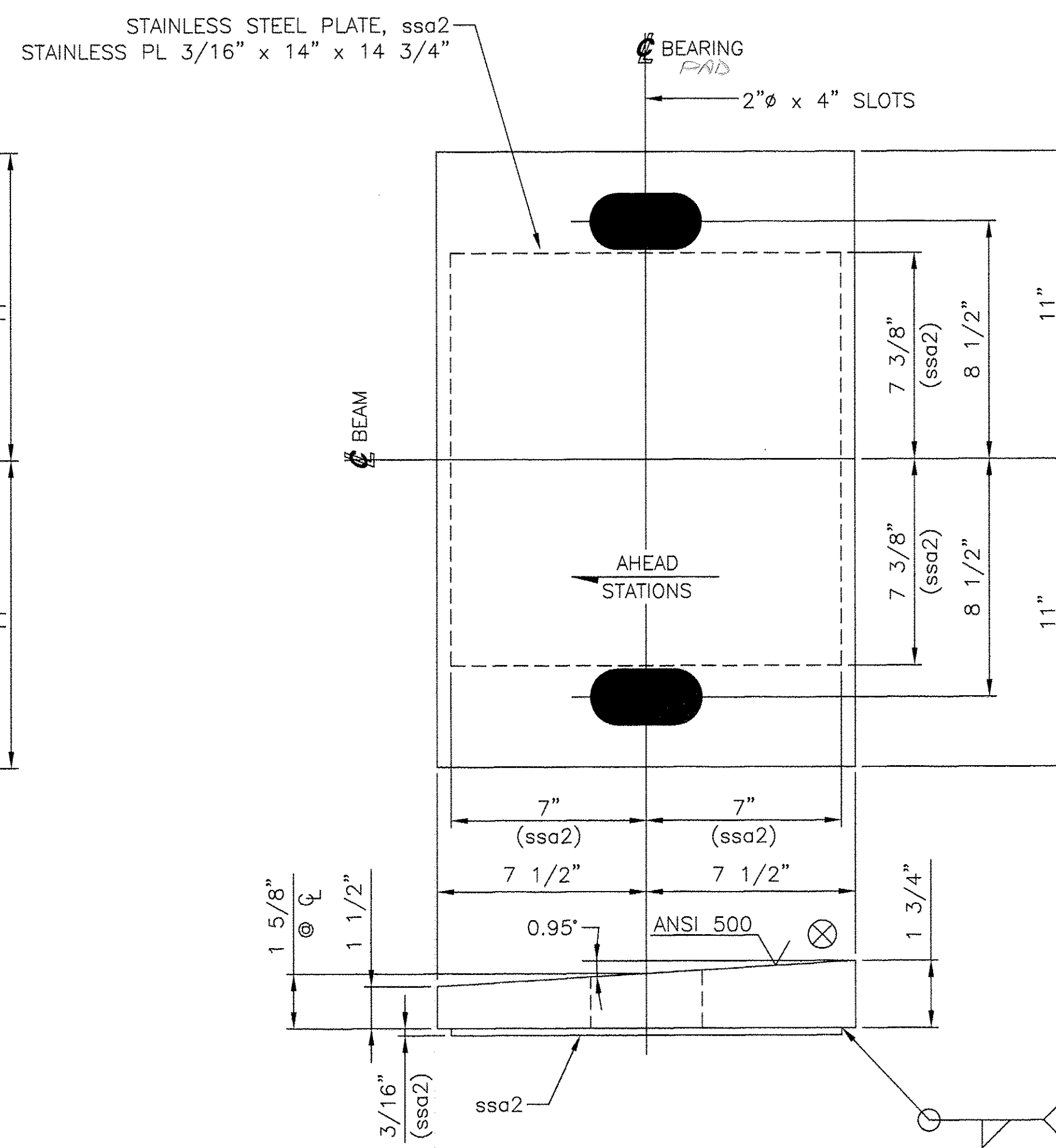
MARK	QTY	DESCRIPTION	IN	16ths	FAB MARK	MILL MARK	WEIGHT
SP2	4	PL 1 3/4" x 15"	22	0	.	METALIZED	655
.	4	STAINLESS PL 3/16" x 14"	14	12	ssa2	A240 TYPE 304	48
BP2	4	PREF. PAD 2" x 11"	14	0	.	AASHTO 18.4.9.1	64
.	4	UNFILLED PTFE 3/32" x 11"	14	0	tfe2	D1457	5

TOTAL = 772



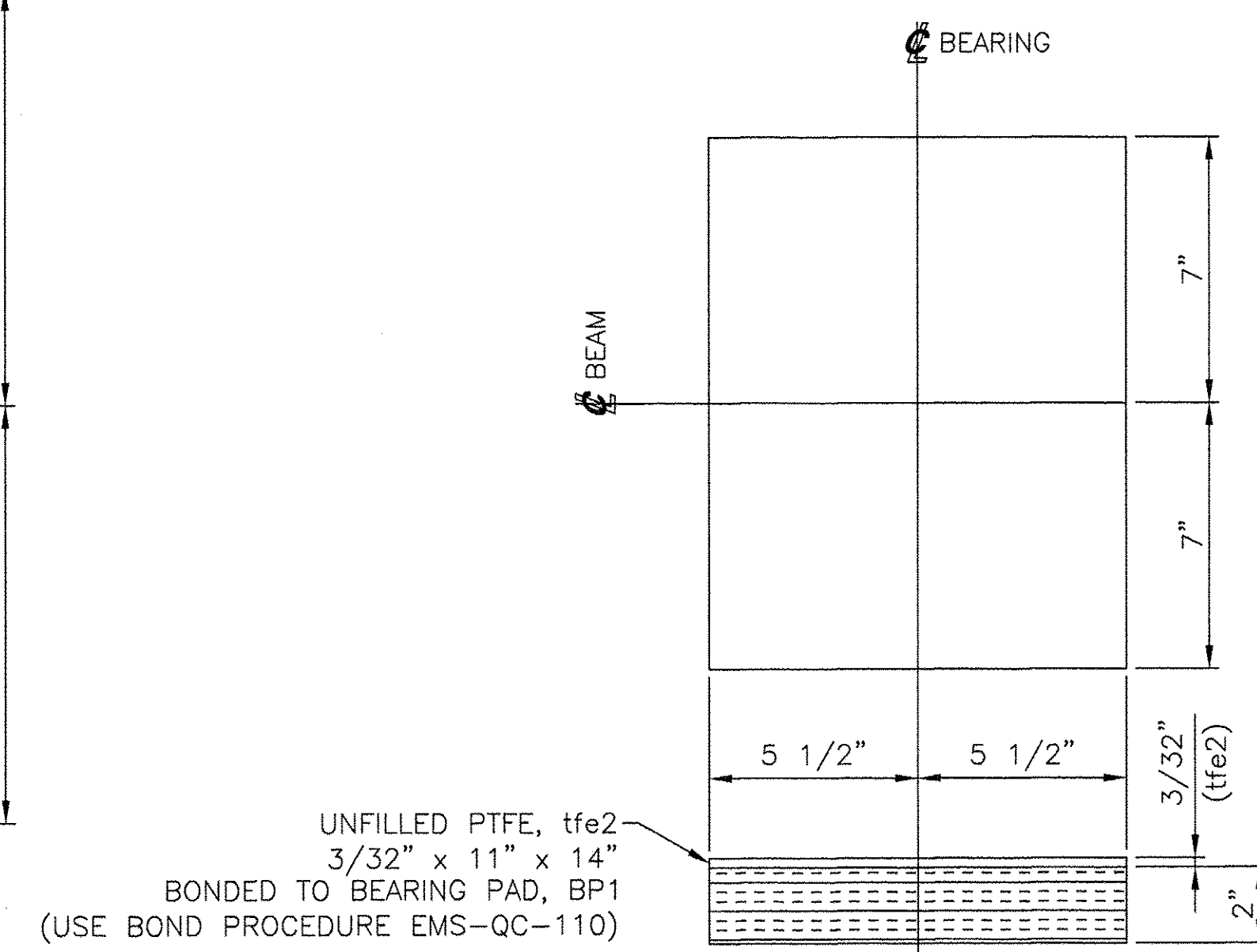
4 EXPANSION BEARING ASSEMBLIES, EBA-1

LOCATE AT
ABUTMENT 2
BEAMS 1 THRU 4



4 EXPANSION SOLE PLATES, SP2

PL 1 3/4" x 15" x 22"
(METALIZED)
USE WITH
EXPANSION BEARING ASSEMBLY, EBA-1



4 BEARING PADS, BP2
PREFORMED FABRIC PAD 2" x 11" x 14"
FABRICATED IN ACCORDANCE WITH AASHTO 18.4.9.1
USE WITH
EXPANSION BEARING ASSEMBLY, EBA-1

SHOP DRAWING REVIEW

REVIEWED AS REQUIRED BY THE CONSTRUCTION CONTRACT DOCUMENTS AND APPROVED, BUT ONLY FOR CONFORMANCE TO THE DESIGN CONCEPT OF THE WORK, AND SUBJECT TO FURTHER LIMITATIONS AND REQUIREMENTS CONTAINED IN THE CONSTRUCTION CONTRACT DOCUMENTS.

REJECTED REVISE AND RESUBMIT FURNISH AS CORRECTED

CONVECTIONS OR COMMENTS MADE ON THE SHOP DRAWINGS DURING THIS REVIEW DO NOT RELIEVE CONTRACTOR FROM COMPLIANCE WITH REQUIREMENTS OF THE DRAWINGS AND SPECIFICATIONS. THIS CHECK IS ONLY FOR REVIEW OF GENERAL CONFORMANCE WITH THE DESIGN CONCEPT OF THE PROJECT AND GENERAL COMPLIANCE WITH THE INFORMATION GIVEN IN THE CONTRACT DOCUMENTS. THE CONTRACTOR IS RESPONSIBLE FOR CONFIRMING AND CORRELATING ALL QUANTITIES AND DIMENSIONS; SELECTING FABRICATION PROCESSES AND TECHNIQUES OF CONSTRUCTION; COORDINATING HIS WORK WITH THAT OF ALL OTHER TRADES; AND PERFORMING HIS WORK IN A SAFE AND SATISFACTORY MANNER.

VHB <small>Vermont Hanger Erectors, Inc. Engineers, Planners, and Scientists Six Bedford Farms, Milton Rd. Bedford, NH 03110 603-844-0800</small>	Job Number: <u>51235</u> Reviewed By: <u>MAC/L56</u> Date: <u>3/24/06</u>
---	---

SEE SHEET 1 FOR SHOP NOTES.

STATE OF VERMONT
AGENCY OF TRANSPORTATION
TH 1 (CAMBRIDGEPORT BRIDGE)
OVER THE SAXTONS RIVER
TOWN OF GRAFTON, VERMONT
PROJECT NO. TH2-0104
BRIDGE NO. 16G

COSMEC, INC. 70 SOUTH STREET
WALPOLE, MA. 02081

SCALE: NONE DRAWN BY: JEP CHECKED BY: PJM
SHEET 2 OF 3 DATE: 02/06 DATE: 02/06

COSMEC BEARING

CUSTOMER: FRANK W. WHITCOMB S.O. NUMBER DRAWING NUMBER REV.
CONSTRUCTION CORPORATION 60519 4678 0

REV.	BY:	DATE	CK'D BY:	DATE
---	---	---	---	---