

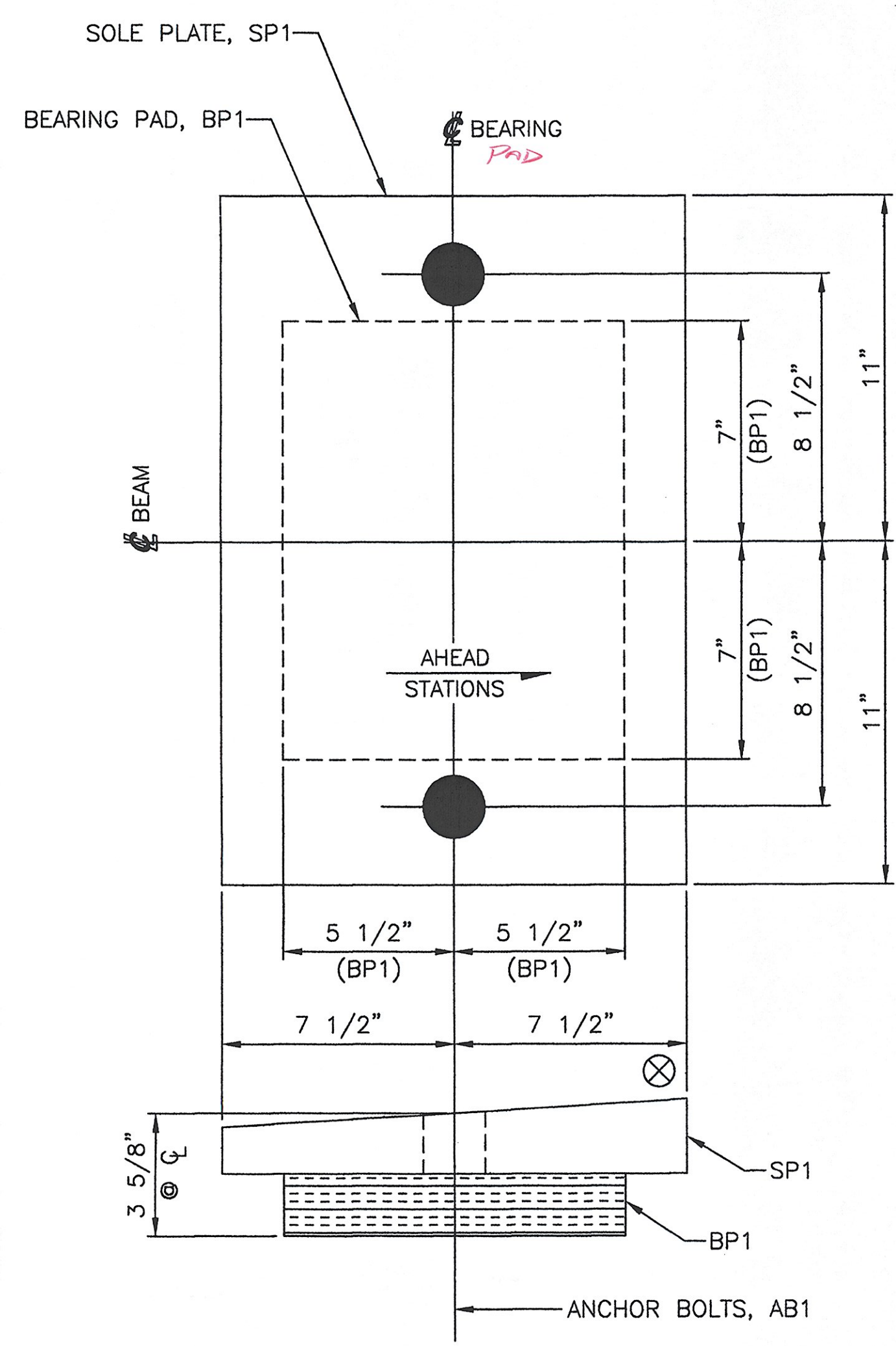
MARK	QTY	DESCRIPTION	IN	16ths	FAB MARK	MILL MARK	WEIGHT
SP1	4	PL 1 3/4" x 15"	22	0		METALIZED	655
BP1	4	PREF. PAD 2" x 11"	14	0		AASHTO 18.4.9.1	64
TOTAL =							719

SHOP NOTES:

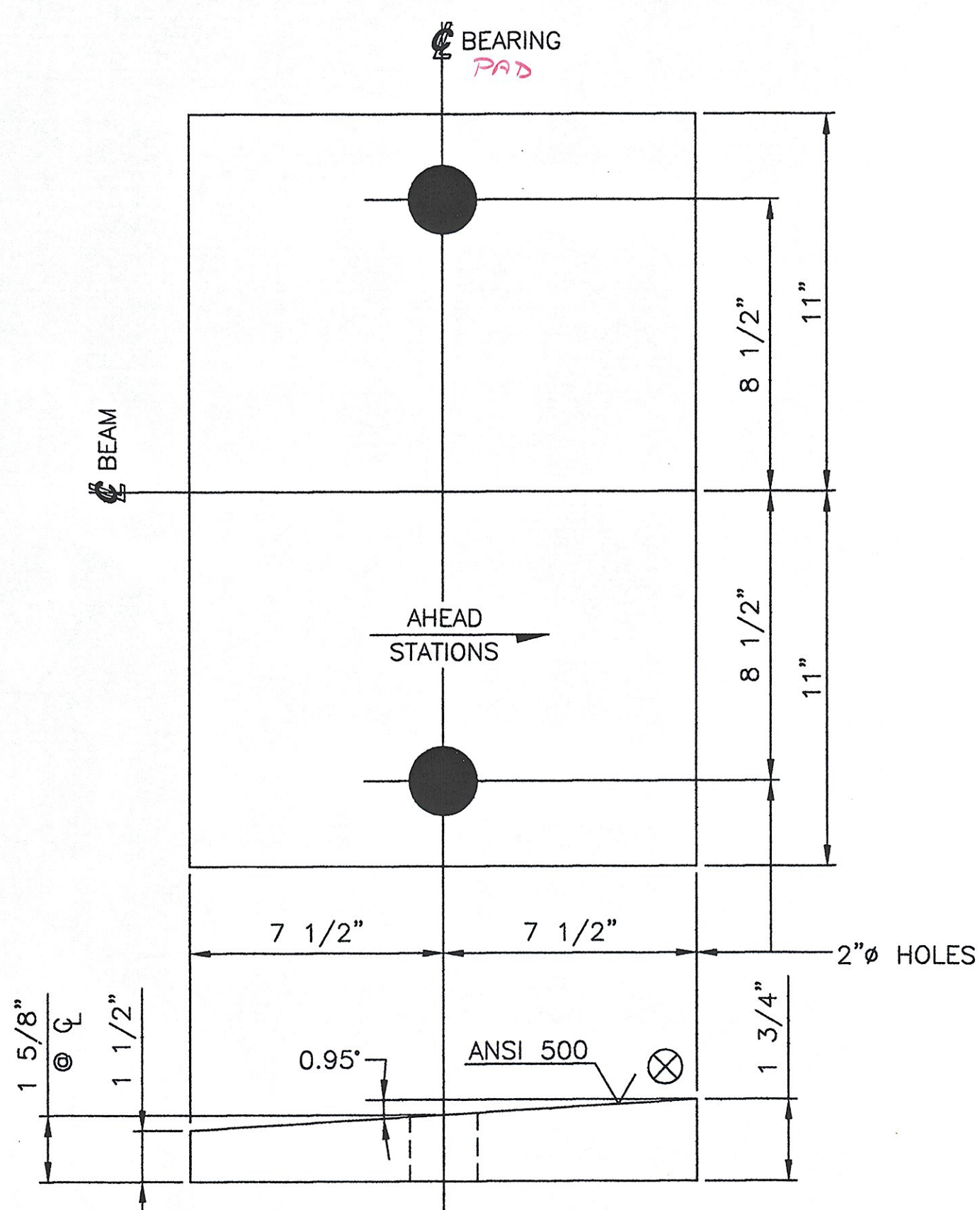
- SOLE PLATES: AASHTO M270, GR. 36.
- PREFORMED FABRIC PADS: IN ACCORDANCE WITH AASHTO DIVISION II, SECTION 18.4.9.1.
- STAINLESS STEEL: ASTM A240, TYPE 304, WITH A 20 RMS OR BETTER FINISH ON SLIDING SURFACE.
- PTFE: ASTM D1457, VIRGIN, UNFILLED.
- ANCHOR BOLTS: F1554, GR. 55, GALVANIZED.
- PLATE WASHERS: ASTM A36 OR EQUIVALENT, GALVANIZED.
- MATERIAL NOTED AS M270, GR. 36 MAY BE AASHTO M270, GR. 36, ASTM A709, GR. 36 OR ASTM A36.
- FABRICATION TOLERANCES SHALL BE IN ACCORDANCE WITH SECTION 531.04.d OF THE STATE STANDARDS.
- ALL FREE EDGES OF PLATES TO BE METALIZED SHALL BE ROUNDED TO 1/16" RADIUS.
- SOLE PLATES SHALL BE BLAST CLEANED TO SSPC-SP5, "WHITE METAL" AND METALIZED IN ACCORDANCE WITH AWS C 2.18, TO A MINIMUM THICKNESS OF 6 MILS WITH 99.9% PURE ZINC AND SEALED WITH #90290 METCO ALS.
- COSMEC, INC. WILL BLAST THE MATERIAL AND APPLY THE REQUIRED COATING IN ACCORDANCE WITH THE MANUFACTURER'S RECOMMENDATIONS AND IN ACCORDANCE WITH ALL APPLICABLE STANDARD SPECIFICATIONS AND SPECIAL PROVISIONS. COSMEC, INC. WILL PACKAGE AND LOAD THE BEARINGS FOR SHIPMENT IN SUCH A MANNER AS TO INSURE NO DAMAGE IS DONE TO THE COATING. ANY DAMAGE TO THE COATING IN THE FIELD IS THE SOLE RESPONSIBILITY OF THE CONTRACTOR AND IS TO BE REPAIRED AT THE CONTRACTOR'S EXPENSE.
- MATERIAL NOTED AS GALVANIZED SHALL BE GALVANIZED IN ACCORDANCE WITH AASHTO M111 (ASTM A123) OR AASHTO M232 (ASTM A153) AS APPLICABLE.
- ALL SURFACES OF PLATES SHALL BE SMOOTH AND STRAIGHT.
- ⊗ SHOP TO MARK HIGH SIDE OF PLATE.
- COSMEC, INC. REPRESENTATIVE: MR. MATT McANDREWS (508) 668-6600

SHALL HAVE A MIRROR FINISH OF LESS THAN 0.25 RMS  
10 micro inches

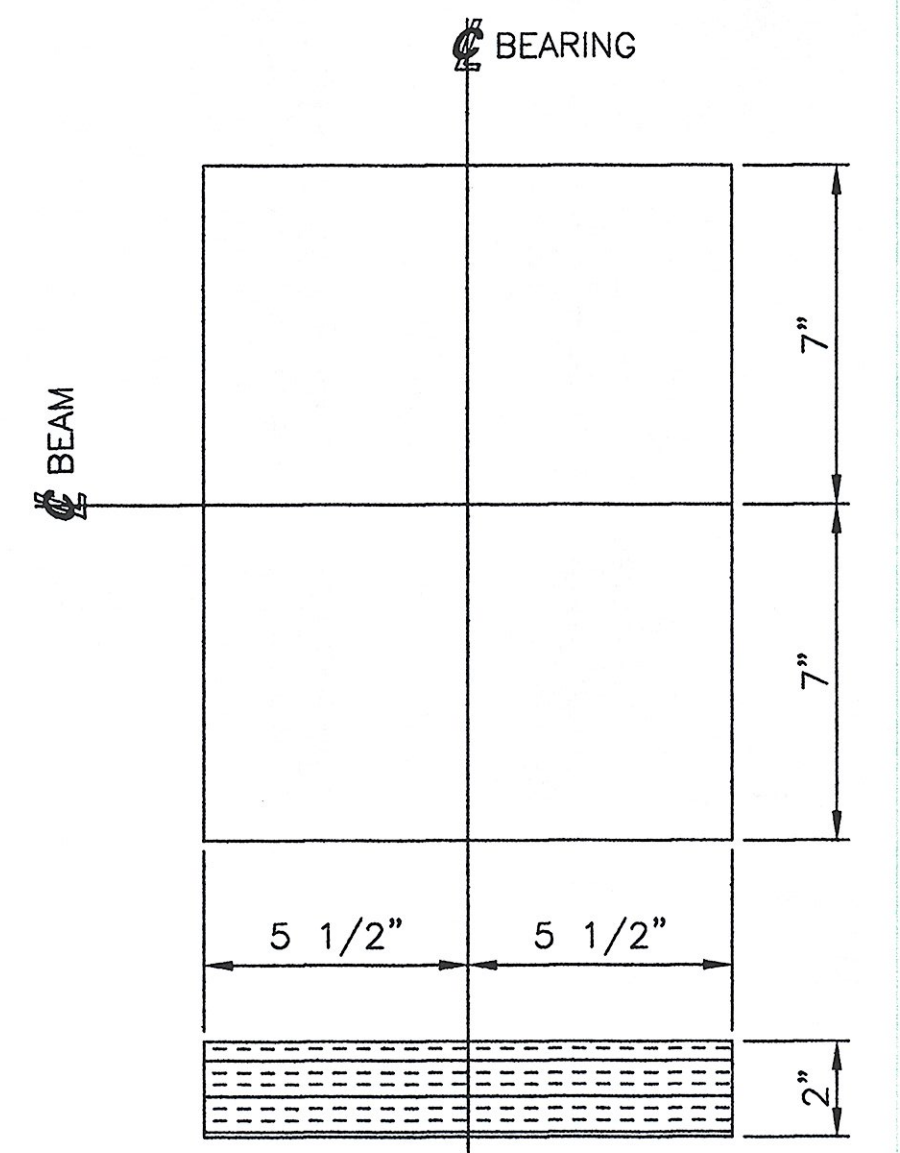
ASTM 4894  
New # Spec  
I followed to draft 8/15 loc McAndrews



4 FIXED BEARING ASSEMBLIES, FBA-1  
LOCATE AT ABUTMENT 1 BEAMS 1 THRU 4



4 FIXED SOLE PLATES, SP1  
PL 1 3/4" X 15" X 22" (METALIZED)  
USE WITH FIXED BEARING ASSEMBLY, FBA-1



4 BEARING PADS, BP1  
PREFORMED FABRIC PAD 2" X 11" X 14"  
FABRICATED IN ACCORDANCE WITH AASHTO 18.4.9.1  
USE WITH FIXED BEARING ASSEMBLY, FBA-1

**SHOP DRAWING REVIEW**

REVIEWED AS REQUIRED BY THE CONSTRUCTION CONTRACT DOCUMENTS AND APPROVED, BUT ONLY FOR CONFORMANCE TO THE DESIGN CONCEPT OF THE WORK, AND SUBJECT TO FURTHER LIMITATIONS AND REQUIREMENTS CONTAINED IN THE CONSTRUCTION CONTRACT DOCUMENTS.

REJECTED  REVISE AND RESUBMIT  FURNISH AS CORRECTED

CORRECTIONS OR COMMENTS MADE ON THE SHOP DRAWINGS DURING THIS REVIEW DO NOT RELIEVE CONTRACTOR FROM COMPLIANCE WITH REQUIREMENTS OF THE DRAWINGS AND SPECIFICATIONS. THIS CHECK IS ONLY FOR REVIEW OF GENERAL CONFORMANCE WITH THE DESIGN CONCEPT OF THE PROJECT AND GENERAL COMPLIANCE WITH THE INFORMATION GIVEN IN THE CONTRACT DOCUMENTS. THE CONTRACTOR IS RESPONSIBLE FOR CONFIRMING AND CORRELATING ALL QUANTITIES AND DIMENSIONS; SELECTING FABRICATION PROCESSES AND TECHNIQUES OF CONSTRUCTION; COORDINATING HIS WORK WITH THAT OF ALL OTHER TRADES; AND PERFORMING HIS WORK IN A SAFE AND SATISFACTORY MANNER.

**VHB** Vanasse Hangen Brustlin, Inc.  
Engineers, Planners, and Scientists  
Six Bedford Farms, Kilton Rd.  
Bedford, NH 05110 603 644 0888

Job Number: 51335  
Reviewed By: MAC/LSL  
Date: 3/24/06

STATE OF VERMONT  
AGENCY OF TRANSPORTATION  
TH 1 (CAMBRIDGEPORT BRIDGE)  
OVER THE SAXTONS RIVER  
TOWN OF GRAFTON, VERMONT  
PROJECT NO. TH2-0104  
BRIDGE NO. 16G

**COSMEC, INC.** 70 SOUTH STREET WALPOLE, MA 02081

SCALE: NONE DRAWN BY: JEP CHECKED BY: PJM  
SHEET 1 OF 3 DATE: 02/06 DATE: 02/06

COSMEC BEARING

CUSTOMER: FRANK W. WHITCOMB CONSTRUCTION CORPORATION S.D. NUMBER: 60519 DRAWING NUMBER: 4677 REV: 0

REV.	BY:	DATE	CHK'D BY:	DATE
---	---	---	---	---