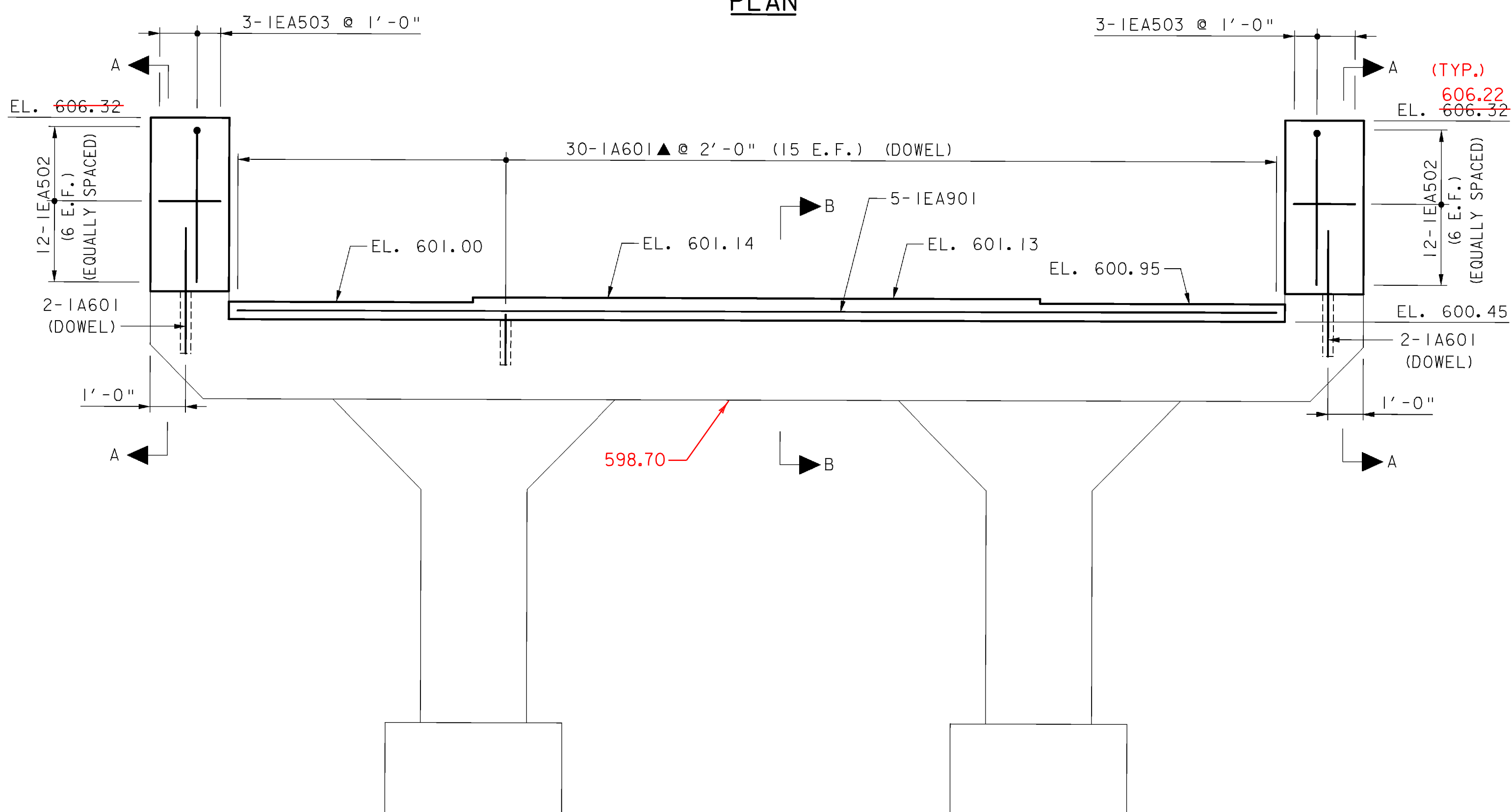


PLAN

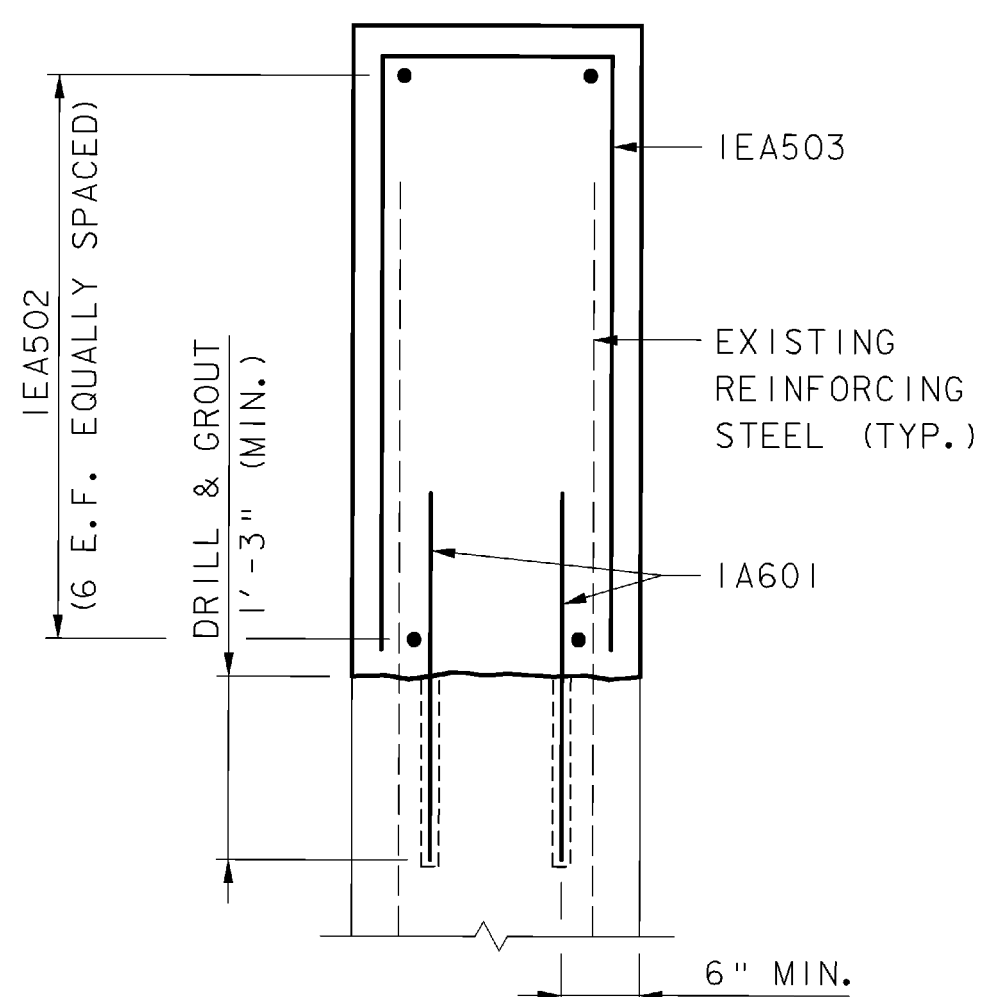


ELEVATION

ABUTMENT NO. 1

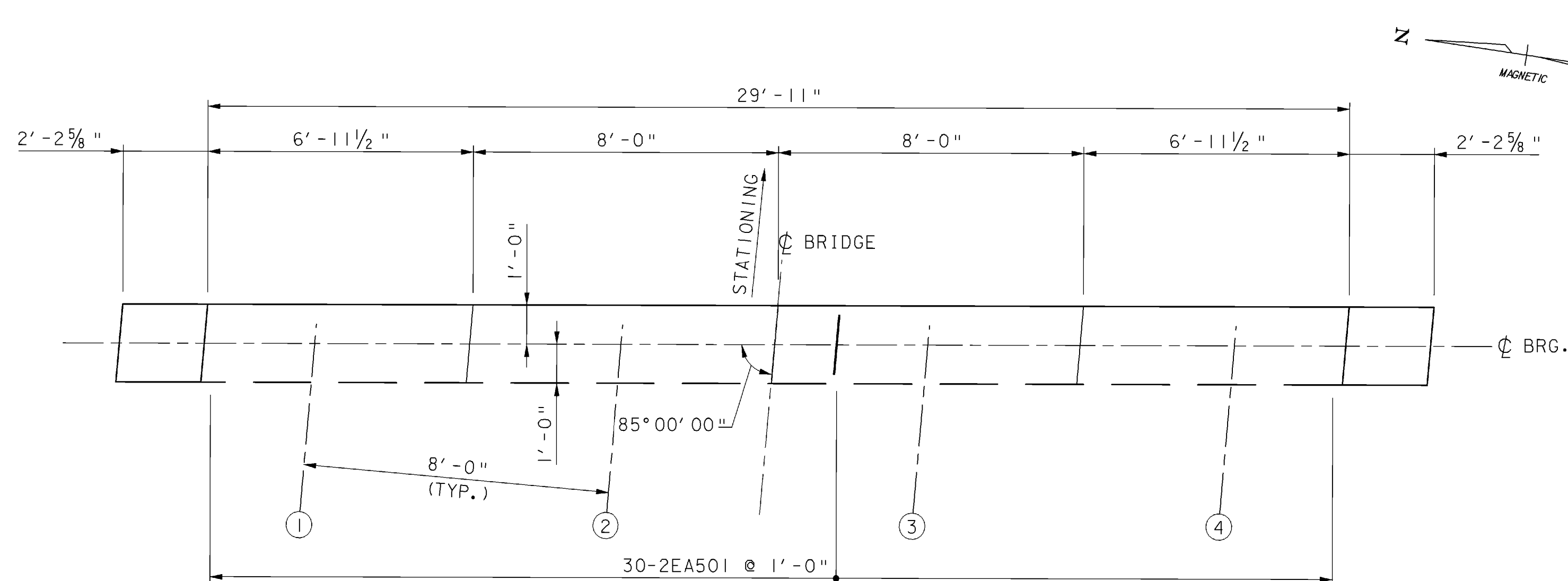
SCALE: 3/8" = 1'-0"

THIS SHEET SUPERSEDES CONTRACT PLAN SHEET 35 DATED 6/05. REVISIONS ON THIS SHEET REFLECT CHANGES IN DESIGN AND DETAILS AS PER CHANGE ORDER NO. 2, SUBSTITUTING NEW STEEL BEAMS FOR RECYCLED BEAMS.

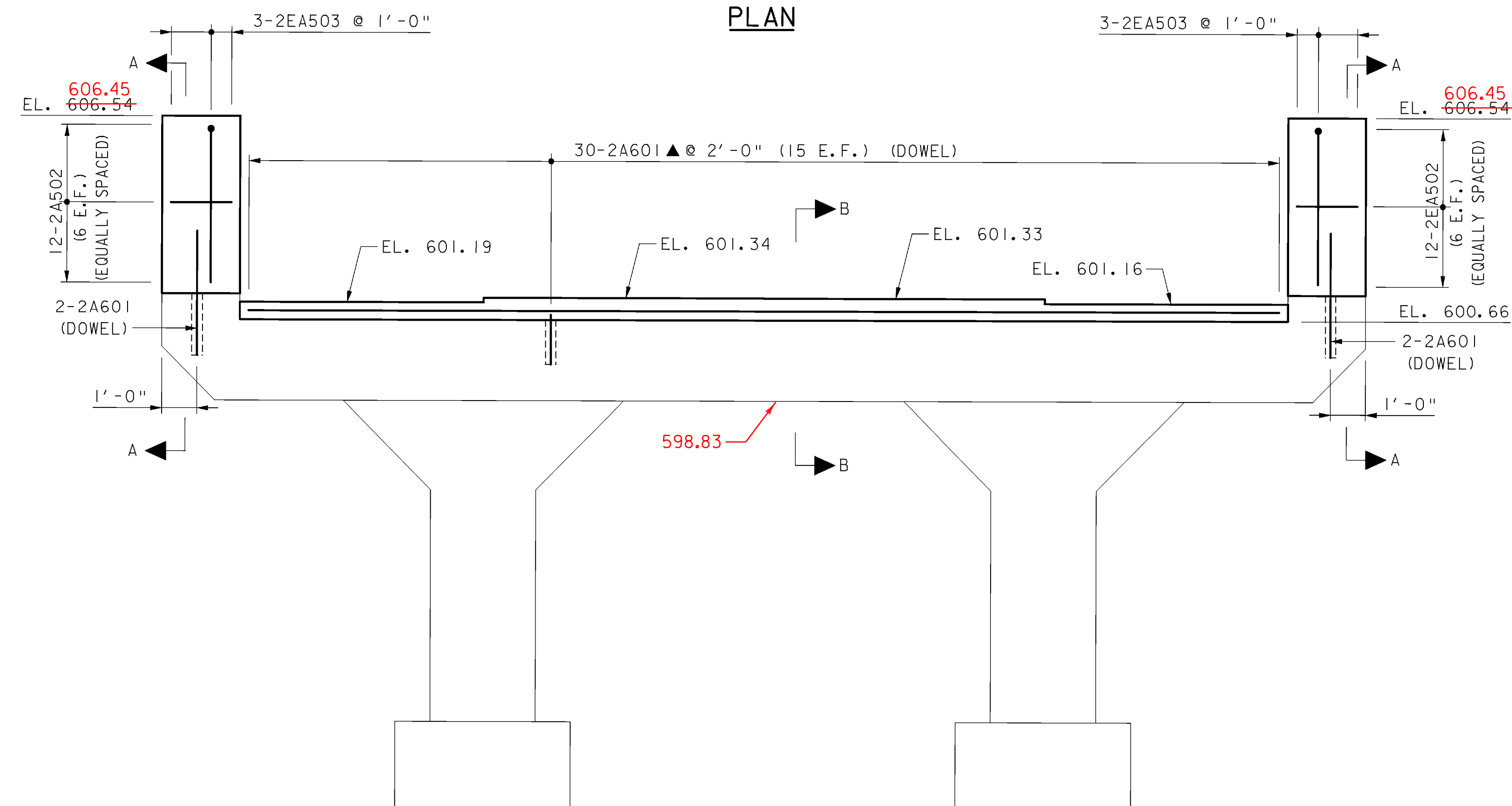


SECTION A-A

(ABUTMENT 1 SHOWN, ABUTMENT 2 SIMILAR)
SCALE: 3/4" = 1'-0"



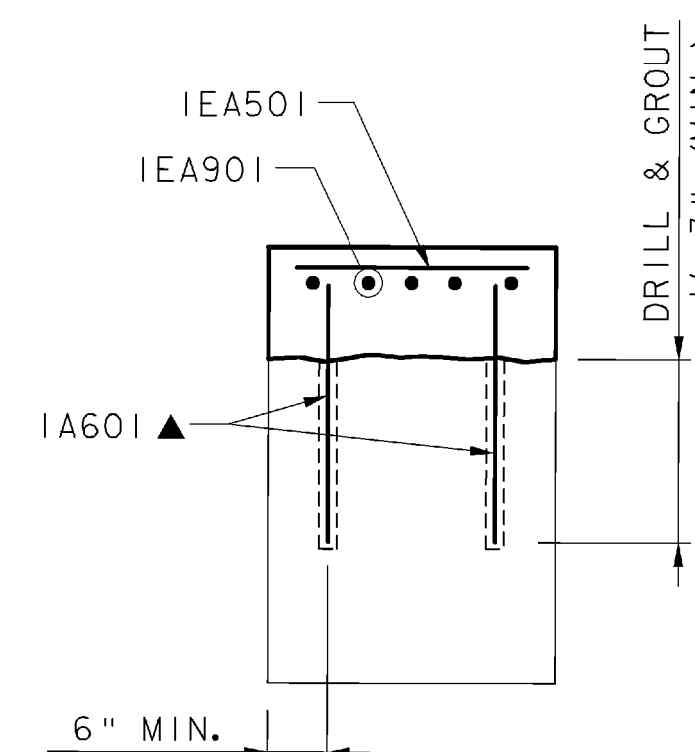
PLAN



ELEVATION

ABUTMENT NO. 2

SCALE: 3/8" = 1'-0"



SECTION B-B

(ABUTMENT 1 SHOWN, ABUTMENT 2 SIMILAR)
SCALE: 3/4" = 1'-0"

KEY

- E.F. = EACH FACE
- ▲ = BARS TO BE CUT IN FIELD

TOWN OF GRAFTON
CAMBRIDGEPORT BRIDGE

Town Of	GRAFTON	Bridge No.	16G
Highway No.	TH 1	Log Sta.	
TH 1 (CAMBRIDGEPORT BRIDGE) OVER THE SAXTONS RIVER		Surv. Sta.	
ABUTMENT DETAILS			
Designed By	J. T. KLEIN	Drawn By	B. J. MASSE
Checked By	K. G. KRETSCH	Date	12/05
		Bridge Design Supervisor	M. A. COLGAN
PROJECT	GRAFTON	PROJECT NO.	TH2-0104
I.G.C. Info.	File No. 51335AMI		

VHB Vanasse Hangen Brustlin, Inc.