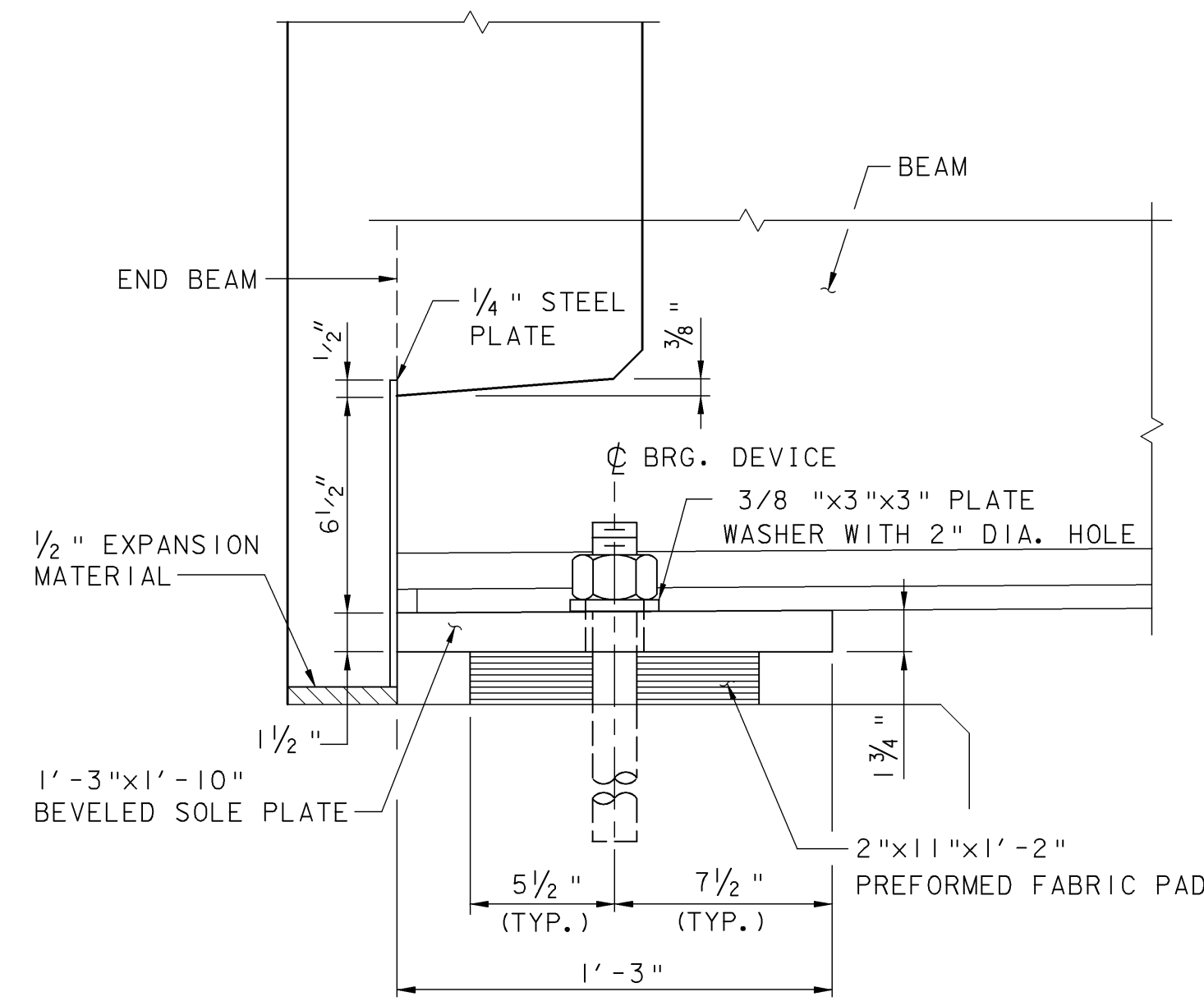
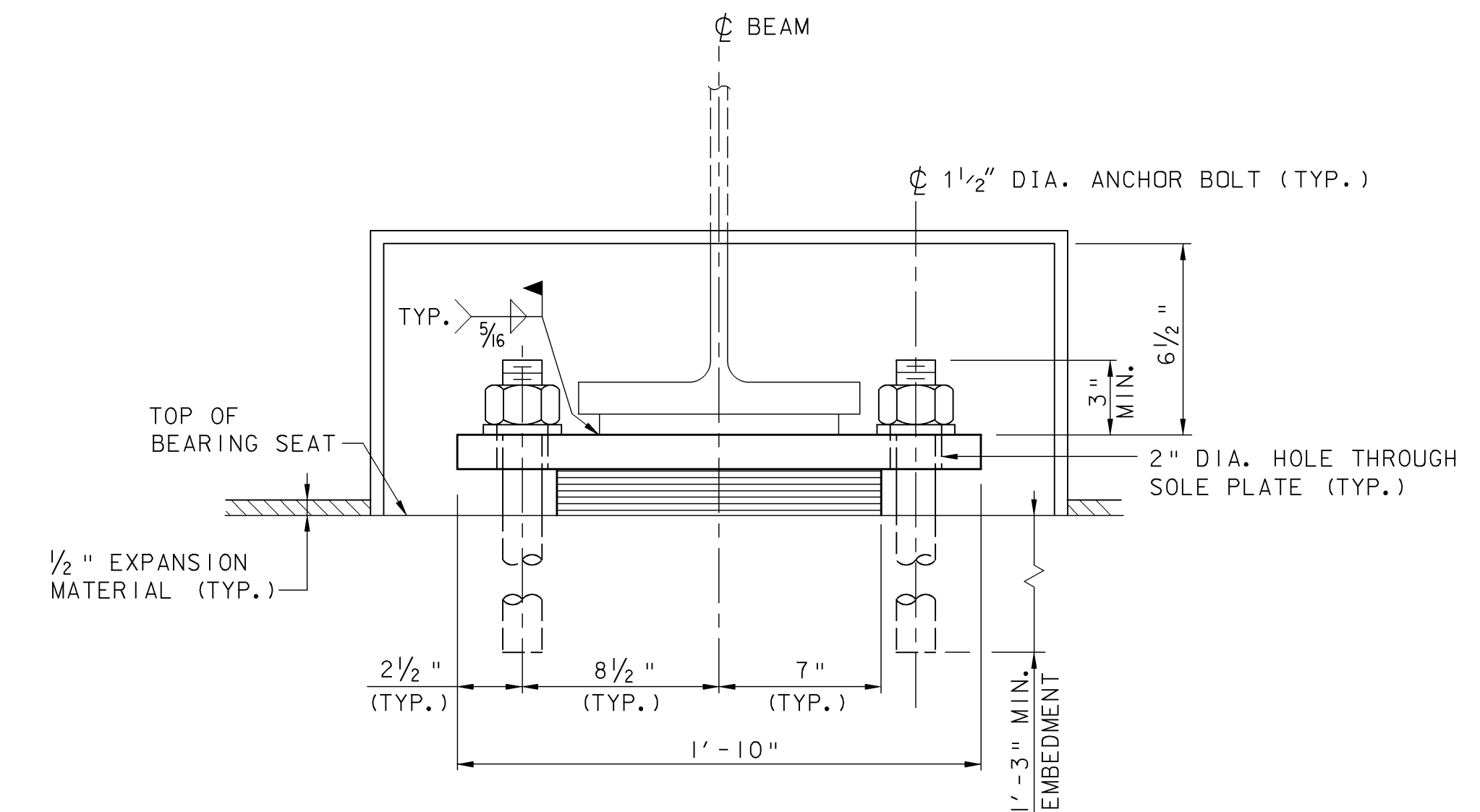


PLAN



ELEVATION



SECTION A-A

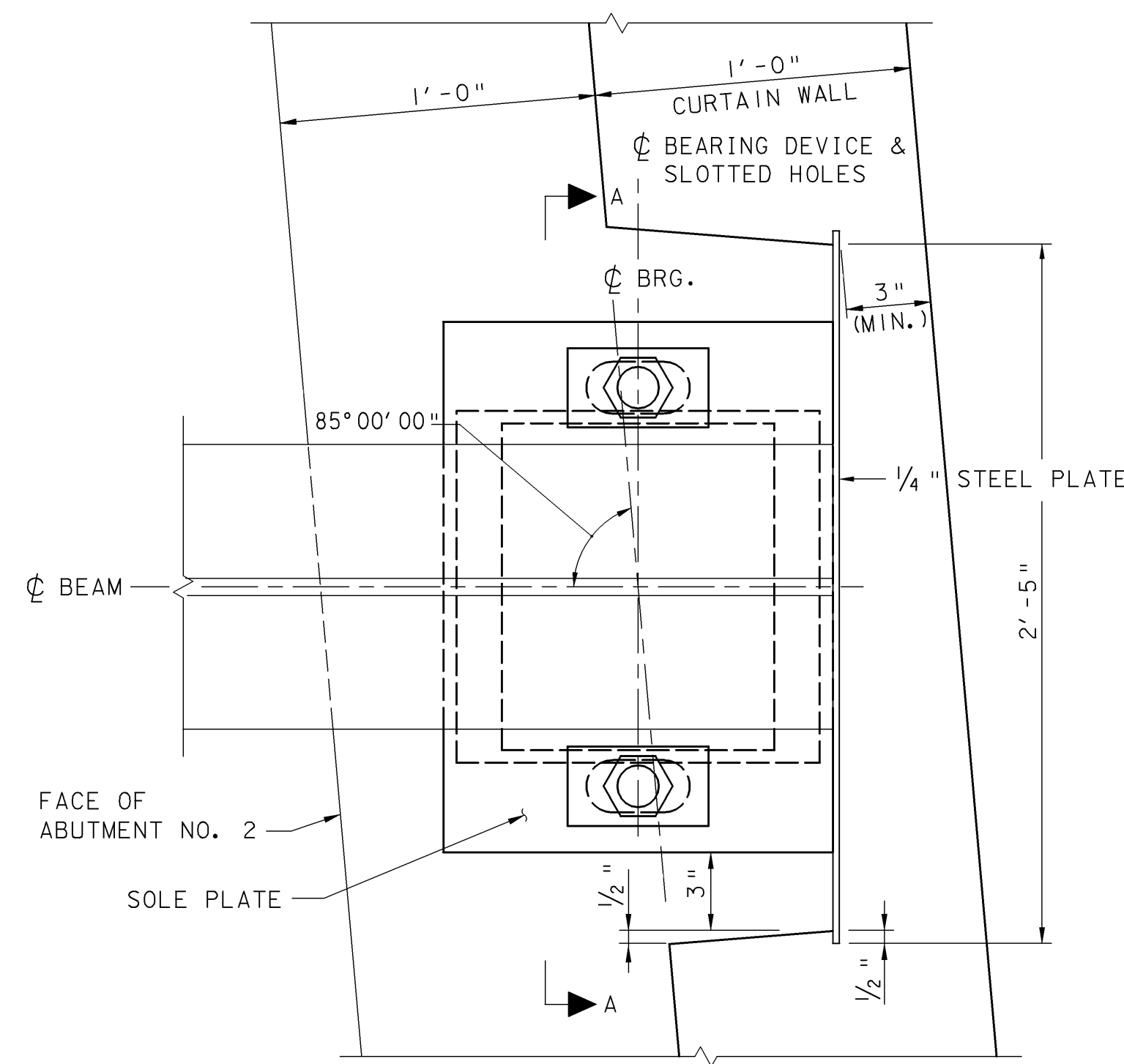
FIXED BEARING (ABUTMENT NO. 1)

NOT TO SCALE

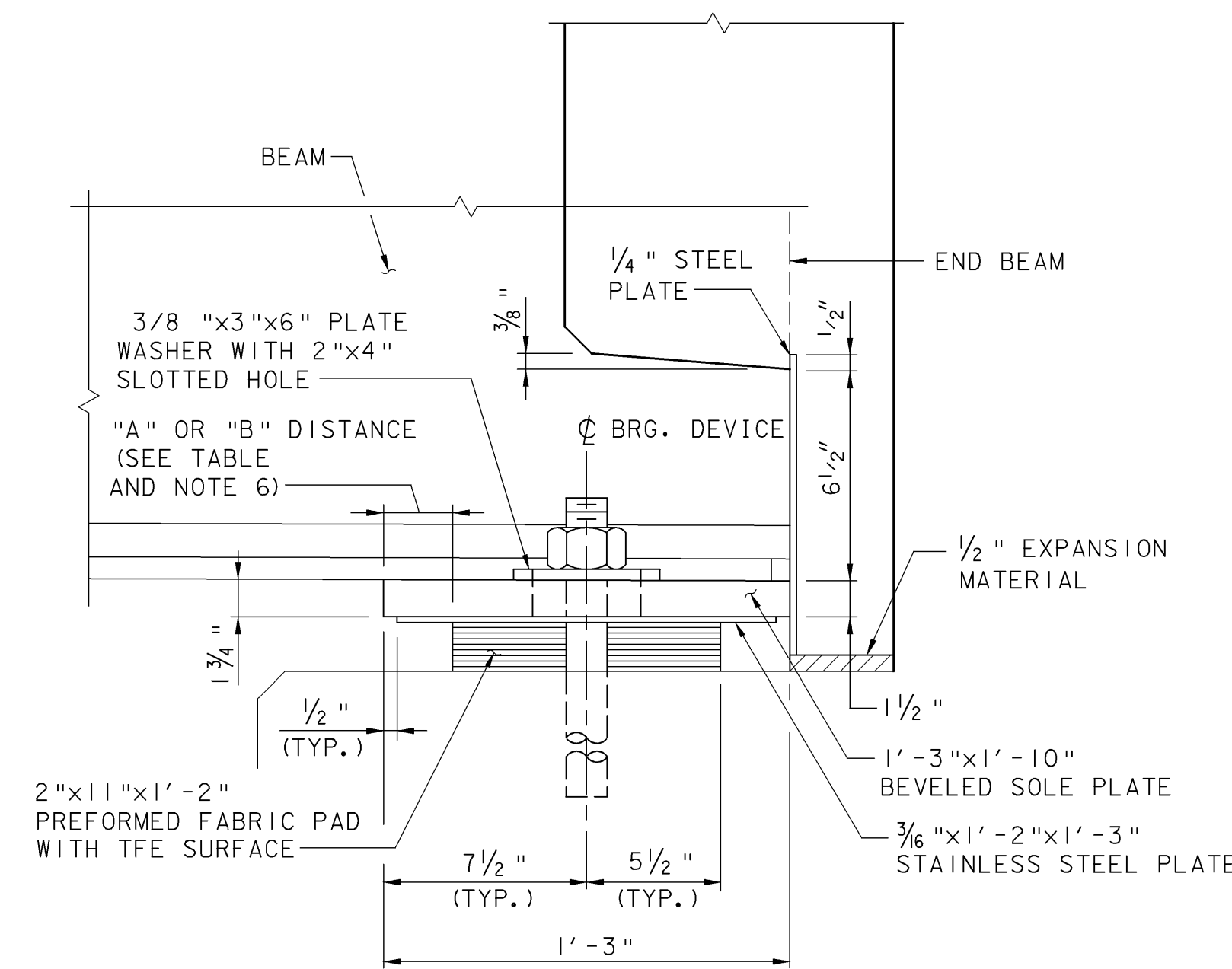
TEMPERATURE ADJUSTMENT TABLE		
TEMPERATURE	"A"	"B"
-30°F	3"	3 3/8"
-15°F	3"	3 5/8"
0°F	2 7/8"	3 1/2"
15°F	2 3/4"	3 3/8"
30°F	2 5/8"	3 1/4"
45°F	2 1/2"	3 1/8"
60°F	2 3/8"	3"
75°F	2 1/4"	2 7/8"
90°F	2 1/8"	2 3/4"
105°F	2"	2 5/8"
120°F	2"	2 3/8"

BEARING NOTES:

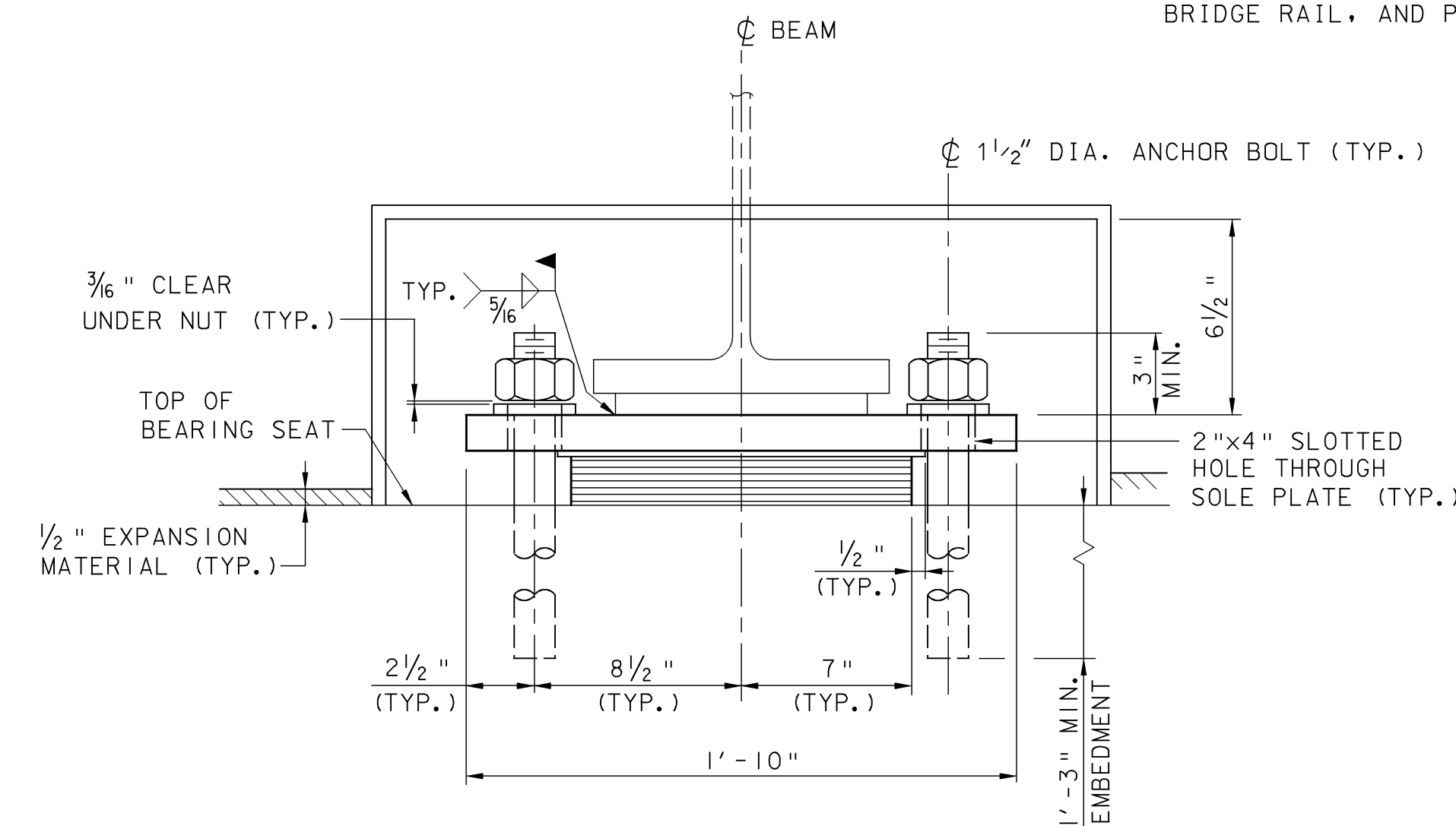
1. PREFORMED FABRIC PAD DESIGN CRITERIA:
 MAXIMUM ALLOWABLE BEARING PRESSURE ON CONCRETE = 1000 PSI
 MINIMUM ALLOWABLE DESIGN ROTATION = 0.015 RADIAN.
 HORIZONTAL CAPACITY SHALL BE A MINIMUM OF 6% VERTICAL LOAD
 DESIGN LOAD PER BEARING: 150 KIPS
2. BEARINGS SHALL BE PAID AS ITEM 531.10, BEARING DEVICE ASSEMBLY.
3. ALL STEEL IN BEARING DEVICES (EXCEPT STAINLESS) SHALL BE AASHTO M 270, GRADE 36.
4. ANCHOR BOLTS SHALL BE DRILLED AND SET WITH A MINIMUM OF 1'-3" EMBEDMENT INTO CONCRETE. HOLES SHALL BE 2 3/4" IN DIAMETER AND BOLTS SHALL BE SET IN TYPE IV MORTAR. ALL COSTS TO BE INCLUDED UNDER ITEM 531.10, BEARING DEVICE ASSEMBLY.
5. ANCHOR BOLTS SHALL BE SWEDGED WITH 5" OF THREAD. EXPANSION BEARING NUTS ARE TO BE DRAWN UP FINGER TIGHT AND THEN BACKED OFF 1/8". THREADS SHALL BE BURRED ABOVE NUT TO PREVENT NUT REMOVAL.
6. THE "A" DISTANCE IS THE SOLE PLATE ADJUSTMENT TO BE USED AFTER THE DEAD LOAD HAS BEEN APPLIED. THE "B" DISTANCE IS THE SOLE PLATE ADJUSTMENT TO BE USED BEFORE DEAD LOAD IS ADDED TO THE BEAM SELFWEIGHT. THE DIFFERENCE IS THE ELONGATION DUE TO DEAD LOAD DEFLECTION OF THE SLAB, BRUSH CURB, BRIDGE RAIL, AND PAVEMENT.



PLAN



ELEVATION



SECTION A-A

EXPANSION BEARING (ABUTMENT NO. 2)

NOT TO SCALE

THIS SHEET SUPERSEDES CONTRACT PLAN SHEET 32 DATED 6/05. REVISIONS ON THIS SHEET REFLECT CHANGES IN DESIGN AND DETAILS AS PER CHANGE ORDER NO. 2, SUBSTITUTING NEW STEEL BEAMS FOR RECYCLED BEAMS.

**TOWN OF GRAFTON
CAMBRIDGEPORT BRIDGE**

Town Of	GRAFTON	Bridge No.	16G
Highway No.	TH 1	Log Sta.	
TH 1 (CAMBRIDGEPORT BRIDGE) OVER THE SAXTONS RIVER			
BEARING DETAILS			
Designed By	L. S. GARDNER	Drawn By	B. J. MASSE
Checked By	J. T. KLEIN	Date	12/05
		Bridge Design Supervisor	M. A. COLGAN
PROJECT	GRAFTON	PROJECT NO.	TH2-0104
I.G.C. Info.	File No. 51335BRG	Sheet	32R of 42

VHB Vanasse Hangen Brustlin, Inc.