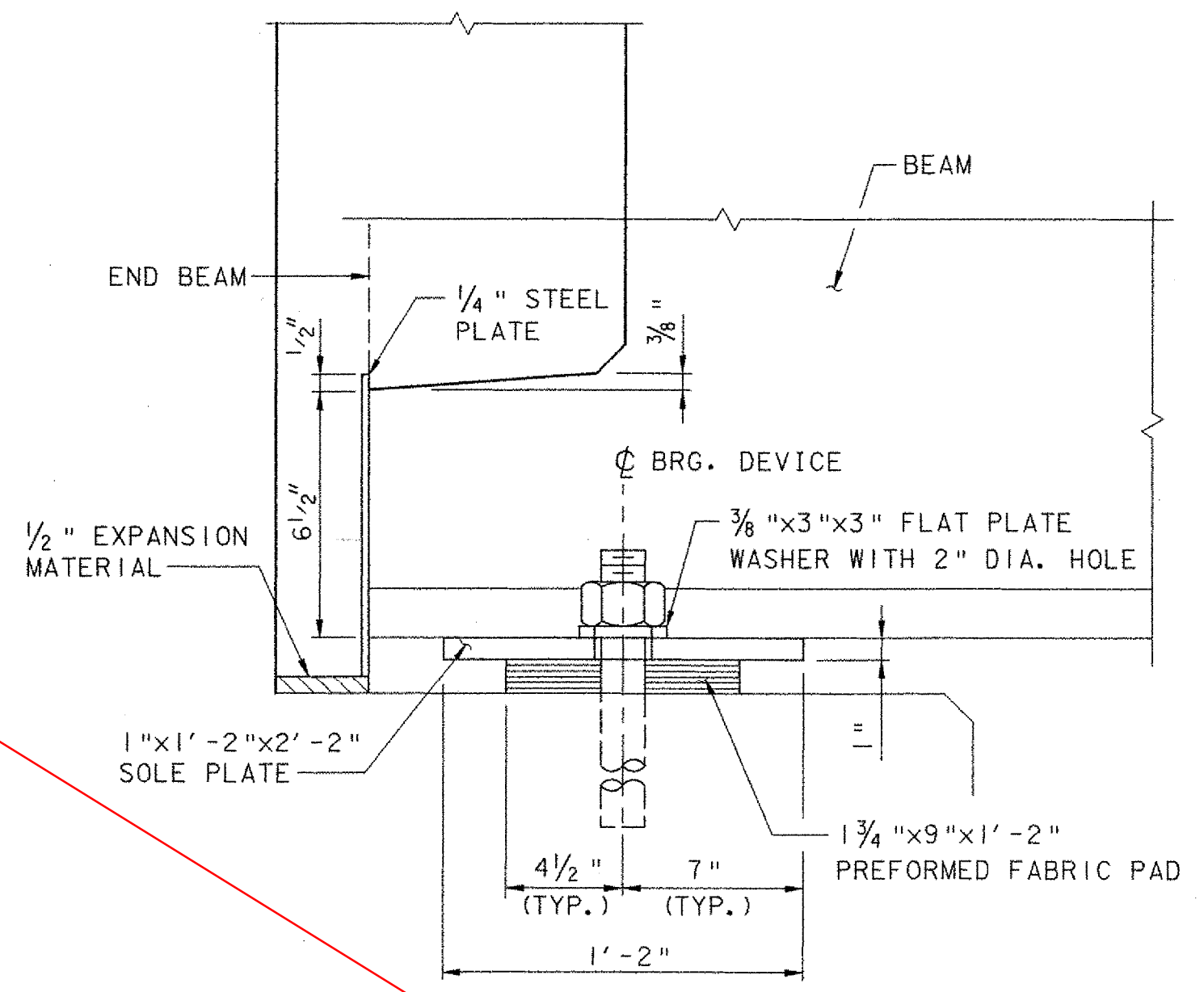
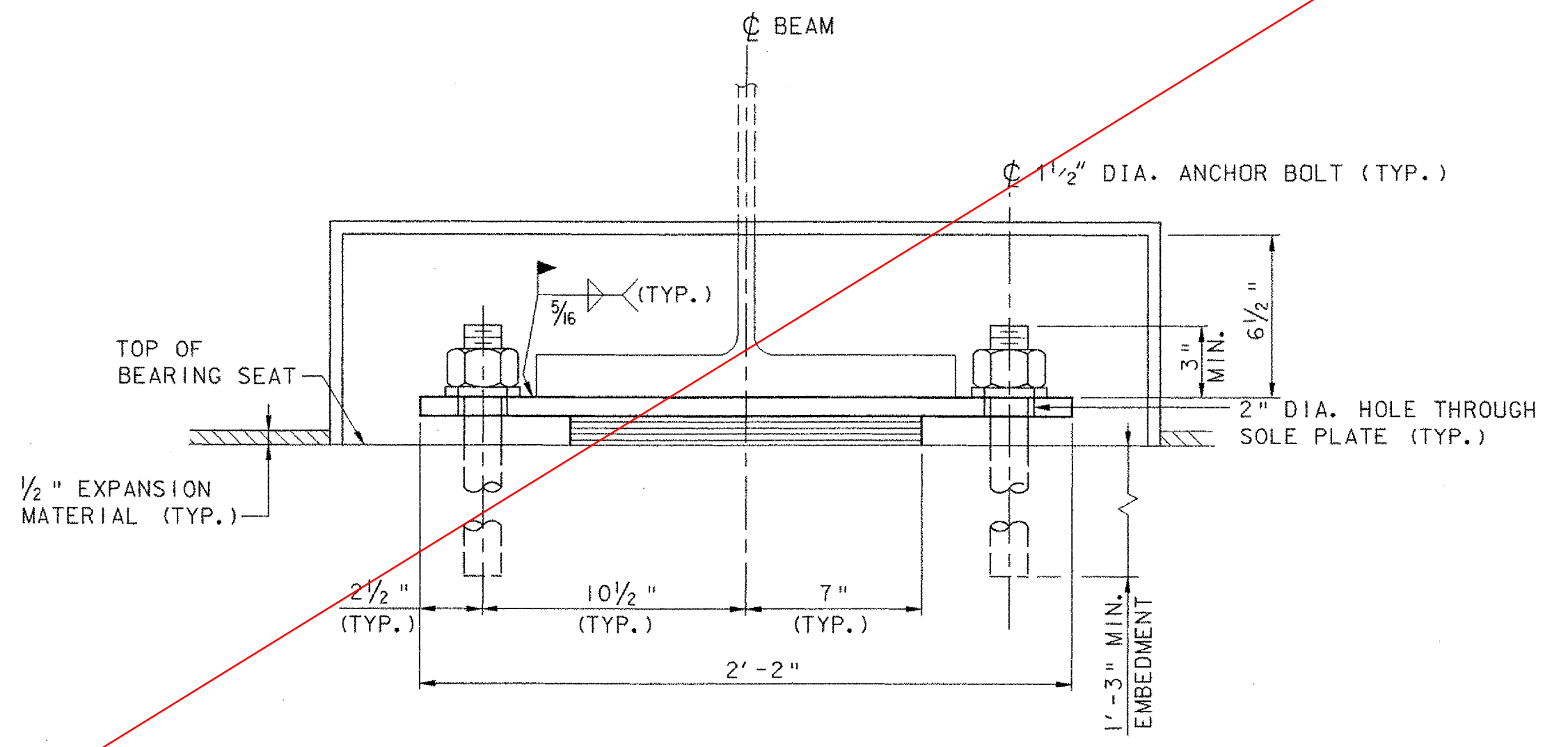


PLAN



ELEVATION



SECTION A-A

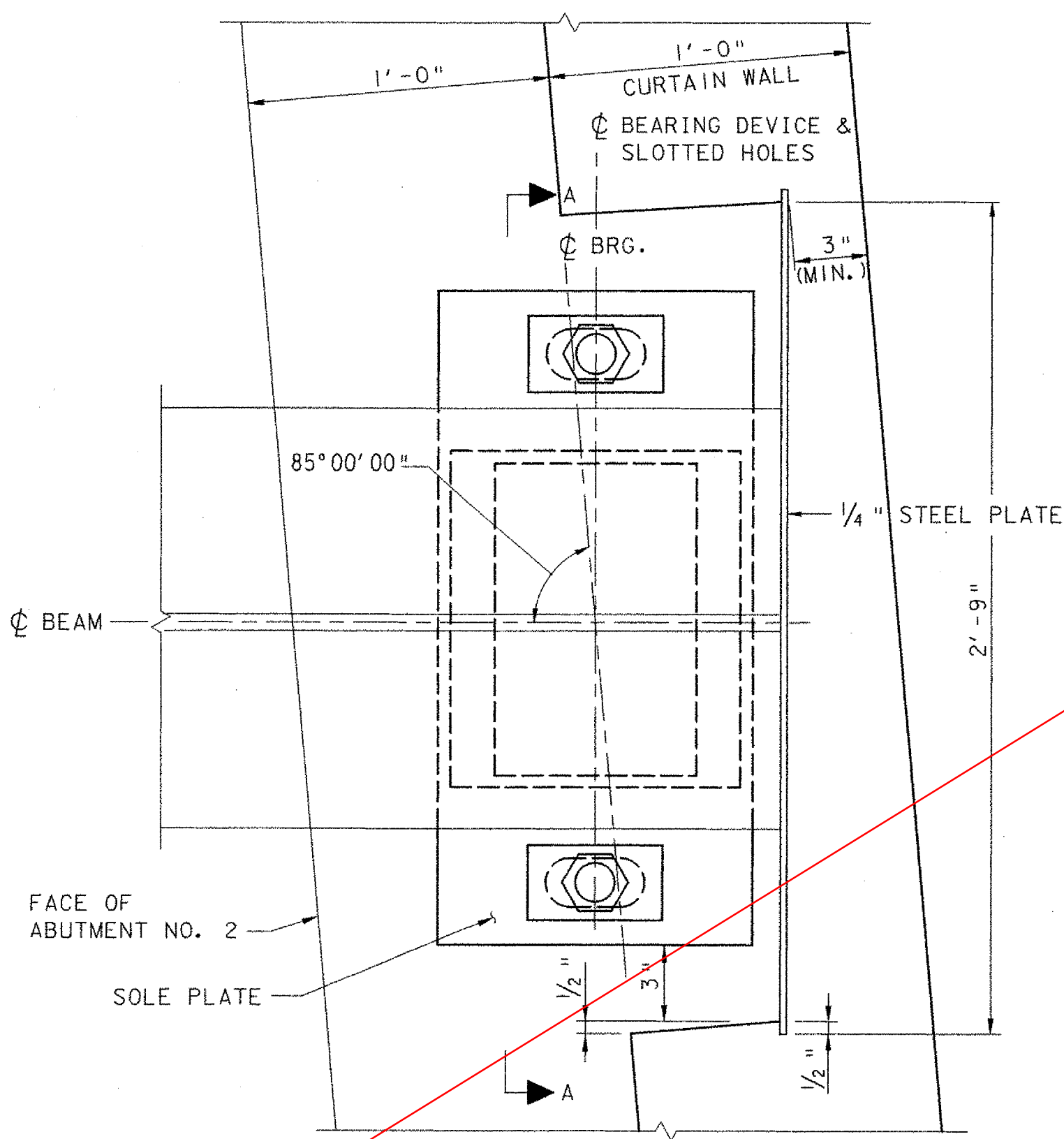
**FIXED BEARING (ABUTMENT NO. 1)**

NOT TO SCALE

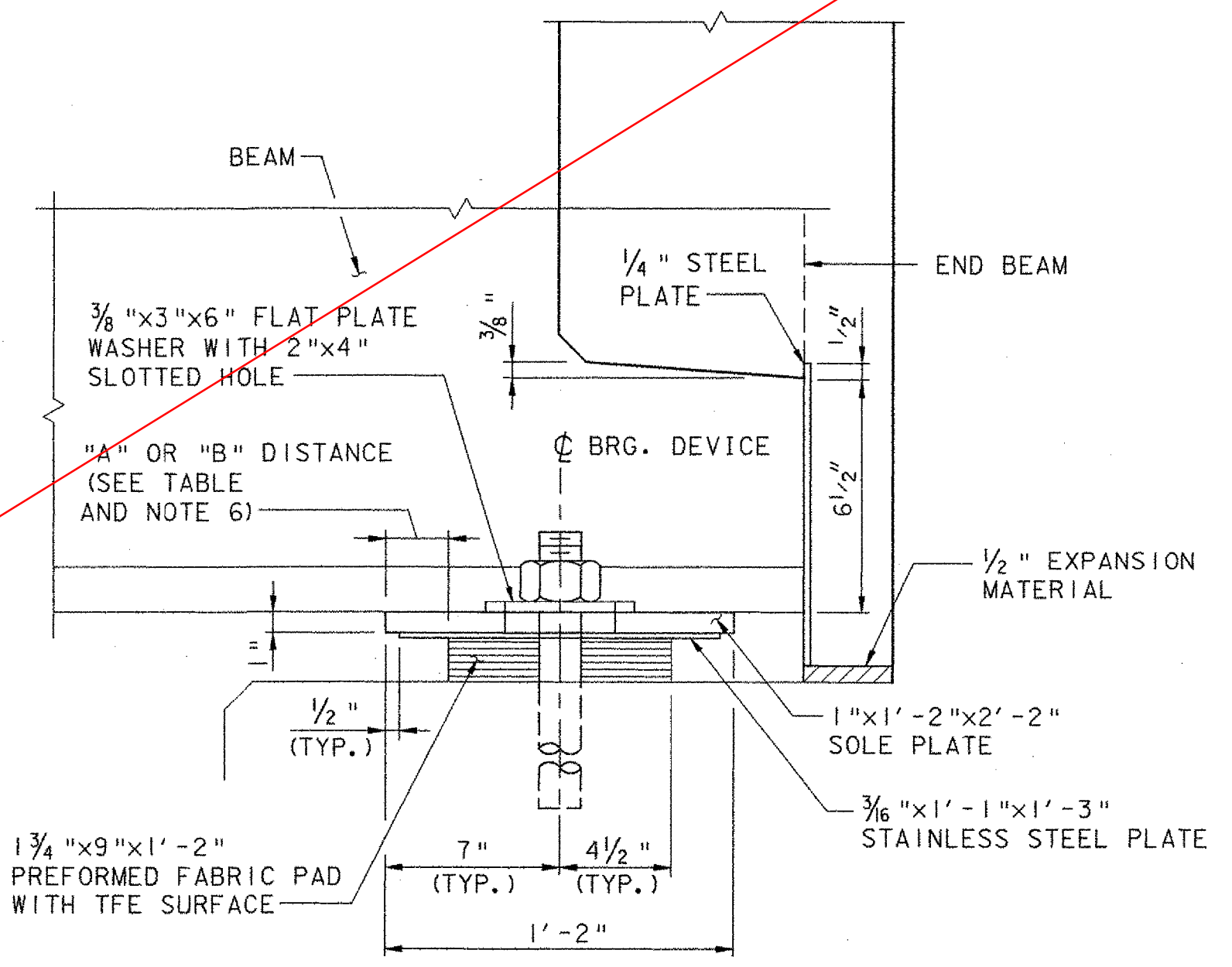
TEMPERATURE ADJUSTMENT TABLE		
TEMPERATURE	"A"	"B"
-30°F	3"	3 1/4"
-15°F	3"	3 1/4"
0°F	2 7/8"	3 1/8"
15°F	2 3/4"	3"
30°F	2 3/8"	2 7/8"
45°F	2 1/2"	2 3/4"
60°F	2 3/8"	2 5/8"
75°F	2 1/4"	2 1/2"
90°F	2 1/8"	2 3/8"
105°F	2"	2 1/4"
120°F	2"	2 1/4"

**BEARING NOTES:**

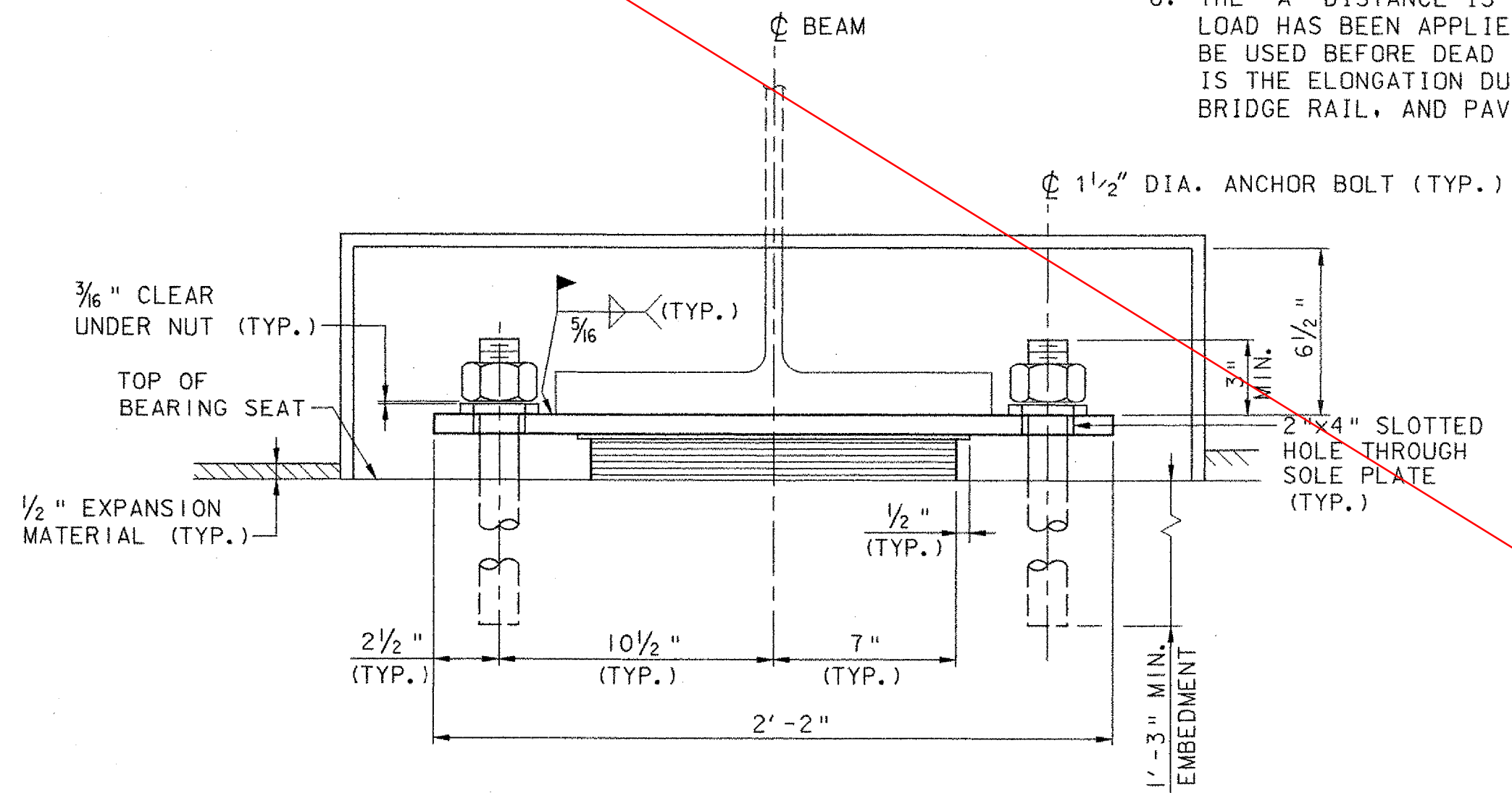
1. PREFORMED FABRIC PAD DESIGN CRITERIA:  
 MAXIMUM ALLOWABLE BEARING PRESSURE ON CONCRETE = 1000 PSI  
 MINIMUM ALLOWABLE DESIGN ROTATION = 0.015 RADIAN.  
 HORIZONTAL CAPACITY SHALL BE A MINIMUM OF 6% VERTICAL LOAD  
 DESIGN LOAD PER BEARING: ABUTMENTS: 120 KIPS
2. BEARINGS SHALL BE PAID AS ITEM 531.10, BEARING DEVICE ASSEMBLY.
3. ALL STEEL IN BEARING DEVICES (EXCEPT STAINLESS) SHALL BE AASHTO M 270, GRADE 36.
4. ANCHOR BOLTS SHALL BE DRILLED AND SET WITH A MINIMUM OF 1'-3" EMBEDMENT INTO CONCRETE. HOLES SHALL BE 2 3/4" IN DIAMETER AND BOLTS SHALL BE SET IN TYPE IV MORTAR. ALL COSTS TO BE INCLUDED UNDER ITEM 531.10, BEARING DEVICE ASSEMBLY.
5. ANCHOR BOLTS SHALL BE SWEDGED WITH 5" OF THREAD. EXPANSION BEARING NUTS ARE TO BE DRAWN UP FINGER TIGHT AND THEN BACKED OFF 1/8". THREADS SHALL BE BURRED ABOVE NUT TO PREVENT NUT REMOVAL.
6. THE "A" DISTANCE IS THE SOLE PLATE ADJUSTMENT TO BE USED AFTER THE DEAD LOAD HAS BEEN APPLIED. THE "B" DISTANCE IS THE SOLE PLATE ADJUSTMENT TO BE USED BEFORE DEAD LOAD IS ADDED TO THE BEAM SELFWEIGHT. THE DIFFERENCE IS THE ELONGATION DUE TO DEAD LOAD DEFLECTION OF THE SLAB, BRUSH CURB, BRIDGE RAIL, AND PAVEMENT.



PLAN



ELEVATION



SECTION A-A

**EXPANSION BEARING (ABUTMENT NO. 2)**

NOT TO SCALE

SEE SHEET 32R

TOWN OF GRAFTON CAMBRIDGEPORT BRIDGE		
Town Of	GRAFTON	Bridge No. 16G
Highway No.	TH 1	Log Sta.
		Surv. Sta.
TH 1 (CAMBRIDGEPORT BRIDGE) OVER THE SAXTONS RIVER		
BEARING DETAILS		
Designed By	J. T. KLEIN	Drawn By B. J. MASSE
Checked By	Date	Bridge Design Supervisor
K. G. KRETSCH	5/05	M. A. COLGAN Date 5/05
PROJECT	GRAFTON	PROJECT NO. TH2-0104
I.G.C. Info.		
File No. 51335BRG		Sheet 32 of 42

**VHB Vanasse Hangen Brustlin, Inc.**