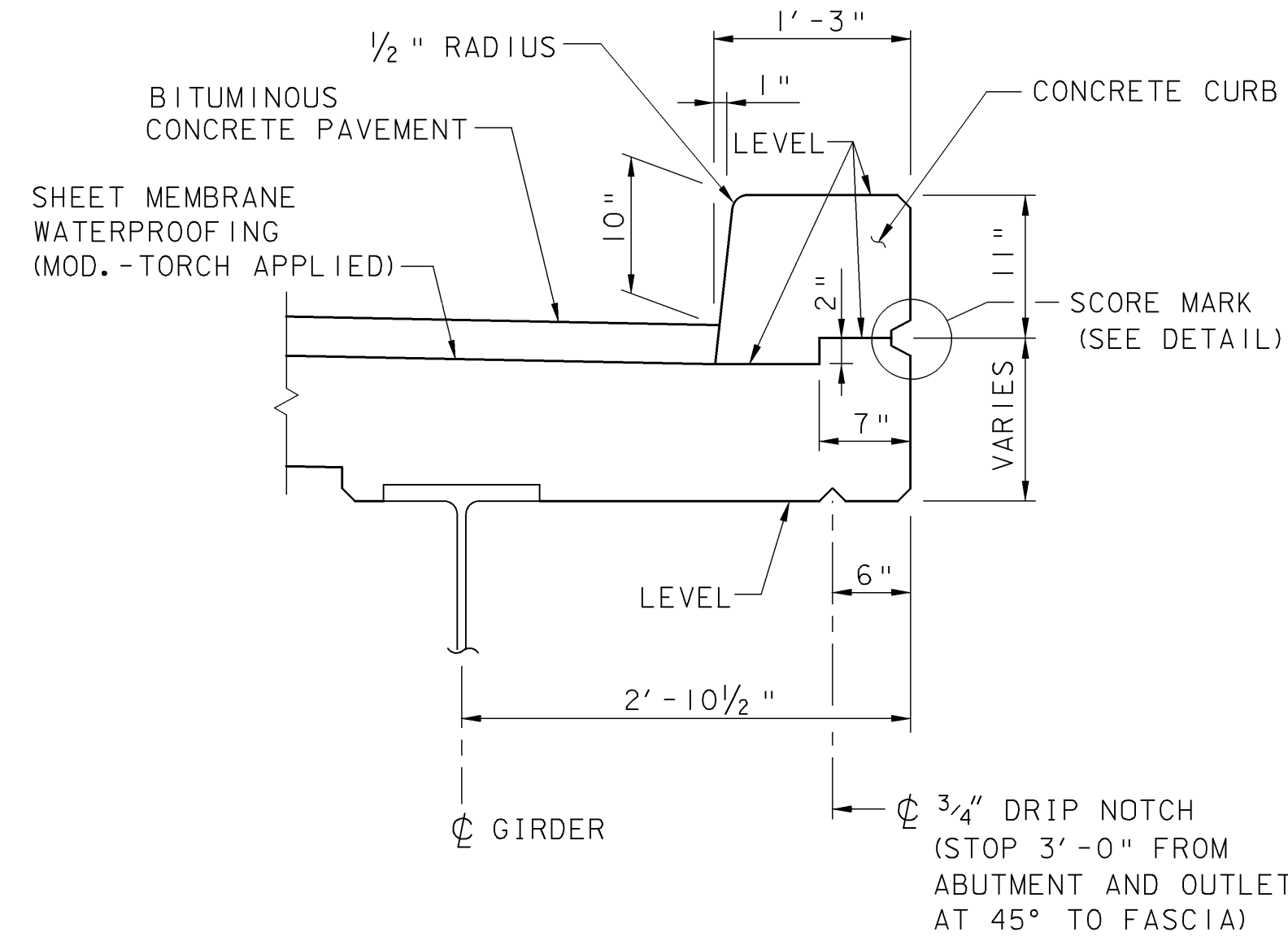


SECTION A-A

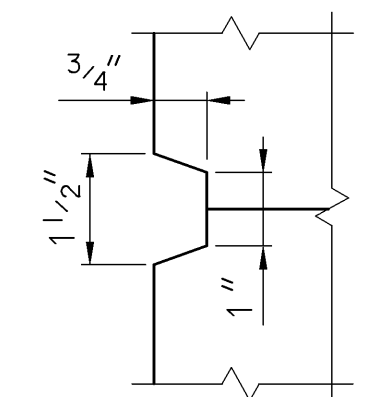
CURB CONSTRUCTION JOINT NOTES:

1. CONCRETE CURB CONSTRUCTION JOINTS SHALL BE SPACED A MAXIMUM OF 15'-0" CENTER TO CENTER AND SHALL BE 1'-6" MINIMUM FROM THE CENTER OF THE NEAREST BRIDGE RAIL POST. CONCRETE SHALL BE PLACED IN ALTERNATING SECTIONS WITH A MINIMUM OF 48 HOURS BETWEEN ADJACENT POURS.
2. LONGITUDINAL REINFORCING SHALL PASS THROUGH CONCRETE CURB CONSTRUCTION JOINTS UNLESS OTHERWISE SHOWN.
3. POLYURETHANE JOINT SEALER, PER SUBSECTION 524.06 (c), SHALL MATCH THE CONCRETE COLOR. COST TO BE INCLUDED IN THE UNIT PRICE BID FOR CONCRETE



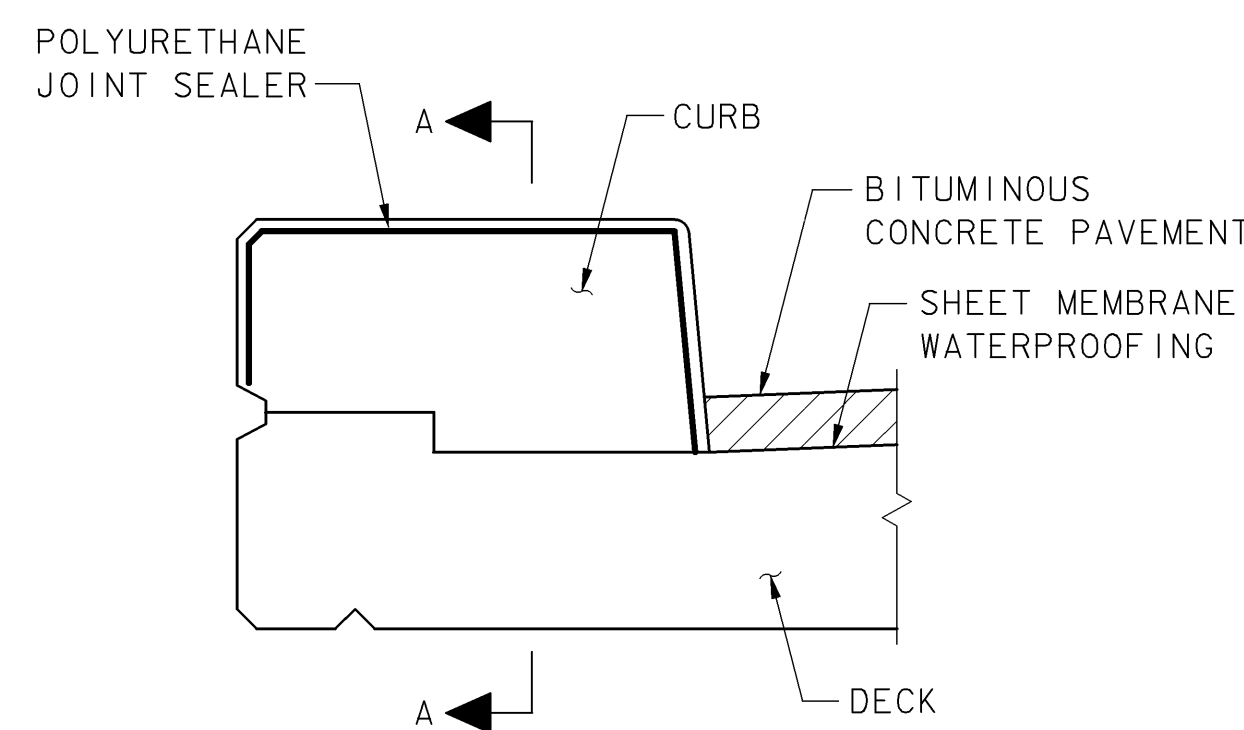
TYPICAL CURB DETAIL

(BRIDGE RAIL NOT SHOWN)
SCALE: 1" = 1'-0"

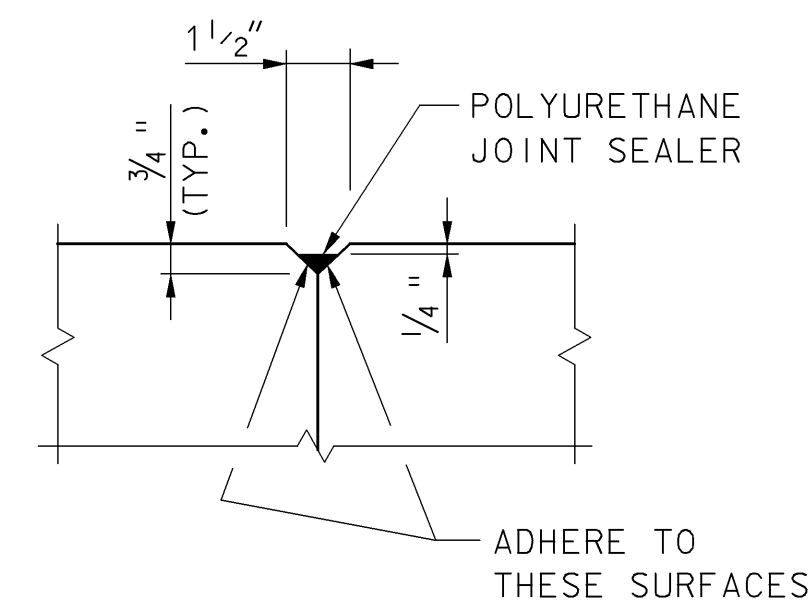


SCORE MARK DETAIL

NOT TO SCALE



TYPICAL SECTION

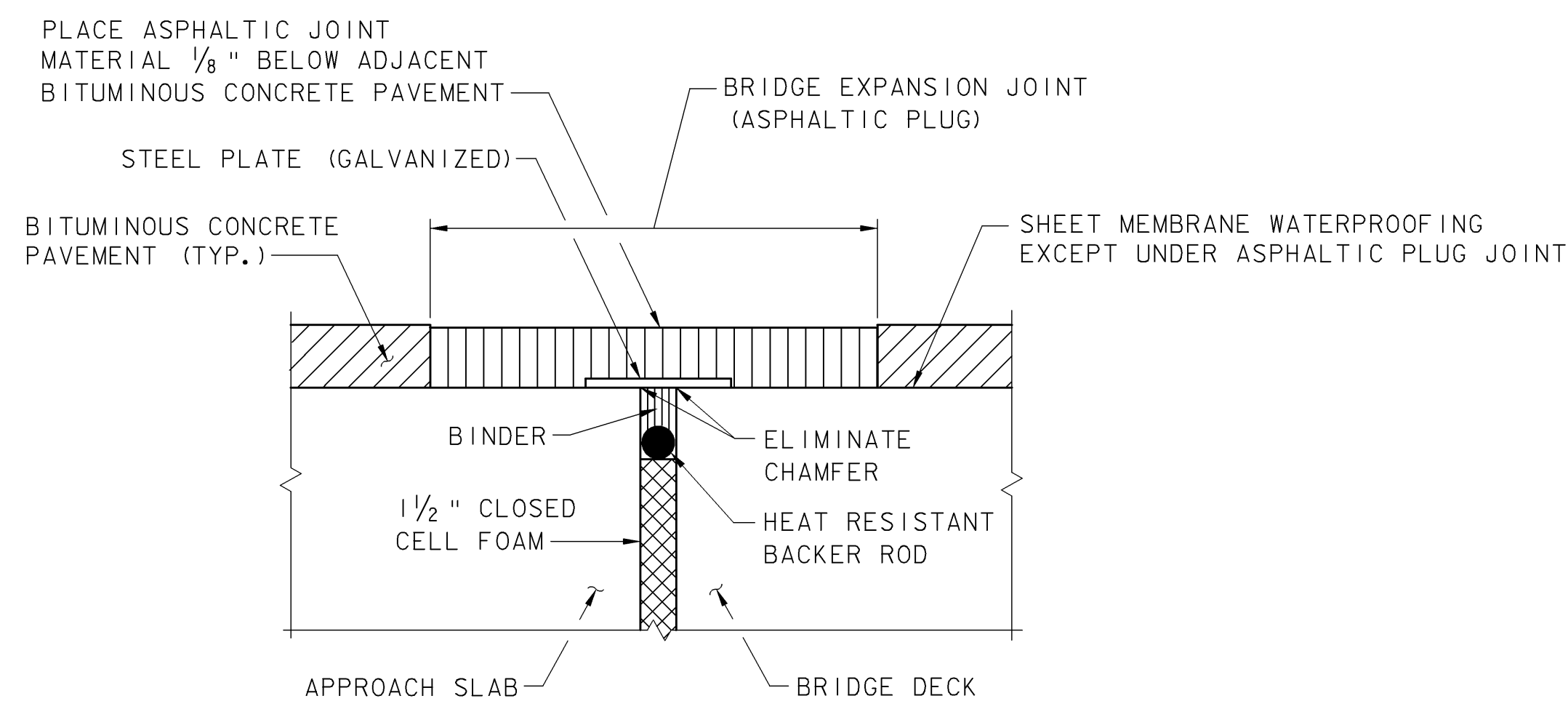


DETAIL B

CONCRETE CURB CONSTRUCTION JOINT

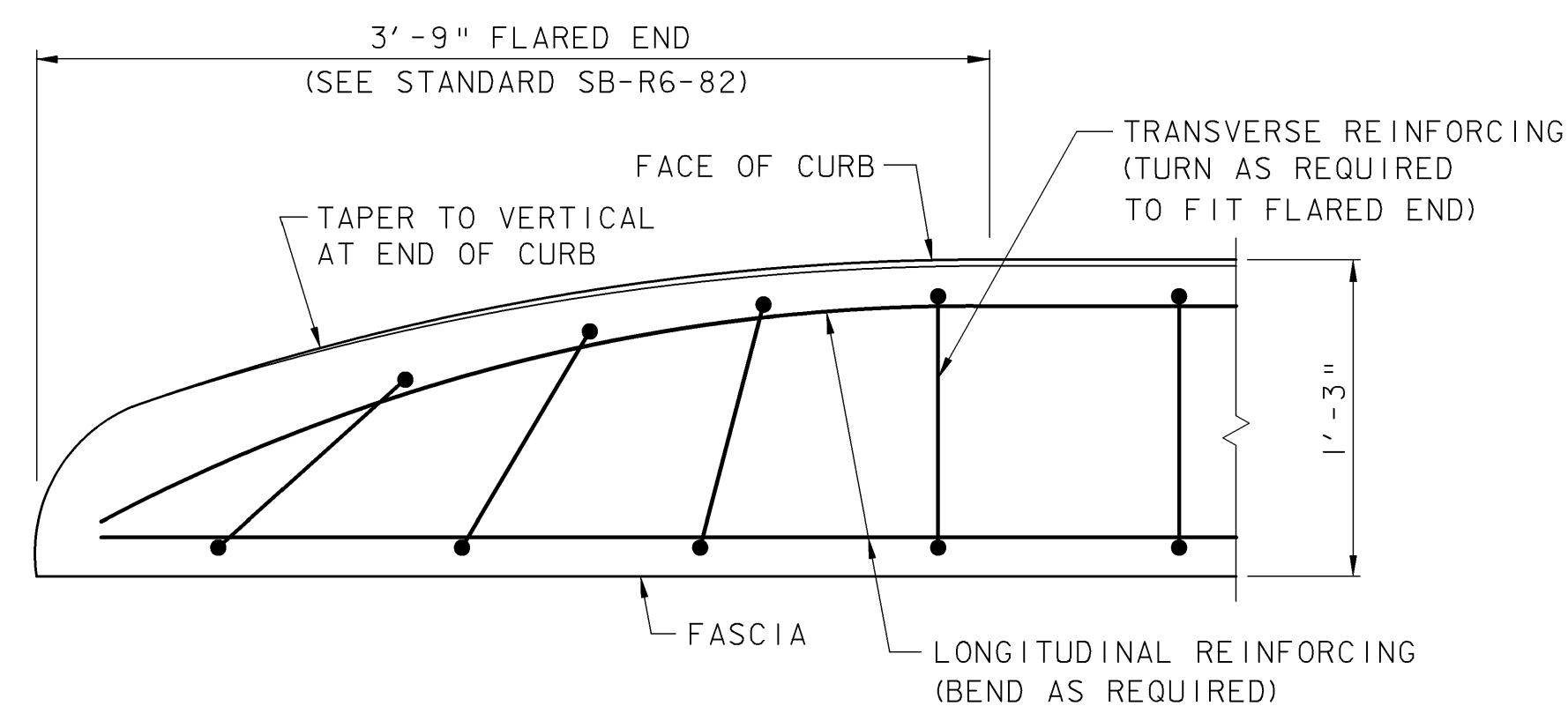
NOT TO SCALE

THIS SHEET SUPERSEDES CONTRACT PLAN SHEET 27 DATED 6/05. REVISIONS ON THIS SHEET REFLECT CHANGES IN DESIGN AND DETAILS AS PER CHANGE ORDER NO. 2, SUBSTITUTING NEW STEEL BEAMS FOR RECYCLED BEAMS.



ASPHALTIC PLUG TYPE JOINT DETAIL

(TO BE USED AT EACH END OF BRIDGE)
NOT TO SCALE



TYPICAL CURB FLARED END DETAIL

NOT TO SCALE

DECK POUR NOTES:

1. CONCRETE DECK POUR SHALL BE PLACED CONTINUOUSLY WITHIN ONE EIGHT HOUR WORKING DAY.
2. THE DECK CONCRETE SHALL BE RETARDED SUFFICIENTLY TO REMAIN FLUID UNTIL POUR IS COMPLETE. THE QUALITY OF RETARDANT SHALL BE APPROVED BY THE ENGINEER PRIOR TO PLACEMENT. ANY DEVIATIONS FROM THIS PROCEDURE MUST BE APPROVED BY THE ENGINEER IN WRITING BEFORE THE POUR BEGINS.

**TOWN OF GRAFTON
CAMBRIDGEPORT BRIDGE**

Town Of	GRAFTON	Bridge No.	16G
Highway No.	TH 1	Log Sta.	
TH 1 (CAMBRIDGEPORT BRIDGE) OVER THE SAXTONS RIVER		Surv. Sta.	
DECK DETAILS			
Designed By	L. S. GARDNER	Drawn By	B. J. MASSE
Checked By	J. T. KLEIN	Date	12/05
		Bridge Design Supervisor	M. A. COLGAN Date 12/05
PROJECT	GRAFTON	PROJECT NO.	TH2-0104
I.G.C. Info.	File No. 51335DT2	Sheet	27R of 42