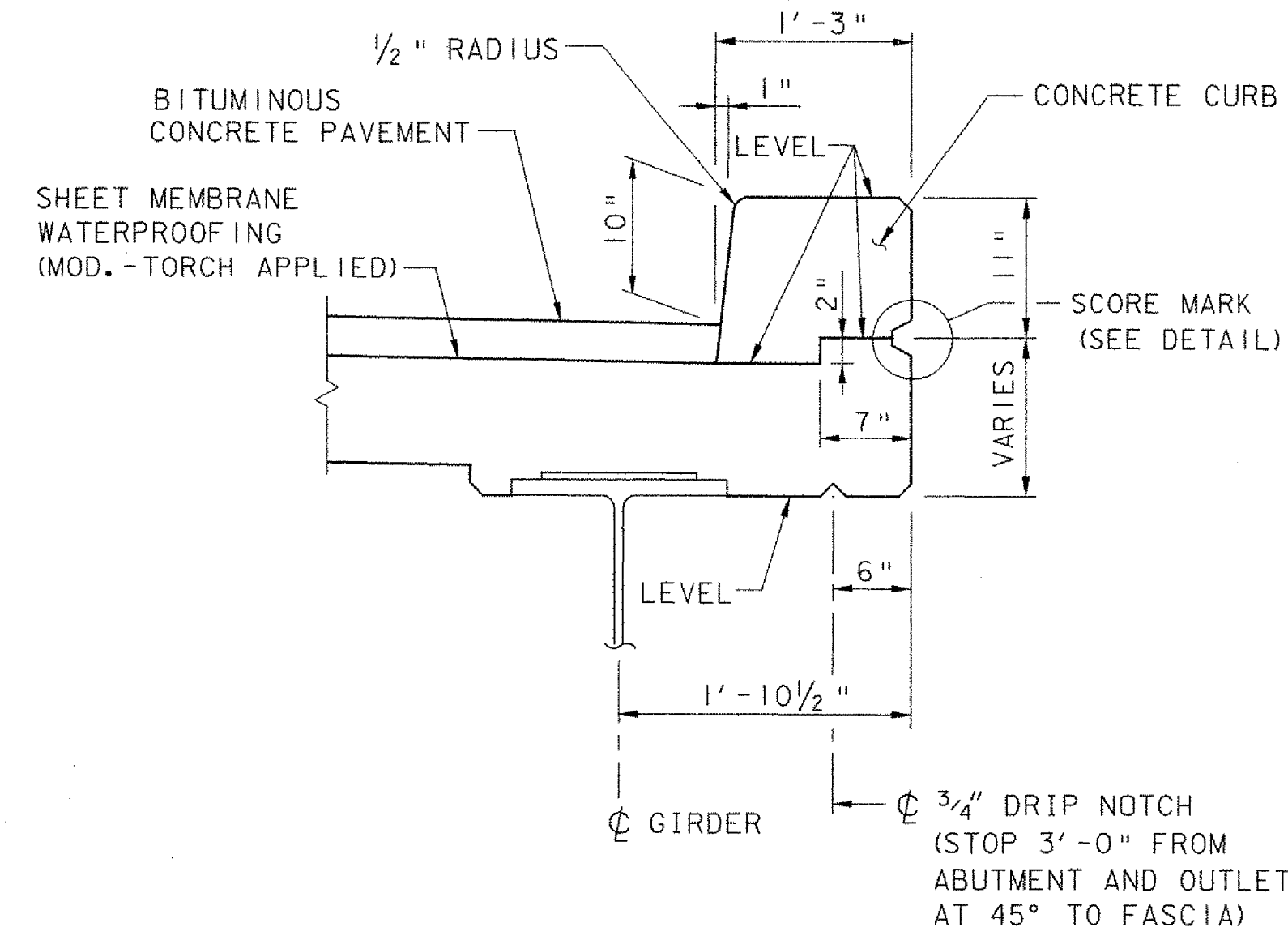
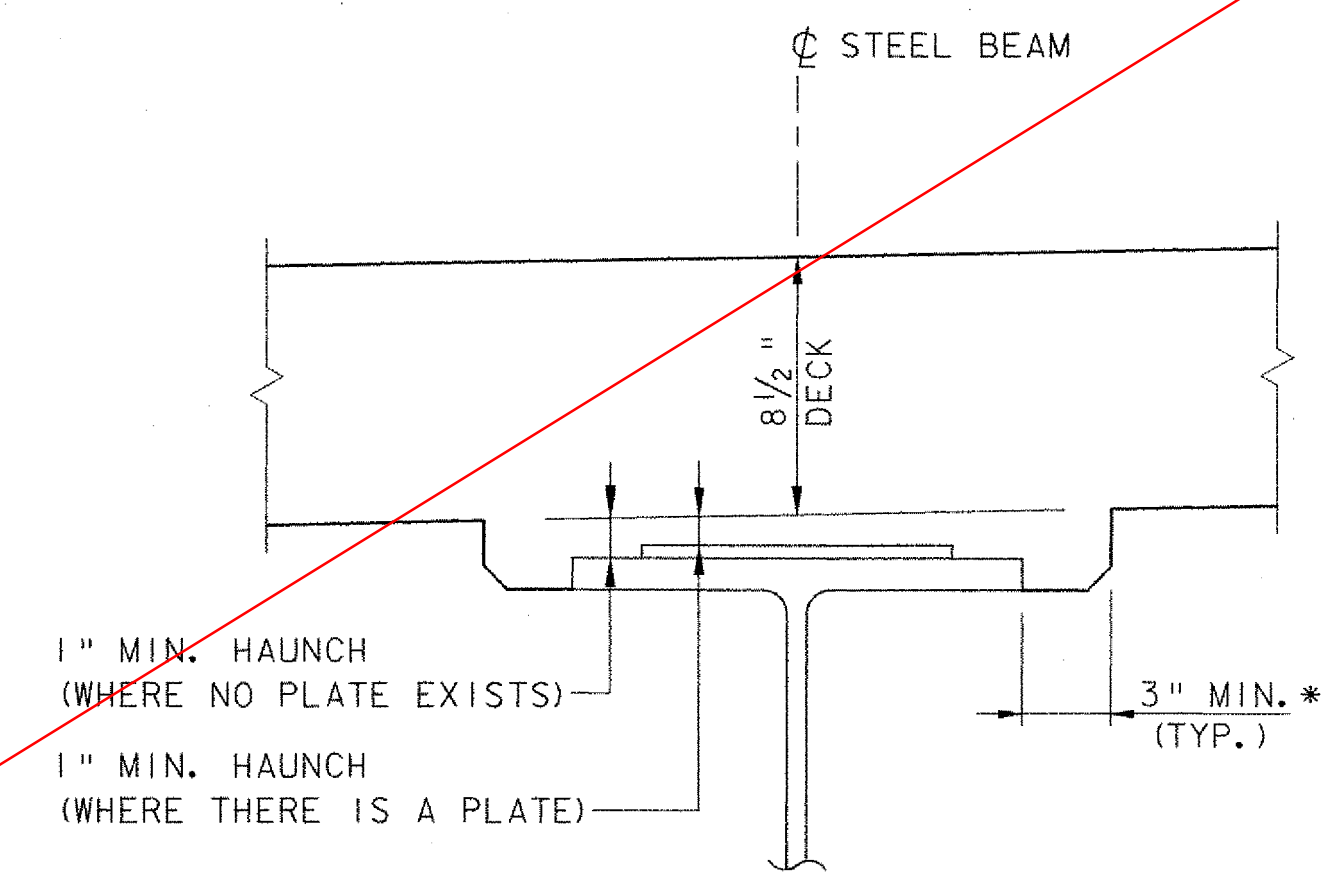


SECTION A-A

- CURB CONSTRUCTION JOINT NOTES:**
1. CONCRETE CURB CONSTRUCTION JOINTS SHALL BE SPACED A MAXIMUM OF 15'-0" CENTER TO CENTER AND SHALL BE 1'-6" MINIMUM FROM THE CENTER OF THE NEAREST BRIDGE RAIL POST. CONCRETE SHALL BE PLACED IN ALTERNATING SECTIONS WITH A MINIMUM OF 48 HOURS BETWEEN ADJACENT POURS.
 2. LONGITUDINAL REINFORCING SHALL PASS THROUGH CONCRETE CURB CONSTRUCTION JOINTS UNLESS OTHERWISE SHOWN.
 3. POLYURETHANE JOINT SEALER, PER SUBSECTION 524.06 (c), SHALL MATCH THE CONCRETE COLOR. COST TO BE INCLUDED IN THE UNIT PRICE BID FOR CONCRETE

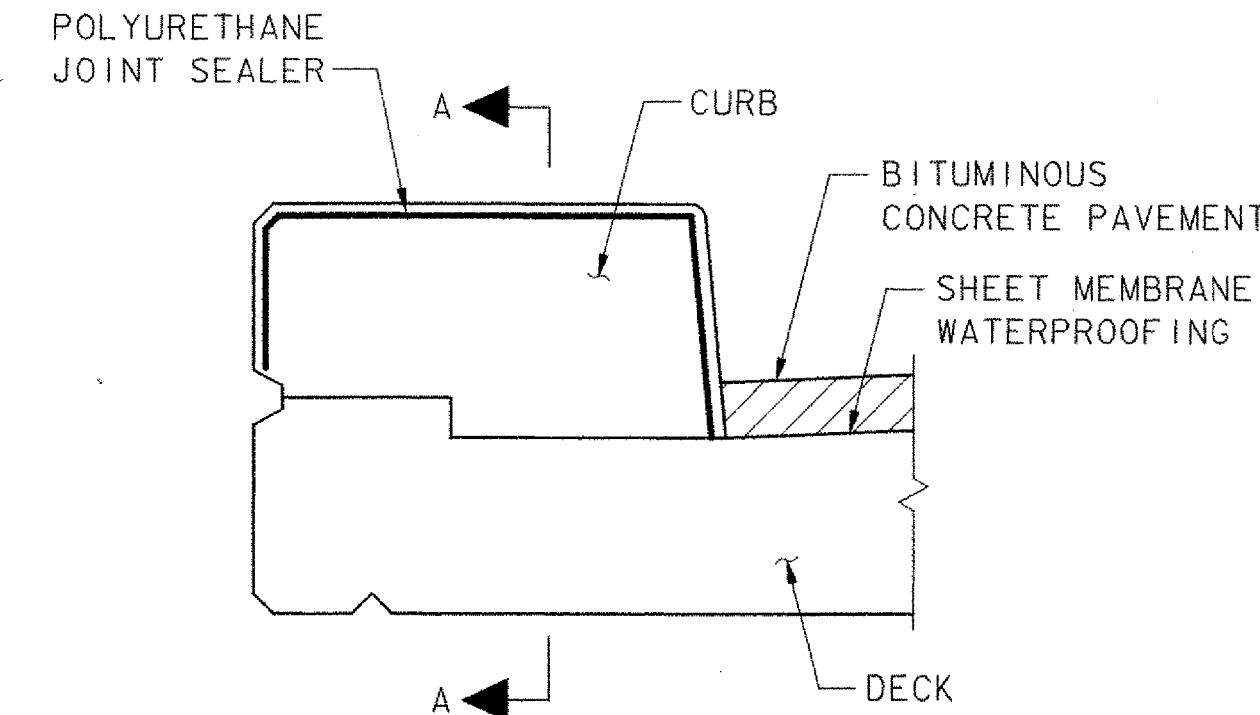


TYPICAL CURB DETAIL
(BRIDGE RAIL NOT SHOWN)
SCALE: 1" = 1'-0"

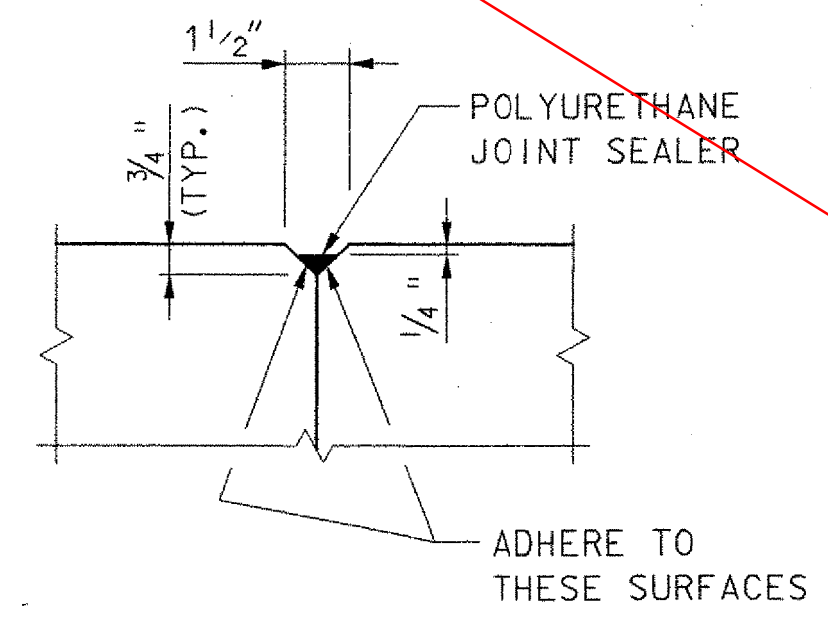


* THE 3" HORIZONTAL EXTENSION MAY BE ELIMINATED FOR FORMING SYSTEMS DESIGNED FOR VERTICAL HAUNCHES IF APPROVED BY THE STRUCTURES ENGINEER. ANY HOLES RESULTING FROM THIS FORMING SYSTEM SHALL BE FILLED WITH MORATR, TYPE IV. ALL COSTS SHALL BE INCIDENTAL TO CONCRETE PAY ITEM.

TYPICAL HAUNCH DETAIL
NOT TO SCALE

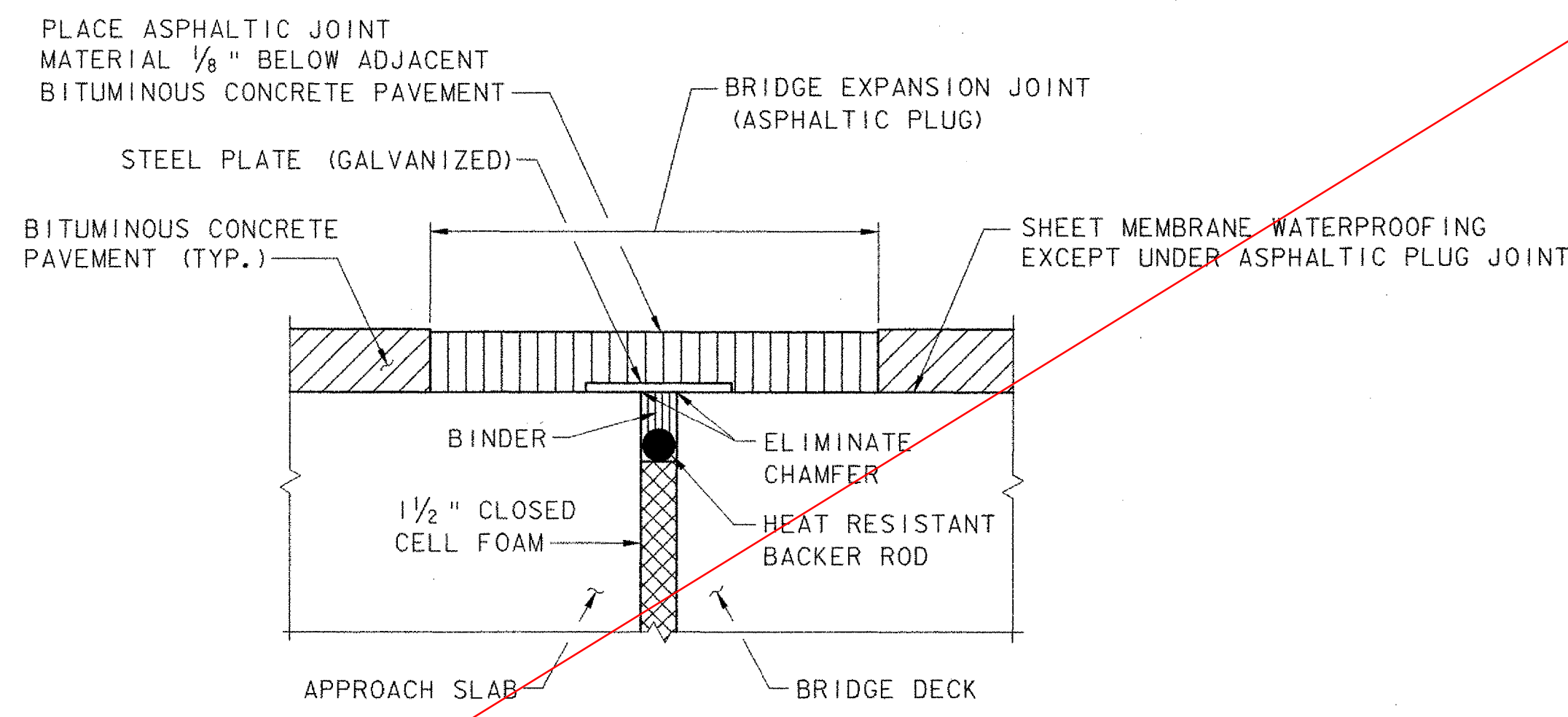


TYPICAL SECTION

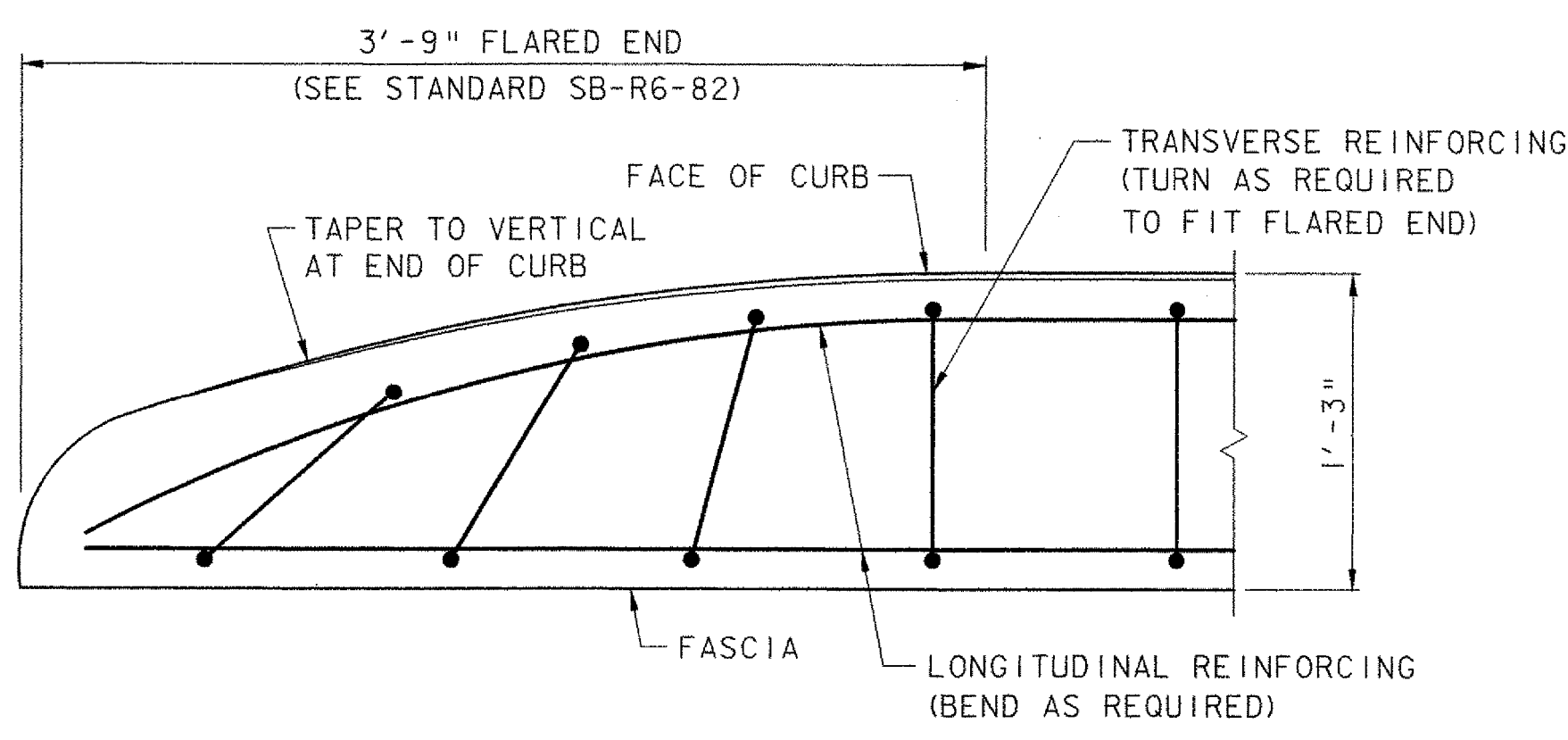


DETAIL B

CONCRETE CURB CONSTRUCTION JOINT
NOT TO SCALE

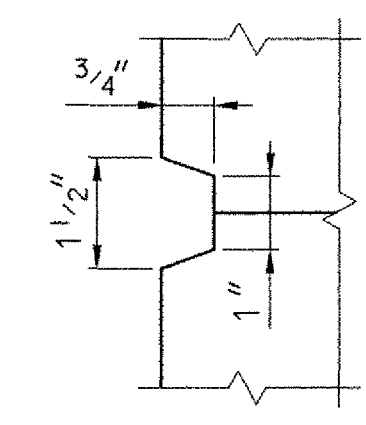


ASPHALTIC PLUG TYPE JOINT DETAIL
(TO BE USED AT EACH END OF BRIDGE)
NOT TO SCALE



TYPICAL CURB FLARED END DETAIL
NOT TO SCALE

SEE SHEET 27R



SCORE MARK DETAIL
NOT TO SCALE

- DECK POUR NOTES:**
1. CONCRETE DECK POUR SHALL BE PLACED CONTINUOUSLY WITHIN ONE EIGHT HOUR WORKING DAY.
 2. THE DECK CONCRETE SHALL BE RETARDED SUFFICIENTLY TO REMAIN FLUID UNTIL POUR IS COMPLETE. THE QUALITY OF RETARDANT SHALL BE APPROVED BY THE ENGINEER PRIOR TO PLACEMENT. ANY DEVIATIONS FROM THIS PROCEDURE MUST BE APPROVED BY THE ENGINEER IN WRITING BEFORE THE POUR BEGINS.

**TOWN OF GRAFTON
CAMBRIDGEPORT BRIDGE**

Town Of	GRAFTON	Bridge No.	16G
Highway No.	TH 1	Log Sta.	
		Surv. Sta.	
TH 1 (CAMBRIDGEPORT BRIDGE) OVER THE SAXTONS RIVER			
DECK DETAILS			
Designed By	J. T. KLEIN	Drawn By	B. J. MASSE
Checked By	Date	Bridge Design Supervisor	
K. R. CRAWFORD	5/05	M. A. COLGAN	Date 5/05
PROJECT	GRAFTON	PROJECT NO.	TH2-0104
L.G.C. Info.			
File No.	51335DT2	Sheet	27 of 42