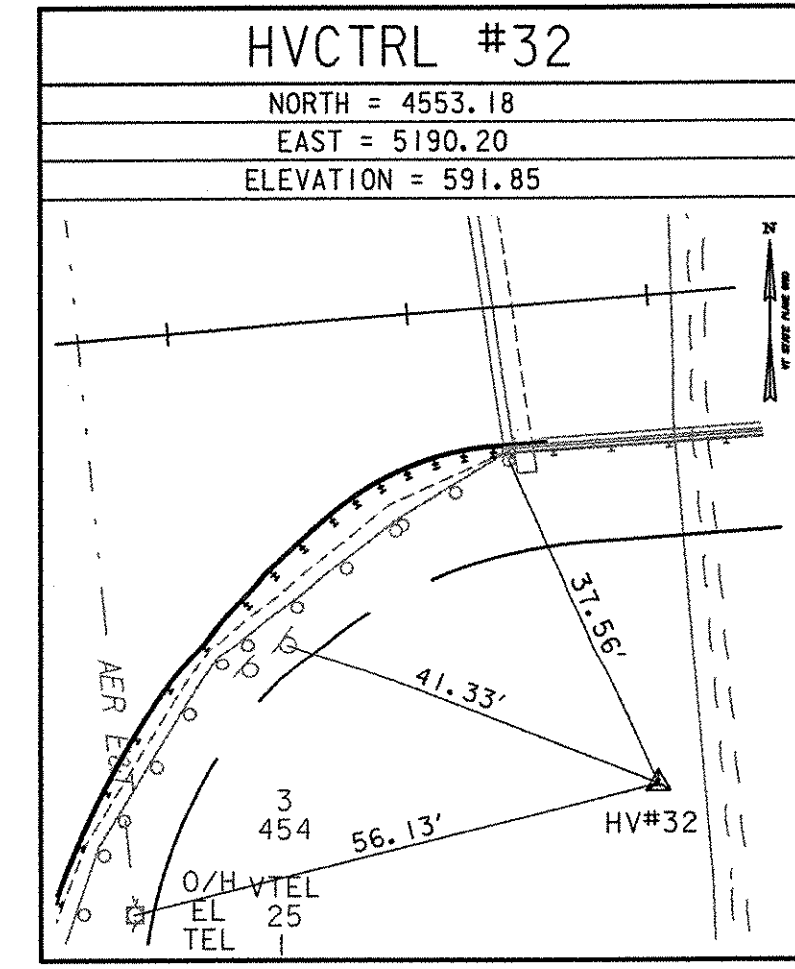
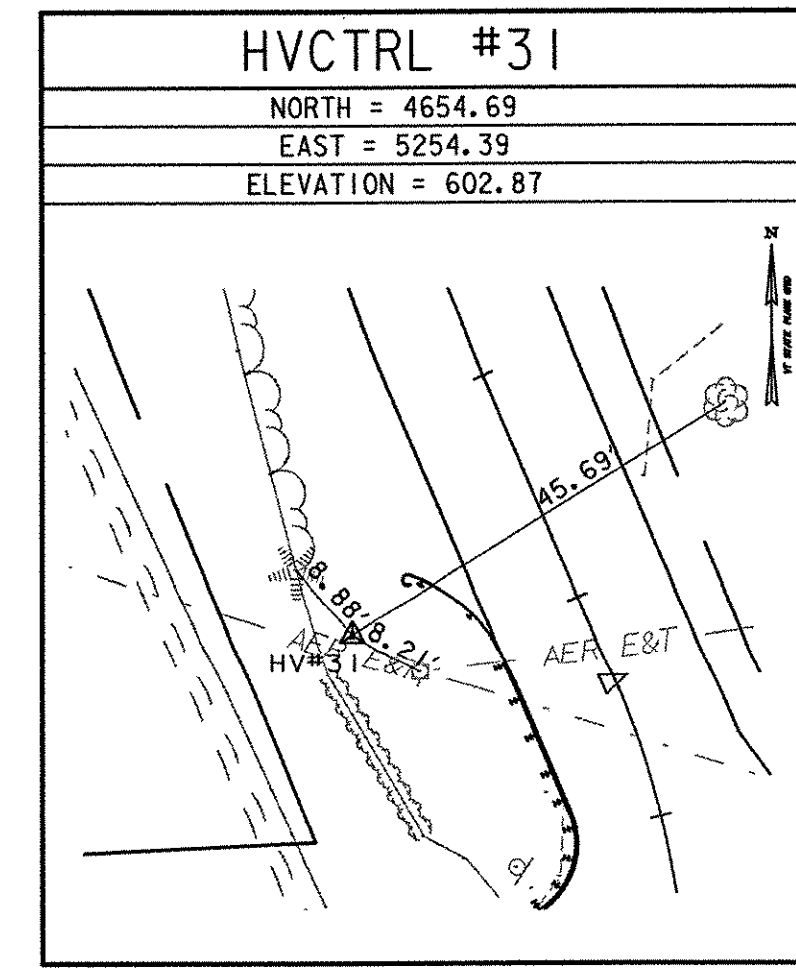
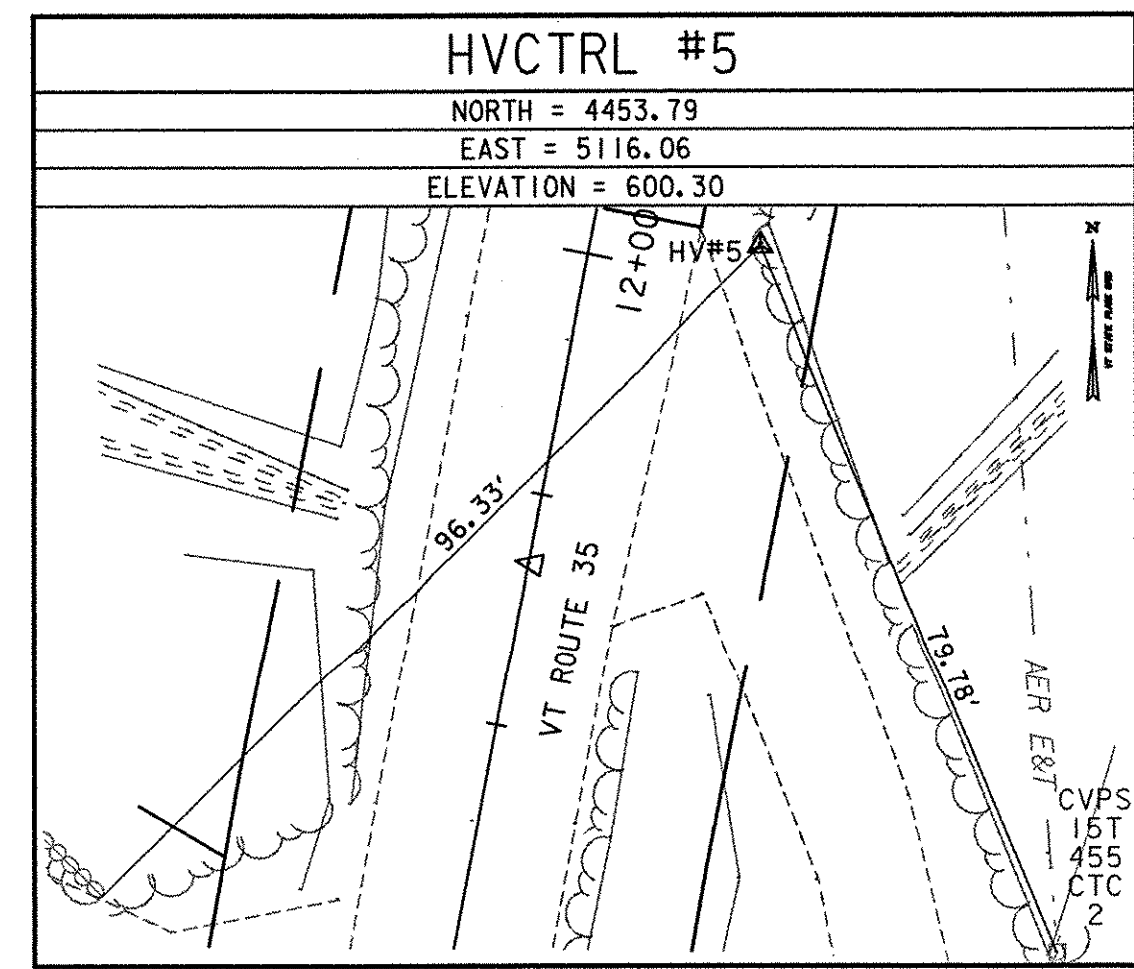
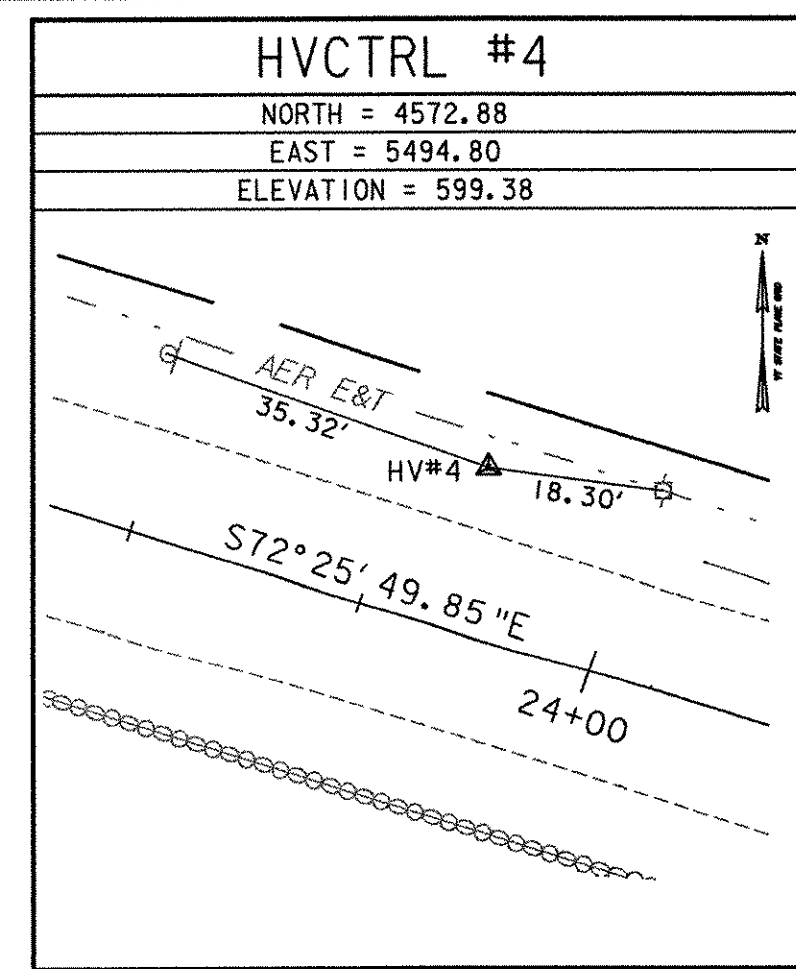
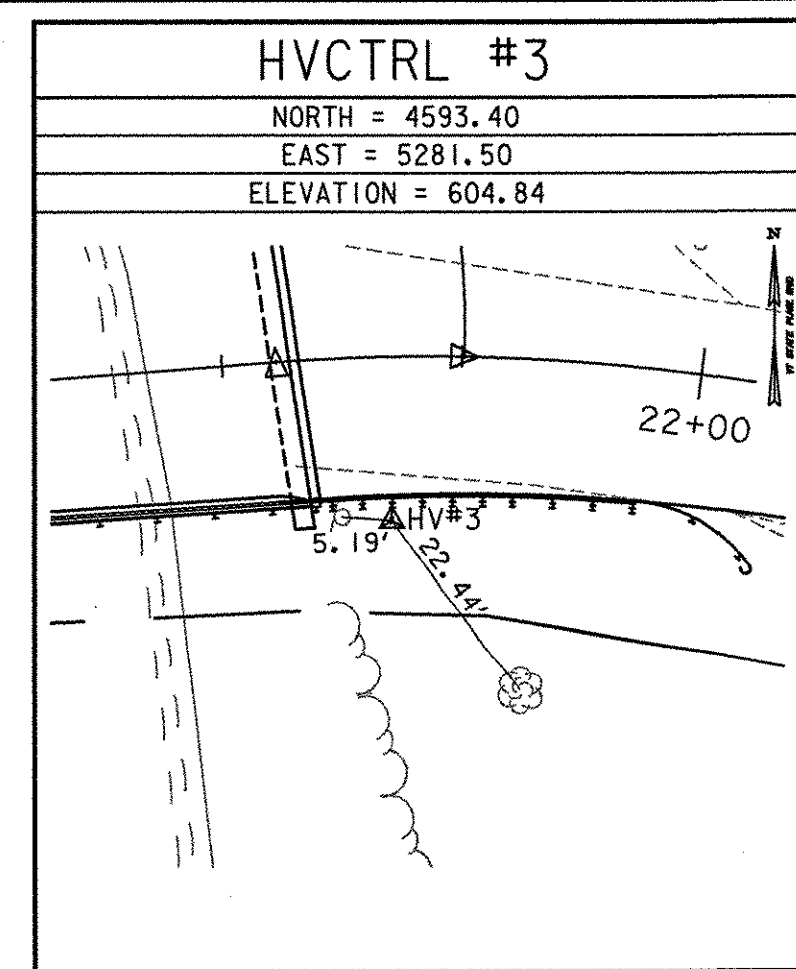
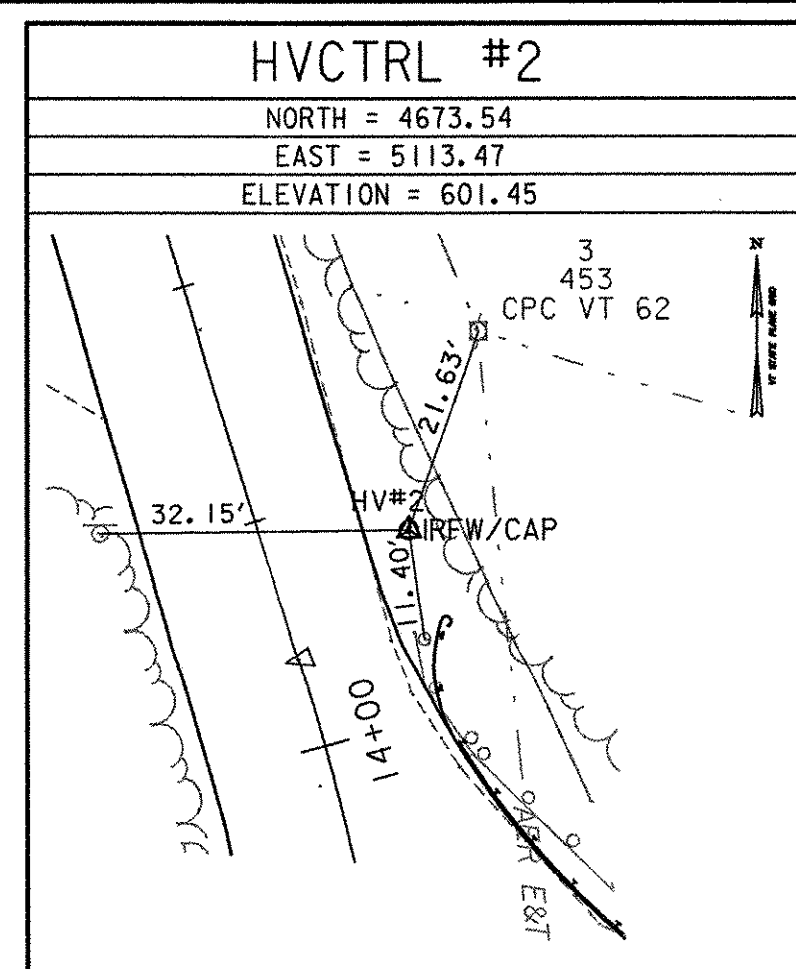
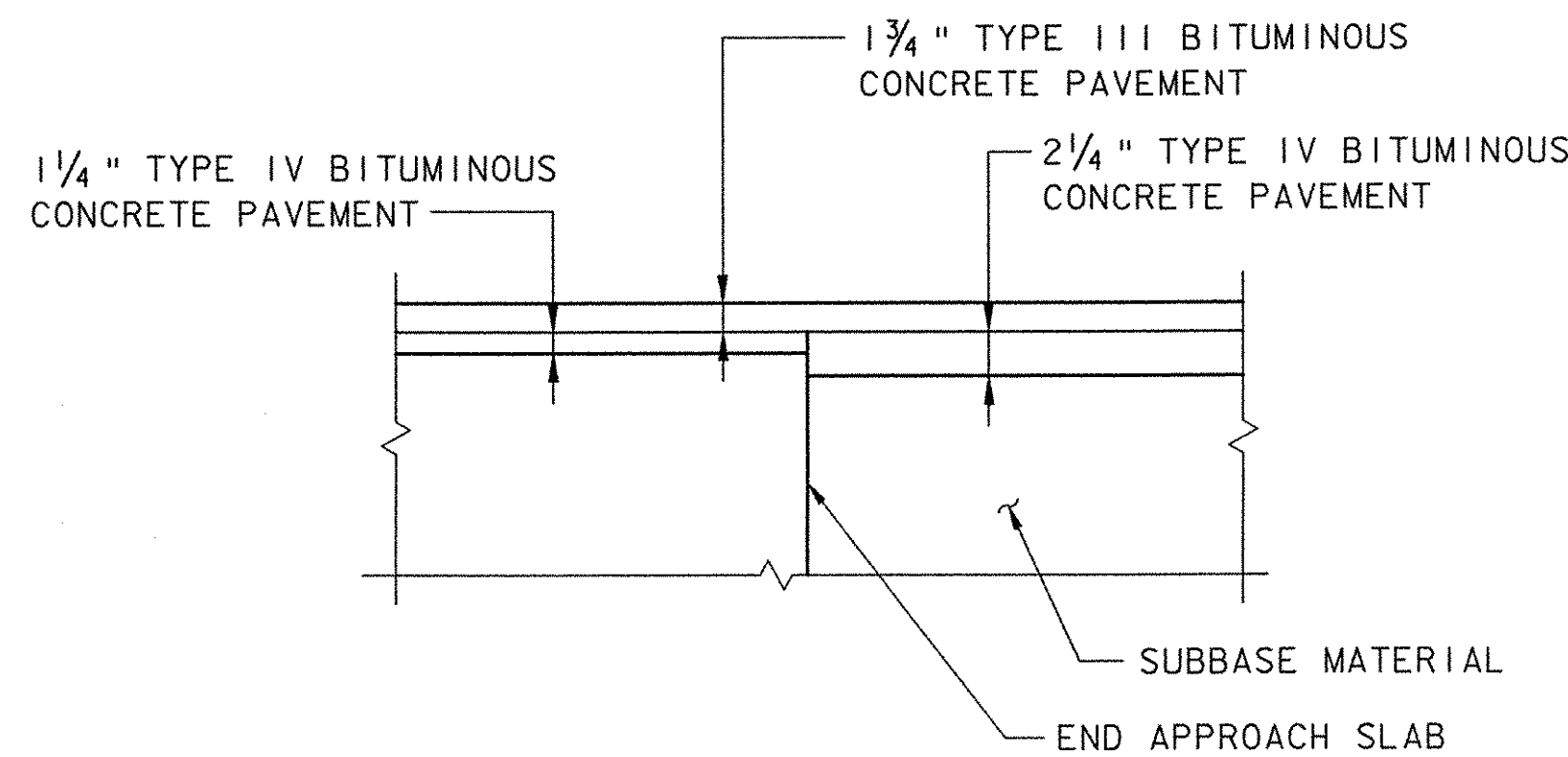
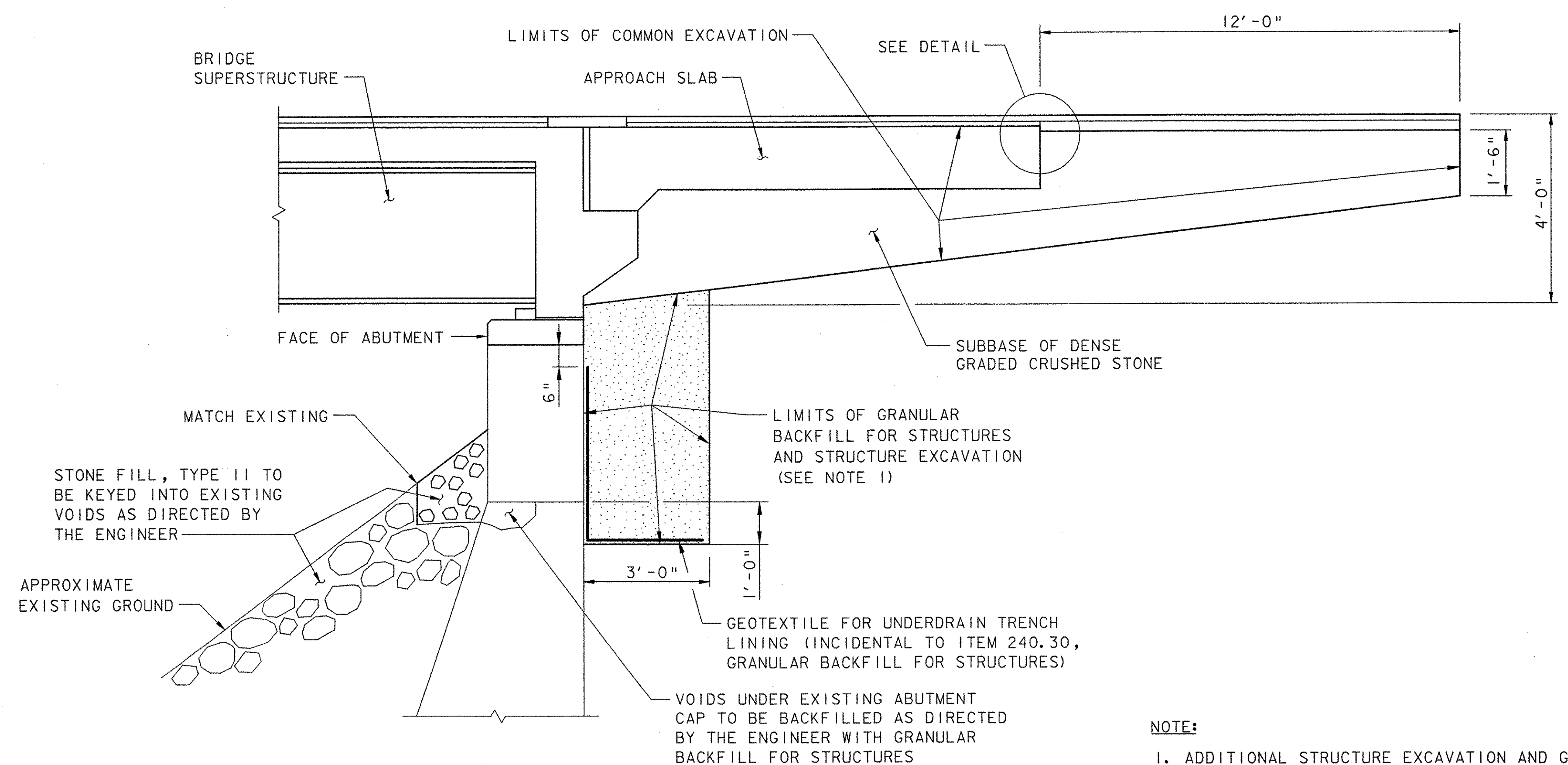
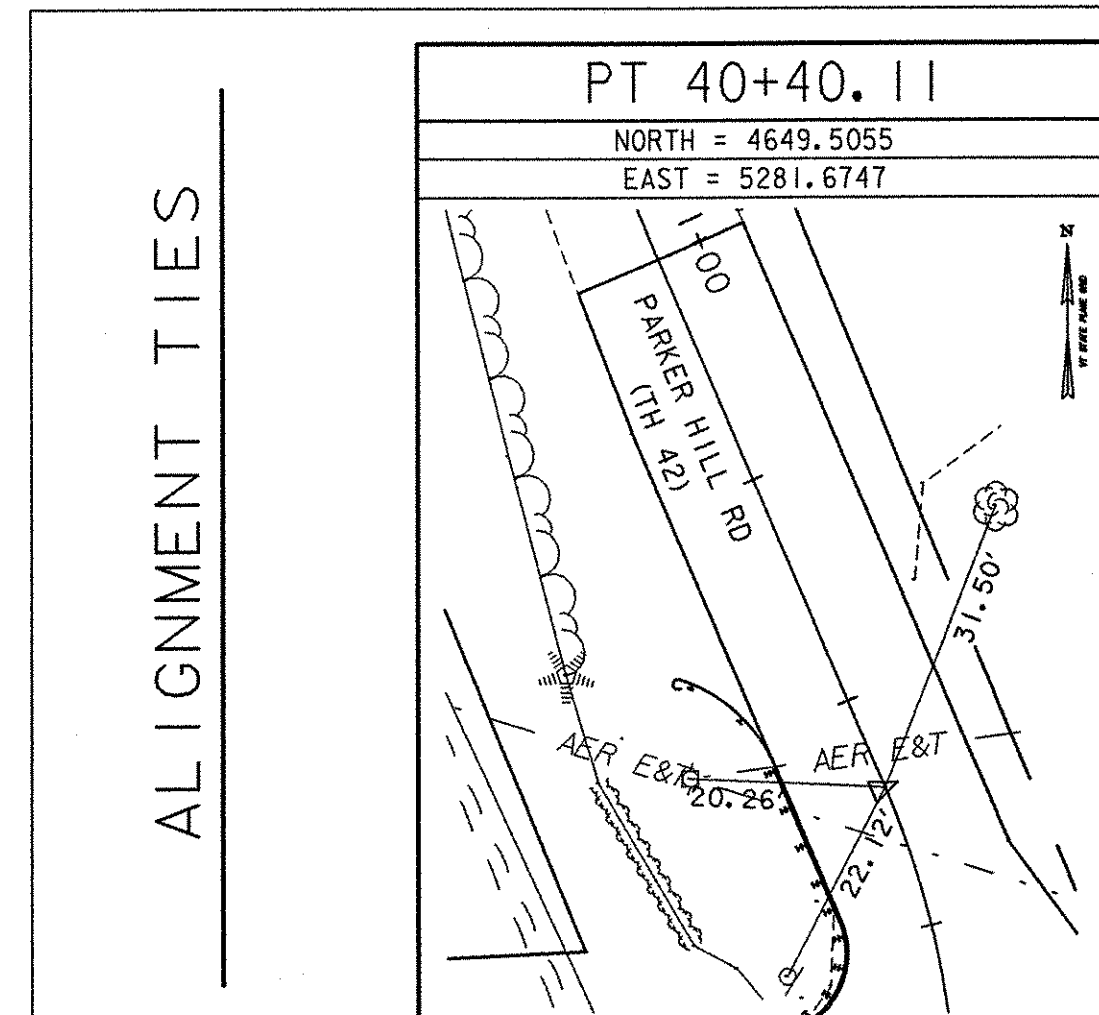
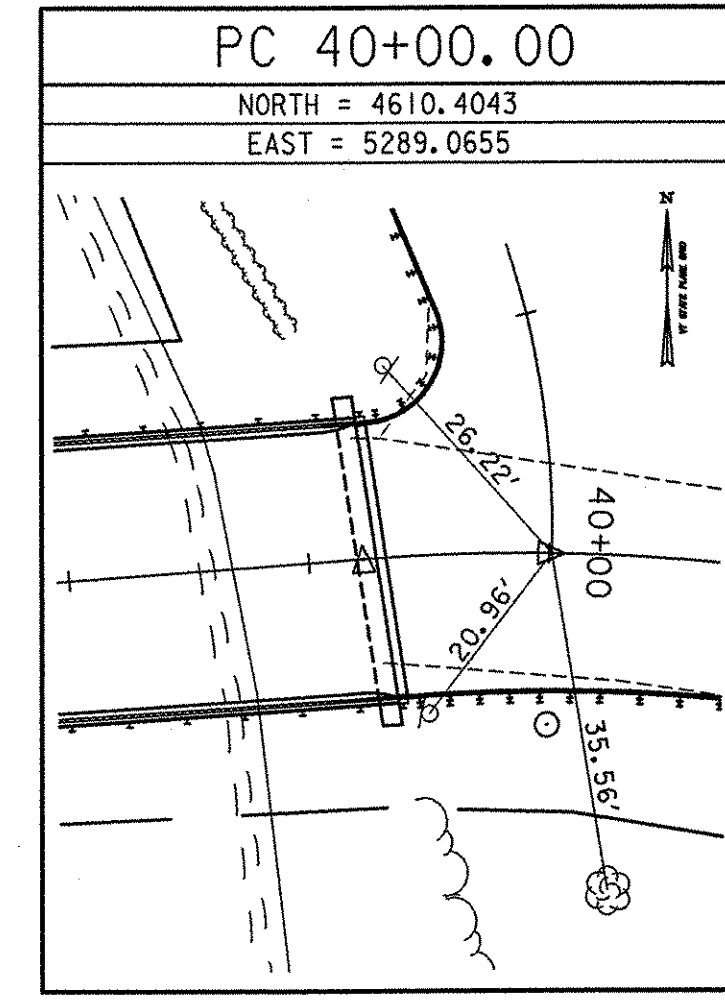
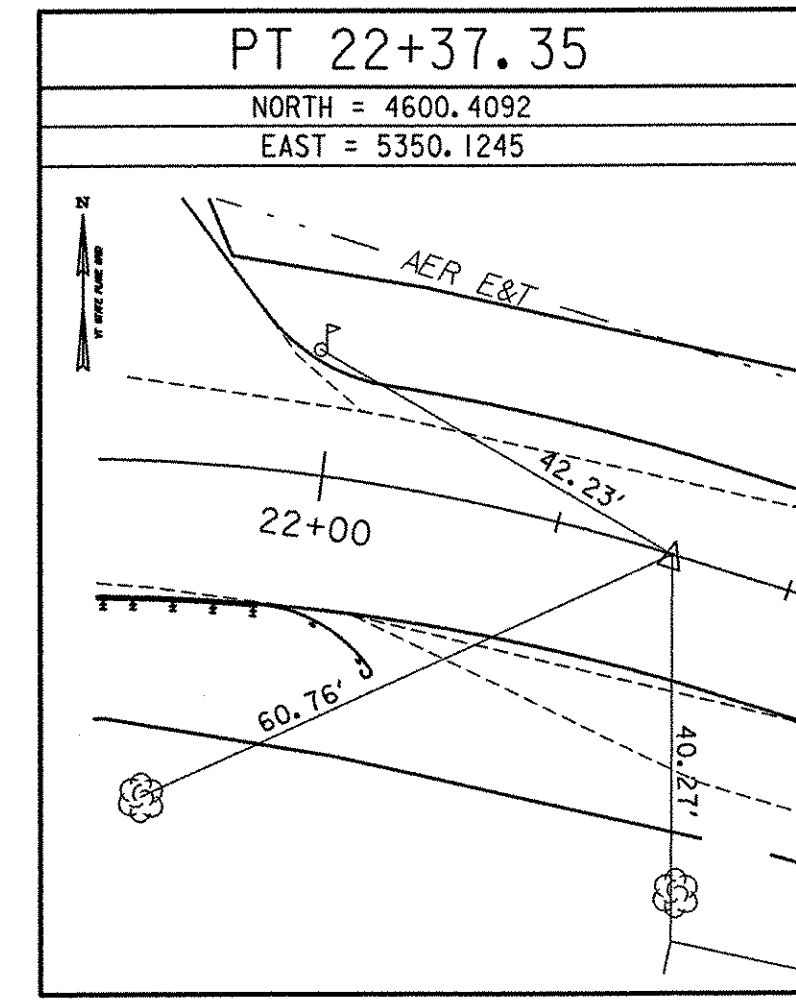
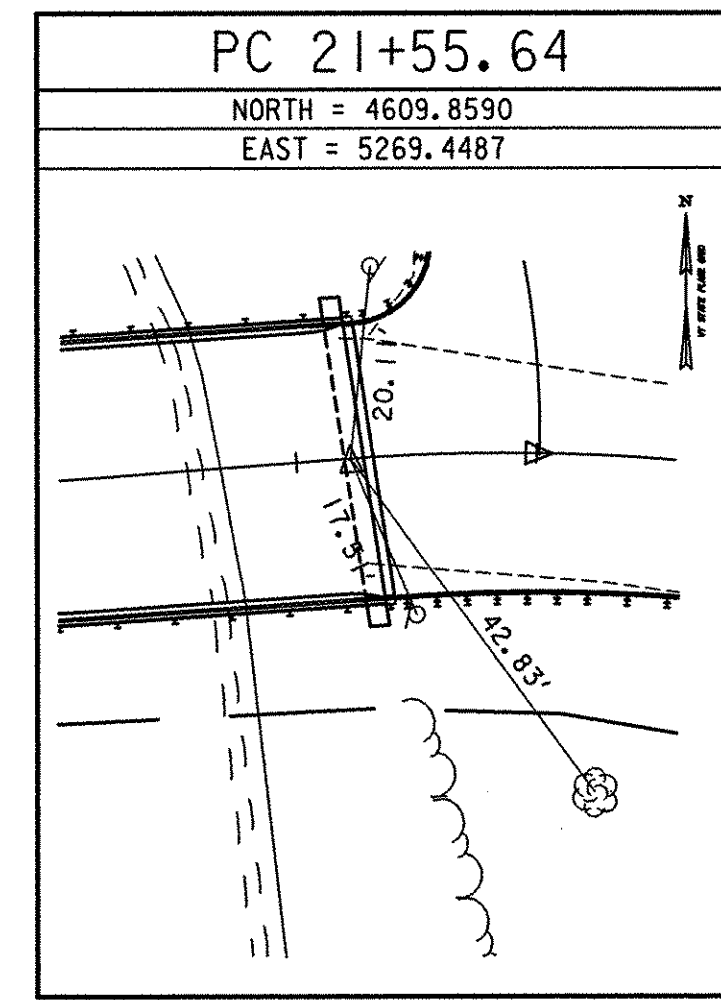
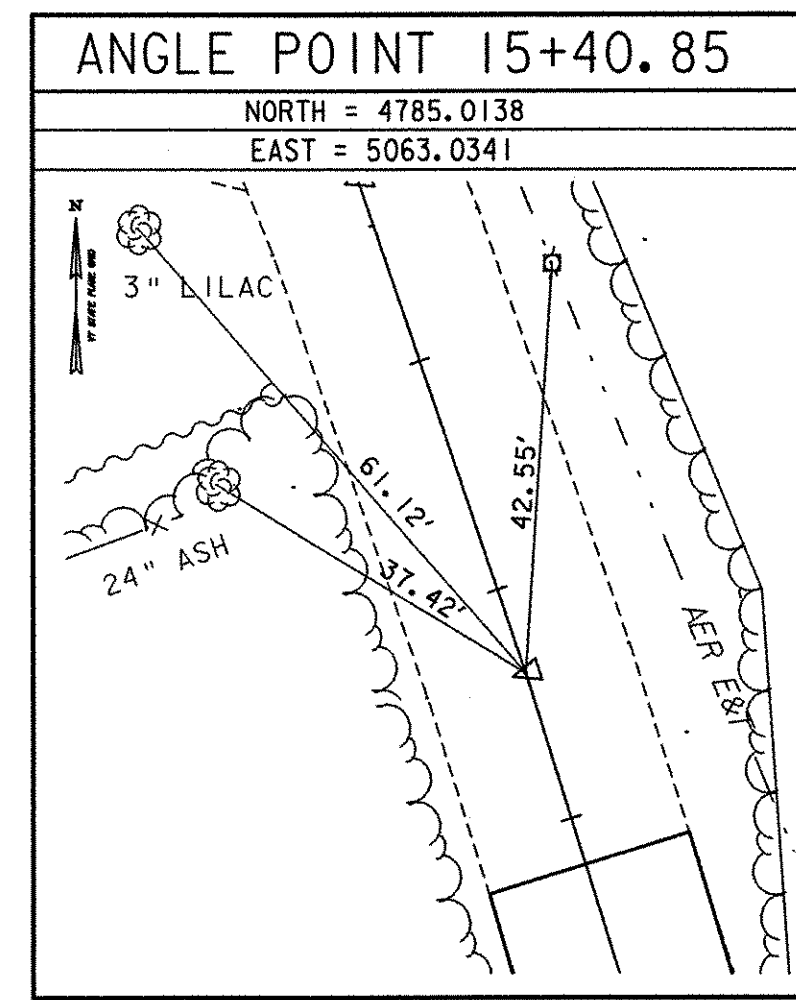
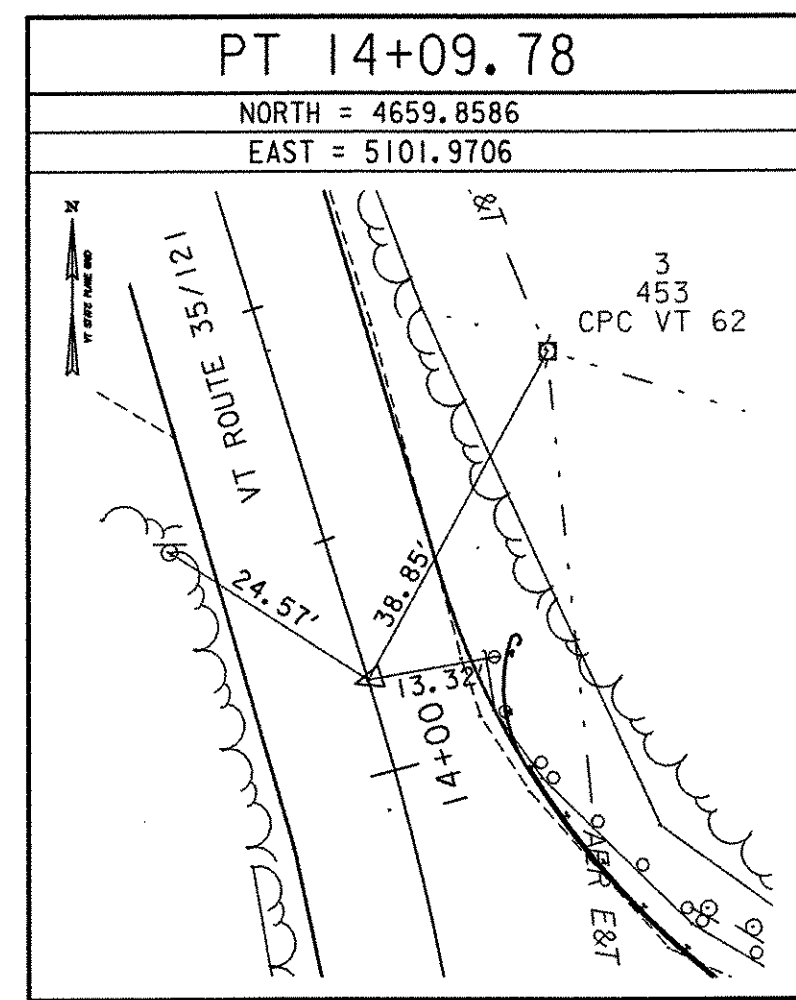
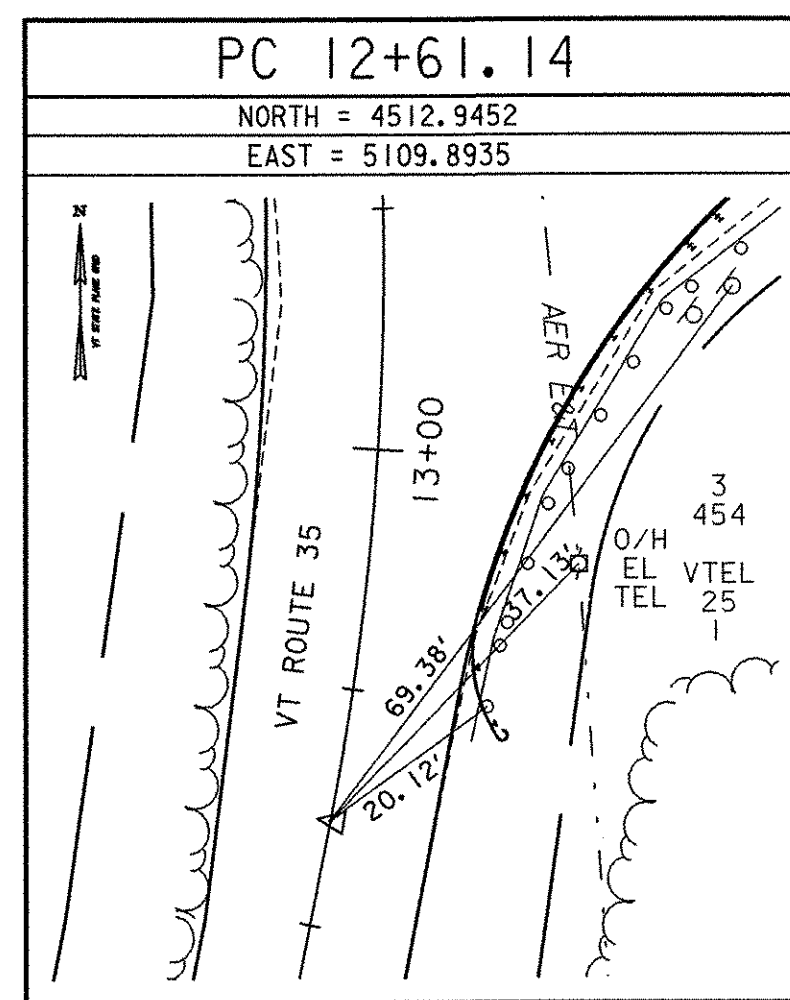
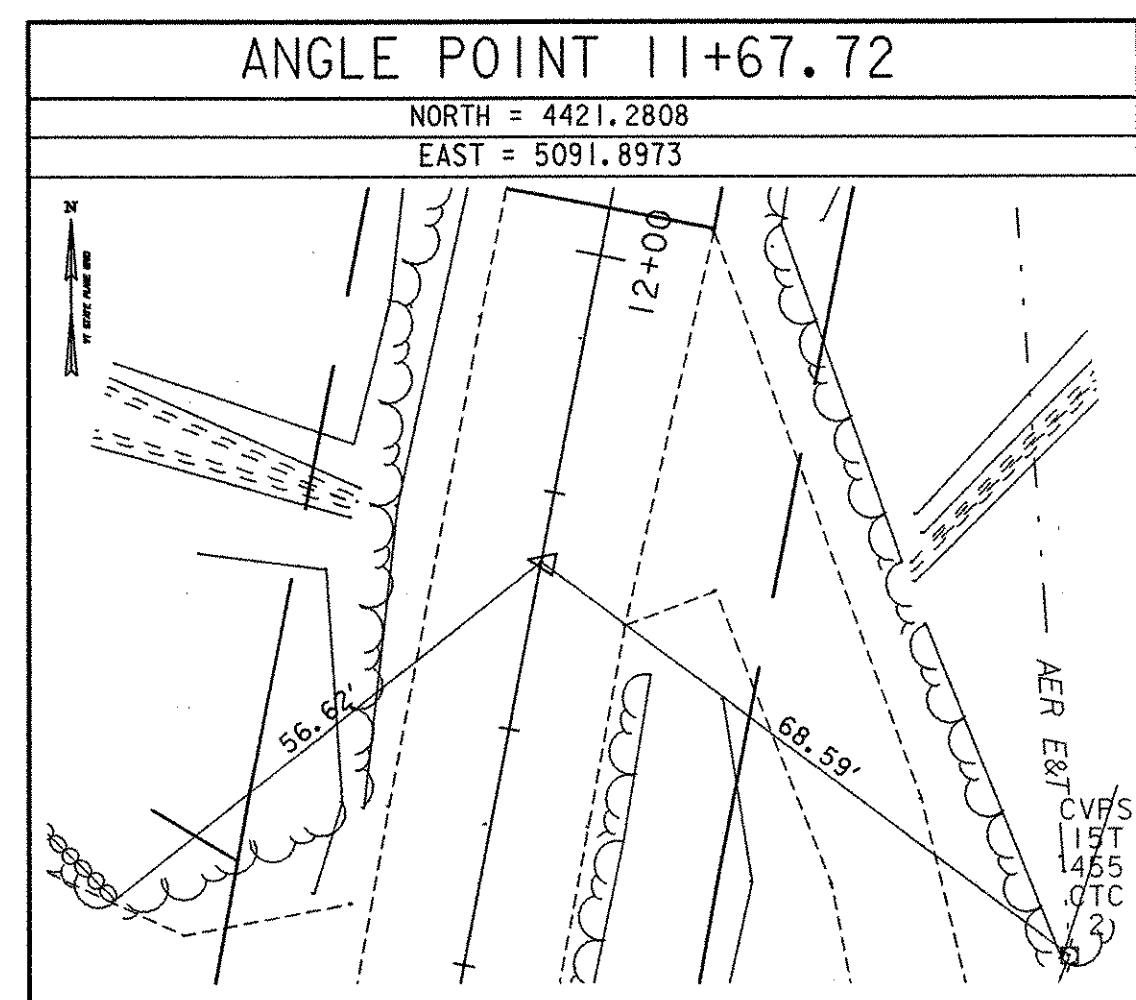


TRAVERSE TIES



ALIGNMENT TIES



NOTE:
 1. ADDITIONAL STRUCTURE EXCAVATION AND GRANULAR BACKFILL FOR STRUCTURES MAY BE REQUIRED TO ACCESS REPAIR AREAS AT THE BACK OF THE ABUTMENT AND SHALL BE PAID UNDER ITEMS 204.25 AND 204.30.

DATUM
 VERTICAL NAVD 88
 HORIZONTAL ASSUMED

EARTHWORK TYPICAL
 NOT TO SCALE

**BITUMINOUS CONCRETE PAVEMENT
 DETAIL AT APPROACH SLAB ENDS**
 NOT TO SCALE

NO.	DESCRIPTION	BY	DATE
1	ADDITIONAL ALIGNMENT TIES AND SURVEY COORDINATES	BJM	6/05

**TOWN OF GRAFTON
 CAMBRIDGEPORT BRIDGE**

Town Of	GRAFTON	Bridge No.	16G
Highway No.	TH 1	Log Sta.	
TH 1 (CAMBRIDGEPORT BRIDGE) OVER THE SAXTONS RIVER		Surv. Sta.	
TIE SHEET & TYPICAL DETAILS			
Designed By	J. A. MERCER	Drawn By	B. J. MASSE
Checked By	Date	Bridge Design Supervisor	
M. A. COLGAN	6/05	M. A. COLGAN	Date 6/05
PROJECT	GRAFTON	PROJECT NO.	TH2-0104
I.G.C. Info.	File No. 51335T1E	Sheet	6 of 42

VHB NO. 51335
 plot date: 6/23/2005

VHB Vanasse Hangen Brustlin, Inc.