

**NOTES**

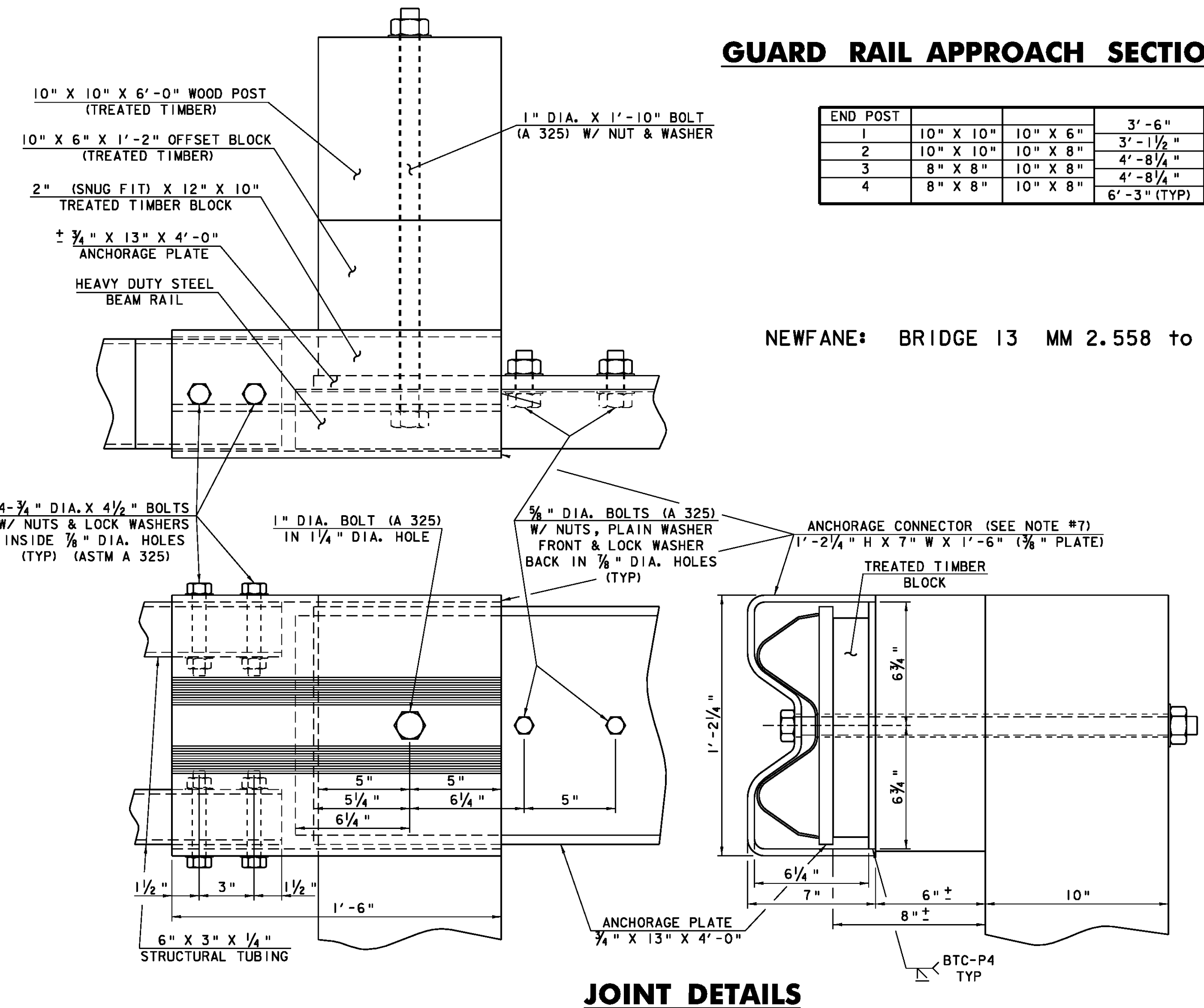
- REFER TO STANDARD G-1 FOR DETAILS OF APPROACH GUARD RAIL.
- APPROACH RAIL SPLICES SHALL LAP IN DIRECTION OF TRAFFIC FLOW.
- ANCHORAGE CONNECTOR AND ANCHORAGE PLATE SHALL BE ASTM A 36 STEEL GALVANIZED TO ASTM A 123 AFTER FABRICATION.
- REFER TO STANDARD SB-R4A-82 FOR NOTES AND DETAILS OF BRIDGE RAILING.
- GUARD RAIL APPROACH SECTION-TYPE I & II SHALL INCLUDE ANCHORAGE PLATE, ANCHORAGE CONNECTOR, RAIL, POSTS, BLOCKS, AND ATTACHMENT HARDWARE.
- APPROACH RAILING SHALL BE HEAVY DUTY STEEL BEAM FOR 50'-0" FROM THE  $\phi$  OF POST I FOR TYPE I AND 12'-6" FROM THE  $\phi$  OF POST I FOR TYPE II.
- ALLOWABLE DIMENSIONAL TOLERANCE FOR BENT SECTIONS IS  $\pm 1/16$ " OF AN INCH.

**GUARD RAIL APPROACH SECTION TYPE 1**

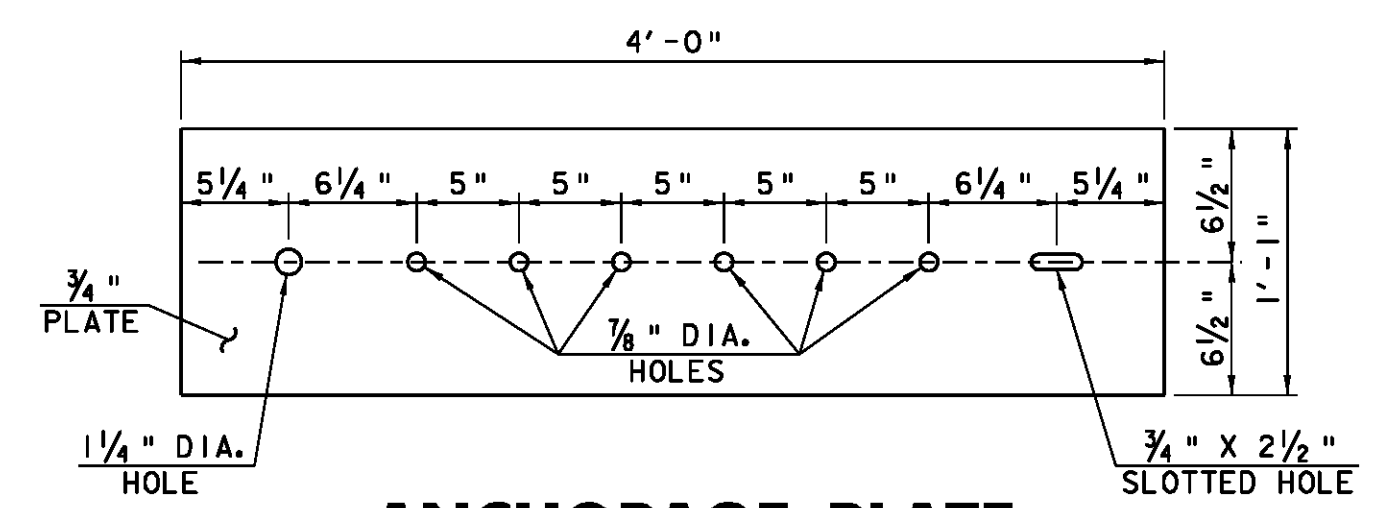
POST NO.	POST SIZE	OFFSET BLOCK	SPACING	GUARD RAIL APPROACH SECTION TYPE I, 50'-0"
END POST				
1	10" X 10"	10" X 6"	3'-6"	
2	10" X 10"	10" X 8"	3'-1 1/2"	
3	10" X 10"	10" X 8"	3'-1 1/2"	
4	10" X 10"	10" X 8"	3'-1 1/2"	
5	8" X 8"	8" X 8"	3'-1 1/2"	
6	8" X 8"	8" X 8"	3'-1 1/2"	
7	8" X 8"	8" X 8"	3'-1 1/2"	
8	8" X 8"	8" X 8"	3'-1 1/2"	
9	6" X 8"	6" X 8"	4'-2"	
10	6" X 8"	6" X 8"	4'-2"	
11	6" X 8"	6" X 8"	4'-2"	
12	6" X 8"	6" X 8"	6'-3"	
13	6" X 8"	6" X 8"	6'-3"	
14	6" X 8" (TYP)	6" X 8" (TYP)	6'-3" (TYP)	

**GUARD RAIL APPROACH SECTION TYPE 2**

END POST	POST SIZE	OFFSET BLOCK	SPACING	APPROACH SECTION TYPE II, 12'-6"
1	10" X 10"	10" X 6"	3'-6"	
2	10" X 10"	10" X 8"	3'-1 1/2"	
3	8" X 8"	10" X 8"	4'-8 1/4"	
4	8" X 8"	10" X 8"	6'-3" (TYP)	



NEWFANE: BRIDGE 13 MM 2.558 to MM 2.571



NOT TO SCALE

**PROJECT TYPICAL SHEET 5**

PROJECT NAME: NEWFANE-TOWNSHEND	PLOT DATE: 04-FEB-2010
PROJECT NUMBER: STP 240I (I)	DRAWN BY: JBZ
FILE NAME: p01b036.dgn	CHECKED BY: BDB
IPARM FILE NAME: p01b036_07.1	SHEET 7 OF 32