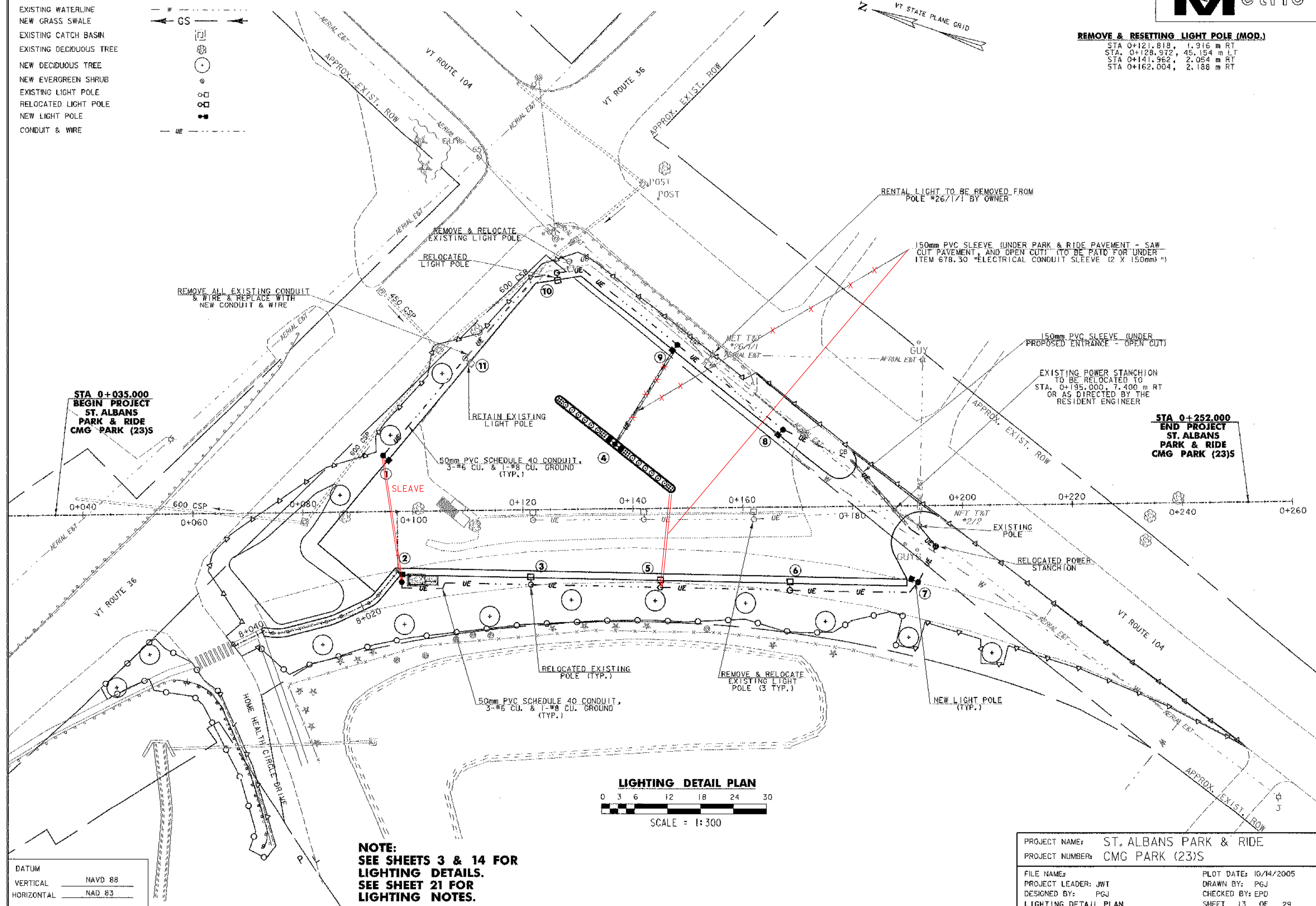


**REMOVE & RESET LIGHT POLE (MOD.)**

STA 0+121.818, 1.916 m RT  
 STA 0+128.972, 45.154 m LT  
 STA 0+141.962, 2.054 m RT  
 STA 0+162.004, 2.188 m RT

**LEGEND**

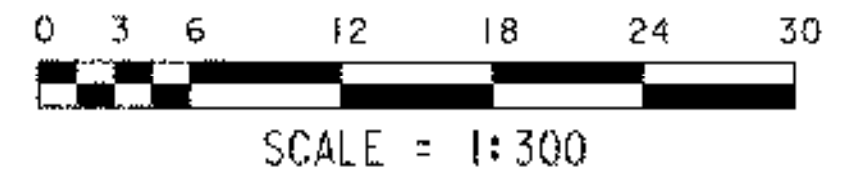
- EXISTING WATERLINE
- NEW GRASS SWALE
- EXISTING CATCH BASIN
- EXISTING DECIDUOUS TREE
- NEW DECIDUOUS TREE
- NEW EVERGREEN SHRUB
- EXISTING LIGHT POLE
- RELOCATED LIGHT POLE
- NEW LIGHT POLE
- CONDUIT & WIRE



**STA 0+035.000  
 BEGIN PROJECT  
 ST. ALBANS  
 PARK & RIDE  
 CMG PARK (23)S**

**STA 0+252.000  
 END PROJECT  
 ST. ALBANS  
 PARK & RIDE  
 CMG PARK (23)S**

**LIGHTING DETAIL PLAN**



**NOTE:  
 SEE SHEETS 3 & 14 FOR  
 LIGHTING DETAILS.  
 SEE SHEET 21 FOR  
 LIGHTING NOTES.**

PROJECT NAME: ST. ALBANS PARK & RIDE	
PROJECT NUMBER: CMG PARK (23)S	
FILE NAME:	PLOT DATE: 10/14/2005
PROJECT LEADER: JWT	DRAWN BY: PGJ
DESIGNED BY: PGJ	CHECKED BY: EPD
LIGHTING DETAIL PLAN	SHEET 13 OF 29

DATUM	
VERTICAL	NAVD 88
HORIZONTAL	NAD 83