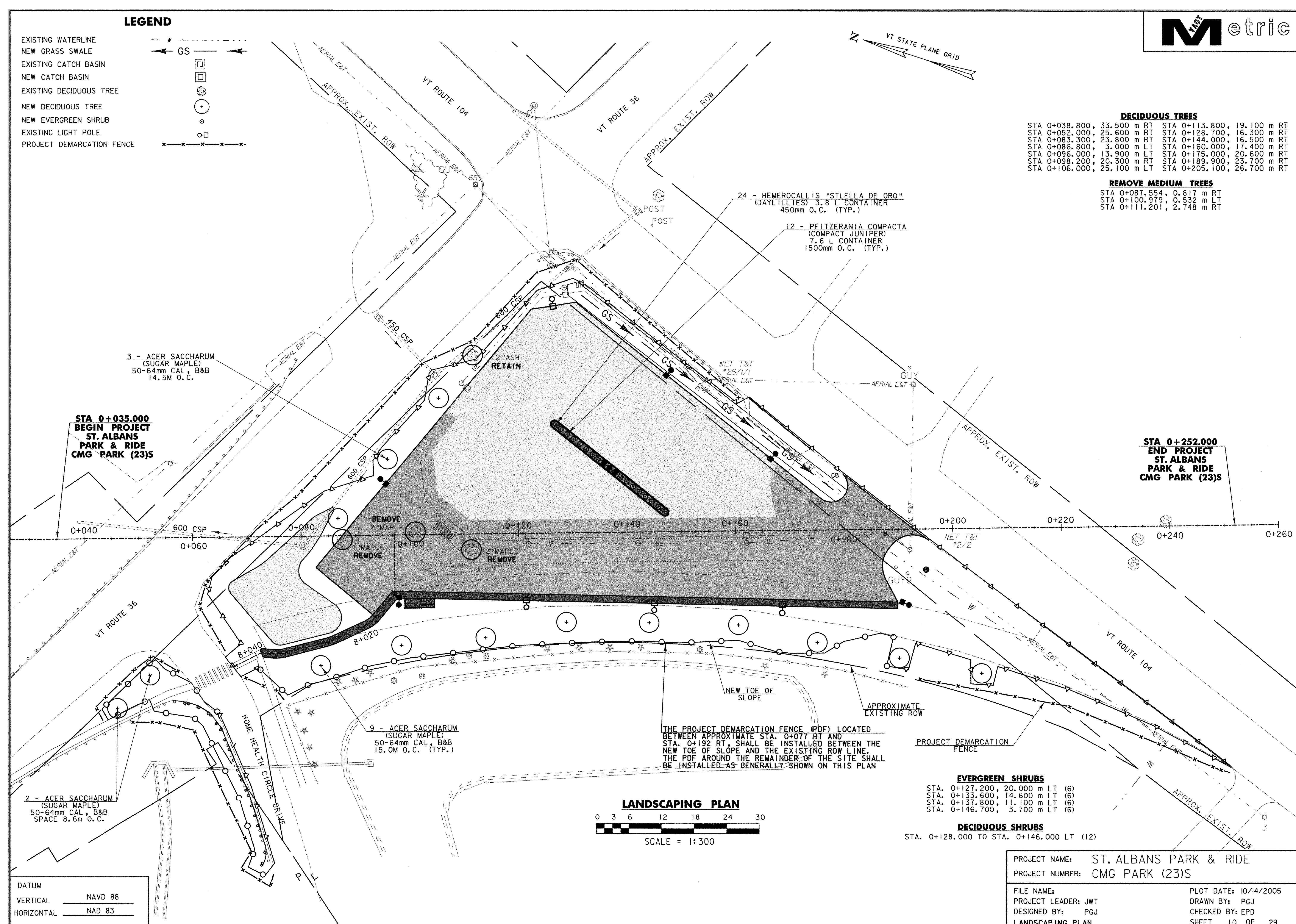
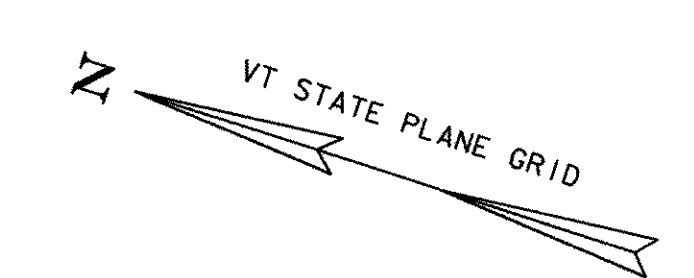


LEGEND

- EXISTING WATERLINE
- NEW GRASS SWALE
- EXISTING CATCH BASIN
- NEW CATCH BASIN
- EXISTING DECIDUOUS TREE
- NEW DECIDUOUS TREE
- NEW EVERGREEN SHRUB
- EXISTING LIGHT POLE
- PROJECT DEMARCATION FENCE



DECIDUOUS TREES

STA 0+038.800, 33.500 m RT	STA 0+113.800, 19.100 m RT
STA 0+052.000, 25.600 m RT	STA 0+128.700, 16.300 m RT
STA 0+083.300, 23.800 m RT	STA 0+144.000, 16.500 m RT
STA 0+086.800, 3.000 m LT	STA 0+160.000, 17.400 m RT
STA 0+096.000, 13.900 m LT	STA 0+175.000, 20.600 m RT
STA 0+098.200, 20.300 m RT	STA 0+189.900, 23.700 m RT
STA 0+106.000, 25.100 m LT	STA 0+205.100, 26.700 m RT

REMOVE MEDIUM TREES

STA 0+087.554, 0.817 m RT
STA 0+100.979, 0.532 m LT
STA 0+111.201, 2.748 m RT

STA 0+035.000
BEGIN PROJECT
ST. ALBANS
PARK & RIDE
CMG PARK (23)S

STA 0+252.000
END PROJECT
ST. ALBANS
PARK & RIDE
CMG PARK (23)S

2 - ACER SACCHARUM
 (SUGAR MAPLE)
 50-64mm CAL., B&B
 SPACE 8.6m O.C.

3 - ACER SACCHARUM
 (SUGAR MAPLE)
 50-64mm CAL., B&B
 14.5M O.C.

9 - ACER SACCHARUM
 (SUGAR MAPLE)
 50-64mm CAL., B&B
 15.0M O.C. (TYP.)

24 - HEMEROCALLIS "STELLA DE ORO"
 (DAYLILIES) 3.8 L CONTAINER
 450mm O.C. (TYP.)

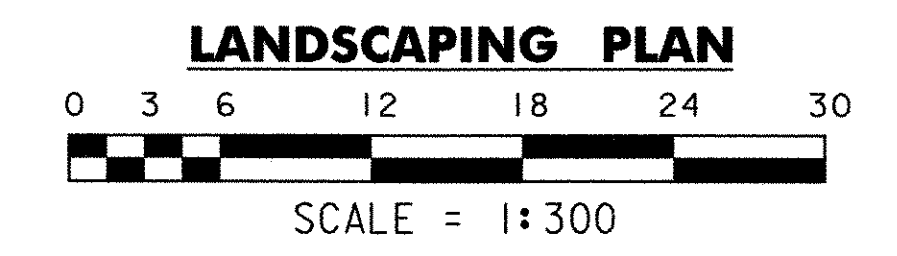
12 - PFITZERANIA COMPACTA
 (COMPACT JUNIPER)
 7.6 L CONTAINER
 1500mm O.C. (TYP.)

THE PROJECT DEMARCATION FENCE (PDF) LOCATED
 BETWEEN APPROXIMATE STA. 0+077 RT AND
 STA. 0+192 RT, SHALL BE INSTALLED BETWEEN THE
 NEW TOE OF SLOPE AND THE EXISTING ROW LINE.
 THE PDF AROUND THE REMAINDER OF THE SITE SHALL
 BE INSTALLED AS GENERALLY SHOWN ON THIS PLAN

EVERGREEN SHRUBS

STA. 0+127.200, 20.000 m LT (6)
STA. 0+133.600, 14.600 m LT (6)
STA. 0+137.800, 11.100 m LT (6)
STA. 0+146.700, 3.700 m LT (6)

DECIDUOUS SHRUBS
 STA. 0+128.000 TO STA. 0+146.000 LT (12)



DATUM

VERTICAL	NAVD 88
HORIZONTAL	NAD 83

PROJECT NAME: ST. ALBANS PARK & RIDE	
PROJECT NUMBER: CMG PARK (23)S	
FILE NAME:	PLOT DATE: 10/14/2005
PROJECT LEADER: JWT	DRAWN BY: PGJ
DESIGNED BY: PGJ	CHECKED BY: EPD
LANDSCAPING PLAN	SHEET 10 OF 29